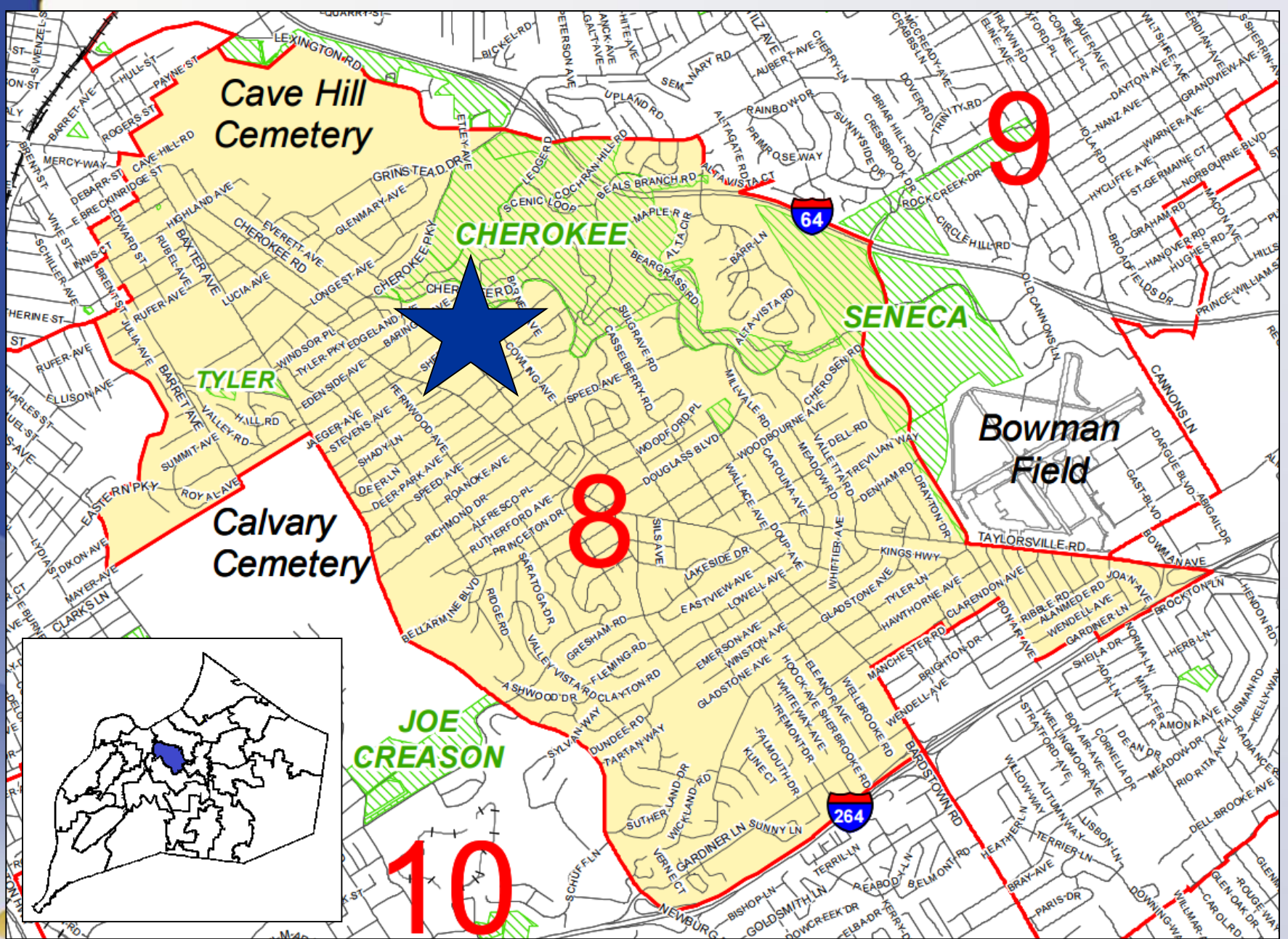


**18STREETS1029
2070 EASTERN PARKWAY
ALLEY CLOSURE**



**Planning & Zoning Committee
June 18, 2019**



Cave Hill Cemetery

Calvary Cemetery

CHEROKEE

SENECA

TYLER

JOE CREASON

Bowman Field

8

9

10

Louisville

**2070 Eastern Parkway
District 8 - Brandon Coan**

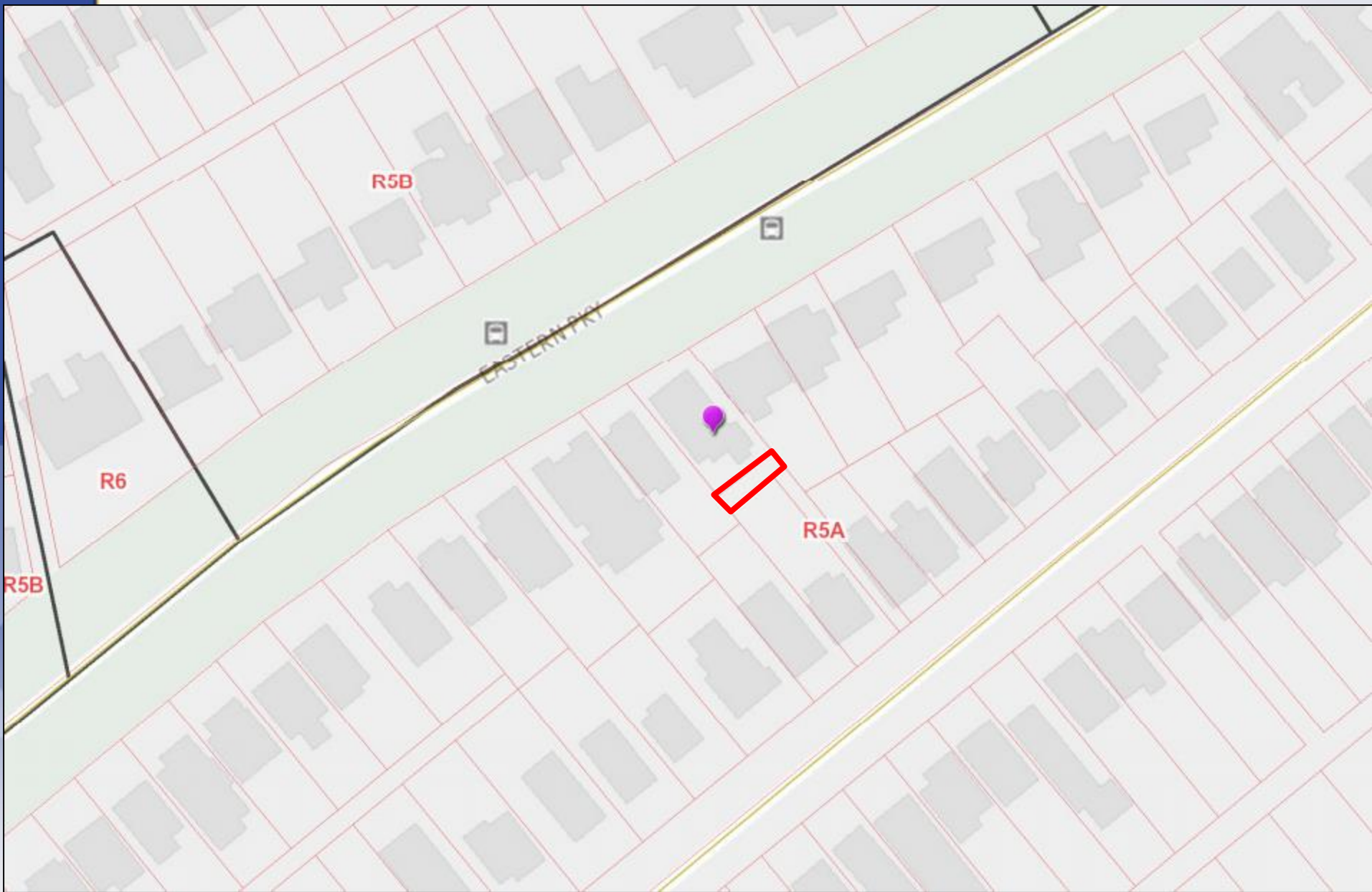
18STREETS1029


Request(s)

- Close an unimproved 15' alley located behind 2070 Eastern Parkway

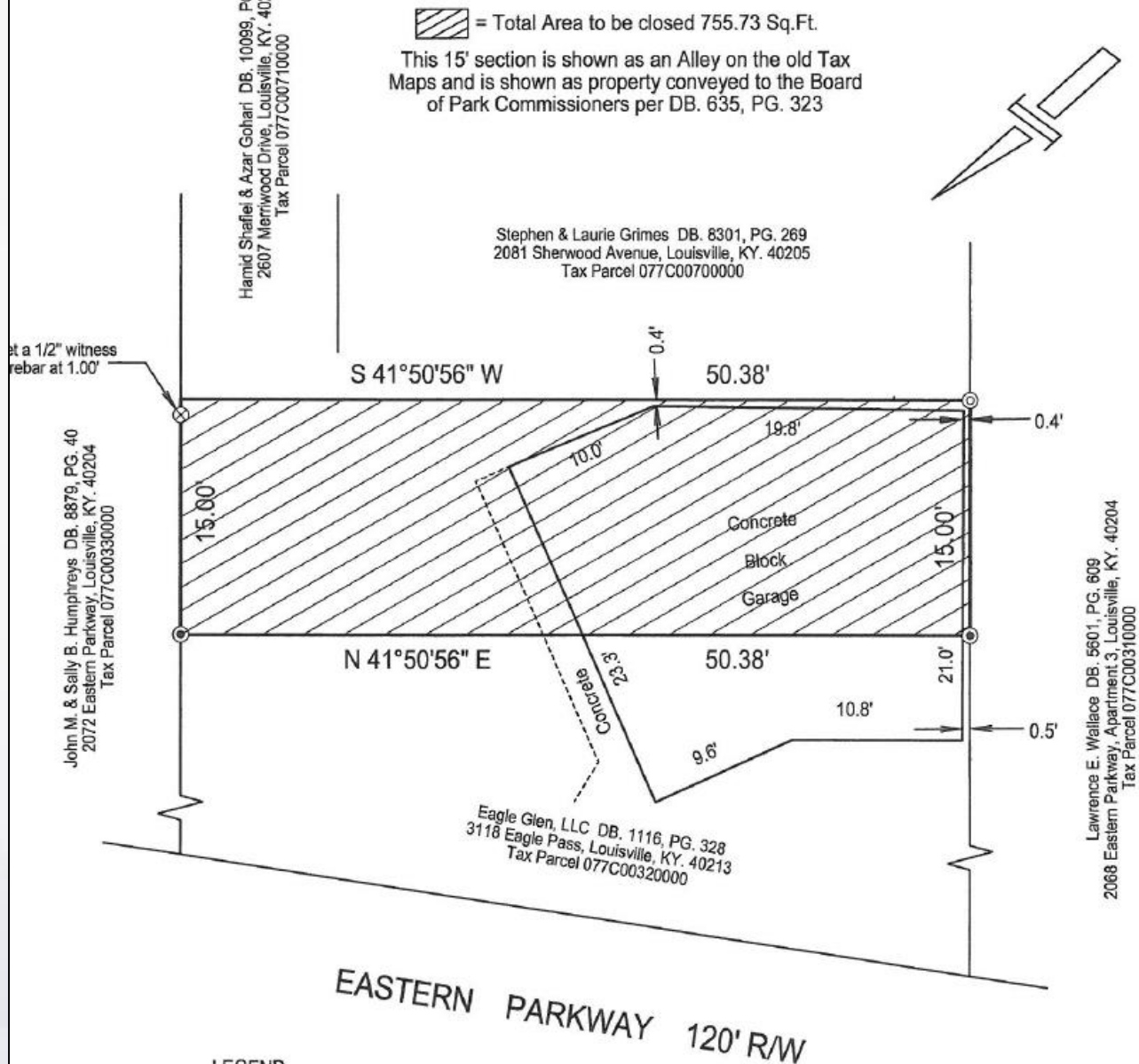
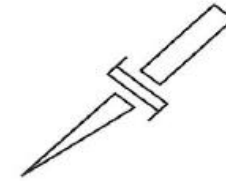
Case Summary

- The 15' unimproved alley is located between 2070 Eastern Parkway and 2081 Sherwood Avenue.
- The ROW does not connect to any other ROW.
- There is an existing garage over a large portion of the ROW.



 = Total Area to be closed 755.73 Sq.Ft.

This 15' section is shown as an Alley on the old Tax Maps and is shown as property conveyed to the Board of Park Commissioners per DB. 635, PG. 323



LEGEND

- ⊙ = Existing 5/8" rebar with a cap #2542.
- ⊗ = Set a witness rebar with a cap #3444.
- ⊙ = Set a 1/2" rebar with a cap #3444 Willett.

Public Meetings

- LD&T meeting on 4/25/2019
- Planning Commission public hearing on 5/9/2019
 - No one spoke in opposition.
 - The Commission recommended approval of the alley closure with a vote of 5-0-1 (four members were not present).