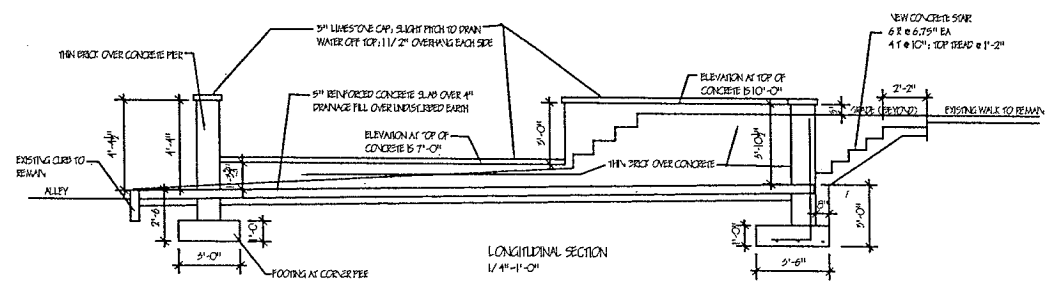
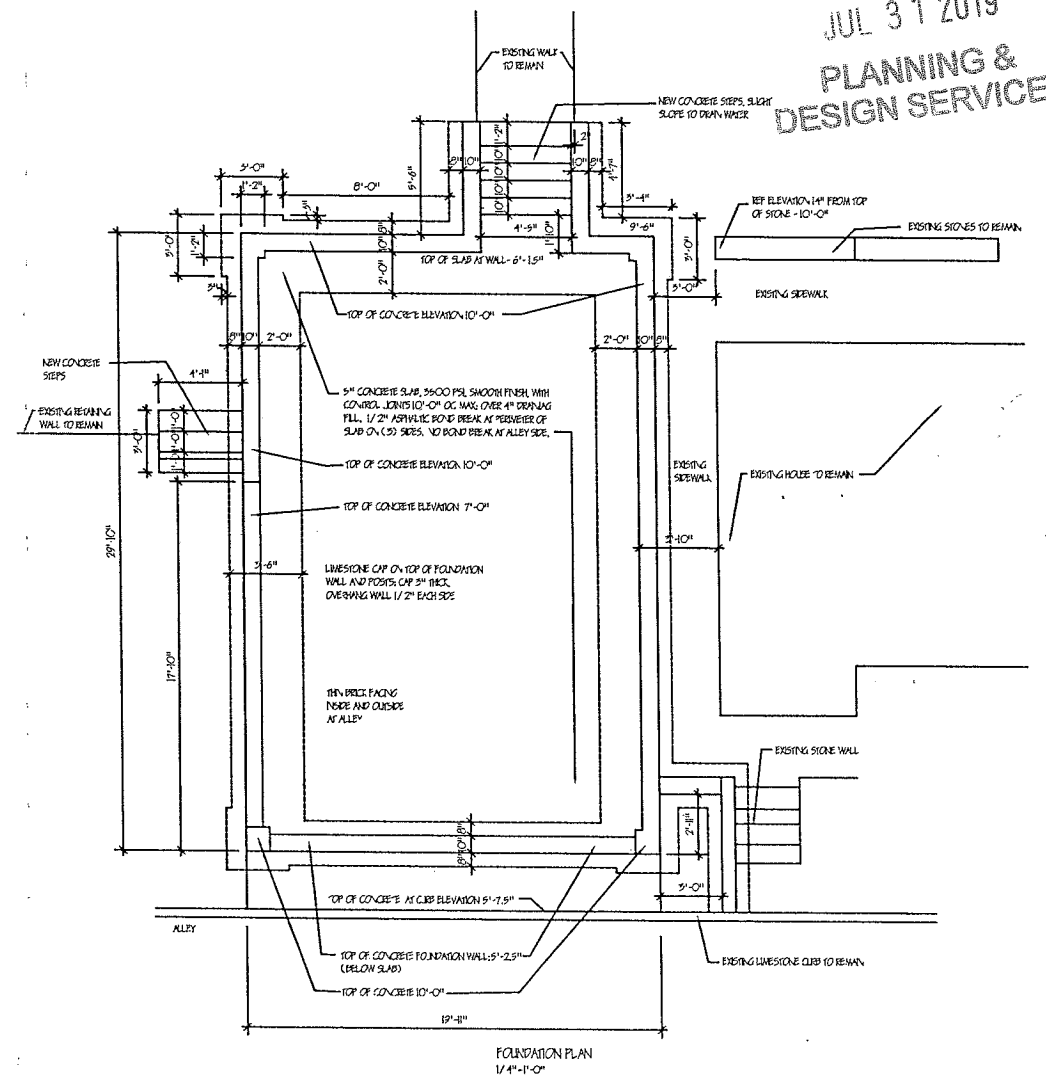


SECTION  
1/4" = 1'-0"



LONGITUDINAL SECTION  
1/4" = 1'-0"



FOUNDATION PLAN  
1/4" = 1'-0"

RECEIVED  
JUL 31 2019  
PLANNING &  
DESIGN SERVICES

Revisions:

1	
2	
3	
4	
5	
6	
7	
8	
9	

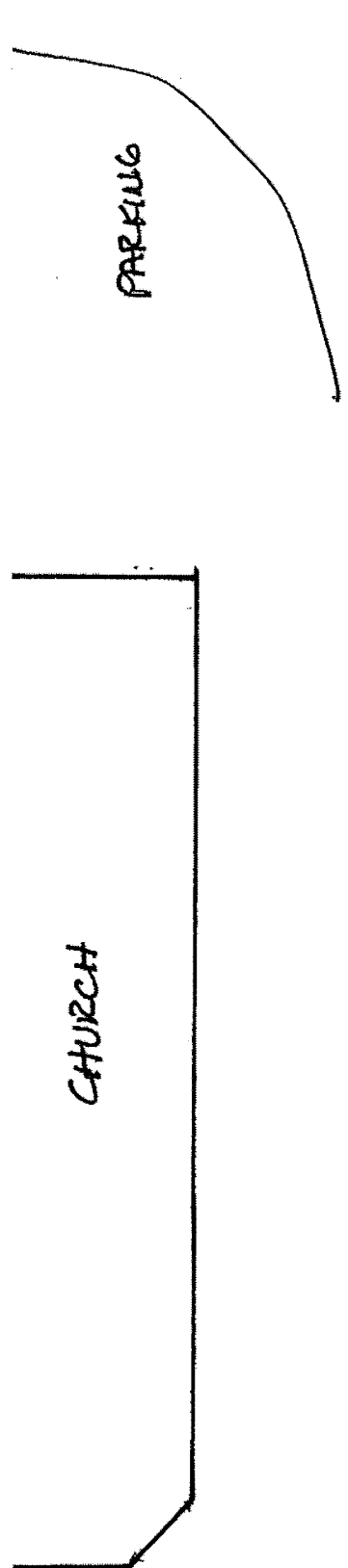
Anne Del Prince, Architect  
640 Country Club Road  
(502) 893-6026

Holladay Parking Slab  
1407 St James Court  
Louisville, KY 40208

Title: Plan Sections  
Scale: 1/4" = 1'-0"  
Date: 5/7/12

Sheet No.: A-1

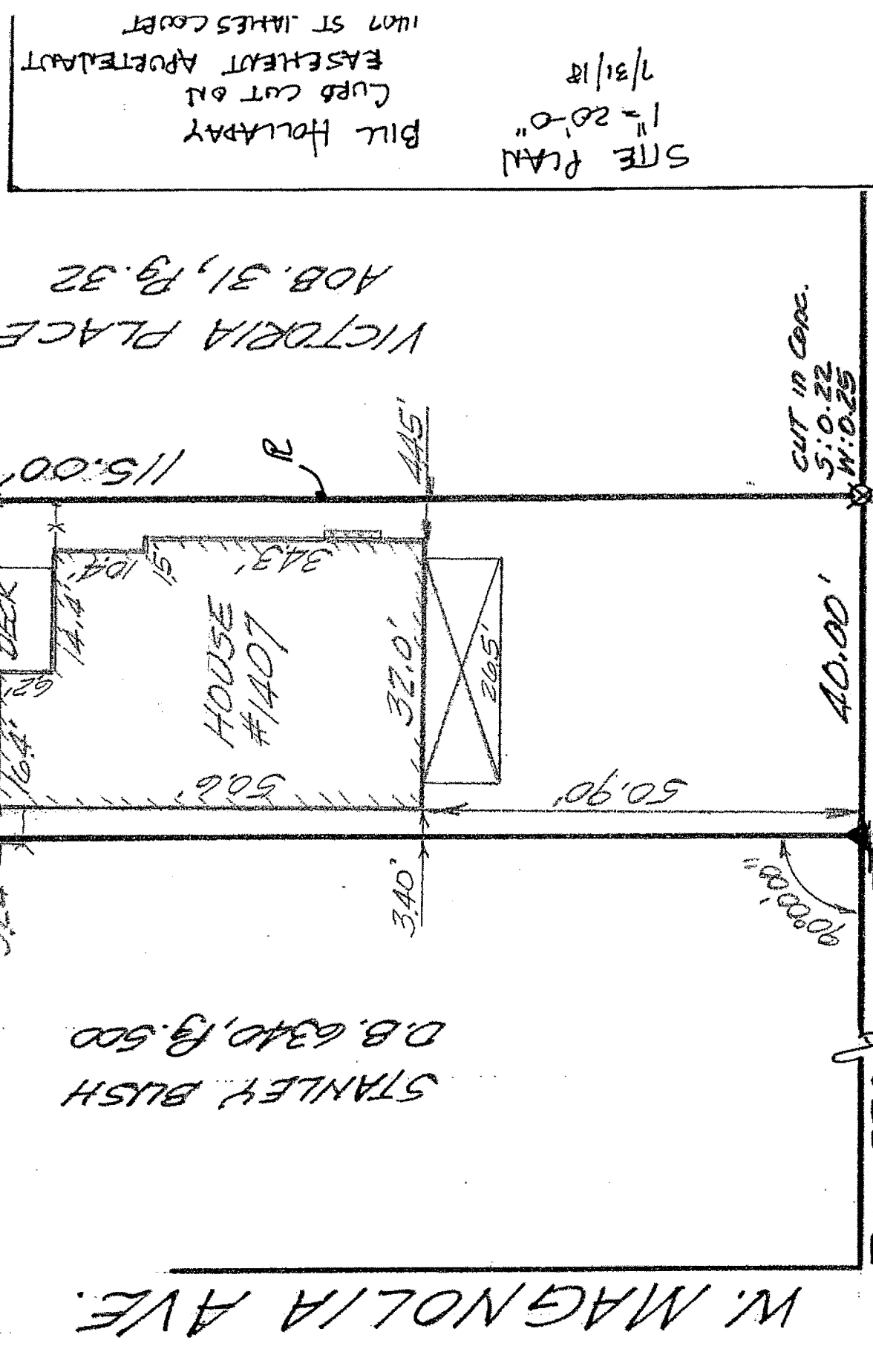
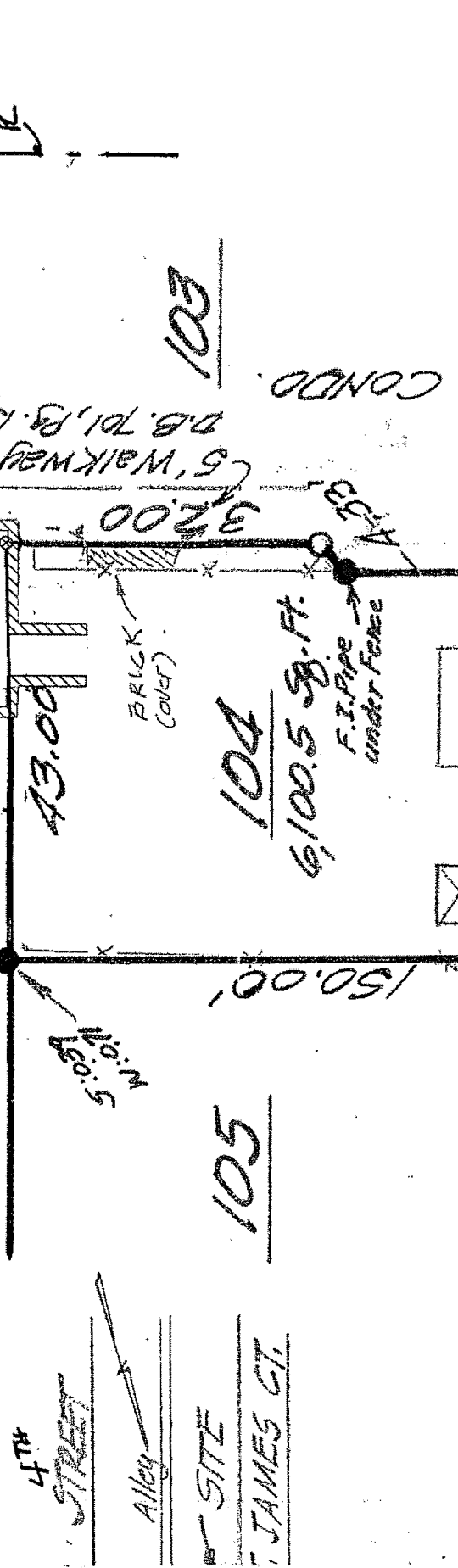
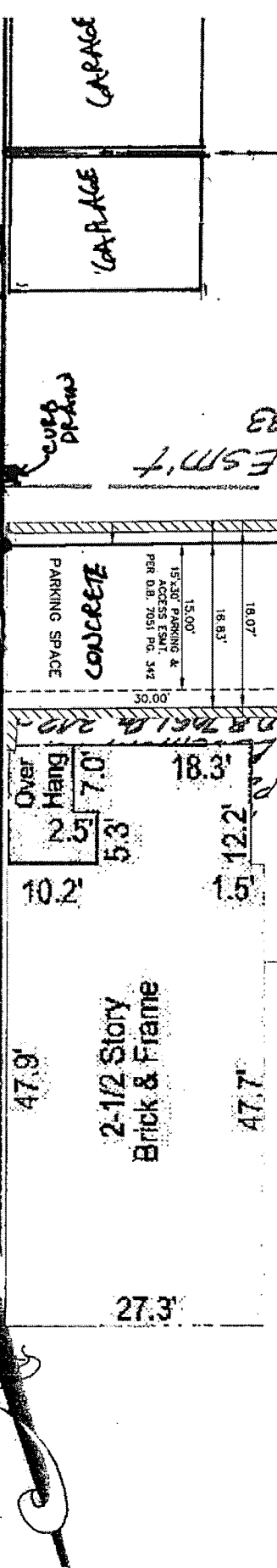
19-COA-0052



PARKING (ASPHALT)

RECEIVED  
JUL 31 2019  
PLANNING &  
DESIGN SERVICES

20' ALLEY - ASPHALT



1407 ST. JAMES COURT  
EASEMENT APERTURE  
CUT CUT ON  
BILL HOLLADAY  
7/31/18  
SITE PLAN  
1"=20'0"

1407 ST. JAMES COURT

19-COA-0057