

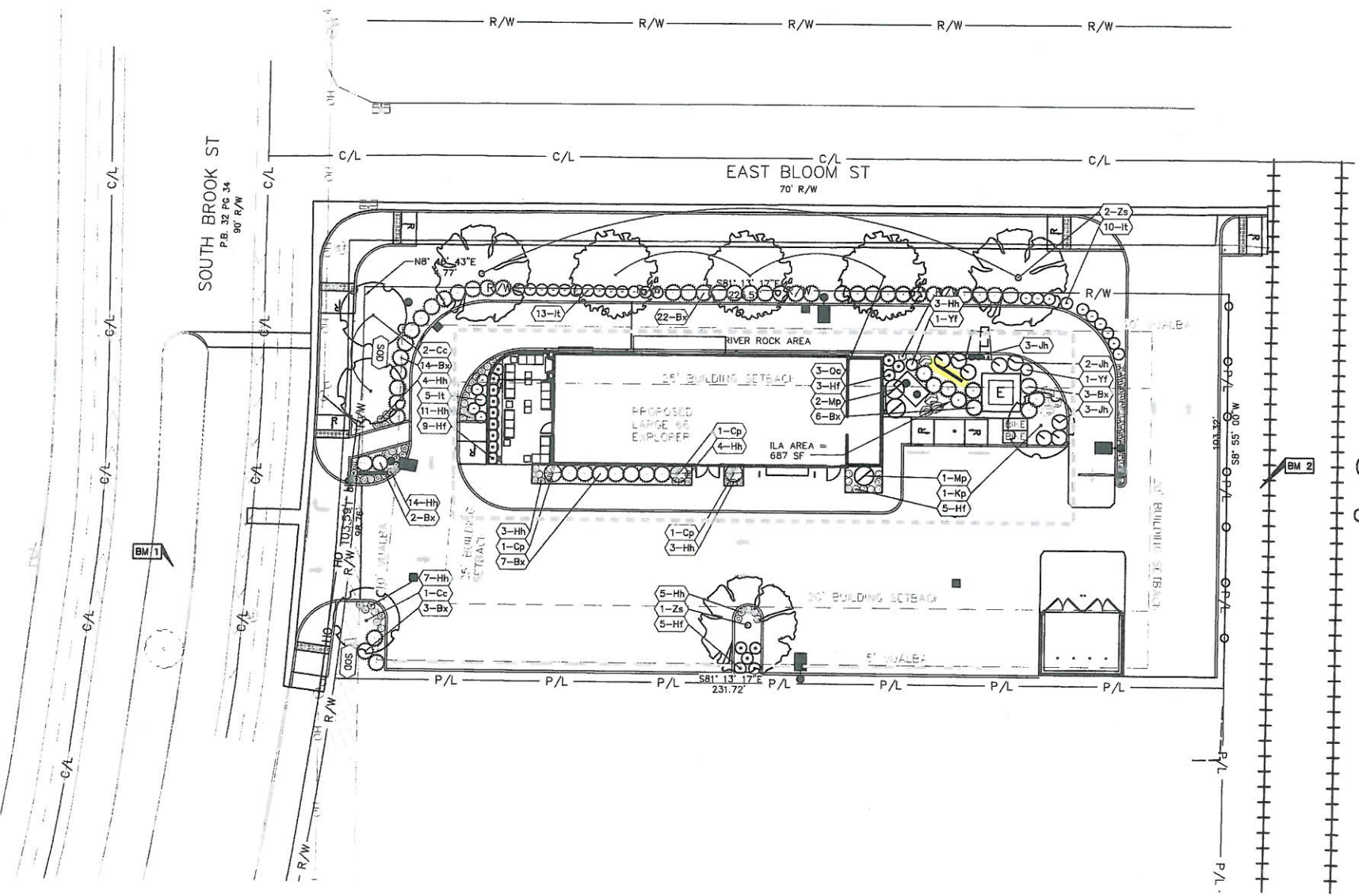
LEGEND

- PROPOSED TRENCHED EDGE
- PROPOSED TREE/SHRUB
- PROPOSED PLANT QUANTITY AND SYMBOL
- PROPOSED SODDED AREA
- PROPOSED LIMESTONE BOULDER (7) SEE L-501 DRIVE THRU OF THE FUTURE DETAIL FOR ADDITIONAL BOULDERS. DESERT SAND IN COLOR, 12" TO 36" IN SIZE
- PROPOSED RIVER ROCK MULCH TO MATCH LANDSCAPE MULCH, SEE SHEET L-001.

LANDSCAPE DATA CHART			
VEHICULAR USE AREAS		TREE CANOPY CALC.	
AREA OF VUA 11,898 SF DISTRICT : CAMPUS		CLASS C, 0% PRESERVED TREE CANOPY = 20% TREE CANOPY REQUIRED	
		REQUIRED: 20% OF 54 ACRES = 4,700 SF OF CANOPY	
		PROPOSED: 28% OF 54 ACRES = 6,528 SF OF CANOPY	
VJUALBA	REQUIRED	PROVIDED	
FRONT: S. BROOK ST	10'	11.0'	
REAR: CSX RAILROAD	N/A	1.8'	
SIDE: E. BLOOM ST.	10'	3.0'	
SIDE: SOUTH	5'	2.3'	
VIA = 5.0%		595 SF	687 SF
INTERIOR LANDSCAPE		3 TREES	2 TREES

- NOTES:**
- SERVICE STRUCTURES MUST BE SCREENED IN ACCORDANCE WITH 10.2.6 OF THE LAND DEVELOPMENT CODE. SERVICE STRUCTURES INCLUDE BUT ARE NOT LIMITED TO: PROPANE TANKS, DUMPSTERS, HVAC UNITS, ELECTRIC TRANSFORMERS, TELECOM BOXES.
 - LIGHT POLES, SIDEWALKS, BENCHES, ETC. SHALL NOT OCCUPY MORE THAN 25% OF ANY INTERIOR LANDSCAPE AREA (ILA) OR REDUCE THE WIDTH OF ANY PLANTED AREA TO LESS THAN 4 FEET. CONTRACTOR TO COORDINATE LIGHT POLE LOCATIONS WITH LANDSCAPE PLAN. LIGHT POLES SHALL NOT BE IN CONFLICT WITH PROPOSED PLANTINGS. 10.2.13.
 - GRASS OR GROUND COVER SHALL BE PLANTED ON ALL PORTIONS OF THE LANDSCAPE BUFFER AREA NOT OCCUPIED BY OTHER LANDSCAPE MATERIAL.
 - THE GROUND PLANE OF ALL INTERIOR LANDSCAPE AREAS SHALL BE PLANTED USING EITHER SHRUBS, GROUND COVER, OR TURF.
 - IT WILL BE THE RESPONSIBILITY OF THE PROPERTY OWNER TO PERPETUALLY MAINTAIN ALL LANDSCAPE AREAS AND ASSOCIATED PLANT MATERIAL REQUIRED UNDER LAND DEVELOPMENT CODE REGULATIONS. THE PROPERTY OWNER SHALL ALSO BE RESPONSIBLE FOR MAINTAINING THE VERGE AND ASSOCIATED TREES WITHIN THE VERGE LIMITS, THE AGENCY HAVING JURISDICTION OVER THAT VERGE ASSUMES THAT RESPONSIBILITY.
 - ALL UNHEALTHY OR DEAD PLANT MATERIAL SHALL BE REMOVED WITHIN ONE YEAR, OR BY THE NEXT PLANTING PERIOD, WHICHEVER OCCURS FIRST WHILE UTILIZING BEST MANAGEMENT PRACTICES. UNHEALTHY OR REPAIRED WITHIN THREE (3) YEARS.
 - PLANTING SHALL BE LOCATED WITHIN A UTILITY EASEMENT THAT IS DAMAGED BY THE PROPERTY OWNER. THE COMPANY SHALL BE IMMEDIATELY ADVISED BY THE PROPERTY OWNER IN ACCORDANCE WITH CHAPTER 10.02 REV. 03/01.
 - STREETS TREES SHALL BE PLANTED AT A DISTANCE THAT DOES NOT AFFECT PUBLIC SAFETY OR SIGN SIGHT DISTANCE.

CSX RAILROAD
 FORMERLY LOUISVILLE,
 CINCINNATI & LEXINGTON
 RAILROAD COMPANY
 D.B. 153 PG. 214



PLANT LIST

Symbol	Botanical Name	Common Name	Qty.	Min. Size	Condition	Remarks
Bx	Buxus 'Wintergreen'	Wintergreen Boxwood	60	18" H Min.	Cont.	3' o/c
Cc	Cercis canadensis 'Appalachian Red'	Appalachian Red Redbud Tree	3	2" Cal.	B&B	Speciman
Cp	Chamaecyparis pisifera 'Golden Map'	Golden Map False Cypress	3	24" H Min.	Cont.	Specimen
Hf	Hypericum frondosum 'Sunburst'	Sunburst St. Johns Wort	17	18" H Min.	Cont.	3' o/c
Hh	Hemerocallis 'Happy Returns'	Happy Returns Daylily	65	No. 1	Cont.	1.5' o/c
It	Itea virginica 'Henry's Garnet'	Virginia Sweetspire	28	18" H Min.	Cont.	3' o/c
Jh	Juniperus horizontalis 'Witani'	Creeping Juniper	8	No. 5	Cont.	4' o/c
Kp	Koeleruteria paniculata	Golden Rain Tree	1	2" Cal.	B&B	Speciman
Mp	Myrica pensylvanica 'Bobzam'	Bobee Northern Bayberry	3	24" H Min.	Cont.	4' o/c
Qc	Quercus coccinea	Scarlet Oak	3	3" Cal.	B&B	Speciman
Yf	Yucca filamentosa 'Golden Sword'	Golden Sword Yucca	2	No. 3	Cont.	2.5' o/c
Zs	Zelkova serrata 'Green Vase'	Green Vase Zelkova	3	2" Cal.	B&B	Speciman

RECEIVED

SEP 14 2015

PLANNING &
 DESIGN SERVICES



BENCHMARKS:

BENCHMARK #1	N 266125.86
	E 1207752.46
	ELEVATION=453.35
BENCHMARK #2	N 266105.96
	E 1208035.94
	ELEVATION=456.36

ISSUED FOR CONST. 08.26.15

CONTROLLING CASE: 2014088.15
 BUILDING TYPE: EXPLORER
 PLAN VERSION: June 2015
 SITE NUMBER: 310631 / 428936
 STORE NUMBER: 2014088.15

TACO BELL
 1801 S BROOK ST
 LOUISVILLE, KY 40208



LANDSCAPE PLAN

L-101

PLOT DATE:

ISVARIANCE 10.3