

81+00 LT. STA. 81+00 TO STA. 83+39 CONST. 195 S.Y. 10' ASPH. MULTI-USE PATH
 LT. STA. 83+39 TO STA. 83+55 CONST. 15 S.Y. 4' CONC. SIDEWALK W/ 26 S.F. DETECTABLE WARNINGS
 LT. STA. 81+00 TO STA. 83+59 CONST. 210 L.F. STD. CURB AND GUTTER (MOD.)
 LT. STA. 81+00 TO STA. 83+56 CONST. 604 S.Y. SODDING

82+00 STORM SEWER STRUCTURE DATA LEFT

83+00 STORM SEWER STRUCTURE DATA LEFT

84+00 LT. STA. 83+71 @ 0° SKEW CONST. DEVERAUX LANE APPROACH USING 119 S.Y. ASPHALT SURFACE (PVM'T. DESIGN VARIES, SEE X-SECTIONS)

85+00 ENTRANCES

86+00 LT. STA. 86+09 TO STA. 87+00 CONST. 92 L.F. GUARDRAIL REMOVE

STRUC. NO.	STRUCTURE TYPE	TOP OF GRATE	INVERT
MH14-04	JB TYPE BI	447.71	441.10
27-04	DBI TYPE II	445.00	442.58
28-04	DBI TYPE II	445.75	442.34
1022-04	CBI TYPE A-16-2	446.61	440.70
31-04	DBI TYPE II	444.50	441.50

STRUC. NO.	STRUCTURE TYPE	TOP OF GRATE	INVERT
33-04	DBI TYPE II	444.20	441.31
MH15-04	JB TYPE BI	445.88	439.41
1024-04	CBI TYPE A-26-2	443.80	438.25
1026-04	CBI TYPE A-16-1	443.23	438.95
1026-06	CBI TYPE A-6-6	443.15	436.92

STATION	WIDTH	CEM. CONC. ENT. PVM'T. - 8"	ENTRANCE PAVEMENT
LT. 81+29	15'	59 S.Y.	67 S.Y. - ASPHALT
LT. 81+61	13'	59 S.Y.	44 S.Y. - CONCRETE
LT. 85+71	22'	30 S.Y.	103 S.Y. - CONCRETE

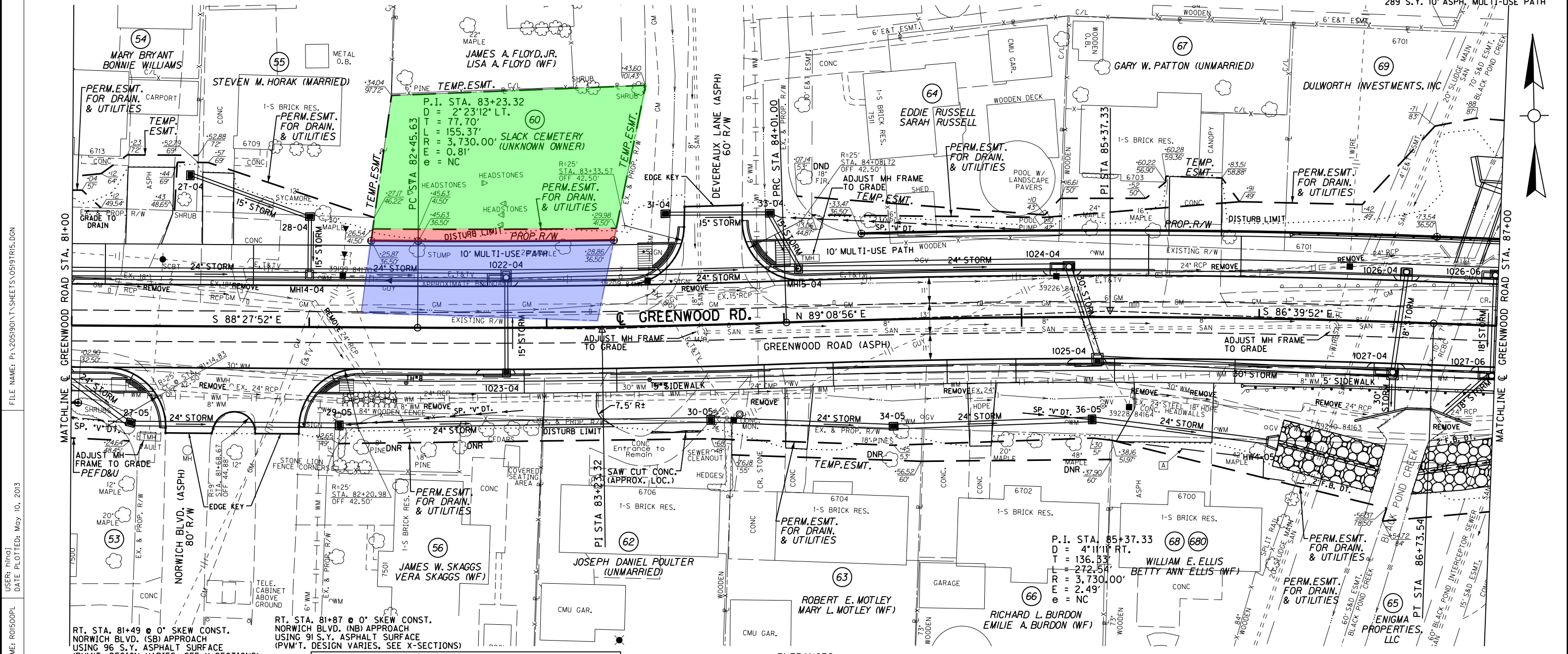
STA. TO STA.	SIZE/TYPE	CHANNEL LINING		
		TYPE	DEPTH	QUANTITY
83+95 - 85+00	SP. "V" DT.	SOD	1.5'	.

• QUANTITY INCLUDED IN THE GENERAL SOD QUANTITY

LT. STA. 83+86 TO STA. 87+00 CONST. 773 S.Y. SODDING

LT. STA. 83+84 TO STA. 87+00 CONST. 290 L.F. STD. CURB AND GUTTER (MOD.)

LT. STA. 83+97 TO STA. 87+00 CONST. 289 S.Y. 10' ASPH. MULTI-USE PATH



STRUC. NO.	STRUCTURE TYPE	TOP OF GRATE	INVERT
27-05	DBI TYPE II	445.56	440.28
29-05	DBI TYPE II	445.21	439.86
30-05	DBI TYPE II	445.50	439.09
34-05	DBI TYPE II	442.20	438.72
1023-04	CBI TYPE B-3-2	446.62	442.32
1025-04	CBI TYPE A-28-2	443.70	438.04
1027-04	CBI TYPE A-28-2	443.24	437.00

STA. TO STA.	SIZE/TYPE	CHANNEL LINING		
		TYPE	DEPTH	QUANTITY
81+00 - 81+25	SP. "V" DT.	SOD	1.5'	.
82+13 - 82+90	SP. "V" DT.	SOD	1.5'	.
85+00 - 85+30	SP. "V" DT.	SOD	1.5'	.
86+09 - 86+52	2' F.B. DT.	CL III	2.0'	97 TONS
86+69 - 87+00	2' F.B. DT.	CL III	2.0'	67 TONS

STATION	WIDTH	CEM. CONC. ENT. PVM'T. - 8"	ENTRANCE PAVEMENT
RT. 83+10	22'	43 S.Y.	38 S.Y. - CONCRETE
RT. 84+05	12'	32 S.Y.	30 S.Y. - CONCRETE
RT. 84+83	12'	32 S.Y.	31 S.Y. - CONCRETE
RT. 85+64	33'	56 S.Y.	98 S.Y. - ASPHALT

STRUC. NO.	STRUCTURE TYPE	TOP OF GRATE	INVERT
36-05	DBI TYPE II	441.42	438.31
HW4-05	24' S&F HDWL	...	437.95
1027-06	CBI A-6-6	443.15	436.11

• QUANTITY INCLUDED IN THE GENERAL SOD QUANTITY

RT. STA. 81+00 TO STA. 81+40 CONST. 100 S.Y. SODDING

RT. STA. 81+00 TO STA. 81+40 CONST. 51 L.F. STD. CURB AND GUTTER (MOD.)

RT. STA. 81+60 TO STA. 81+77 CONST. 15 S.Y. SODDING IN MEDIAN OF NORWICH BLVD.

RT. STA. 81+39 TO STA. 81+96 CONST. 38 L.F. EDGE KEY

RT. STA. 81+99 TO STA. 87+00 CONST. 1621 S.Y. SODDING

RT. STA. 81+96 TO STA. 87+00 CONST. 402 L.F. STD. CURB AND GUTTER (MOD.)

RT. STA. 81+00 TO STA. 81+31 CONST. 17 S.Y. 4' CONC. SIDEWALK W/ 16 S.F. DETECTABLE WARNINGS

RT. STA. 83+42 TO STA. 83+64 REMOVE 1 S.Y. CONC. PAVEMENT

RT. STA. 85+93 TO STA. 87+00 REMOVE 107 L.F. GUARDRAIL

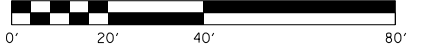
RT. STA. 85+93 TO STA. 87+00 CONST. 50 L.F. STEEL "W" BEAM GUARDRAIL (SF) W/ 1-END TREATMENT TYPE 1

RT. STA. 83+43 TO STA. 83+65 CONST. 21 L.F. SAWCUTTING

RT. STA. 82+04 TO STA. 87+00 CONST. 193 S.Y. 4' CONC. SIDEWALK W/ 16 S.F. DETECTABLE WARNINGS

RIGHT OF WAY PLANS

PLAN SHEET
GREENWOOD ROAD (KY 1931)
STA. 81+00 TO STA. 87+00



FILE NAME: P:\2051901\T\SHEETS\051915.DGN
 USER: mingo
 DATE PLOTTED: May 10, 2013
 E-SHEET NAME: R01500PL
 Power InRoads v8.11.9.397