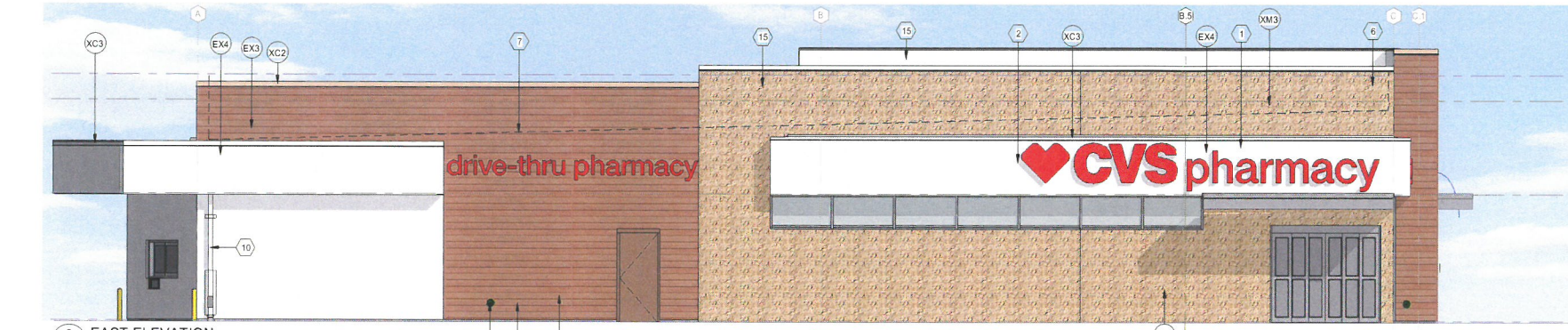
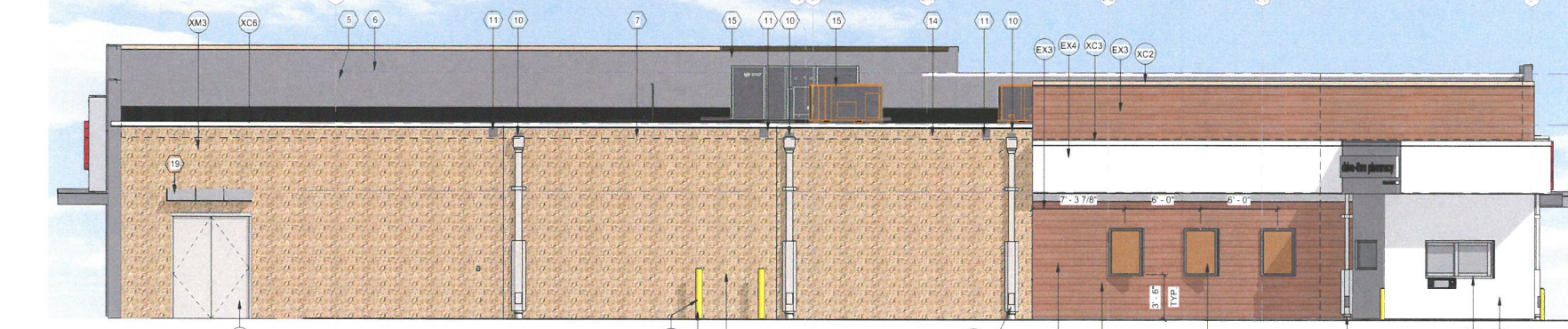


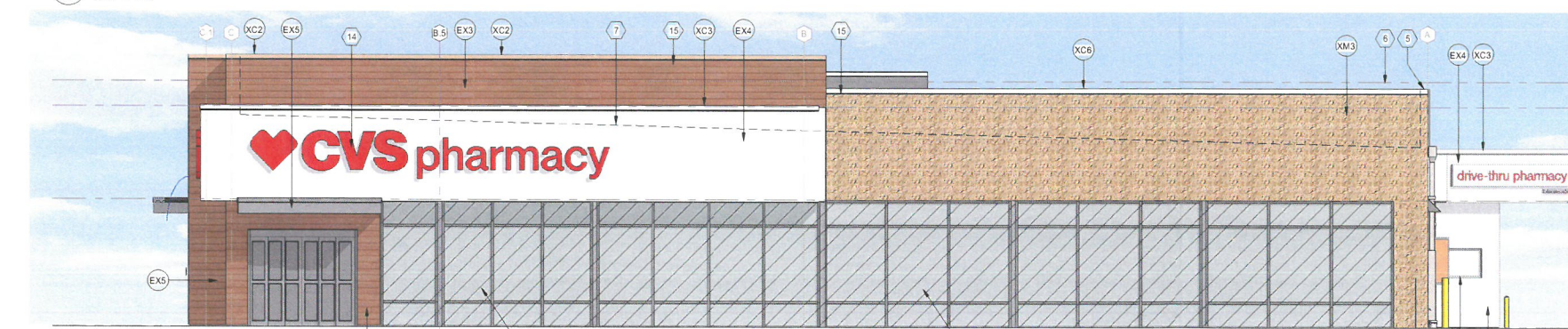
1 E BROADWAY STREET (NORTH ELEVATION) GLAZING PERCENTAGE 42% CLEAR GLAZING (TYP.)



2 EAST ELEVATION GLAZING PERCENTAGE 42% CLEAR GLAZING (TYP.)



3 SOUTH ELEVATION GLAZING PERCENTAGE 42% CLEAR GLAZING (TYP.)



4 S PRESTON STREET (WEST ELEVATION) GLAZING PERCENTAGE 44% INTERIOR DISPLAY WALL (HATCHED)

EXTERIOR FINISH SCHEDULE			
MATERIAL	MANUFACTURER	DESCRIPTION	COMMENTS
EX2	NICHHA / BENJAMIN MOORE	ILLUMINATION SERIES, SNOP PAINTED; BENJAMIN MOORE NORTH CREEK BROWN 1001 FINISH SMOOTH SIZE 18" X 10" CUT EDGES PAINTED IN FIELD TO MATCH	
EX3	NICHHA	VINTAGE WOOD, COLOR: CEDAR, SIZE: 18" X 10", CUT EDGES PAINTED IN FIELD TO MATCH	FIBER CEMENT PANEL
EX4	STO	STO LOTUSAN SYSTEM, 191 STOLIT, LOTUSAN 1.5, COLOR: 9433 80 STO WHITE	GEMENTITIOUS PANEL
EX5	RE - SPECIFICATIONS	ALUMINUM WITH CLEAR ANODIZED COATING	
EX9	RE - SPECS	PLASTIC TO MATCH OSHA YELLOW	PLASTIC TO MATCH OSHA YELLOW
XC2	PAC-CLAD	PREFINISHED ALUMINUM COPING, COLOR: SIERRA TAN	
XC3	PAC-CLAD	PREFINISHED ALUMINUM COPING, COLOR: BONE WHITE	
XC6	PAC-CLAD	PREFINISHED ALUMINUM COPING, COLOR: ALMOND	
XM3	ECHOLON / ADAMS	ADAMS PROFILE SPLIT FACE UNITS (PSF), COLOR 4308 (OAK); MORTAR COLOR: LAFARGE SAHARA 320	MORTAR COLOR: LAFARGE SAHARA 320
XP1	FIRESTONE	METAL ROOF EDGE, COLOR: PAINT, BM 1001 (4B) NORTH CREEK BROWN, FINISH: SATIN	
XP2	FIRESTONE	METAL ROOF EDGE, COLOR: PAINT, PPG1079-6 CARVEL BROWN, FINISH: SATIN	
XP3	BENJAMIN MOORE	PAINT: BM AC-40 GLACIER WHITE, FINISH: SATIN	
XP7	PPG	PAINT: PPG OSTRICH FEATHER 413-3 FINISH: SATIN	
XP12	BENJAMIN MOORE	PAINT: HC-190 BLACK, FINISH: SATIN	

NOTE 1: SIGNAGE UNDER SEPARATE PERMIT. REFER TO APPROVED SIGNAGE PACKAGE FROM SIGNAGE VENDOR FOR SIZES AND LOCATIONS OF SIGNS. EXTERIOR SIGNAGE TO BE EXPANSION ANCHORED.
 NOTE 2: REFER TO SHEET S3 FOR CONTROL JOINT LOCATIONS.
 NOTE 3: PAINT ALL EXPOSED CMU BLOCK AT GRADE UNDER NICHHA XP12.
 NOTE 4: PAINT UNDERSIDE OF BUMPOUT, CANOPIES AND ALL SIGN BANDS XP3.

EXTERIOR KEYED NOTES	
#	Notes
1	ILLUMINATED SIGNAGE CENTERED VERTICALLY IN CANOPY
2	ILLUMINATED ANCILLARY SIGN
3	SMOOTH "GREY" CMU BLOCK TO BE USED BEHIND EXTERIOR FINISHES
4	SPACE SMOOTH PANEL JOINTS AS SHOWN IN ELEVATION TO MINIMIZE MATERIAL WASTE. REFER TO WALL SECTIONS FOR VERTICAL PANEL JOINT DETAIL, TYP.
5	RETURN MATERIAL @ ENDS OF PARAPETS, TYP.
6	PARAPET BEYOND
7	ROOF LINE
8	STORE HOURS PLAQUE
9	MIN. 6" HIGH ADDRESS SIGN ON CONTRASTING BACKGROUND (CONFIRM HEIGHT, LOCATION AND QUANTITY WITH LOCAL FIRE MARSHAL)
10	DOWNSPOUT & GUARD, RE: DOWNSPOUT GUARD AND C.O. DETAIL
11	OVERFLOW SCUPPER
12	DOWNSPOUT NOZZLE
13	DRIVE THRU DOWNSPOUT
14	EXTERIOR WALL PACK LIGHT, RE: ELEC
15	LINE OF RTU BEYOND
16	ELECTRIC METERING CABINET, RE: ELEC
17	GAS METER LOCATION, RE: PLUMBING
18	BOLLARD RE: SPECIFICATIONS
19	RAIN HOOD
20	PHARMACY ADVERTISING DISPLAY BOARD, GC TO PURCHASE AND INSTALL RE: ELEC
21	PAIN J-BOX TO MATCH

RECEIVED
 AUG 12 2019
 PLANNING & DESIGN SERVICES

CS 088963 - JCD 16.0119 - LOUISVILLE, KY - E. BROADWAY & S. PRESTON

