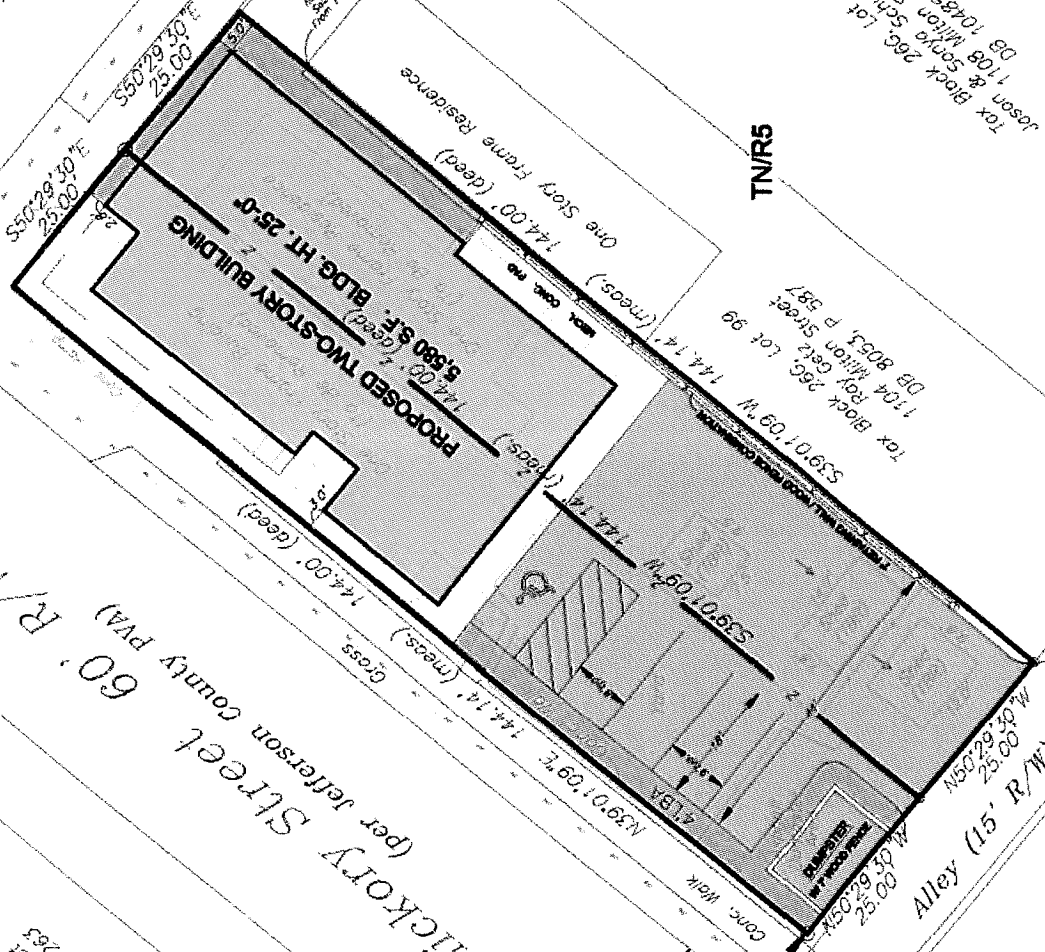


RECEIVED  
NOV 7 2015  
PLANNING &  
DESIGN SERVICES

Milton Street 60' R/W  
(per Jefferson County PVA)

HICKORY Street 60' R/W  
(per Jefferson County PVA)

Alley (15' R/W)



TN/R5

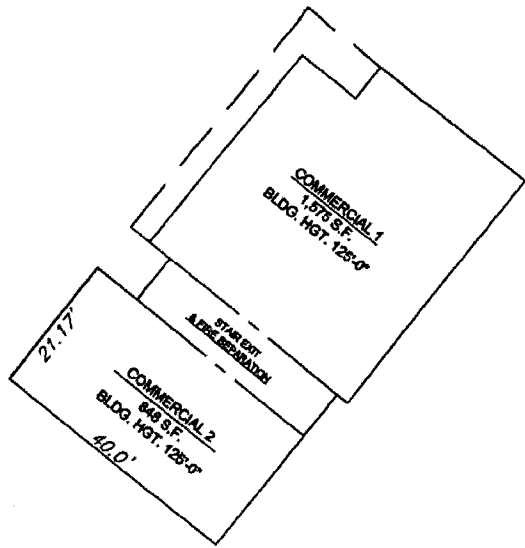
TN/R5

TN/C2

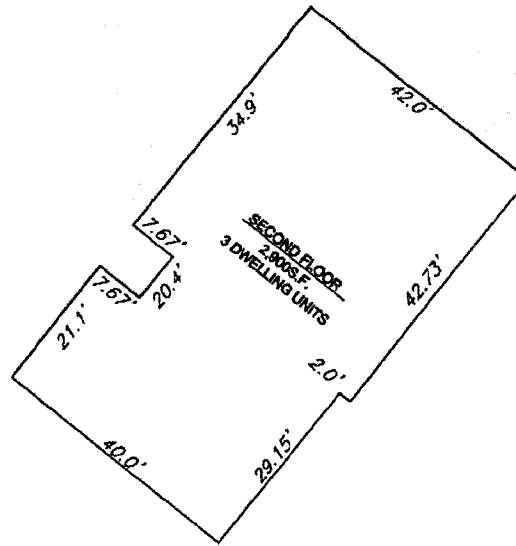
JK Block 265, Lot 83  
1036 Milton Street  
DB 10245, p 514  
TX Block 265, Lot 84  
1038 Milton Street  
DB 10302, p 263

Tax Block 265, Lot 100  
Jason & Sophia Schumacher  
DB 10435, p 81  
DB Block 265, Lot 99  
1104 Milton Street  
DB 8063, p 387  
Tax Block 265, Lot 98  
1104 Milton Street  
DB 8063, p 387  
Tax Block 265, Lot 97  
1104 Milton Street  
DB 8063, p 387

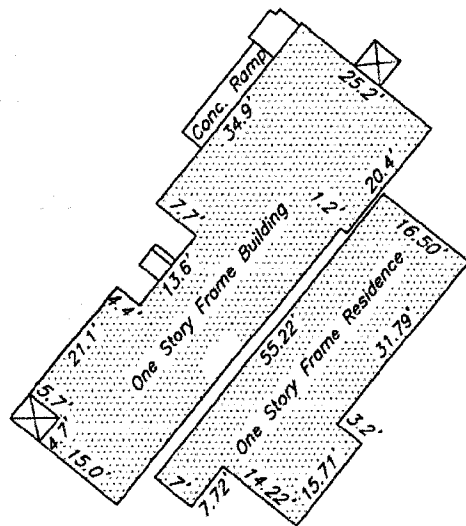




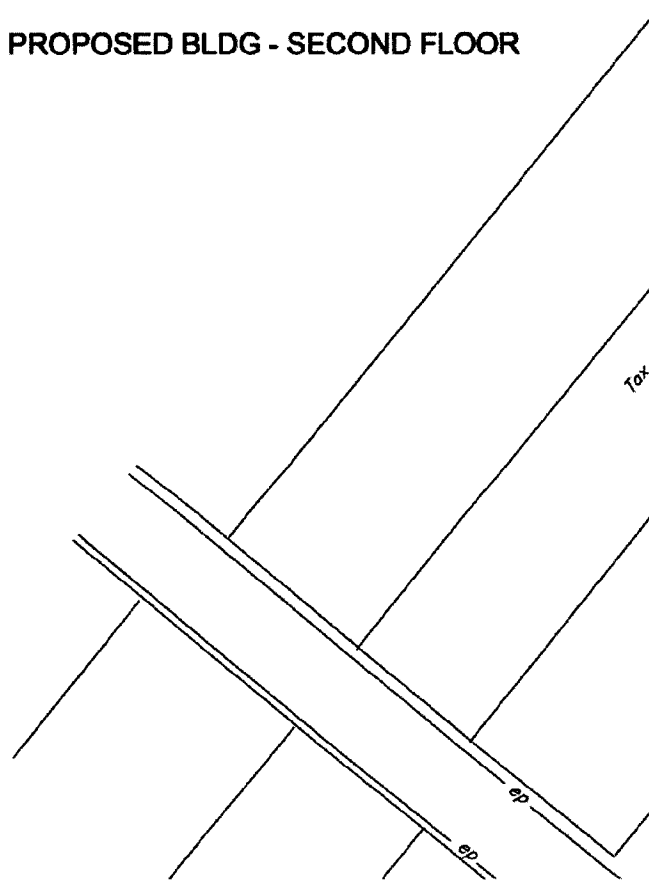
PROPOSED BLDG - FIRST FLOOR



PROPOSED BLDG - SECOND FLOOR



1-STORY EXISTING BUILDINGS  
TO BE REMOVED

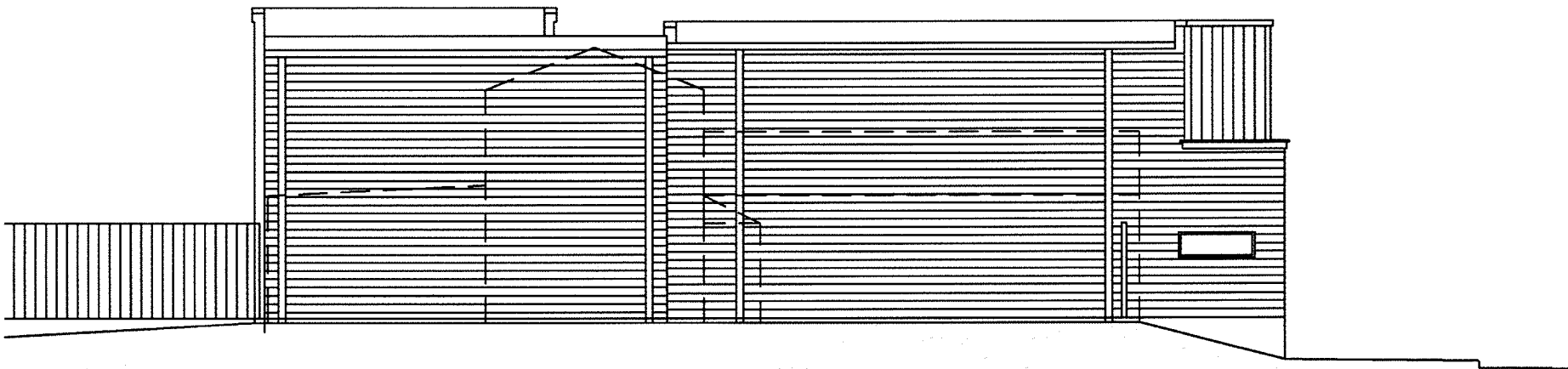


RECEIVED  
NOV 21 2014  
PLANNING &  
DESIGN SERVICES

RECEIVED

NOV 27 2010  
PLANNING &  
DESIGN SERVICES

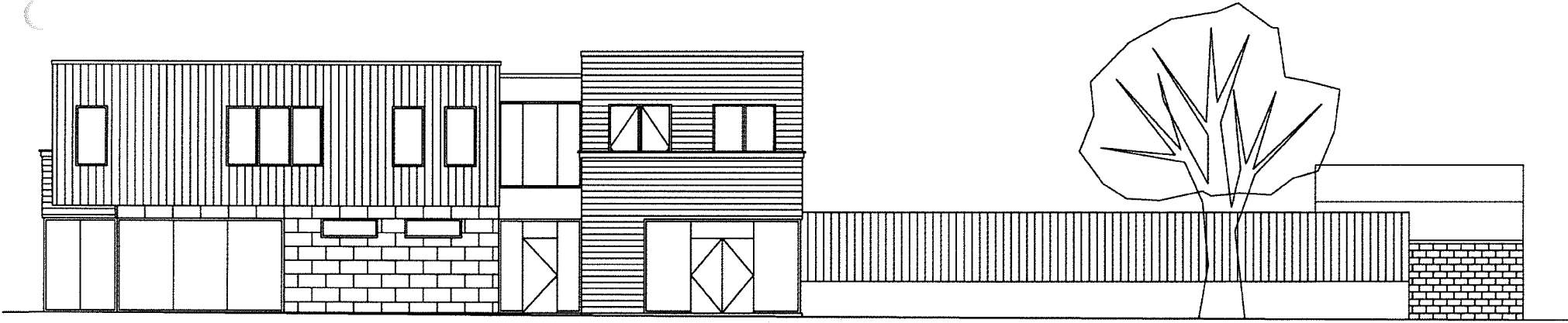
16 ZONE 10 67



**SIDE ELEVATION**  
1/8"=1'-0"

RECEIVED  
NOV 21 2010  
PLANNING &  
DESIGN SERVICES

16 ZONE 10.67



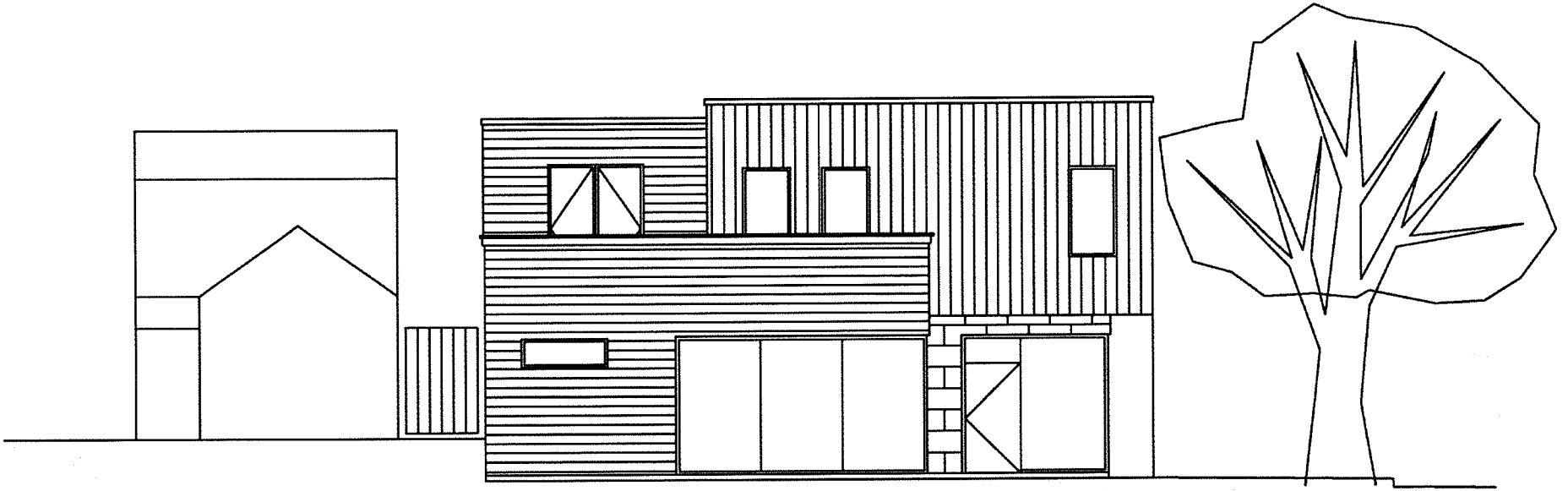
HICKORY ELEVATION  
1/8"=1'-0"

RECEIVED

NOV 27 2016

PLANNING &  
DESIGN SERVICES

16 ZONE 3067



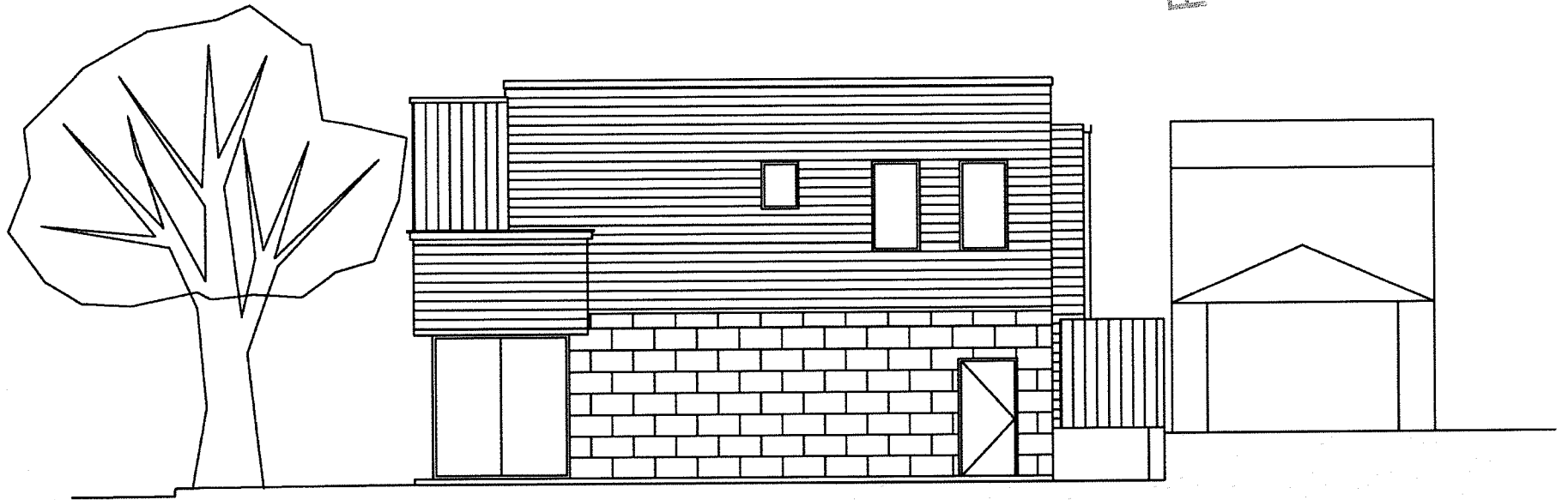
MILTON ELEVATION  
1/8"=1'-0"

RECEIVED

NOV 2 2 10

PLANNING &  
DESIGN SERVICES

16 ZONE 10.67



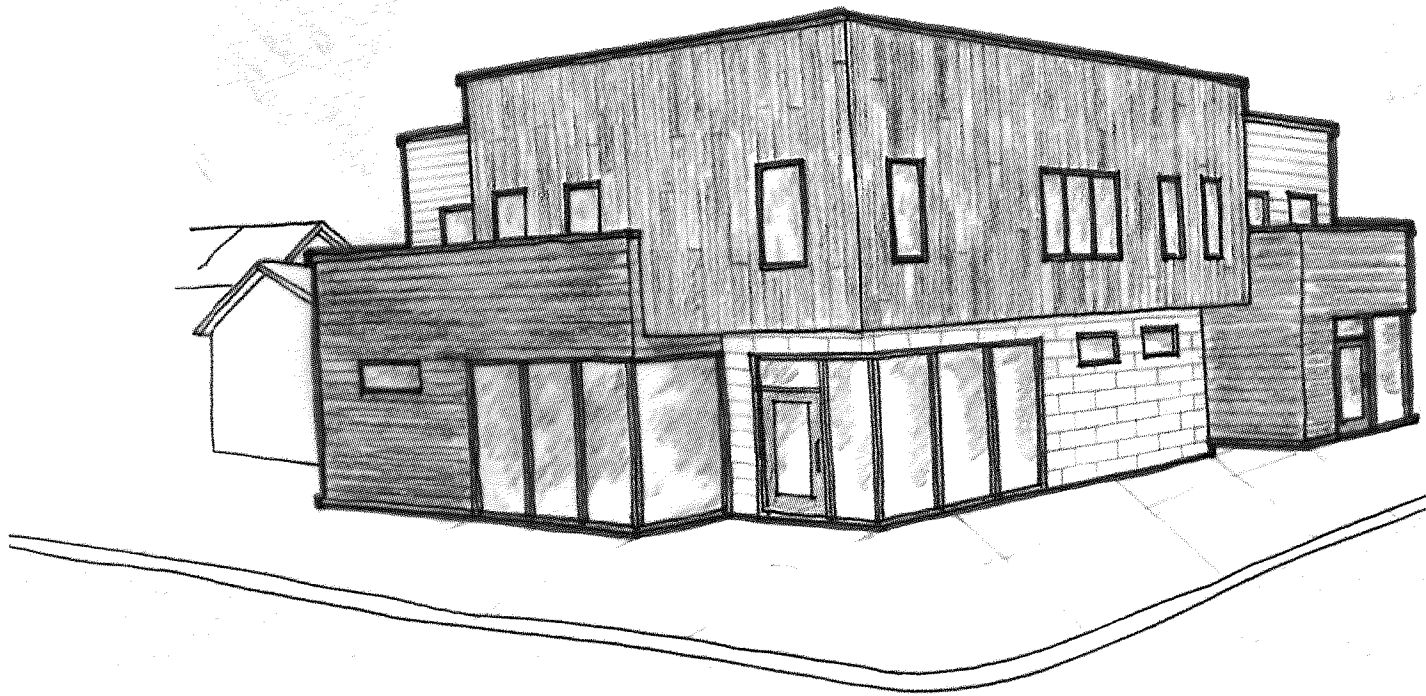
**BACK ELEVATION**

1/8"=1'-0"

RECEIVED

NOV 21 2016

PLANNING &  
DESIGN SERVICES



65 TONE 1067



RECEIVED  
NOV 21 2016  
PLANNING &  
DESIGN SERVICES

16 ZONE 1067



View looking south down Hickory Street. Site is to the left.

RECEIVED  
NOV 21 2017  
PLANNING &  
DESIGN SERVICES

16 ZONE 1067



View looking west down Milton Street towards Hickory Street. Site is to the left.

RECEIVED  
NOV 21 2016  
PLANNING &  
DESIGN SERVICES

16 ZONE 1067



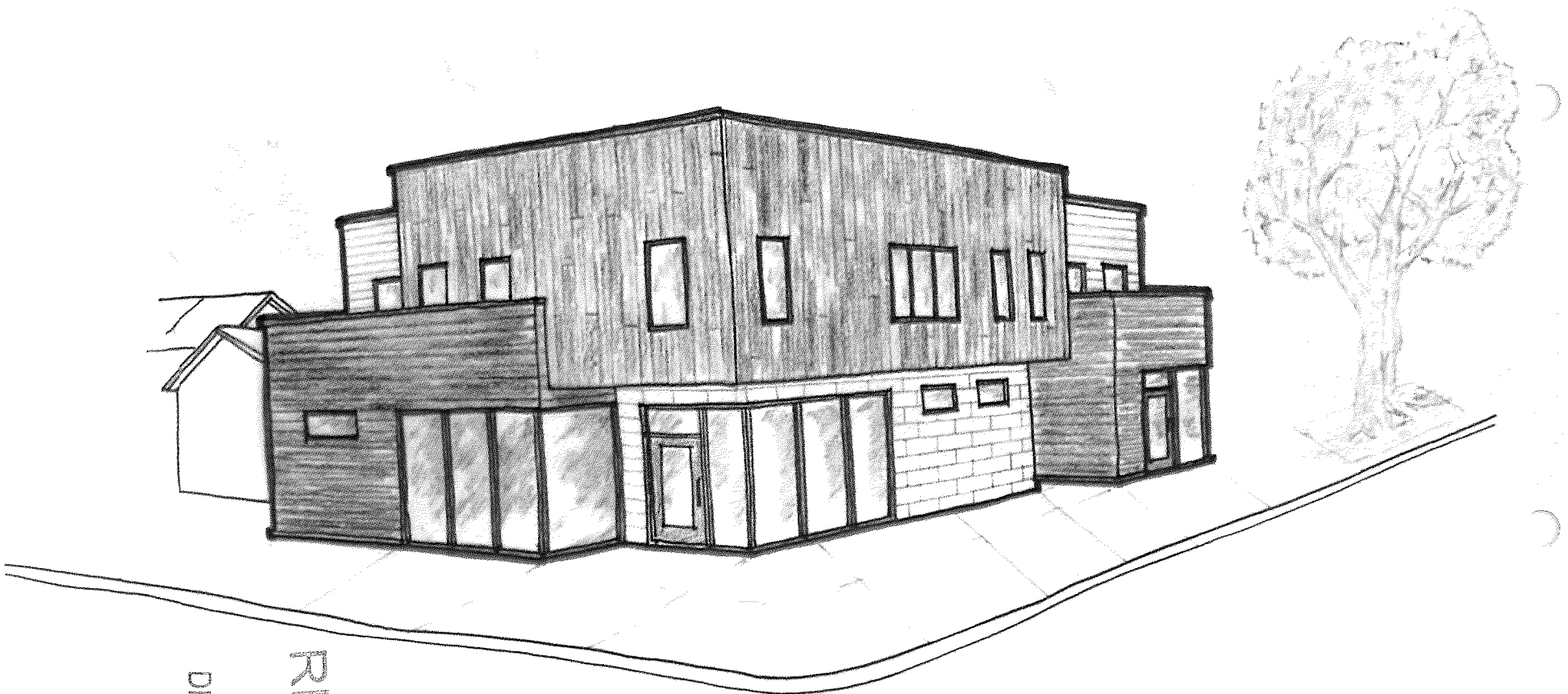
View looking east down Milton Street at Hickory Street intersection. Site is to the right.

RECEIVED  
NOV 21 2016  
PLANNING &  
DESIGN SERVICES

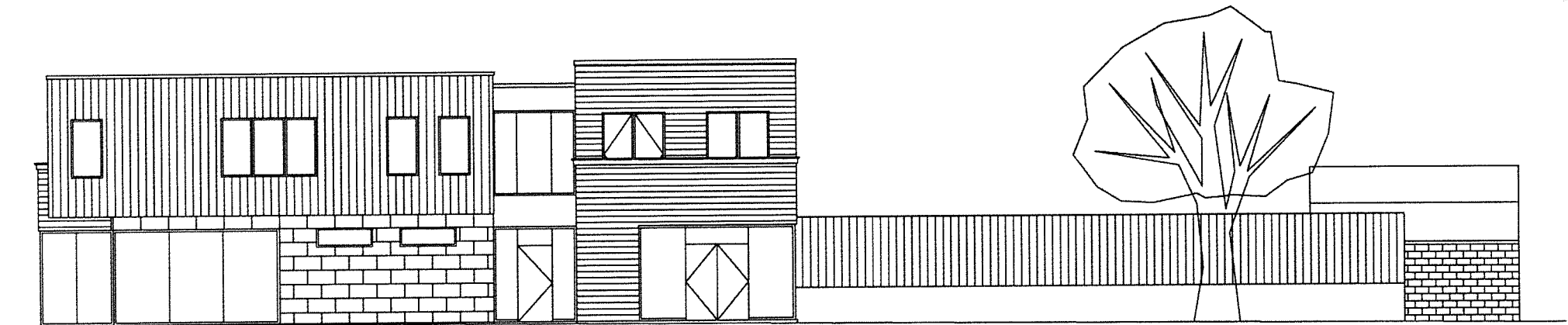
16 ZONE 1067



View looking north down Hickory Street towards Milton Street. Site is to the right.



RECEIVED  
NOV 21 2011  
PLANNING &  
DESIGN SERVICES

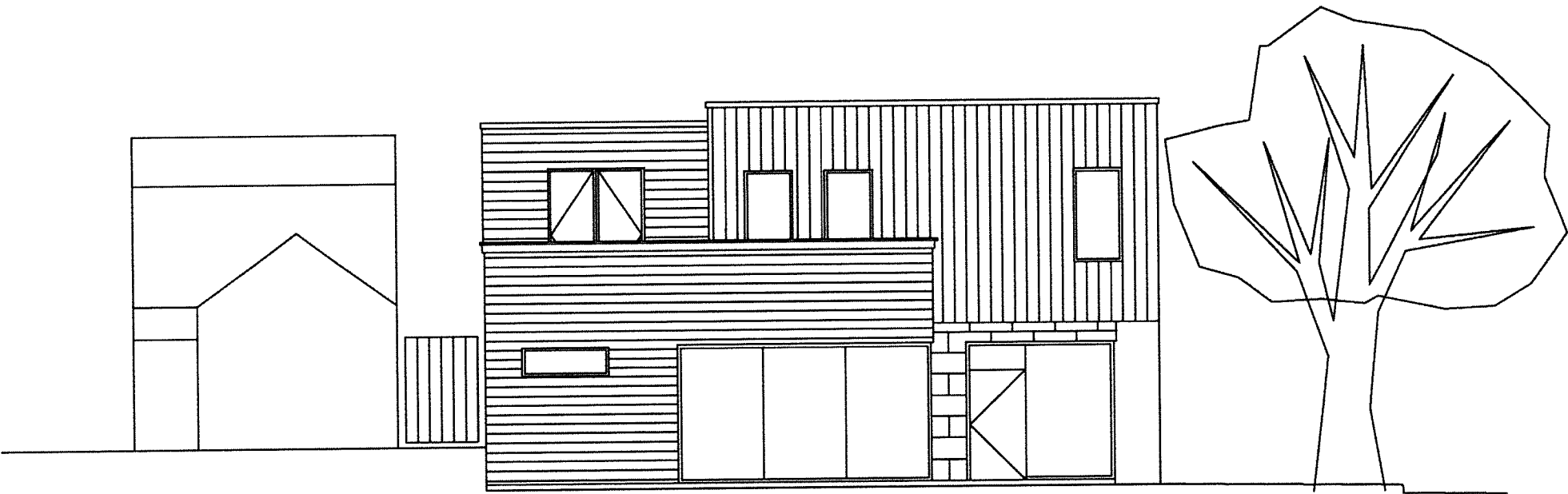


HICKORY ELEVATION

1/8"=1'-0"

RECEIVED  
NOV 21 2018  
PLANNING &  
DESIGN SERVICES

16 ZONE 1047

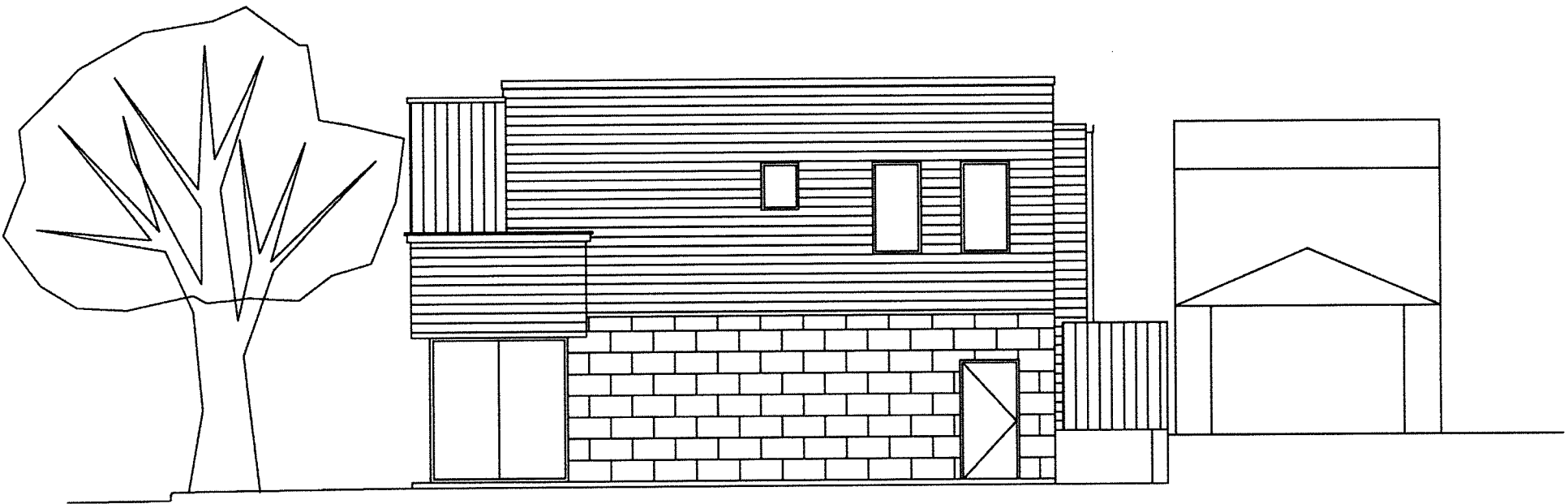


MILTON ELEVATION

1/8"=1'-0"

RECEIVED  
NOV 21 2016  
PLANNING &  
DESIGN SERVICES

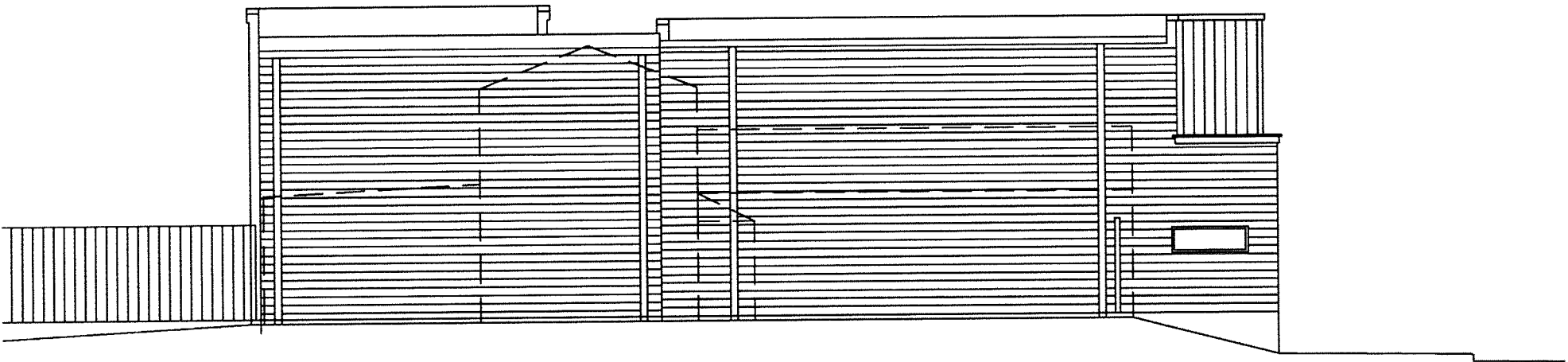
16 ZONE 1067



**BACK ELEVATION**  
1/8"=1'-0"

**RECEIVED**  
NOV 21 2016  
PLANNING &  
DESIGN SERVICES





**SIDE ELEVATION**

1/8"=1'-0"

RECEIVED  
NOV 21 2016  
PLANNING &  
DESIGN SERVICES

16 7000 4007