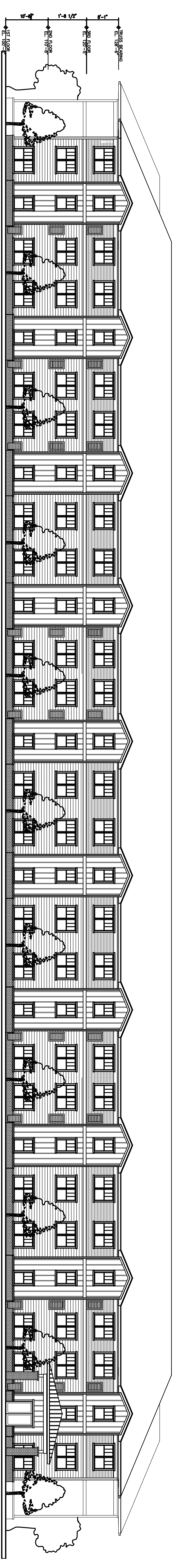
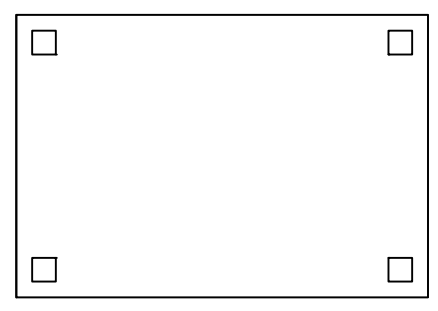


BUILDING PLAN - PARTIAL
1/16" = 1'-0"



BUILDING ELEVATION - TYPICAL
1/16" = 1'-0"



Proposed Cane Run Road Development
Louisville, Kentucky
CONCEPTUAL MASTER PLAN

PROJECT: PROPOSED CANE RUN ROAD DEVELOPMENT
 DATE: 11.5.2014
 DRAWING: SITE PLAN
 SCALE: AS SHOWN
 PROJECT NO.: XXX-XX-XXXX
 SHEET: XX OF XX REVISION: XX

HENSON PARTNERSHIP
 ARCHITECTS
 11119 FORT MEADE AVENUE
 SUITE 100
 LOUISVILLE, KY 40224
 502.261.1199 FAX
 www.hensonpartnership.com

This drawing and the related associated work are the property of Henson Partnership, Inc. and are to be used only for the project and location identified herein. No part of this drawing may be reproduced or transmitted in any form or by any means, electronic or mechanical, including photocopying, recording, or by any information storage and retrieval system, without the prior written permission of Henson Partnership, Inc. All rights reserved. Copyright © 2014 Henson Partnership, Inc. All rights reserved.