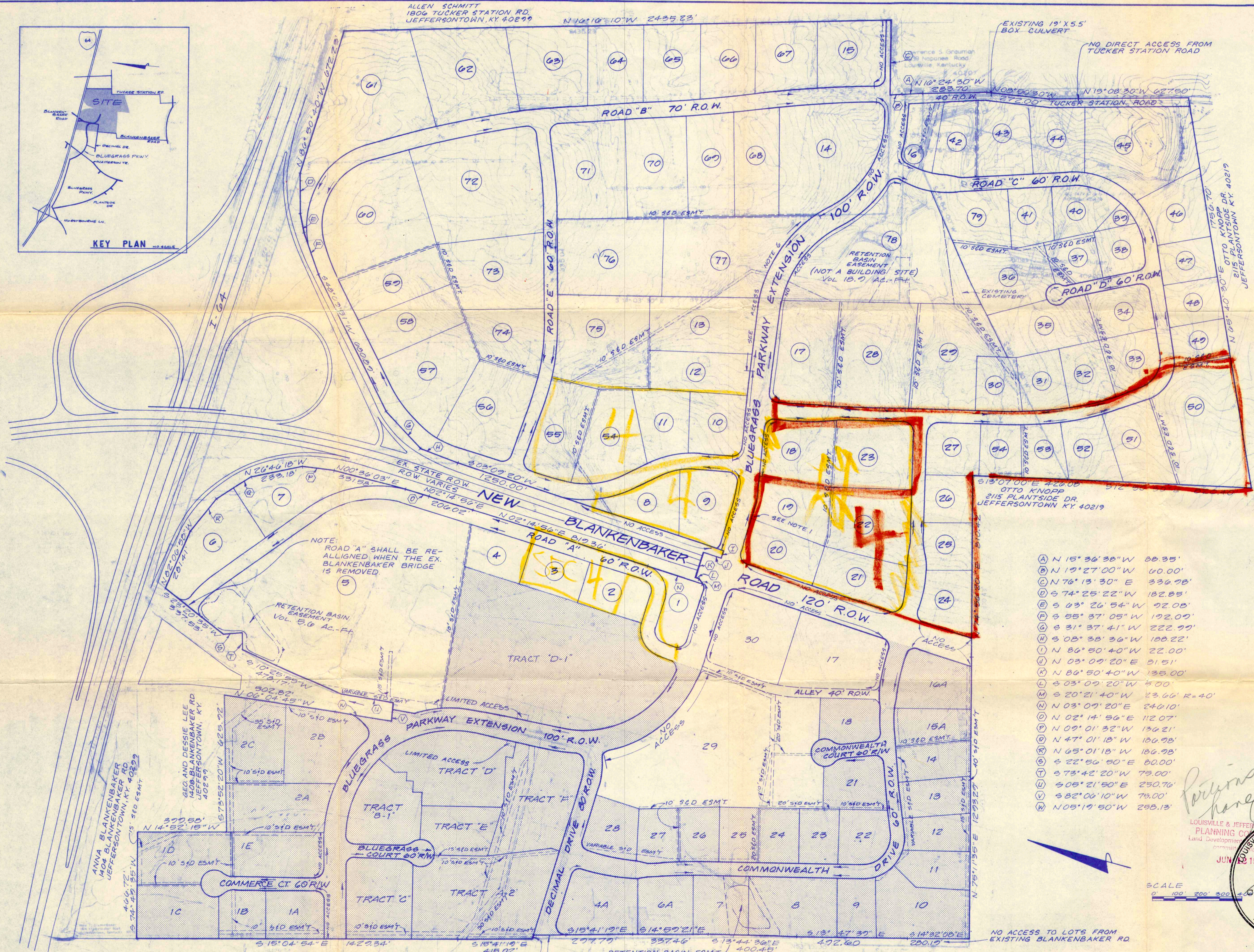
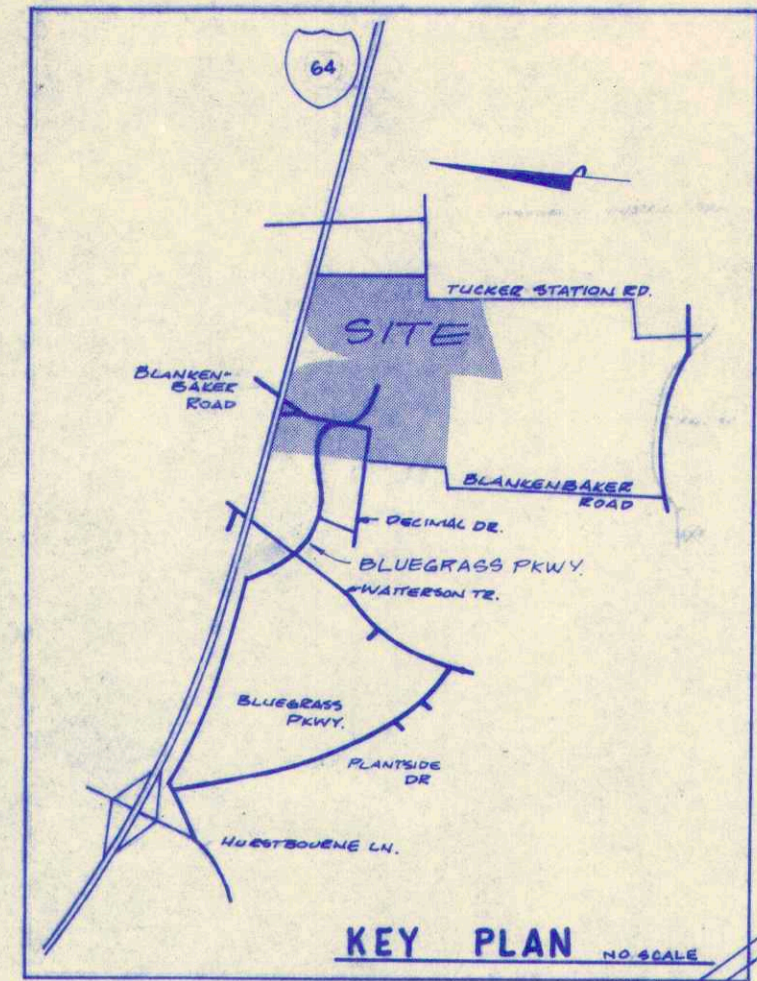


ALLEN SCHMITT
1806 TUCKER STATION RD.
JEFFERSONTOWN, KY 40299



DATA
EXISTING ZONING MP-2A, H9
TOTAL ACREAGE 313.46

**LOT 78
STORM DETENTION CALCULATIONS**

Co = .35
CN = .83
TOTAL ACREAGE FOR BASIN = 16.3 AC.
[(CN-Co)(P/12)] (TOTAL ACREAGE = REQUIRED STORAGE)
[(.83-.35)(2.7/12)] [16.3] = 18.9 AC. FT.

COUNTY WATER MANAGEMENT NOTES:

- DRAINAGE PATTERN DEPICTED BY ARROWS (→) IS FOR CONCEPT PURPOSES ONLY. FINAL CONFIGURATION OF DRAINAGE PIPES AND CHANNELS WILL BE DETERMINED DURING THE CONSTRUCTION DESIGN PROCESS. DRAINAGE FACILITIES SHALL CONFORM TO WATER MANAGEMENT REQUIREMENTS.
- RETENTION BASIN DESIGN BASED ON HYDROGRAPH ANALYSIS. ADJUSTMENT OF VALUES MAY BE NECESSARY DURING CONSTRUCTION PLAN PHASE.

- NOTES:
- TRACTS DEF AND LOTS 19&20 SHALL BE LIMITED TO ONE COMMON ACCESS POINT TO BLUEGRASS PARKWAY
 - ACCESS TO BLUEGRASS PARKWAY FROM TRACT D-1 & LOT 5 SHALL BE LIMITED TO THE EASEMENTS SHOWN ON THIS PLAN.
 - LOTS 4-A THRU 10 SHALL HAVE NO ACCESS TO BLANKENBAKER ROAD.
 - LOTS 4A&28 SHALL HAVE NO ACCESS TO DECIMAL DRIVE.
 - ACCESS TO NEW BLANKENBAKER RD. IS FROM BLUEGRASS PARKWAY AND COMMONWEALTH DRIVE ONLY; NO FRONTING LOTS SHALL HAVE ACCESS TO NEW BLANKENBAKER ROAD.
 - ACCESS TO LOTS 12, 13, 77 SHALL BE LIMITED TO TWO POINTS

RECEIVED
JUN 05 1986
10-12-78
LOUISVILLE & JEFFERSON COUNTY PLANNING COMMISSION

PRELIMINARY APPROVAL DEVELOPMENT PLAN

CONDITIONS:

DATE: 6-4-86

JEFFERSON COUNTY DEPT. OF PUBLIC WORKS

LOUISVILLE & JEFFERSON COUNTY PLANNING COMMISSION

PRELIMINARY PLAN APPROVED

DATE: 6/12/86

REVISOR APPROVED PLAN - PLS

BLANKENBAKER CROSSINGS

OWNER & DEVELOPER

JULIAN S & DORIS K MARSH
1900 TUCKER STATION RD
JEFFERSONTOWN, KY 40299

SABAK, WILSON & LINGO, INC.
ENGINEERS, LANDSCAPE ARCHITECTS & PLANNERS
300 WEST MAIN STREET, LOUISVILLE, KENTUCKY 40202 (502) 584-6771

SCALE 1"=200'

DRAWN DATE: 12-18-85

FILE 559
No. 1
Sheet in Set

NTS DEVELOPMENT CO.
10172 LINN STATION RD
LOUISVILLE, KY 40223

10.12-78