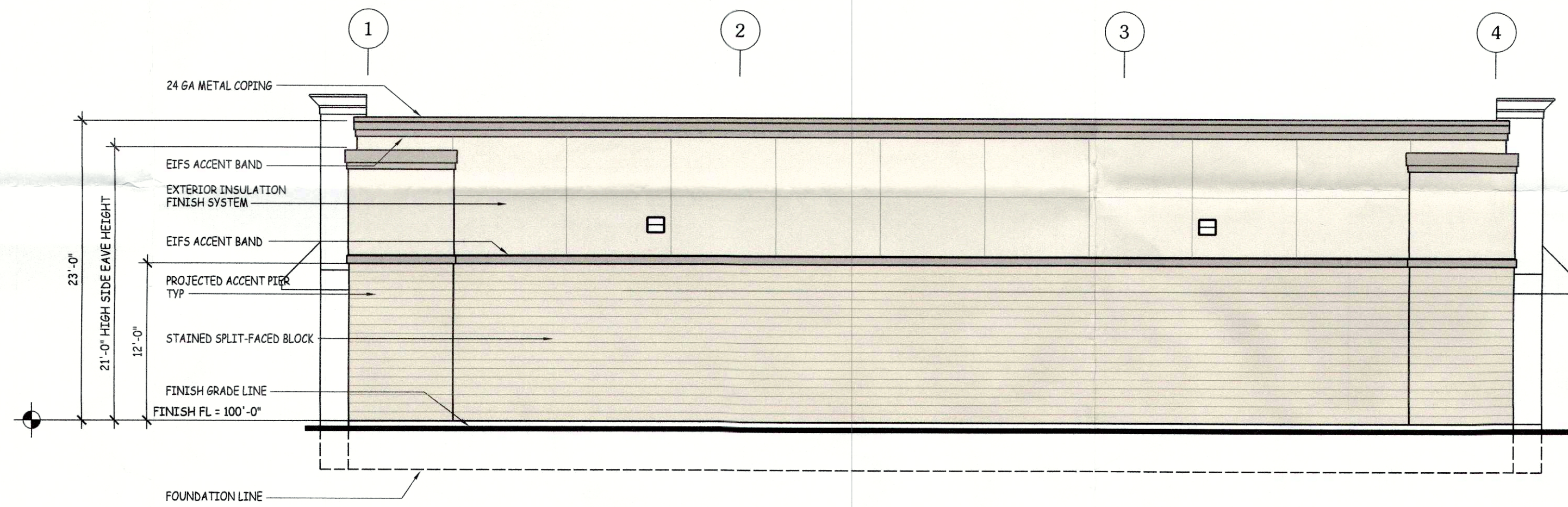


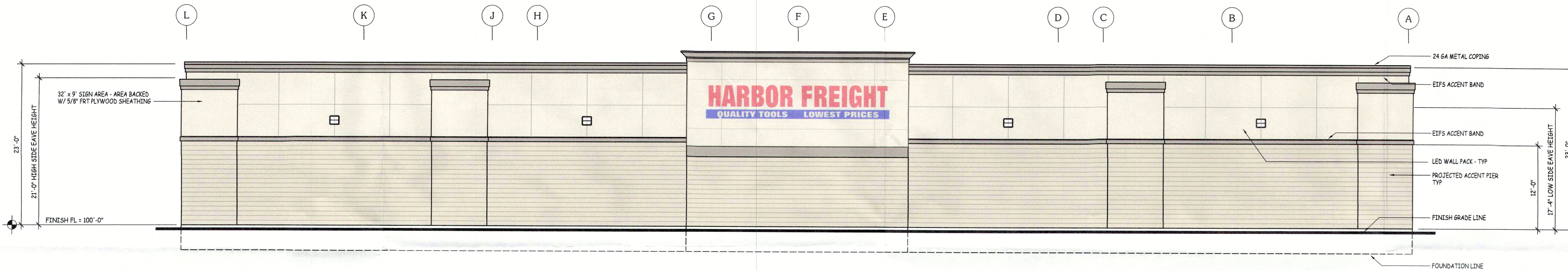
SCALE: 1/8" = 1'-0"



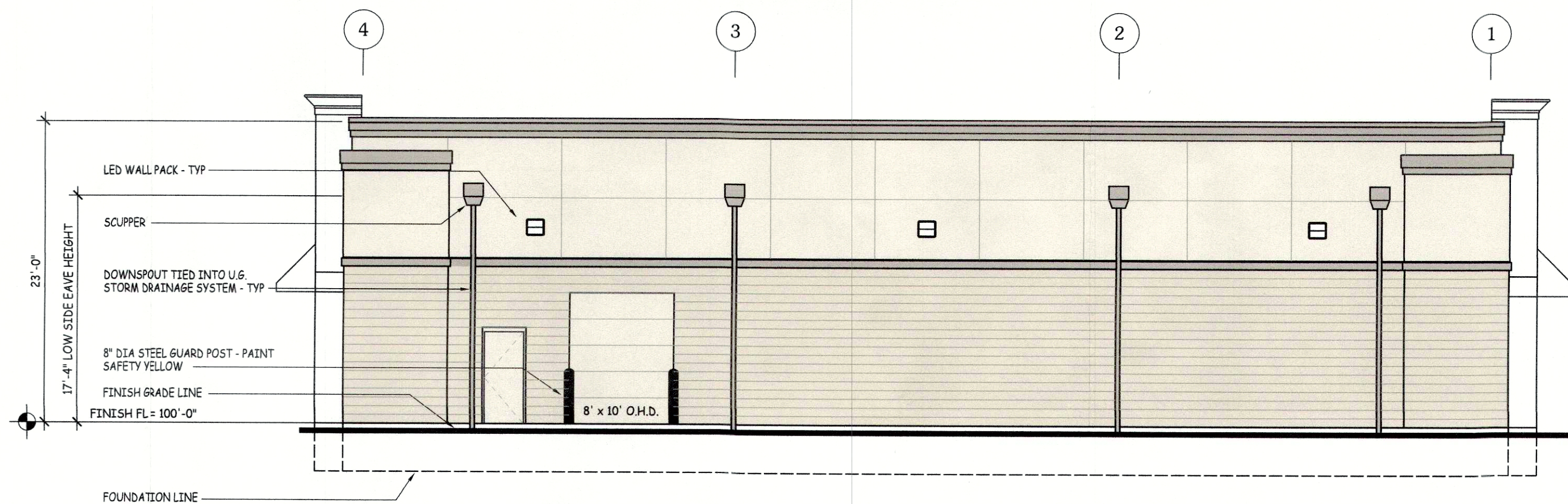
EAST EXTERIOR ELEVATION
SCALE: 1/8" = 1'-0"



SOUTH EXTERIOR ELEVATION
SCALE: 1/8" = 1'-0"



WEST EXTERIOR ELEVATION
SCALE: 1/8" = 1'-0"



NORTH EXTERIOR ELEVATION
SCALE: 1/8" = 1'-0"

ARCHITECT:
CE&M, Inc.
Architects & Engineers
127 West Berry Street, Suite 1001 - Fort Wayne, Indiana 46802
Telephone: 260/744 2781 - Fax: 260/456 8579
ceminc@cemincorp.com

GENERAL CONTRACTOR:
JGBowers, Inc.
GENERAL CONTRACTOR
1629 South Joaquin Drive
Marion, Indiana 46953
Phone: 765.677.1000

CERTIFICATION:

The concepts, designs, plans, details, and arrangements shown on this drawing are the sole property of CE&M, Inc. and were developed and presented for use on this project. None of the concepts, designs, plans, details, and arrangements, shall be reproduced or used by any person, firm, or corporation, without the expressed written consent of CE&M, Inc.

A NEW RETAIL PROJECT FOR:
HARBOR FREIGHT TOOLS
Standford Plaza Drive
Louisville, Kentucky

SHEET TITLE:
EXTERIOR ELEVATIONS

| NO. | REVISION | DATE | BY |
|-----|----------|------|----|
| | | | |
| | | | |
| | | | |
| | | | |
| | | | |
| | | | |
| | | | |
| | | | |
| | | | |
| | | | |

| | |
|---------------------------|----------------------|
| SCALE: 1/8" = 1'-0" | DRAWN BY: J.S.F. |
| ISSUE DATE: JUNE 04, 2018 | CHECKED BY: |
| BASE FILE: 58A011-8W | COMMISSION NO: 18258 |
| AUXILIARY FILES: | |

RECEIVED
JUN 18 2018
PLANNING &
DESIGN SERVICES

A1.1

18 DEV PLAN 1033