



VICINITY MAP (NOT TO SCALE)



KENTUCKY LAW REQUIRES TWO WORKING DAYS NOTICE PRIOR TO EARTHMOVING ACTIVITIES

JEFFERSONTOWN STANDARD NOTES:

- 1. THE DEVELOPMENT SHALL BE IN ACCORDANCE WITH THE APPROVED DEVELOPMENT PLAN... 2. ALL OFF-STREET PARKING AREAS SHALL BE PERMANENTLY AND CONTINUALLY MAINTAINED... 3. MITIGATION MEASURE FOR DUST CONTROL SHALL BE IN PLACE DURING CONSTRUCTION... 4. BEFORE ANY PERMIT (INCLUDING BUT NOT LIMITED TO BUILDING, PARKING LOT, CHANGE OF USE OR ALTERATION PERMIT) IS REQUESTED... 5. ANY AREA PROPOSED TO BE USED FOR OUTDOOR SALES, DISPLAY OR STORAGE IN ACCORDANCE WITH SECTION 4.4.8 SHALL BE ACCURATELY DELINEATED ON THE DEVELOPMENT PLAN.

MSD STANDARD NOTES:

- 1. CONSTRUCTION PLANS AND DOCUMENTS SHALL COMPLY WITH LOUISVILLE AND JEFFERSON COUNTY METROPOLITAN SEWER DISTRICT'S DESIGN MANUAL AND STANDARD SPECIFICATIONS AND OTHER LOCAL, STATE, AND FEDERAL ORDINANCES... 2. SANITARY SEWER SERVICE PROVIDED BY NEW PSC, SUBJECT TO FEES AND ANY APPLICABLE CHARGES... 3. AN EPSC PLAN SHALL BE DEVELOPED AND APPROVED IN ACCORDANCE WITH MSD DESIGN MANUAL AND STANDARD SPECIFICATIONS PRIOR TO CONSTRUCTION PLAN APPROVAL... 4. ALL RETAIL SHOPS MUST HAVE INDIVIDUAL CONNECTIONS PER MSD'S FATS, OIL AND GREASE POLICY... 5. THIS PROJECT IS SUBJECT TO MSA WATER QUALITY REQUIREMENTS ONCE INCREMENTAL AREA OF DISTURBANCE SUMS EQUAL TO OR GREATER THAN 1 ACRE OF DISTURBANCE...

NOTES:

ALL SIGNAGE SHALL COMPLY WITH JEFFERSONTOWN LDC CHAPTER 8 AND WILL OBTAIN THE REQUIRED PERMITS. CONCRETE WHEEL STOPS OR CURBING AT LEAST SIX (6) INCHES HIGH AND SIX (6) INCHES WIDE SHALL BE PROVIDED TO PREVENT VEHICLES FROM OVERHANGING ADJUTING SIDEWALKS... ALL CONSTRUCTION AND SALES TRAILERS MUST BE PERMITTED BY DEPARTMENT OF PUBLIC HEALTH AND WELLNESS... MOSQUITO CONTROL SHALL BE PERFORMED IN ACCORDANCE WITH CHAPTER 96 OF LOUISVILLE JEFFERSON COUNTY METRO ORDINANCES... ALL FOOD SERVICE ESTABLISHMENTS MUST BE IN ACCORDANCE WITH 902 KAR 45:005... MUST COMPLY WITH ALL CURRENT METRO SMOKING ORDINANCES... COMPATIBLE UTILITIES SHALL BE PLACED IN A COMMON TRENCH UNLESS OTHERWISE REQUIRED BY APPROPRIATE AGENCIES... OWNER MUST PROVIDE DOCUMENTATION OF CONNECT TO SANITARY SEWER, PSC, WITH A MINIMUM SIX INCH SANITARY SEWER... SANITARY SEWER SERVICE TO BE PROVIDED BY LATERAL EXTENSION AS APPROVED BY MSD... EACH PROPOSED BUILDING MUST CONNECT TO ITS OWN SANITARY SEWER PSC WITH A MINIMUM 6" SANITARY SEWER.

Legend

Legend table listing symbols for Water Line, Sanitary Sewer Main, Fence, Existing Contours, UGT, Storm Sewer, Proposed Contours, Overhead Utility Lines, Gas Lines, Swale, Iron Pin, Parking Bumper, Bollard, Soil Boring Location, Sanitary Sewer Cleanout, Gas Meter, Storm Sewer Curb Inlet, Storm Sewer MH/Open Lid, Light Pole or Traffic Light, Storm Sewer Manhole, Tree, Mag Nail, Sanitary Sewer Manhole, Sign, Water Meter, Water Valve, Utility Pole, TBR To Be Removed, TC Top of Curb, PV Pavement, ME Match Existing, 470.0 Grade point, Number of Parking Spaces, Drainage Arrow, Existing Concrete, Existing Pavement, New Concrete Walk/Pavement, New Asphalt.

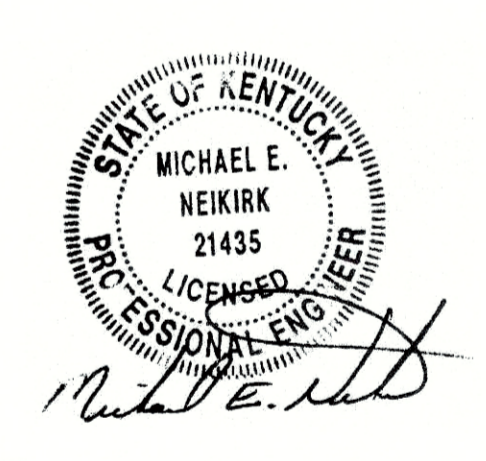
THESE DOCUMENTS ARE THE EXCLUSIVE PROPERTY OF NEIKIRK ENGINEERING, LLC AND THEREBY PROTECTED UNDER COPYRIGHT LAWS... REPRESENTED HERE ARE FOR THE SOLE USE OF THIS PROJECT AND SHALL NOT BE REPRODUCED OR ALTERED IN ANY MANNER WITHOUT THE WRITTEN CONSENT OF NEIKIRK ENGINEERING, LLC. Copyright 2019 Neikirk Engineering, LLC. All rights reserved.

REVISIONS

Table with columns: NO., DESCRIPTION, DATE. Row 1: DISTRICT DEV PLAN SUBMITTAL, 01/03/20.

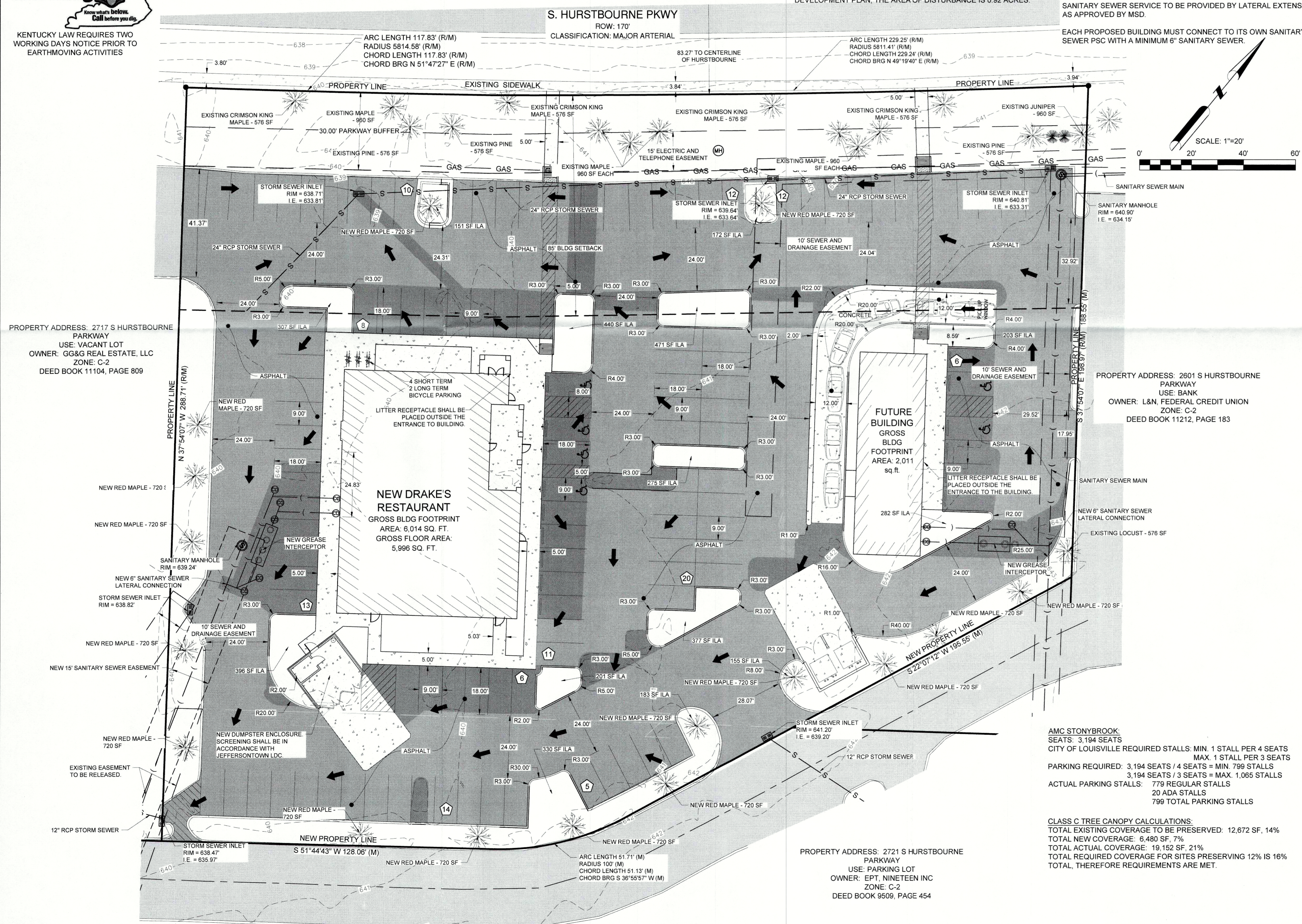
MICHAEL E. NEIKIRK PE Civil Engineer 306 North Market Street, Ste 101 Mt. Carmel, IL 62863 Phone: (618) 263-4100

SCALE: 1"=20' DRAWN BY: EH, RM DESIGNER: T.J.L, RM CHECKED BY: T.J.L ENGINEER: Michael E. Neikirk ARCHITECT: Design +, Inc. OWNER: Bluegrass Hospitality Group, LLC



JOB TITLE: DRAKE'S RESTAURANT 2651 S HURSTBOURNE PKWY LOUISVILLE, KY 40220

DISTRICT DEVELOPMENT PLAN DRAWING NUMBER: C2.1 REV #



WM#12015