

RECEIVED

DEC 27 2017

PLANNING &  
DESIGN SERVICES

ACM CLADDING

WOOD-LOOK  
CLADDING

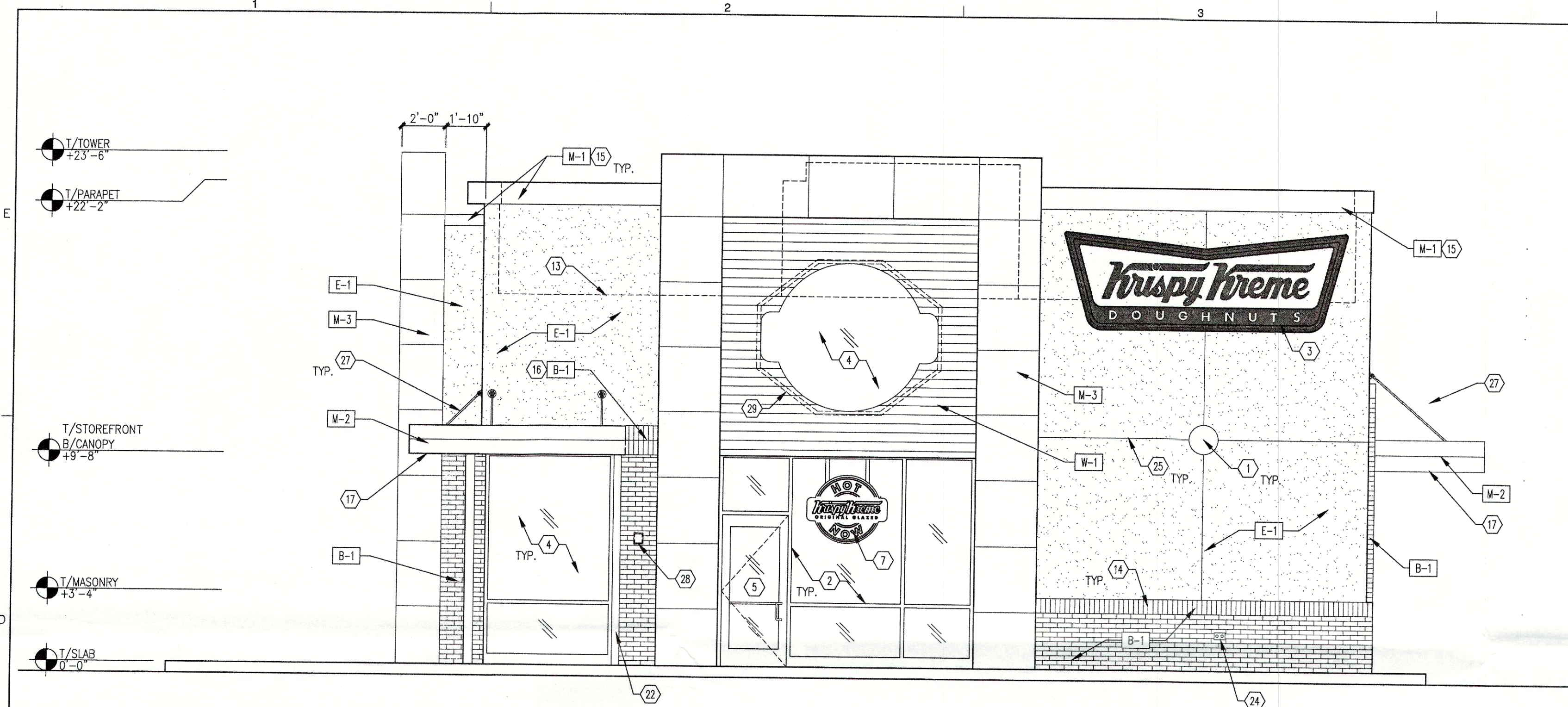
EIFS

STOREFRONT  
SYSTEM

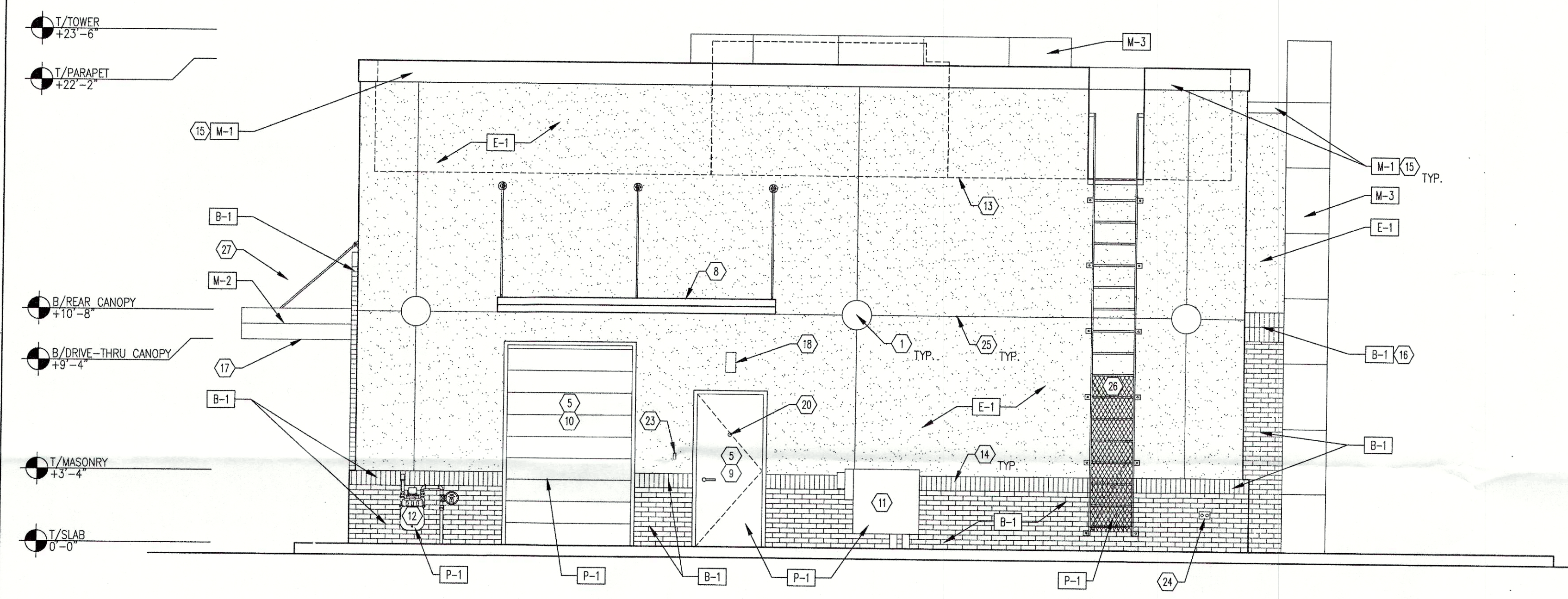
BRICK

**Krispy Kreme**  
DOUGHNUTS & COFFEE





1 EAST ELEVATION  
A6.0 SCALE: 1/4" = 1'-0"

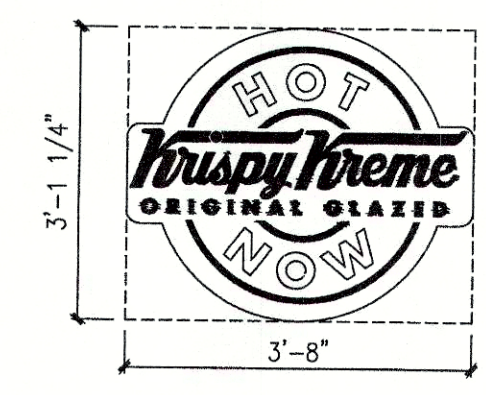
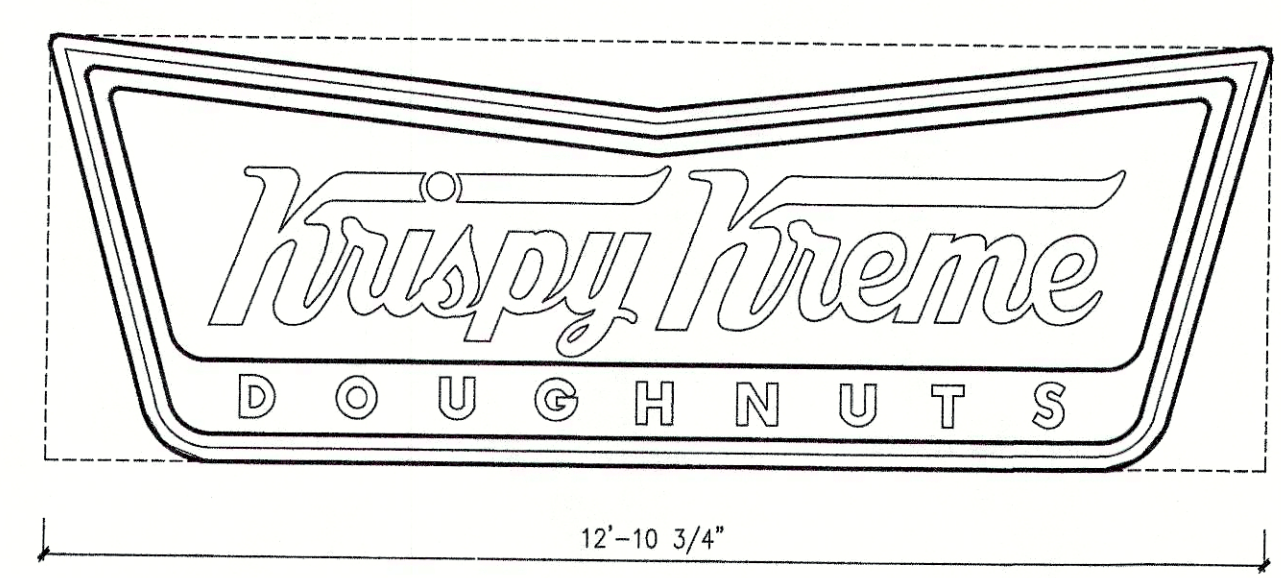
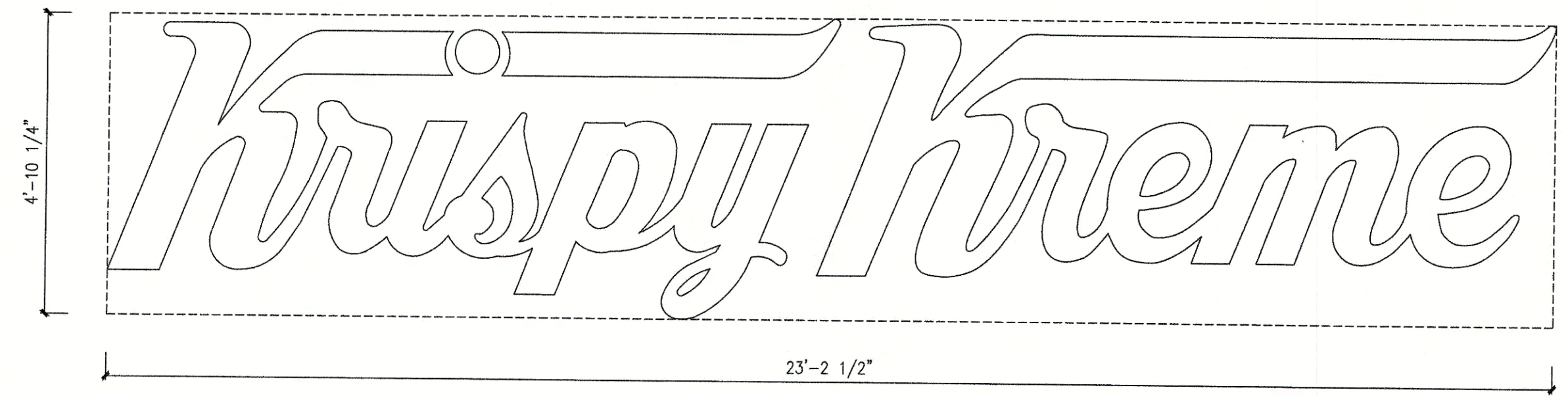


2 WEST ELEVATION  
A6.0 SCALE: 1/4" = 1'-0"

KRISPY KREME SIGN AREA: 114 SF

KRISPY KREME BOWTIE SIGN AREA: 58 SF

KRISPY KREME HOT DOUGHNUTS NOW  
INTERIOR WINDOW SIGN AREA: 12 SF



3 BUILDING SIGNAGE  
A6.0 SCALE: N.T.S.

GENERAL NOTES

- FOR REFLECTED CEILING PLAN SEE DWGS A2.0 & A3.0.
- FOR DOOR & WINDOW SCHEDULES SEE DWG A18.0.
- FOR EQUIPMENT SEE DWG EQ1.0.
- ALL SERVICE/ PRODUCTION AREAS TO RECEIVE STAINLESS STEEL CORNER GUARDS AT ALL OUTSIDE CORNERS.
- NEW WALL COVERING GRAPHICS BY OWNER'S VENDOR. G.C. SHALL PREPARE WALLS AS REQUIRED TO A SMOOTH SURFACE AND PRIME PER MANUFACTURER'S SPEC'S.

ELEVATION KEYED NOTES

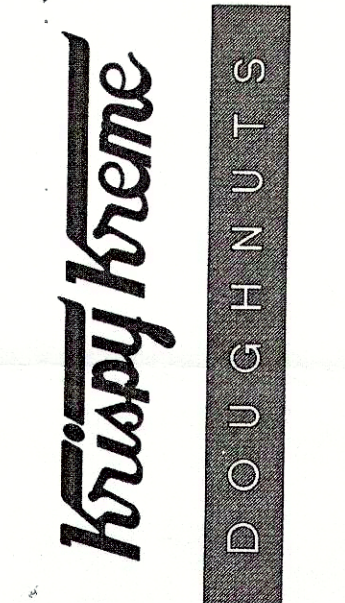
- DECORATIVE EXTERIOR LIGHTS - MOUNT CENTER AT 14'-0" A.F.F. - REFER TO ELECTRICAL DWGS.
- YKK AP. YBSN, DARK BRONZE ANODIZED PLUS STOREFRONT WINDOW SYSTEM.
- EXTERIOR WALL SIGNAGE TO BE PROVIDED BY OWNER'S SIGN VENDOR. EC TO COORDINATE WITH SIGN VENDOR AND PROVIDE ELECTRICAL SUPPLY AND BLOCKING AT SIGN LOCATIONS AS REQUIRED. SIGNS MUST NOT BE 2'-0" ABOVE ROOF LINE. SEE ELECT DWGS FOR J-BOX LOCATION.
- SAFETY GLAZING - TINTING AND LOW E AS REQUIRED TO MEET ENERGY CODE REQUIREMENTS AS INDICATED IN CODE SUMMARY.
- EXTERIOR DOOR PER SCHEDULE.
- DRIVE THRU WINDOW PROVIDED AND INSTALLED BY G.C.
- INTERIOR NEON SIGNAGE BY NATIONAL VENDOR - UNDER SEPARATE CONTRACT AND PERMIT.
- CANOPY BY NATIONAL VENDOR - UNDER SEPARATE CONTRACT AND PERMIT. G.C. TO PROVIDE BLOCKING AS REQUIRED.
- HOLLOW METAL DOOR & FRAME PAINT [P-1].
- METAL ROLL UP DOOR & FRAME - PREFINISHED.
- ELECTRICAL SERVICE EQUIPMENT - E.I.F.S. TO STOP PRIOR TO ELECTRICAL EQUIPMENT. COORDINATE EXACT DIMENSIONS WITH MANUFACTURER. GC SHALL PROVIDE CONTINUOUS WEATHER SEALANT ALL AROUND EQUIPMENT AND AT PENETRATIONS INTO BUILDING - PAINT [P-1].
- GAS METER - SEE PLUMBING DWGS - PROVIDE WEATHER SEAL AT PENETRATIONS INTO BUILDING - PAINT [P-1].
- LINE OF ROOF BEYOND.
- SOLDIER COURSE.
- METAL SNAP ON COMPRESSION EDGE PROVIDED BY ROOFING CONTRACTOR UNDER SEPARATE CONTRACT. GC RESPONSIBLE FOR COORDINATION OF CONSTRUCTION SCHEDULE. SEE SHEET A14.0 FOR DETAILS.
- DOUBLE SOLDIER COURSE.
- BOTTOM SIDE OF EIFS CANOPIES SHALL BE [E-1].
- EMERGENCY LIGHT FIXTURE MOUNT BOTTOM OF FIXTURE AT 8'-0" A.F.F.
- COW'S TONGUE. GC TO PROVIDE BROWN EXTERIOR GRADE SIGN ABOVE COW'S TONGUE, WITH WHITE ROUTED LETTERS STATING, "IF WATER IS COMING FROM THIS FIXTURE PLEASE NOTIFY MANAGEMENT" - SEE PLUMBING DRAWINGS FOR ADD'L INFO.
- 180° VIEWER.
- EXPANSION JOINT IN BRICK VENEER WALL.
- CANOPY DOWNSPOUT BY G.C.-ALUMINUM TO MATCH STOREFRONT. SEE CIVIL FOR ADD'L INFO.
- DOORBELL.
- FROST PROOF HOSE BIBB.
- 2" WIDE E.I.F.S. HORIZONTAL REVEAL ALIGN REVEAL WITH THE TOP OF CANOPY, TYP.
- EXTERIOR ROOF LADDER - PAINT [P-1].
- EXTERIOR CANOPY TIE RODS - SEE WALL SECTIONS, ROOF PLAN AND STRUCTURAL DWGS.
- KNOX BOX - VERIFY INSTALLATION REQUIREMENTS PER LOCAL FIRE DISTRICT IF NEEDED.
- STOREFRONT BEHIND WOOD PLANKS - SEE WALL SECTIONS FOR MORE INFORMATION.

LEGEND

EXTERIOR FINISHES	
E-1	MANUFACTURER: DRYVIT TYPE: OUTSULATION PLUS MD COLOR: 106 PEARL ASH EIFS FINISH: QUARTZ PUTZ CONTACT: ROBERT DAZEL, AIA TELEPHONE: 734-276-0404
B-1	TYPE: TRAD. BRICK W/ 3/8" JOINT MANUFACTURER: PINE HALL BRICK CO. COLOR: SPECTRA SCARLET W/C ARGOS, ARGOS KHAKI GROUT: SPEKTRA SCARLET W/C ARGOS, ARGOS KHAKI SUPPLIER: PINE HALL BRICK CONTACT: KURT THOMAS TELEPHONE: 336-345-4747
METAL	
M-1	TYPE: 1-PIECE SNAP-ON COMPRESSION EDGING MANUFACTURER: EXCEPTIONAL METALS COLOR: MEDIUM BRONZE
M-2	TYPE: 1-PIECE SNAP-ON COMPRESSION EDGING MANUFACTURER: EXCEPTIONAL METALS COLOR: REGAL RED SR.38/TE.87
M-3	TYPE: ALUMINUM COMPOSITE MATERIAL MANUFACTURER: ALUCOBOND COLOR: TBD
PAINT	
P-1	TYPE: PAINT MANUFACTURER: BENJAMIN MOORE COLOR: 2092-20 SIENNA LOCATION: METAL
WOOD	
W-1	TYPE: WOOD MANUFACTURER: TBD COLOR: TBD

GEORGE SARFATTY, AIA  
ARCHITECT  
807 P.O. BOX 1100  
MIDDLETOWN, KY 40223  
Copyright © 2017

KRISPY KREME DOUGHNUTS  
13319 SHELBYVILLE ROAD  
MIDDLETOWN, KY 40223



SEAL:

DATE: 11/03/2017

PROJECT NO.: 17-053

CHECKED BY: JML

DRAWN BY: DN, DV

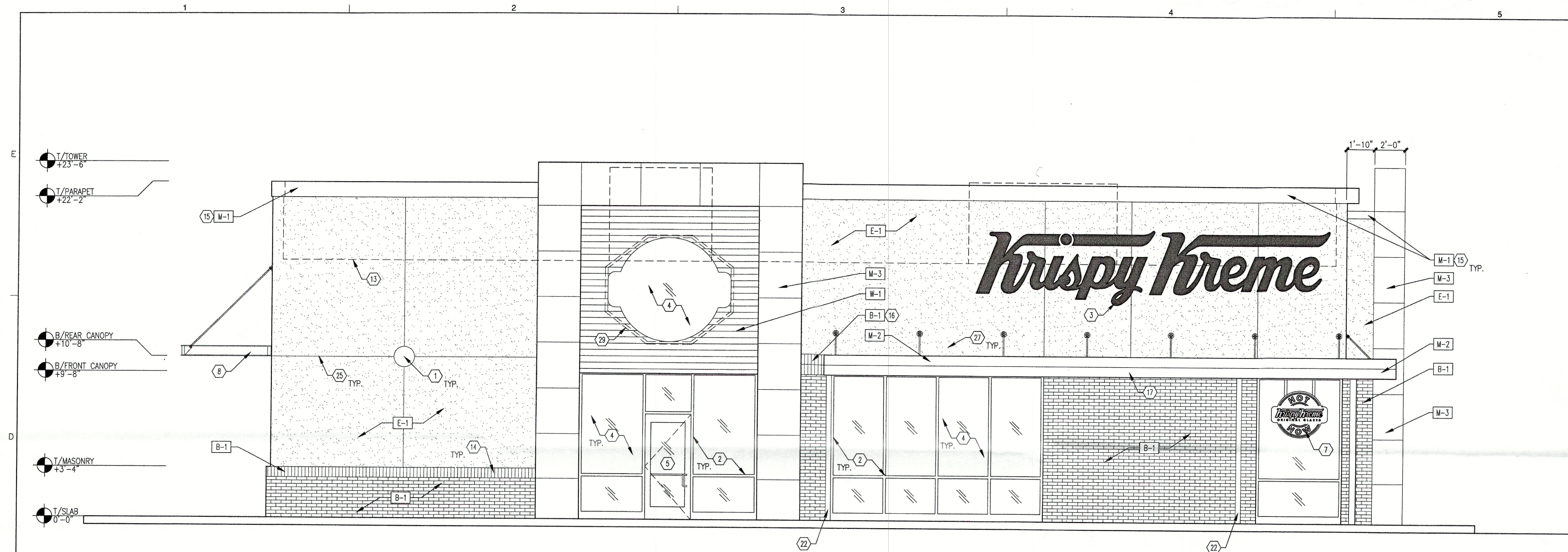
SHEET TITLE:

EXTERIOR ELEVATIONS

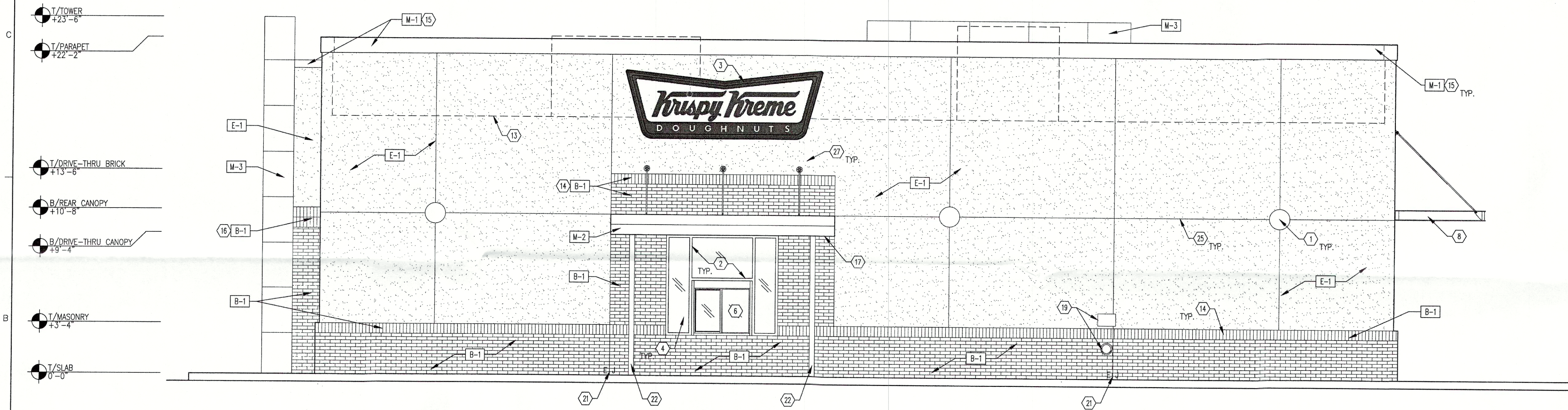
SHEET NO.:

A6.0





1 SOUTH ELEVATION  
A6.1 SCALE: 1/4" = 1'-0"



2 NORTH ELEVATION  
A6.1 SCALE: 1/4" = 1'-0"

GENERAL NOTES

- FOR REFLECTED CEILING PLAN SEE DWGS A2.0 & A3.0.
- FOR DOOR & WINDOW SCHEDULE SEE DWG A18.0.
- FOR EQUIPMENT SEE DWG E01.0.
- ALL SERVICE/ PRODUCTION AREAS TO RECEIVE STAINLESS STEEL CORNER GUARDS AT ALL OUTSIDE CORNERS.
- NEW WALL COVERING GRAPHICS BY OWNER'S VENDOR. G.C. SHALL PREPARE WALLS AS REQUIRED TO A SMOOTH SURFACE AND PRIME PER MANUFACTURER'S SPEC'S.

ELEVATION KEYED NOTES

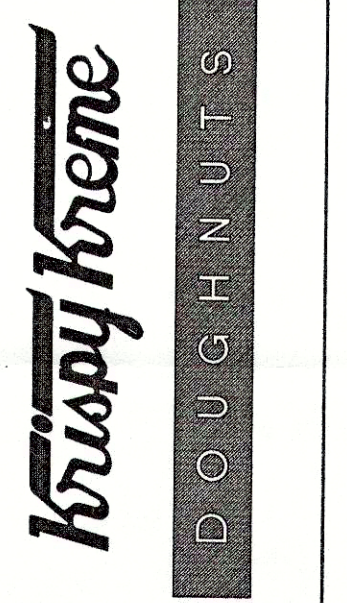
- DECORATIVE EXTERIOR LIGHTS - MOUNT CENTER AT 14'-0" A.F.F. - REFER TO ELECTRICAL DWGS.
- YKK AP, YBSN, DARK BRONZE ANODIZED PLUS STOREFRONT WINDOW SYSTEM.
- EXTERIOR WALL SIGNAGE TO BE PROVIDED BY OWNER'S SIGN VENDOR. EC TO COORDINATE WITH SIGN VENDOR AND PROVIDE ELECTRICAL SUPPLY AND BLOCKING AT SIGN LOCATIONS AS REQUIRED. SIGNS MUST NOT BE 2'-0" ABOVE ROOF LINE. SEE ELEC DWGS FOR J-BOX LOCATION.
- SAFETY GLAZING - TINTING AND LOW E AS REQUIRED TO MEET ENERGY CODE REQUIREMENTS AS INDICATED IN CODE SUMMARY.
- EXTERIOR DOOR PER SCHEDULE.
- DRIVE THRU WINDOW PROVIDED AND INSTALLED BY G.C.
- INTERIOR NEON SIGNAGE BY NATIONAL VENDOR - UNDER SEPARATE CONTRACT AND PERMIT.
- CANOPY BY NATIONAL VENDOR - UNDER SEPARATE CONTRACT AND PERMIT. G.C. TO PROVIDE BLOCKING AS REQUIRED.
- HOLLOW METAL DOOR & FRAME PAINT [P-1].
- METAL ROLL UP DOOR & FRAME - PREFINISHED.
- ELECTRICAL SERVICE EQUIPMENT - E.I.F.S. TO STOP PRIOR TO ELECTRICAL EQUIPMENT. COORDINATE EXACT DIMENSIONS WITH MANUFACTURER. GC SHALL PROVIDE CONTINUOUS WEATHER SEALANT ALL AROUND EQUIPMENT AND AT PENETRATIONS INTO BUILDING - PAINT [P-1].
- GAS METER - SEE PLUMBING DWGS - PROVIDE WEATHER SEAL AT PENETRATIONS INTO BUILDING - PAINT [P-1].
- LINE OF ROOF BEYOND.
- SOLDIER COURSE.
- METAL SNAP ON COMPRESSION EDGE PROVIDED BY ROOFING CONTRACTOR UNDER SEPARATE CONTRACT. GC RESPONSIBLE FOR COORDINATION OF CONSTRUCTION SCHEDULE. SEE SHEET A14.0 FOR DETAILS.
- DOUBLE SOLDIER COURSE.
- BOTTOM SIDE OF EIFS CANOPIES SHALL BE [E-1].
- EMERGENCY LIGHT FIXTURE MOUNT BOTTOM OF FIXTURE AT 8'-0" A.F.F.
- COW'S TONGUE. GC TO PROVIDE BROWN EXTERIOR GRADE SIGN ABOVE COW'S TONGUE, WITH WHITE ROUTED LETTERS STATING, "IF WATER IS COMING FROM THIS FIXTURE PLEASE NOTIFY MANAGEMENT" - SEE PLUMBING DRAWINGS FOR ADD'L INFO.
- 180° VIEWER.
- EXPANSION JOINT IN BRICK VENEER WALL.
- CANOPY DOWNSPOUT BY G.C.-ALUMINUM TO MATCH STOREFRONT. SEE CIVIL FOR ADD'L INFO.
- DOORBELL.
- FROST PROOF HOSE BIBB.
- 2" WIDE E.I.F.S. HORIZONTAL REVEAL ALIGN REVEAL WITH THE TOP OF CANOPY, TYP.
- EXTERIOR ROOF LADDER - PAINT [P-1].
- EXTERIOR CANOPY TIE RODS - SEE WALL SECTIONS, ROOF PLAN AND STRUCTURAL DWGS.
- KNOX BOX - VERIFY INSTALLATION REQUIREMENTS PER LOCAL FIRE DISTRICT IF NEEDED.
- STOREFRONT BEHIND WOOD PLANKS - SEE WALL SECTIONS FOR MORE INFORMATION.

LEGEND

EXTERIOR FINISHES	
E-1	MANUFACTURER: DRYVIT TYPE: OUTSULATION PLUS MD COLOR: 105 PEARL ASH EIFS FINISH: QUARTZ PUTZ CONTACT: ROBERT DAZEL, AIA TELEPHONE: 734-276-0404
B-1	TYPE: TRAD. BRICK W/ 3/8" JOINT MANUFACTURER: PINE HALL BRICK CO. COLOR: SPEKTRA SCARLET W/C GROUT: ARGOS, ARGOS KHAKI SUPPLIER: PINE HALL BRICK CONTACT: KURT THOMAS TELEPHONE: 336-345-4747
METAL	
M-1	TYPE: 1-PIECE SNAP-ON COMPRESSION EDGING MANUFACTURER: EXCEPTIONAL METALS COLOR: MEDIUM BRONZE
M-2	TYPE: 1-PIECE SNAP-ON COMPRESSION EDGING MANUFACTURER: EXCEPTIONAL METALS COLOR: REGAL RED SR.38/TE.87
M-3	TYPE: ALUMINUM COMPOSITE MATERIAL MANUFACTURER: ALUCOBOND COLOR: TBD
PAINT	
P-1	TYPE: PAINT MANUFACTURER: BENJAMIN MOORE COLOR: 2092-20 SIENNA LOCATION: METAL
WOOD	
W-1	TYPE: WOOD MANUFACTURER: TBD COLOR: TBD

GEORGE SARFATY, AIA  
200 South Street, Suite 415, Knoxville, TN 37901  
615.252.1100  
www.sarfaty.com

KRISPY KREME DOUGHNUTS  
13319 SHELBYVILLE ROAD  
MIDDLETOWN, KY 40223



RECEIVED  
NOV 07 2017  
PLANNING & DESIGN SERVICES

SEAL:  
DATE: 11/03/2017  
PROJECT NO.: 17-053  
CHECKED BY: JML  
DRAWN BY: DN, DV  
SHEET TITLE:  
EXTERIOR ELEVATIONS  
SHEET NO.:

A6.1