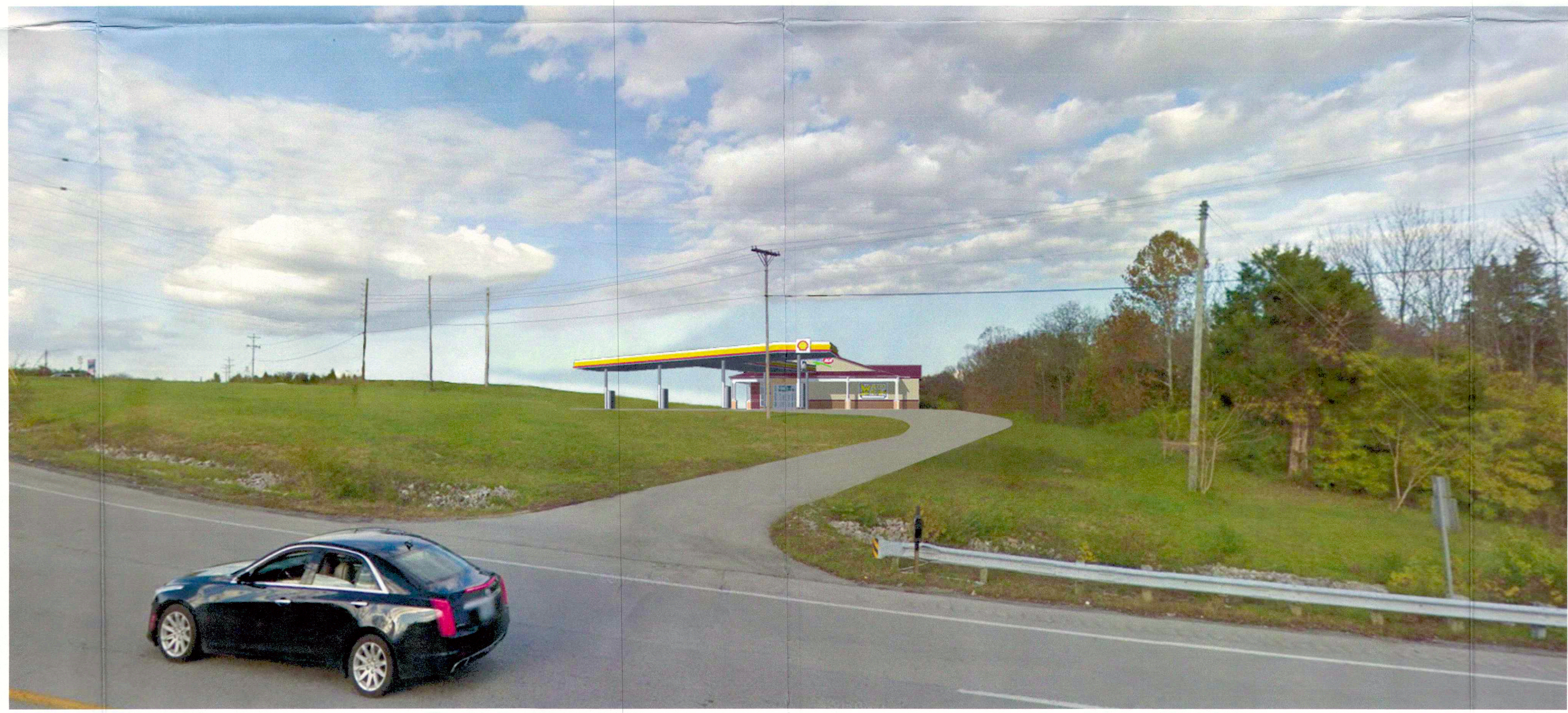


RECEIVED
JAN 17 2018
PLANNING &
DESIGN SERVICES

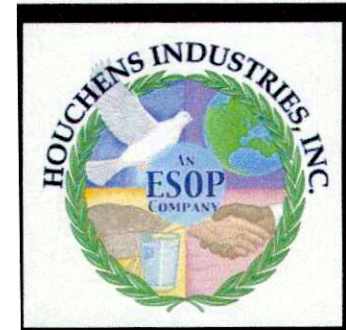


BEFORE



AFTER

17 ZONE 1039



Crossroads IGA
6101 Fegenbush Lane
Louisville, KY



17 ZONE 1039

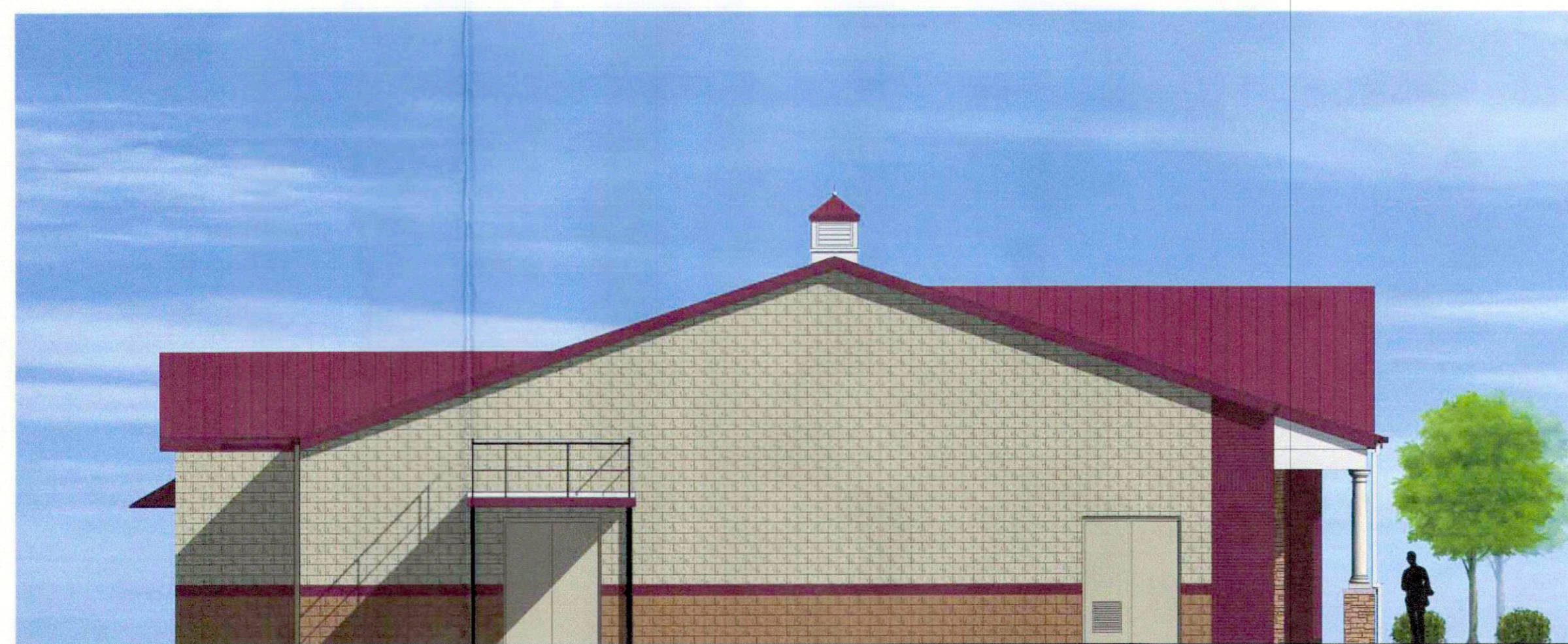


1 EXTERIOR BUILDING COLOR ELEVATION - GROCERY ENTRANCE
1/8" = 1'-0"

RECEIVED
JAN 17 2018
PLANNING &
DESIGN SERVICES



2 EXTERIOR BUILDING COLOR ELEVATION - DRIVE-THRU
1/8" = 1'-0"

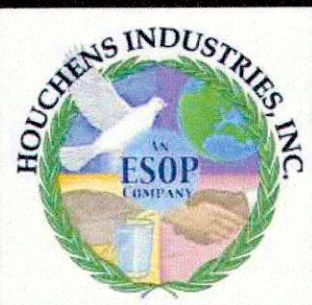


4 EXTERIOR BUILDING COLOR ELEVATION - SERVICE / LOADING
1/8" = 1'-0"



3 EXTERIOR BUILDING COLOR ELEVATION - GAS ENTRANCE
1/8" = 1'-0"

17 ZONE 1039



Crossroads IGA
6101 Fegenbush Lane
Louisville, KY

