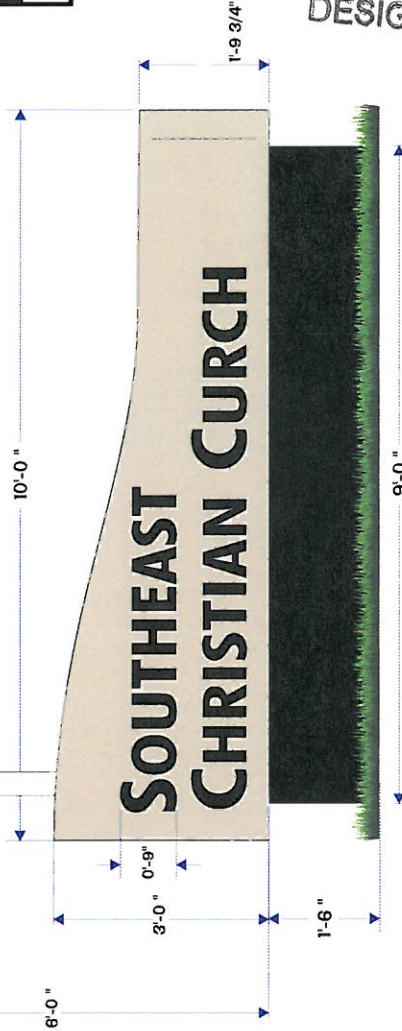
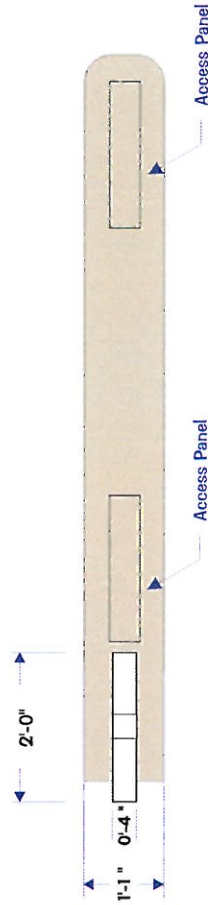


ISI RUEFF SIGNS

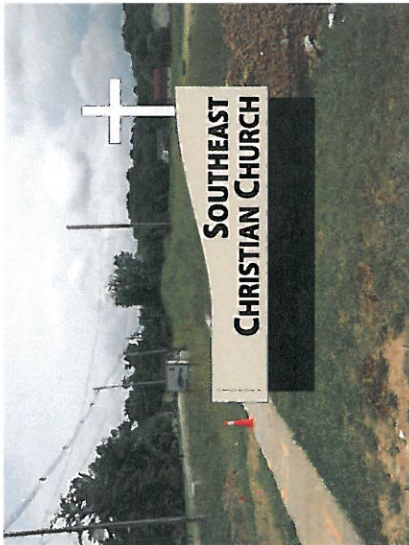
1530 East Washington St.
Louisville, Kentucky 40206
502-582-1714 - Ph
502-584-6427 - Fax

CUSTOMER	Southwest Christian Church
LOCATION	TBD
SALESMAN	Bob Rueff
DATE	8-25-14
SCALE	1/2" = 1'
FILE NAME	Southwest Christian Church/Monument

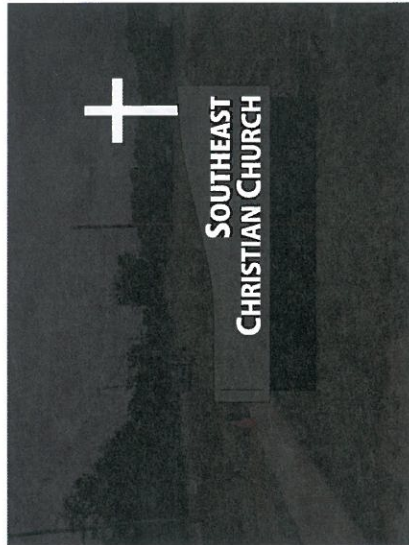
D/F Internally Illuminated Monument Sign
with Aluminum or Steel Internal Structure.
Colors as per Customer Specs.



Routed Transblack Acrylic Letters Internally lit w/LED.
Appears Black In Daylight, Glows White at Night.



As Appears in Daylight



As Appears at Night

Underwriters Laboratories Inc. LISTED
ELECTRIC SIGN
COMPLIES TO UL 48

THIS IS A SKETCH, NOT A BLUEPRINT.
ANY PHOTO OVERLAYS OR IMAGES
ARE MERELY AN ATTEMPT TO SHOW
TO HOW THEY MAY APPEAR INSTALLED.
FINAL SIZES ARE AS LISTED ON THE
MECHANICAL DRAWING.

ALBERTA 2006 I.E. (20 VOLS.) ALSO OBSERVE INDEX

THE CONTENTS OF THIS DRAWING AND ALL
DESIGN FEES SHALL BE THE PROPERTY OF
ISI RUEFF SIGNS. NO PART OF THIS
DRAWING, INCLUDING BUT NOT LIMITED TO
REPRODUCTION, CHANGE, OR EXHIBIT TO
ANYONE ELSE WITHOUT THE WRITTEN
PERMISSION FROM THE OWNER OF ISI RUEFF
SIGNS, INC. ALL SUCH ACTIONS ARE
PROHIBITED BY LAW.

© ISI RUEFF SIGNS, INC. ALL RIGHTS RESERVED

JUL 27 2015
PLANNING &
DESIGN SERVICES

Drawn by G. Plimpton

VED