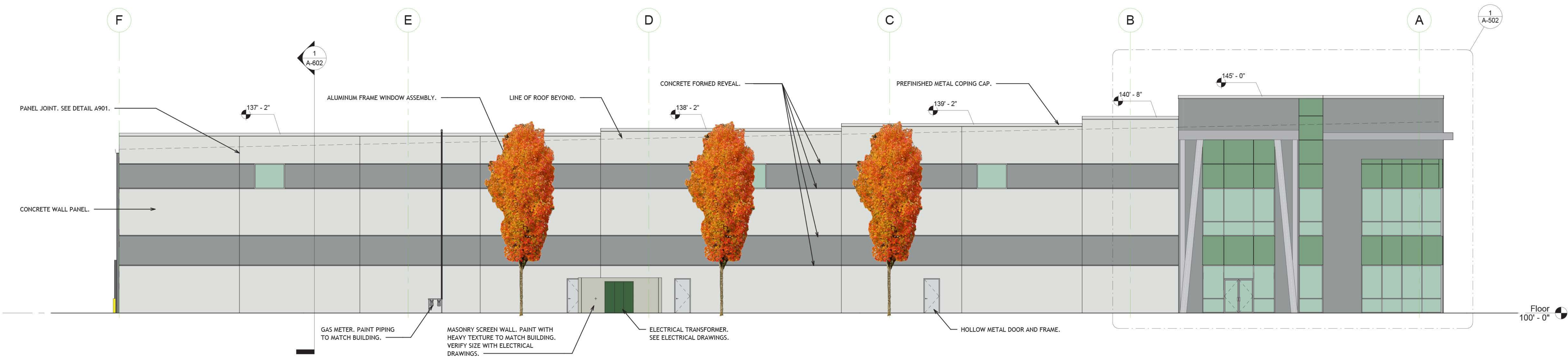


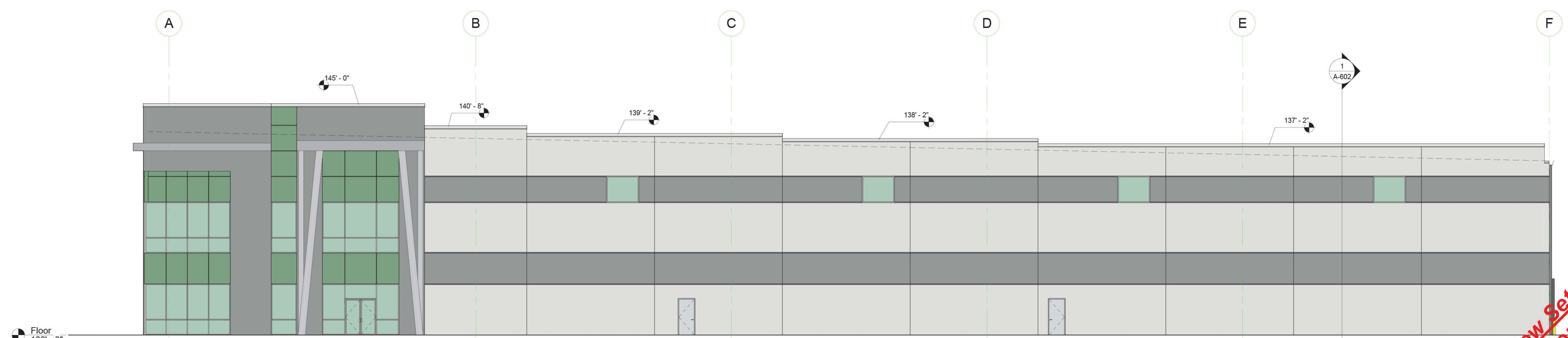
1 West Elevation
1" = 30'-0"



2 East Elevation
1" = 30'-0"



3 North Elevation
1" = 10'-0"



4 South Elevation
1" = 10'-0"

Notice
The Architect/Engineer does not define the scope of individual trades, subcontractors, material suppliers, or vendors. Any sheet numbering system used which identifies disciplines is solely for the Architect/Engineer's convenience, and is not intended to define a subcontractor's scope of work. Information regarding individual trades, subcontractors, material suppliers, and vendors may be detailed, described and indicated at different locations throughout these documents. No consideration will be given to requests for change orders for failure to obtain and review the complete set of drawings and specifications when preparing bids, prices, and quotations.

**Review Set Only
Not for Construction**