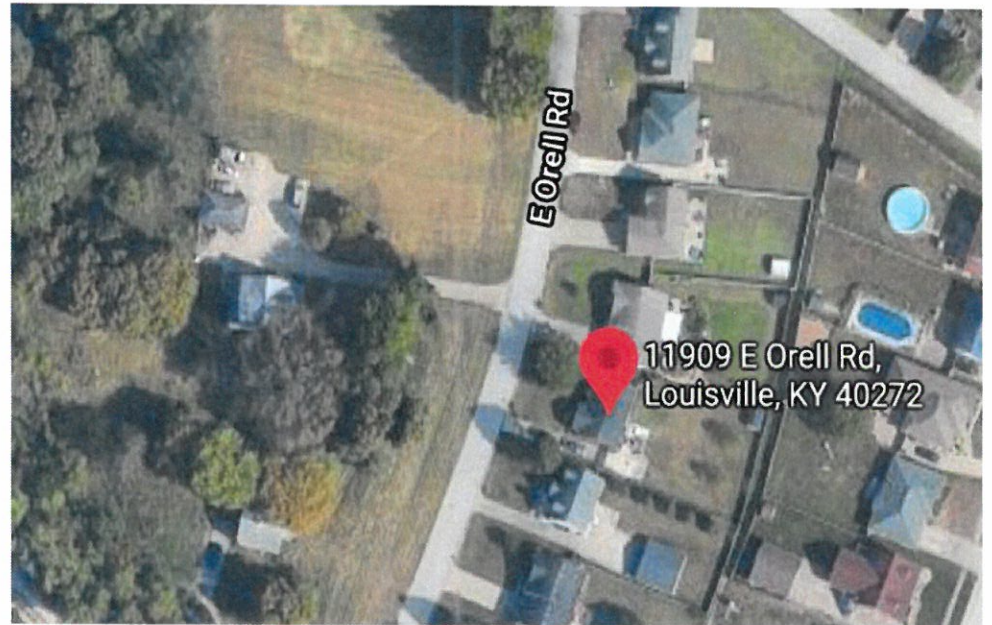


Andrew Fischer

11909 E. Orell Rd
Louisville, KY 40272



Agenda

I am here to vigorously oppose the rezoning of residential property and proposed RaceTrac retail gas station facility.

Safety Hazards

Fires
Explosions
Gas Leaks

Health Risks

Environmental
Adverse Health Effects
Benzene

Increased Noise

Rise in ambient noise
Removal of trees

Safety Hazards

RaceTrac Proposed Gas Station

- *Massive Fueling Station*
- *Estimated over **100,000 gallons** of fuel*
- *Capable of fueling large Semi-Trucks*

Fires & Explosions

According to the National Fire Protection Association, every year more than **5000 gas station fires** are reported in the US.



Video shows massive gas station explosion

An explosive gas station fire in New Mexico was caught on camera by drivers as fire crews worked to contain the blaze. Source: CNN

Underground gas tanks explode in Ashland

The Herald-Dispatch April 16, 2019



Safety Hazards

RaceTrac Proposed Gas Station

- *Massive Fueling Station*
 - *Estimated over 100,000 gallons of fuel*
 - *Capable of fueling large Semi-Trucks*
-

Fires & Explosions

“Static electricity can ignite a fire or cause an explosion” – Environmental Health and Safety Office at Emory University

“The most prevalent risks associated with gas station environment hazards are fires and explosions. Gas station fires most frequently result from sparks that lead to fuel explosions and static electricity that ignites fuel vapors.” - *MTI Business Solutions*



Safety Hazards

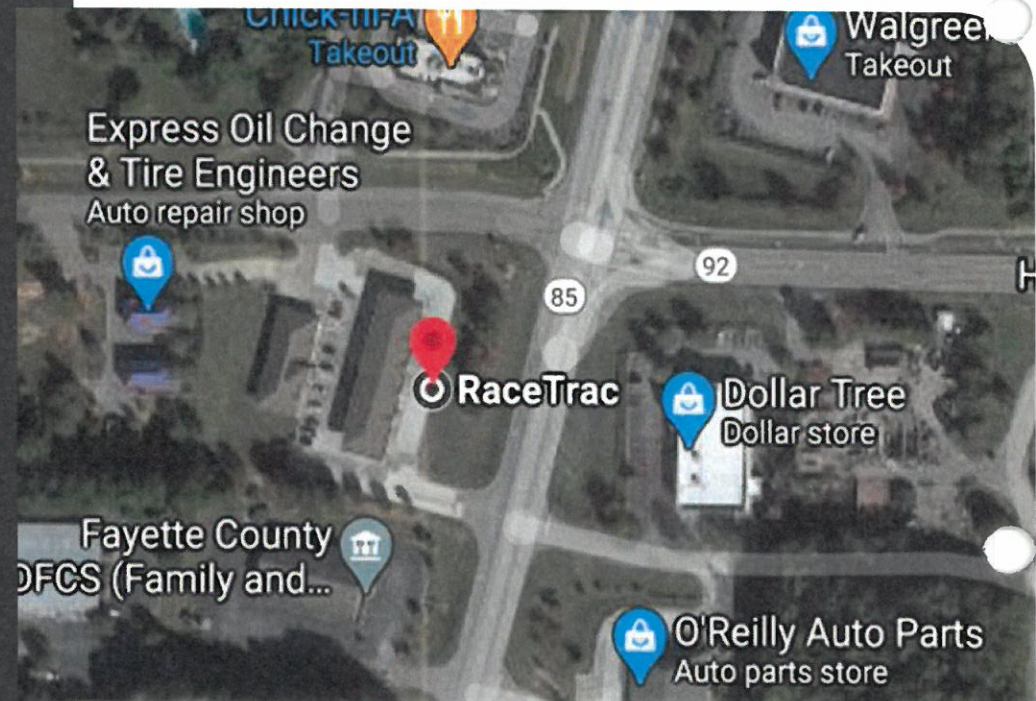
RaceTrac

Gas Leak

“Fayette County Fire and Emergency Services subsequently closed the roadways and evacuated approximately 100 people from several area businesses”

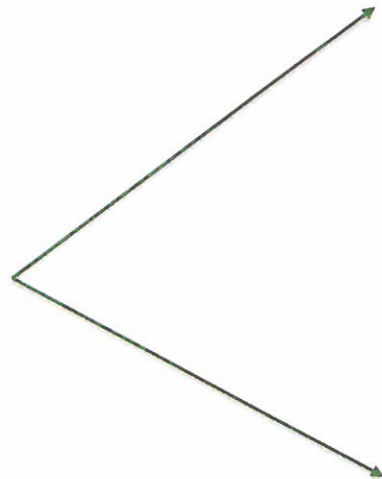
– *The Citizen (Fayetteville, GA)*

“A mid-morning natural **gas leak** April 7 at the new **RaceTrac** gas station...”



Safety Hazards

RaceTrac Gas Leaks



Fuel spilled at Southside gas station JACKSONVILLE, Fla.

The Jacksonville Fire-Rescue hazardous materials team was cleaning up a gasoline leak on the Southside around midday Monday.

About **40-50 gallons** were spilled at a **RaceTrac** gas station on University Boulevard near Philips Highway.

Crews responding to reported diesel leak at RaceTrac on Siegen

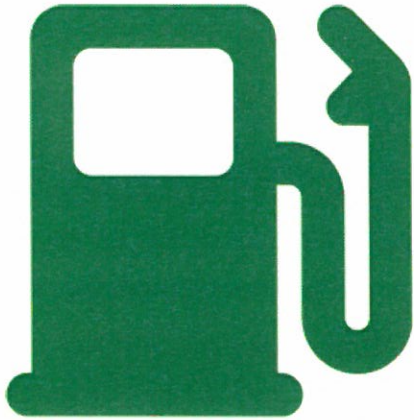


A gas leak was reported at the RaceTrac gas station on Siegen Lane Wednesday morning. (Source: WAFB)

By **Mykal Vincent** | August 14, 2019 at 6:33 AM CDT - Updated August 14 at 6:51 AM

BATON ROUGE, La. (WAFB) - Emergency crews responded to a reported diesel leak at a gas station Wednesday morning.

Health Risks



Vent pipes at gas stations released 10 times the amount of benzene, *a known carcinogen*, than previously assumed in modeling used to determine how far gas stations should be placed away from sensitive sites like homes and schools.

The closest house among the adjacent residences to the east along Orell Road is over 250 feet from the proposed diesel canopy.

Health Risks

Gasoline contains approximately 150 different chemicals

Exposure to Gasoline

Repeated high exposure to gasoline, whether in liquid or vapor form, can cause lung, brain and kidney damage, according to the NIH's National Library of Medicine.

Benzene

Benzene is the gasoline constituent most harmful to human health. Adverse health effects of benzene include nausea, cancer, anemia, increased susceptibility to infections, and low birth weight.

Engine Emissions

"Idling engines, particularly those in large diesel trucks, emit a large quantity of particulates into the local atmosphere. These particulates can pose a significant health risk for those living near convenience store/truck stops."

“

*The cancer risk estimate of 8.3 per 10,000 for populations living within 500 feet of an oil and gas facility exceeded the U.S. EPA's 1 in 10,000 upper threshold, according to study published recently in the journal *Environmental Science & Technology*.*

Science Daily

Health Risks to Children



Childhood Leukemia

*"A 2003-2004 study documented a significant relationship between **childhood leukemia** and living near a **gas station**"*



“

"Of particular concern are children who, for example, live nearby, play nearby, or attend nearby schools, because children are more vulnerable to hydrocarbon exposure."

www.ceds.com



Health Risks to Children

Despite all the modern health and safety guidelines they must follow, **gas stations** can still pose **significant hazards** to neighbors, especially children.”

- U.S. EPA / National Institutes of Health

Increased Noise

1.2 EXISTING NOISE ENVIRONMENT

The noise environment in the vicinity of the proposed RaceTrac facility and the closest residences is generally comprised of highway traffic noise (Dixie Highway, and I-265), and localized noise sources, including local traffic, residential noise generators (e.g. A/C compressors, conversations and lawn mowers), and a railway corridor just south of the proposed site.

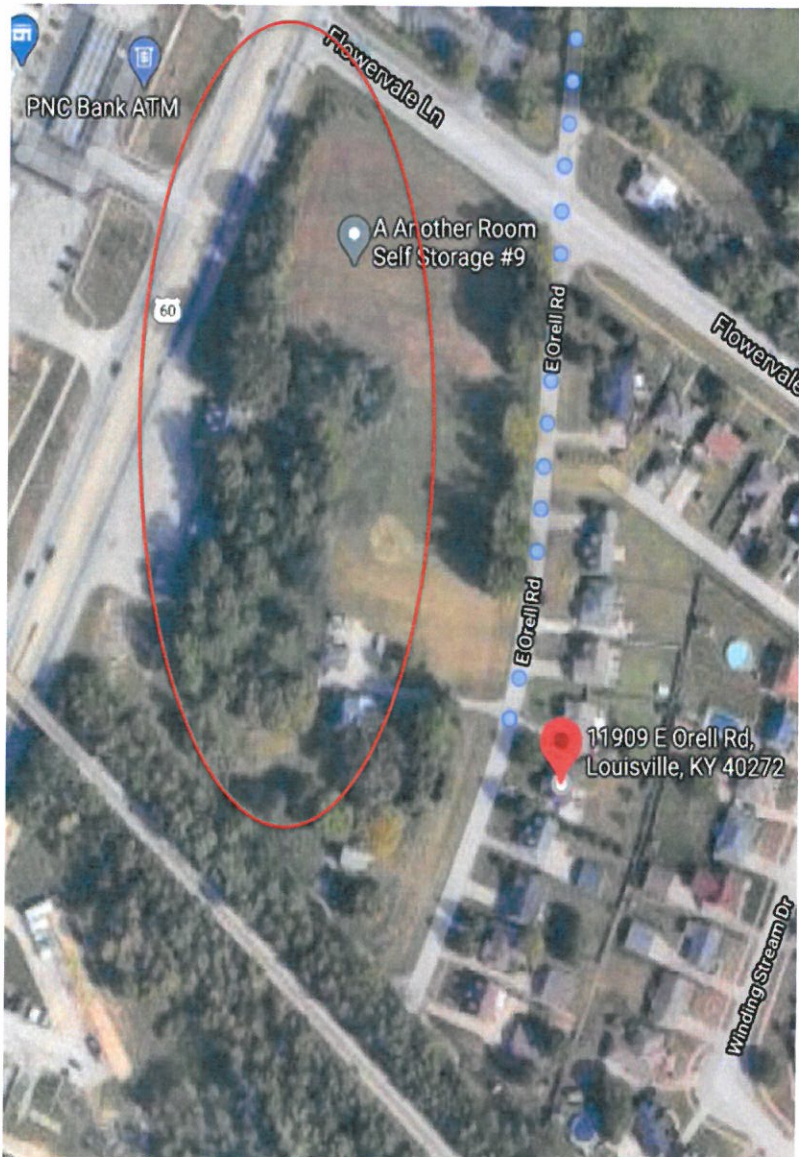
Commercial operations, including a Thornton's, a Wendy's, and a self-storage facility bound two sides for the property (north and east) and the site is bounded by a railroad line to the south.

Table 3.1-1. Ambient Noise Levels at Measurement Sites in dB(A) (Leq)

MEASUREMENT TIME	SITE B AMBIENT NOISE LEVEL dB(A)	SITE C AMBIENT NOISE LEVEL dB(A)	EFFECTIVE CONTRIBUTION OF OPERATING DIESEL STATION dB(A)
7:00 AM	62.1	57.3	4.8
12 Noon	61.5	55.3	6.2
4:30 PM	58.2	60.9	0
10:00 PM	57.9	60.5	0
1:00 AM	58.9	59.7	0

“Research at Colorado State University found that noise levels at oil and gas sites exceeded the maximum permissible noise levels for residential and commercial zones (55 dBA and 60 dBA, respectively).”

- *Earthworks.org*



Increased Noise

“A narrow strip of densely planted trees and shrubs of about 10m wide could still give significant reductions in traffic noise level - of the order of **5dB**” – www.trees.org

“A barrier is most effective when trees and shrubs are combined with soft rather than hard ground surfaces, i.e. grass instead of tarmac or gravel. **Hard surfaces tend to reflect noise with little or no attenuation.**” – www.trees.org

Sources

<https://www.sciencedaily.com/releases/2018/04/180409103920.htm>

<https://thecitizen.com/2011/04/07/gas-leak-snarls-s-fayetteville-traffic/>

<https://thecitizen.com/2011/04/07/gas-leak-snarls-s-fayetteville-traffic/>

<https://www.trees.org.uk/Trees.org.uk/files/8c/8c69f212-a82e-424b-96d1-c8ff6dc02403.pdf>

https://www.earthworks.org/issues/oil_and_gas_noise/

<https://www.ehso.emory.edu/documents/toolbox-training-static-electricity-and-gas-pump-fires.pdf>

https://safety.lovetoknow.com/Gas_Station_Environment_Hazards

<https://www.nrdc.org/experts/amy-mall/how-far-should-oil-and-gas-facilities-be-home-federal-government-more-protective>

<https://thecitizen.com/2011/04/07/gas-leak-snarls-s-fayetteville-traffic/>

<https://news.cuanschutz.edu/news-stories/those-living-near-oil-and-gas-facilities-may-be-at-higher-risk-of-cancer-and-other-diseases>

U.S. EPA, www.epa.gov; National Institutes of Health, www.nih.gov.

<https://www.blueridgeoutdoors.com/go-outside/living-near-a-gas-station/>

1 SITE PHOTOMETRY PLAN
SCALE 1" = 30'-0"

GENERAL NOTES

1. ALL LIGHTS USED ON THIS PHOTOMETRY PLAN ARE RATED FULL CLOFF.

KEYED NOTES

- 1) MOUNT AREA LUMINAIRE AT 30'-0" AFD (INCLUDING POLE DIAM.)
- 2) MOUNT AREA LUMINAIRE AT 30'-0" AFD (INCLUDING POLE DIAM.)

STATISTICS

Description	Number	Wp	Wp	Wp/Wp	Wp/Wp
Mount Priority	+	0.0 W	0.0 W	0.0 W	0.0 W
000 Energy	+	0.0 W	11.0 W	0.0 W	0.0 W
000 Power	+	0.0 W	0.0 W	0.0 W	0.0 W
000	+	0.0 W	0.0 W	0.0 W	0.0 W

LUMINAIRE SCHEDULE

Number	Wp	Wp	Wp	Description	Wp	Wp	Wp	Wp	Wp
1	0	0	0	0	0	0	0	0	0
2	0	0	0	0	0	0	0	0	0
3	0	0	0	0	0	0	0	0	0
4	0	0	0	0	0	0	0	0	0
5	0	0	0	0	0	0	0	0	0
6	0	0	0	0	0	0	0	0	0
7	0	0	0	0	0	0	0	0	0
8	0	0	0	0	0	0	0	0	0
9	0	0	0	0	0	0	0	0	0
10	0	0	0	0	0	0	0	0	0

Racetrac
THESE PLANS ARE SUBJECT TO FEDERAL COPYRIGHT LAWS AND USE OF THEM WITHOUT THE EXPRESSED WRITTEN PERMISSION OF RACETRAC PETROLEUM, INC. IS PROHIBITED. 011 RACETRAC PETROLEUM, INC.

GTP
Consulting Engineers
1107 Peachtree Street
Atlanta, GA 30309
404.525.1200 404.525.1270

DATE/REVISION RECORD

DATE	DESCRIPTION
01/23/21	CIVIL PROJECT 000P

Racetrac
RACETRAC PETROLEUM, INC.
270 SULLY ROAD
SUITE 400
ATLANTA, GEORGIA 30306
(770) 471-7600

PROJECT NAME
FLOWERVALE

LOUISVILLE, KENTUCKY
11705 DRUE HWY
LOUISVILLE, KY 40272

RACETRAC PROJECT NUMBER
1448

PROTOTYPE SERIES
2021 RH MO XXXX

PLAN MODIFICATION NOTICE

SP-B NO. XXX DATE XXXXXX
STANDARD PLAN INCLUDES (SPB) MOOD PROTOTYPE SERIES SET UNDER AFD LISTS AND REPRESENTS THE MODIFICATION INCORPORATED. PROTOTYPE SERIES SET AT ORIGINAL THE MODIFICATION RECORD CALLING LISTS ARE SYSTEMS OR ARE INCORPORATED IN THIS SET AFTER THE ORIGINAL DESIGN. CONTACT RACETRAC ENGINEERS AND ARCHITECTS FOR ANY INFORMATION. PROTOTYPE SET INCORPORATED HEREIN.

PROFESSIONAL SEAL



PROJECT NUMBER
20103.00

SHEET TITLE

SITE PHOTOMETRY PLAN

SHEET NUMBER

SP-1

ISSUED FOR PERMIT