

SABAK, WILSON & LINGO, INC.
ENGINEERS, LANDSCAPE ARCHITECTS & PLANNERS
THE HENRY CLAY • 608 S. THIRD STREET
LOUISVILLE, KENTUCKY 40202
PHONE : (502) 584-6271 FAX : (502) 584-6292

November 2, 2018

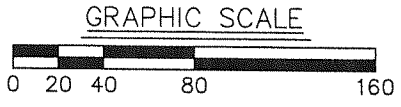
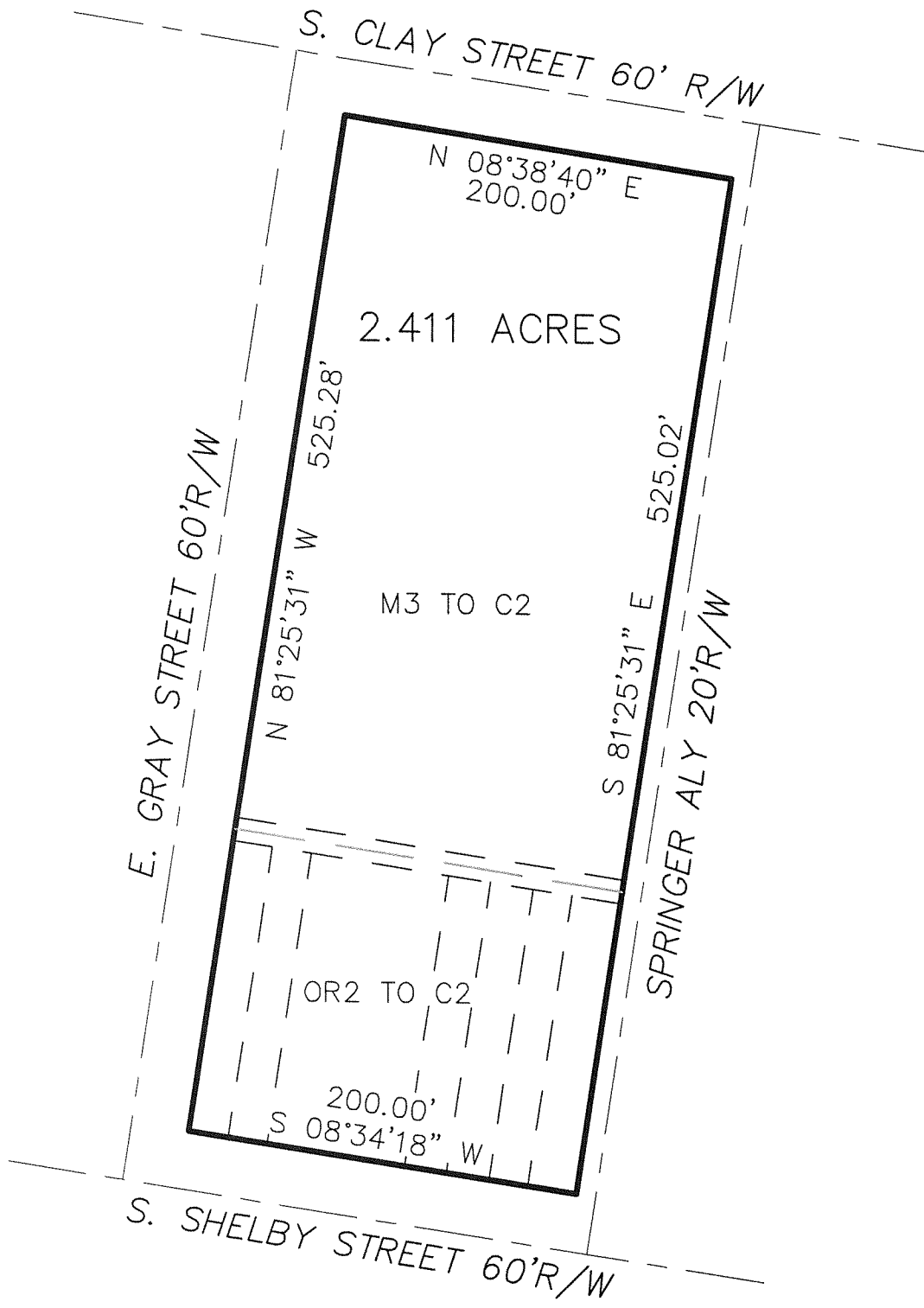
REZONING DESCRIPTION

This description is for rezoning purposes only, is not the result of a field survey and does not comply with 201kar18:150. This description is not for the purpose of land transfer or the conveyance of real property.

Beginning at a point at the northeast corner of East Gray Street and South Clay Street; Thence with the east line of South Clay Street, North $08^{\circ}38'40''$ East, a distance of 200.00 feet to a point, and corner to 20 foot wide Springer Aly; Thence with the south line of Springer Aly, South $81^{\circ}25'31''$ East, a distance of 525.02 feet to a point in the west line of South Shelby Street in the south line of Springer Aly; Thence with the west line of South Shelby Street, South $08^{\circ}34'18''$ West, a distance of 200.00 feet to a point in the north line of East Gray Street; Thence with the north line of East Gray Street, North $81^{\circ}25'31''$ West, a distance of 525.28 feet to the Point of Beginning, having an area of 105,030 square feet, 2.411 acres.



THIS PLAT IS FOR REZONING PURPOSES ONLY, IS NOT THE RESULT OF A FIELD SURVEY AND DOES NOT COMPLY WITH 201KAR18:150. THIS PLAT IS NOT FOR THE PURPOSE OF LAND TRANSFER OR THE CONVEYANCE OF REAL PROPERTY.



**REZONING EXHIBIT
GRAY AND CLAY**

OWNERS

TKW, LLC
715 E GRAY ST
LOUISVILLE, KY, 40202
D.B. 9205, PG. 377
D.B. 9179, PG. 398

ROMAN CATHOLIC BISHOP OF LOU.
PO BOX 1073
LOUISVILLE, KENTUCKY 40201
D.B. 8598, PG. 653
D.B. 8783, PG. 562 & 566
D.B. 8589, PG. 651

SABAK, WILSON & LINGO INC.
Engineers, Landscape Architects & Planners
The Henry Clay
608 S. Third Street
Louisville, Kentucky 40202
PH: 502-584-6271 FAX: 502-584-6292

SCALE 1"=80' DATE: 11-02-18 JOB NO. 3074