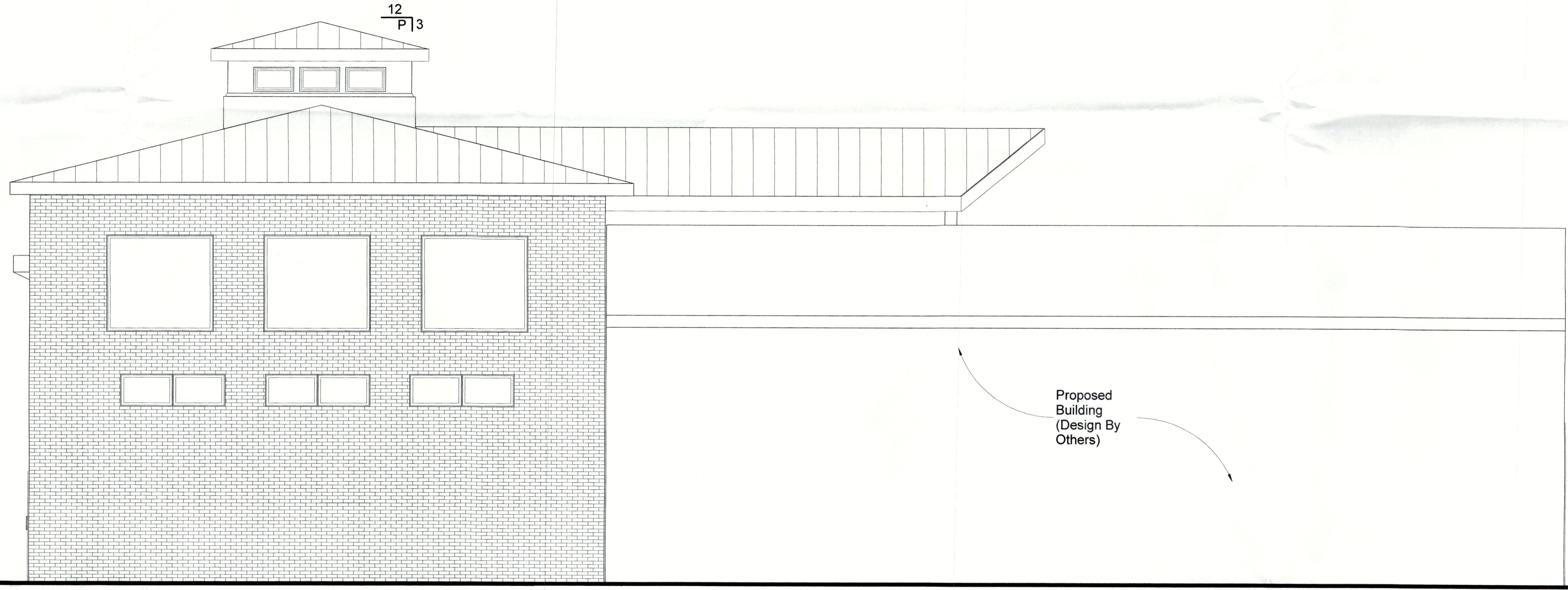


Note:
Builder must verify all dimensions,
drawings, and code compliance
before starting construction.



Proposed Building
(Design By
Others)

RECEIVED
JAN 15 2021
PLANNING & DESIGN
SERVICES

① Right NC
1/4" = 1'-0"

PROJECT: LOUISVILLE DIVE CENTER
4265 ROOSEVELT AVENUE, LOUISVILLE, KY 40213

DEVELOPER: LANCASTER AQUATICS

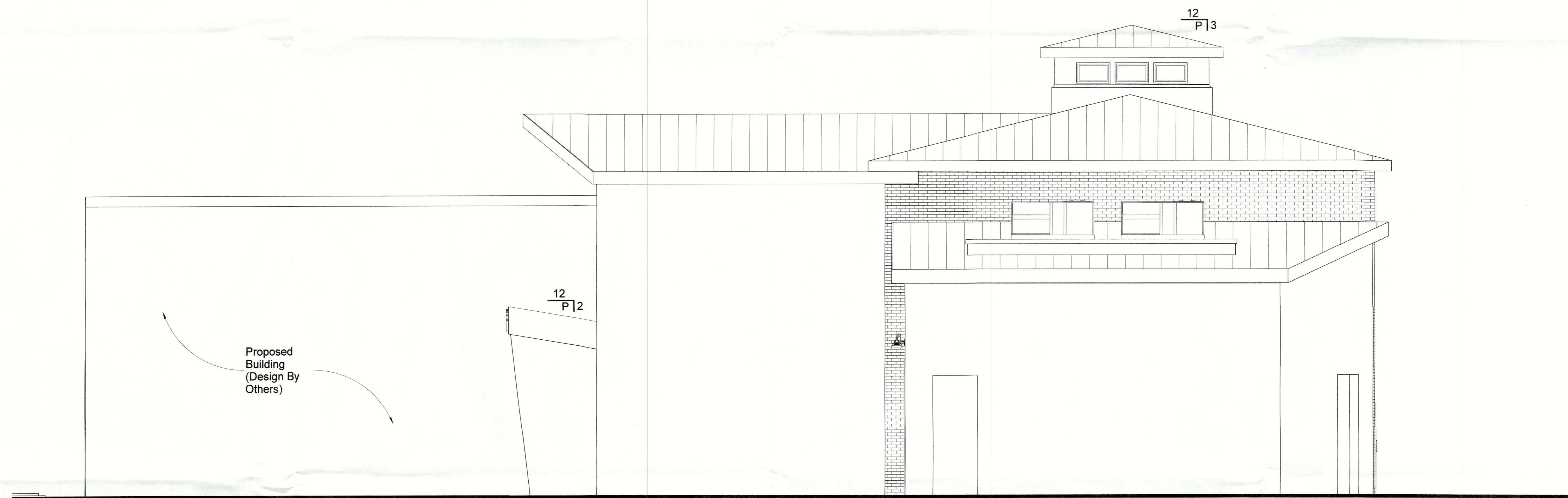
Proposed Left Elevation

No.	Description	Date
4	Revision 4 (Proceeding 3.2)	1/13/2020

Revision: 4
Issue Date: 1/13/2020

Design By Missy Klein

Note:
Builder must verify all dimensions,
drawings, and code compliance
before starting construction.



① Left NC
1/4" = 1'-0"

RECEIVED
JAN 15 2021
PLANNING & DESIGN
SERVICES

PROJECT: LOUISVILLE DIVE CENTER
4265 ROOSEVELT AVENUE, LOUISVILLE, KY 40213

DEVELOPER: LANCASTER AQUATICS

Proposed Right Elevation

No.	Description	Date
4	Revision 4 (Proceeding 3.2)	1/13/2020

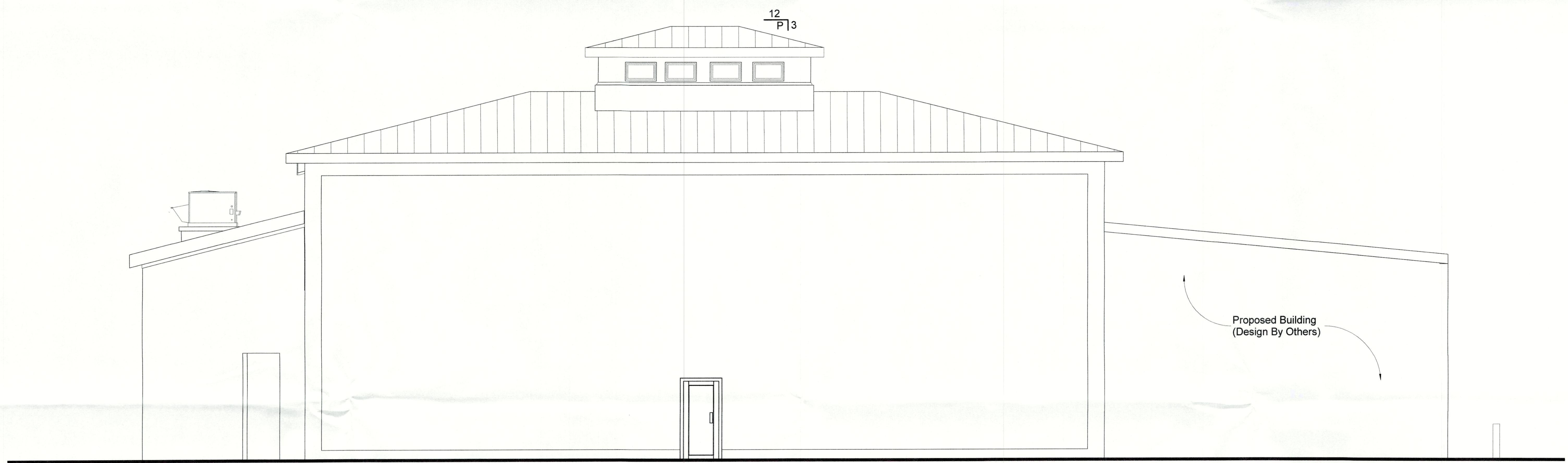
Revision: 4

Issue Date: 1/13/2020

Design By Missy Klein

20 - CAT 2 - 0033

Note:
Builder must verify all dimensions,
drawings, and code compliance
before starting construction.



① Front NC
1/4" = 1'-0"

RECEIVED
JAN 15 2021
PLANNING & DESIGN
SERVICES

PROJECT: LOUISVILLE DIVE CENTER
4265 ROOSEVELT AVENUE, LOUISVILLE, KY 40213

DEVELOPER: LANCASTER AQUATICS

Proposed Rear Elevation

No.	Description	Date
4	Revision 4 (Proceeding 3.2)	1/13/2020

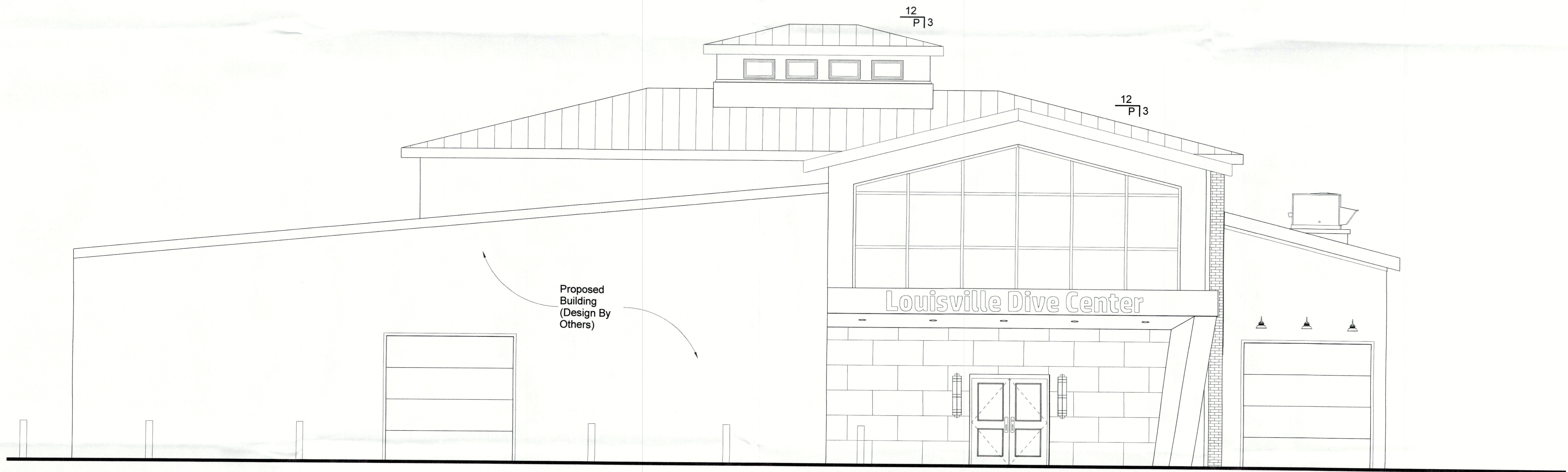
Revision: 4

Issue Date: 1/13/2020

Design By Missy Klein

20-CAT 2-0033

Note:
Builder must verify all dimensions,
drawings, and code compliance
before starting construction.



1 Rear NC
1/4" = 1'-0"

RECEIVED
JAN 15 2021
PLANNING & DESIGN
SERVICES

PROJECT: LOUISVILLE DIVE CENTER
4265 ROOSEVELT AVENUE, LOUISVILLE, KY 40213

DEVELOPER: LANCASTER AQUATICS

Proposed Front Elevation

No.	Description	Date
4	Revision 4 (Proceeding 3.2)	1/13/2020

Revision: 4

Issue Date: 1/13/2020

Design By Missy Klein