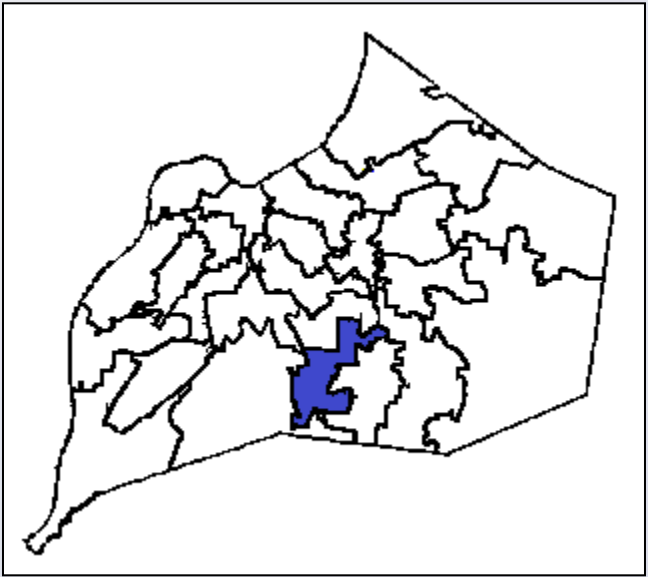
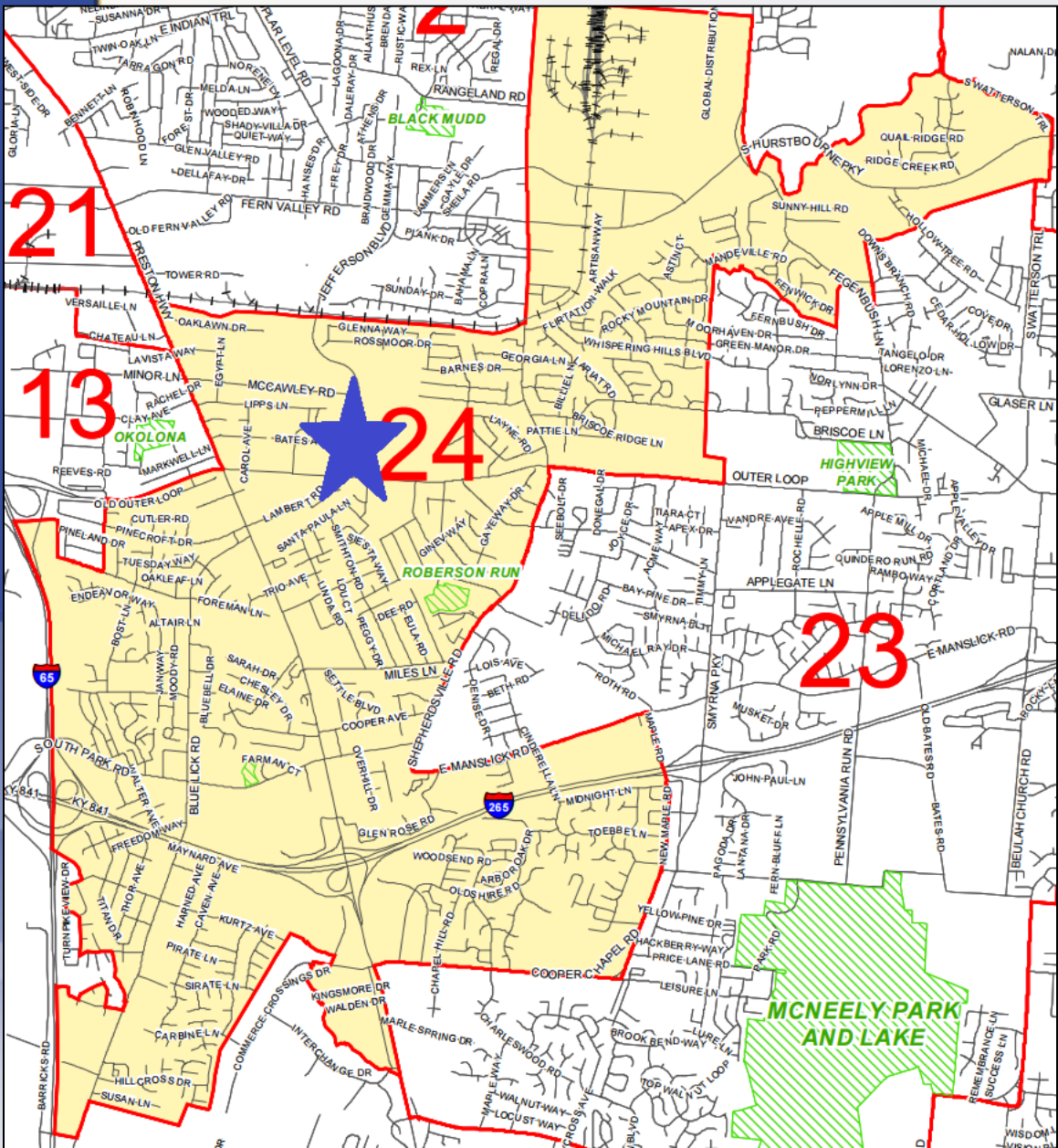


17STREETS1001

Bates Avenue ROW Closure



Planning/Zoning, Land Design & Development
August 1, 2017



North side of Bates Avenue
at intersection with
Jefferson Boulevard
District 24 - Madonna
Flood

Request(s)

- Close portion of ROW for Bates Avenue
- Request was previously approved in 1990 but was never properly recorded



GRAPHIC SCALE IN FEET

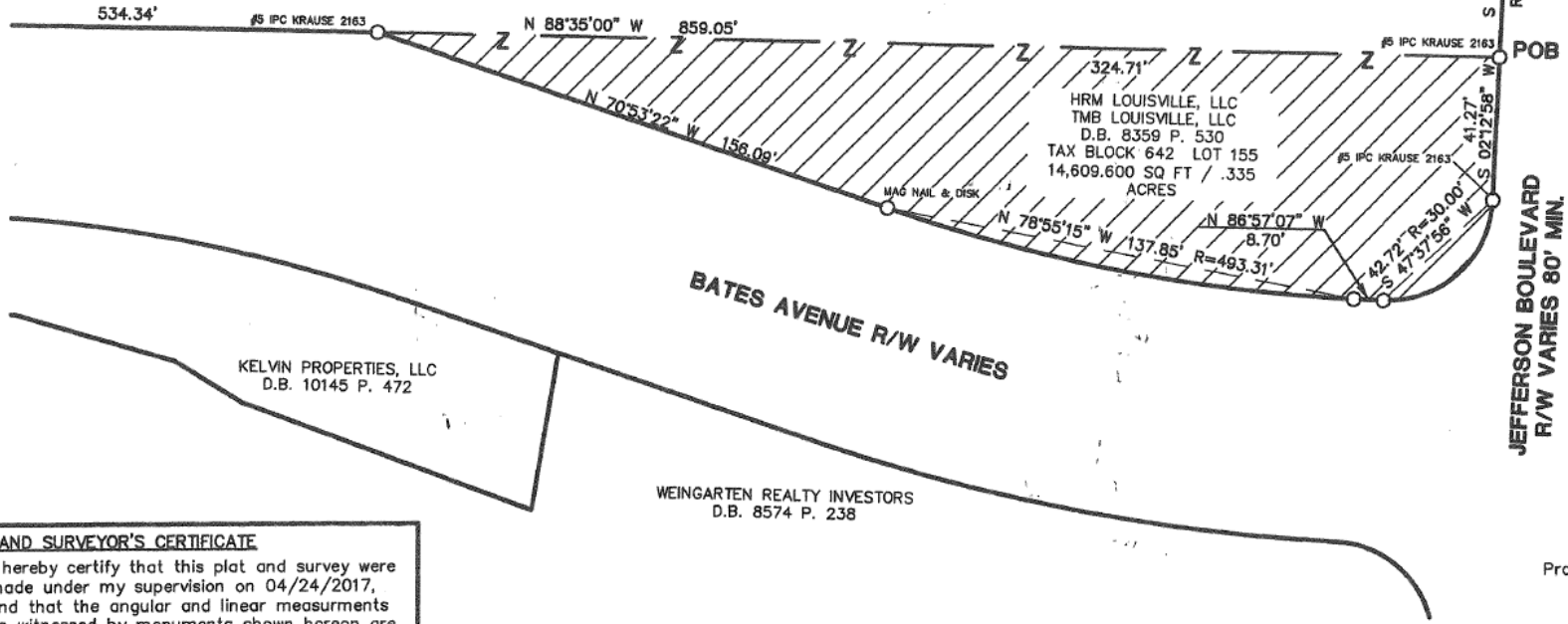
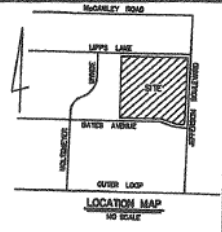


BEARING DATUM

The horizontal datum for this plat, bearing S02°12'58" W is based on West-right-of-way line of Jefferson Boulevard, as described in Deed of record in Deed Book 8359, Page 530, in the Office of the clerk of the County Court of Jefferson County, Kentucky

LEGEND

- Indicates set 1/2" iron pin w/ cap stamped "RS Matheny PLS 3173" ***Unless otherwise noted***
- Indicates found monument *As Noted*
- POB** Point of Beginning



KELVIN PROPERTIES, LLC
D.B. 10145 P. 472

WEINGARTEN REALTY INVESTORS
D.B. 8574 P. 238

JEFFERSON BOULEVARD
R/W VARIES 80' MIN.

Project No. 17 Streets 1001

LAND SURVEYOR'S CERTIFICATE
I hereby certify that this plat and survey were made under my supervision on 04/24/2017, and that the angular and linear measurements as witnessed by monuments shown hereon are true and correct to the best of my knowledge and belief. This survey was made by method of random traverse with sideshots. The unadjusted closure ratio of the traverse was 1:138,929 and was not adjusted. This survey and plat meets or exceeds the minimum standards of governing authorities for a class "A" survey.

Richard Matheny
RICHARD MATHENY - P.L.S. # 3173 DATE: 4-24-17

Property Information:
OWNERS & CLIENTS
HRM LOUISVILLE, LLC, a Georgia Limited Liability Company & TMB LOUISVILLE, LLC, a Georgia Limited Liability Company
3350 Riverwood Pkwy, Suite 450
Atlanta, Georgia 30339

ROAD CLOSING PLAT BATES AVE
7500 JEFFERSON BLVD
LOUISVILLE, KY 40219
D.B. 8359 Pg. 530
Parcel ID: 064203220000
Zoning: C-2, Regional Center
This survey complies with 201 KAR 18:150

STATE OF KENTUCKY
RICHARD S. MATHENY
3173
LICENSED PROFESSIONAL LAND SURVEYOR

CARDINAL SURVEYING
9009 PRESTON HWY.
LOUISVILLE, KY 40219
Phone (502) 966-3446
www.cardinalsurveyingservices.com

DRAWN BY: SMS
SCALE: 1" = 40'
DATE: 04/24/2017
FIELD SURVEY DATE: 07/28/2016
BY: CC



PC Recommendation

- The Planning Commission conducted public hearings on 6/29/2017
- No one spoke in opposition
- The Commission made sufficient findings that the proposal complies with the Comprehensive Plan-Cornerstone 2020
- The Commission recommended approval of the closure by a vote of 6-0 (6 members voted)