

PARKING SUMMARY:

Table with 2 columns: EXISTING BUILDING #1, EXISTING BUILDING #3, EXISTING BUILDING #4. Rows include Gross Area, Net Area, Proposed Parking, Total Parking, etc.

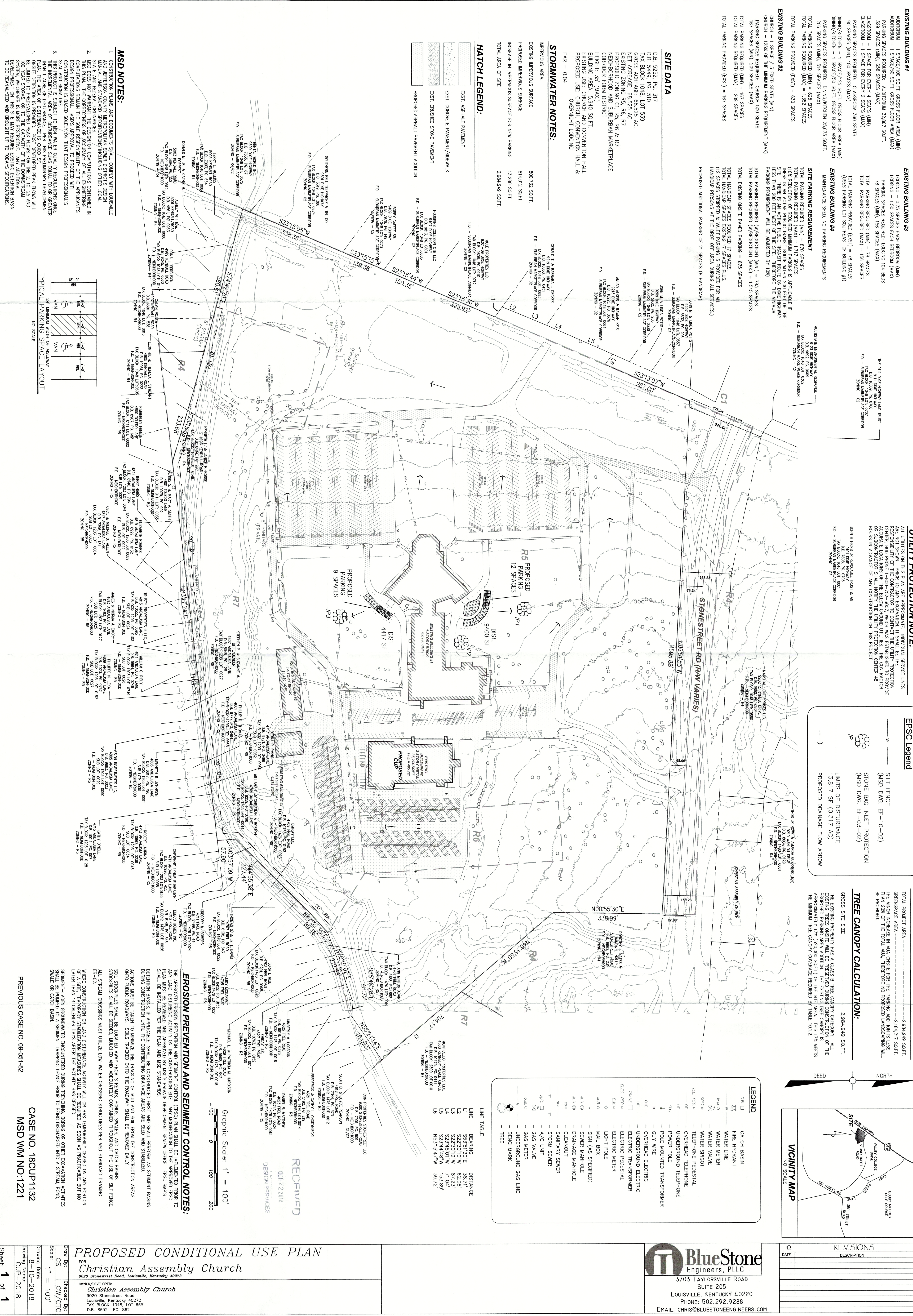
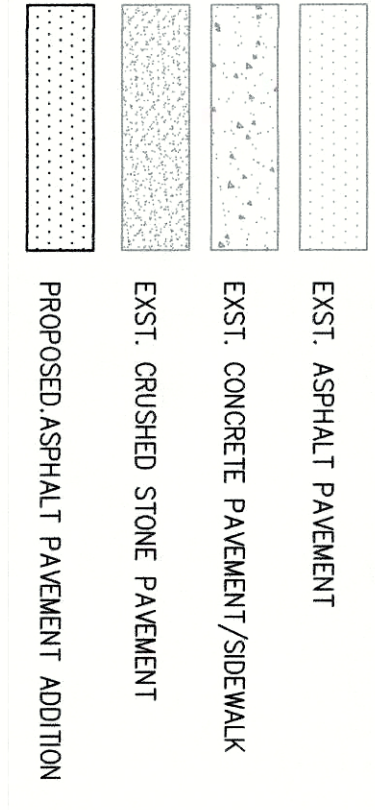
SITE DATA

D.B. 5922, P.G. 317
D.B. 5949, P.G. 310
D.B. 6020, P.G. 310
GROSS ACREAGE: 68.525 AC.

STORMWATER NOTES:

IMPERVIOUS AREA: 800,732 SQ.FT.
PROPOSED IMPERVIOUS SURFACE: 814,012 SQ.FT.
INCREASE IN IMPERVIOUS SURFACE FOR NEW PARKING: 13,280 SQ.FT.

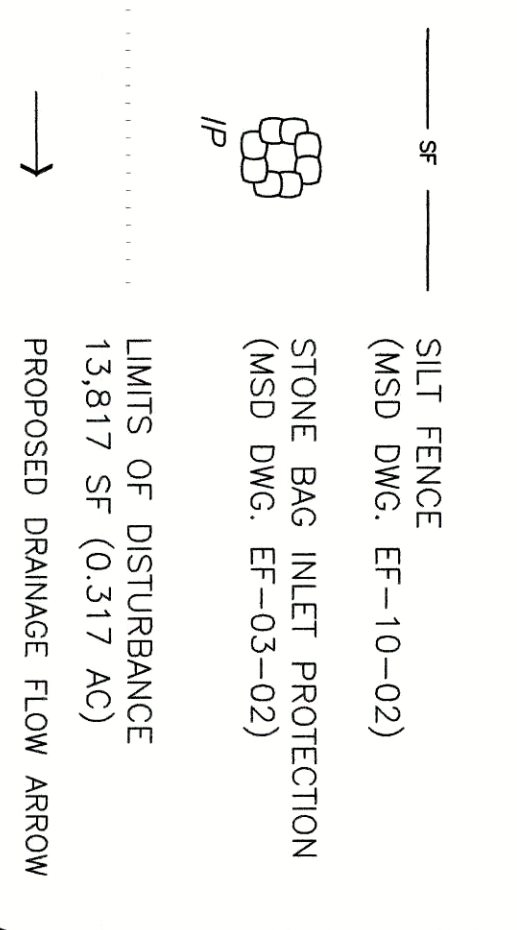
HATCH LEGEND:



UTILITY PROTECTION NOTE:

ALL UTILITIES ON THIS PLAN ARE APPROXIMATE. INDIVIDUAL SERVICE LINES ARE THE RESPONSIBILITY OF THE CONTRACTOR TO VERIFY THE LOCATION AND DEPTH OF ALL UTILITIES.

EPSC Legend

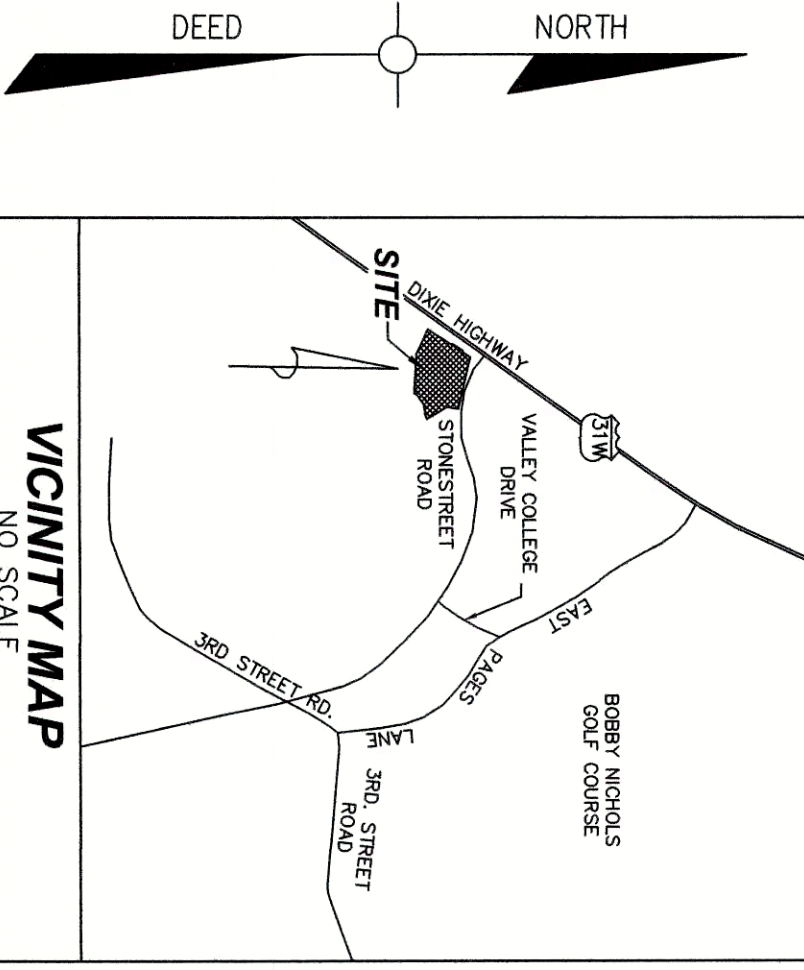


LANDSCAPING SUMMARY:

TOTAL PROJECT AREA: 2,984,949 SQ.FT.
GROSS SITE SIZE: 2,984,949 SQ.FT.

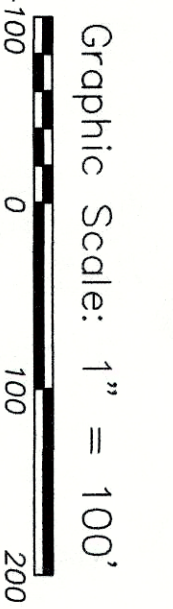
TREE CANOPY CALCULATION:

THE EXISTING PROPERTY HAS A CLASS B TREE CANOPY CATEGORY. ALL THE EXISTING TREES ON SITE WILL BE PRESERVED DURING CONSTRUCTION.



LEGEND table listing symbols for Catch Basin, Fire Hydrant, Water Line, etc.

LINE TABLE table listing line numbers (L1-L6) and their corresponding bearings and distances.



EROSION PREVENTION AND SEDIMENT CONTROL NOTES:
THE APPROVED EROSION PREVENTION AND SEDIMENT CONTROL (EPC) PLAN SHALL BE IMPLEMENTED PRIOR TO ANY LAND-DISTURBING ACTIVITIES ON THE CONSTRUCTION SITE.

MSD NOTES:
CONSTRUCTION PLANS AND DOCUMENTS SHALL COMPLY WITH LOUISIANA AND AUSTIN COUNTY METROPOLITAN SEWER DISTRICTS DESIGN STANDARDS AND SPECIFICATIONS INCLUDING OTHER LOCAL, STATE AND FEDERAL REGULATIONS.

Project information including: PROPOSED CONDITIONAL USE PLAN for Christian Assembly Church, BlueStone Engineers, PLLC, 3703 Taylorsville Road, Suite 205, Louisville, Kentucky 40220. Includes drawing title, scale, and sheet number.