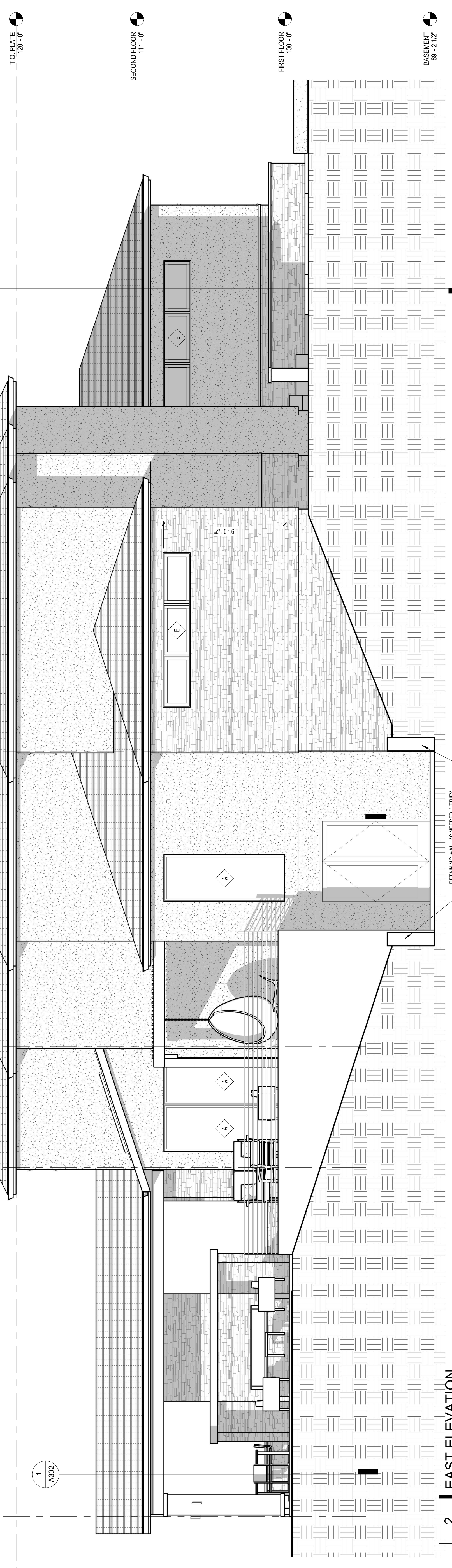


- EXTERIOR MATERIALS**
- EXTERIOR FINISH 1: STUCCO FINISH, COLOR TBD (WHITE)
  - EXTERIOR FINISH 2: STONE VENEER EL DORADO STONE OR APPROVED EQUAL WITH 1/2" WAINSCOT SILL W/ SPLIT EDGE
  - ROOF 1: ASPHALT SHINGLE ROOF
  - SOFFIT 1: DARK GREY VENTED ALUMINUM
  - SOFFIT 2: WHITE BEAD BOARD
  - CEILING 1: T&G W/D CEILING, STAINED AND SEALED
  - CEILING 2: 1/2" T&G W/D CEILING, STAINED AND SEALED
  - FLOORING 1: 3/4" T&G W/D FLOOR, STAINED AND SEALED
  - FLOORING 2: 3/4" T&G W/D FLOOR, PAINTED BLACK (SEE WALL SECTIONS)
  - PIECEM FASCIA PAINTED BLACK (SEE WALL SECTIONS)
  - GUTTER SYSTEM: STEEL RAILING, BLACK
  - NOT USED: DECOR, STAINED AND SEALED
  - CMU BLOCK LANDSCAPE WALLS W/ STONE VENEER EL DORADO STONE
  - OR APPROVED EQUAL W/ CAST STONE CAP WITH "SPLIT EDGE"

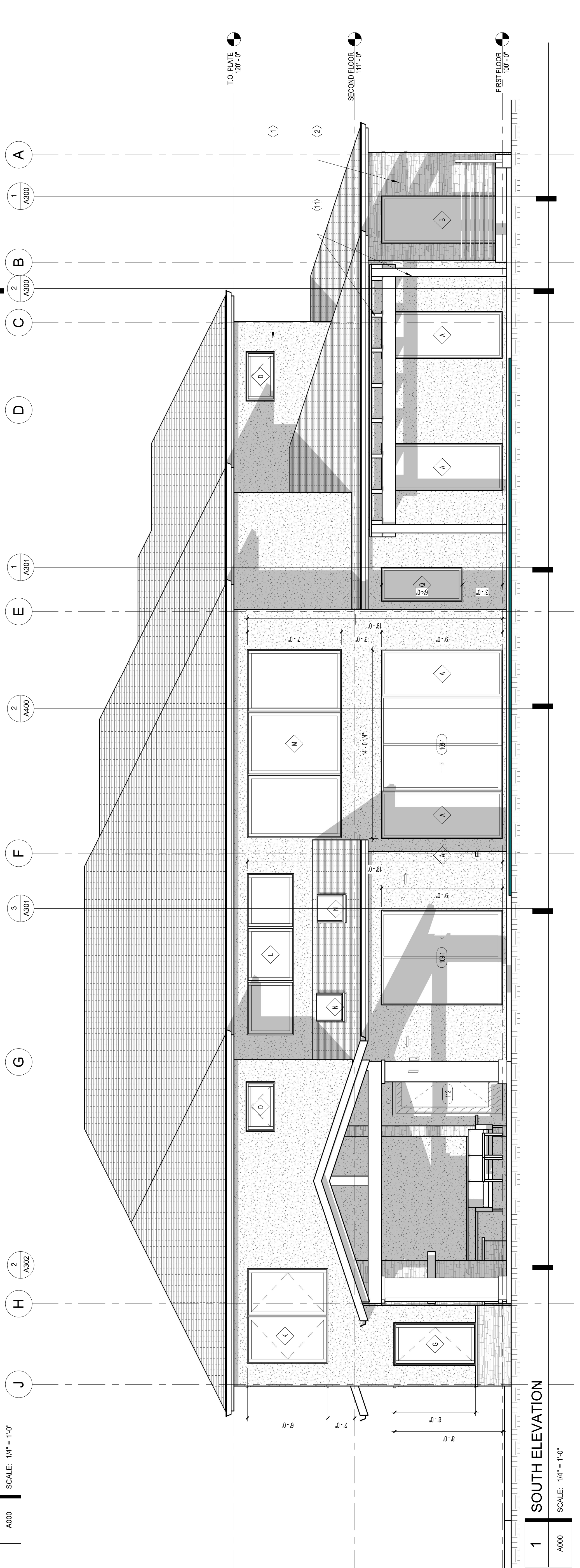


**2 EAST ELEVATION**

SCALE: 1/4" = 1'-0"

A000

DATE	DESCRIPTION
01/26/2021	BID SET



**1 SOUTH ELEVATION**

SCALE: 1/4" = 1'-0"

A000