

20-DDP-0037

**Hurstbourne Senior Apartments
4901 S Hurstbourne Parkway**



Louisville Metro Planning Commission

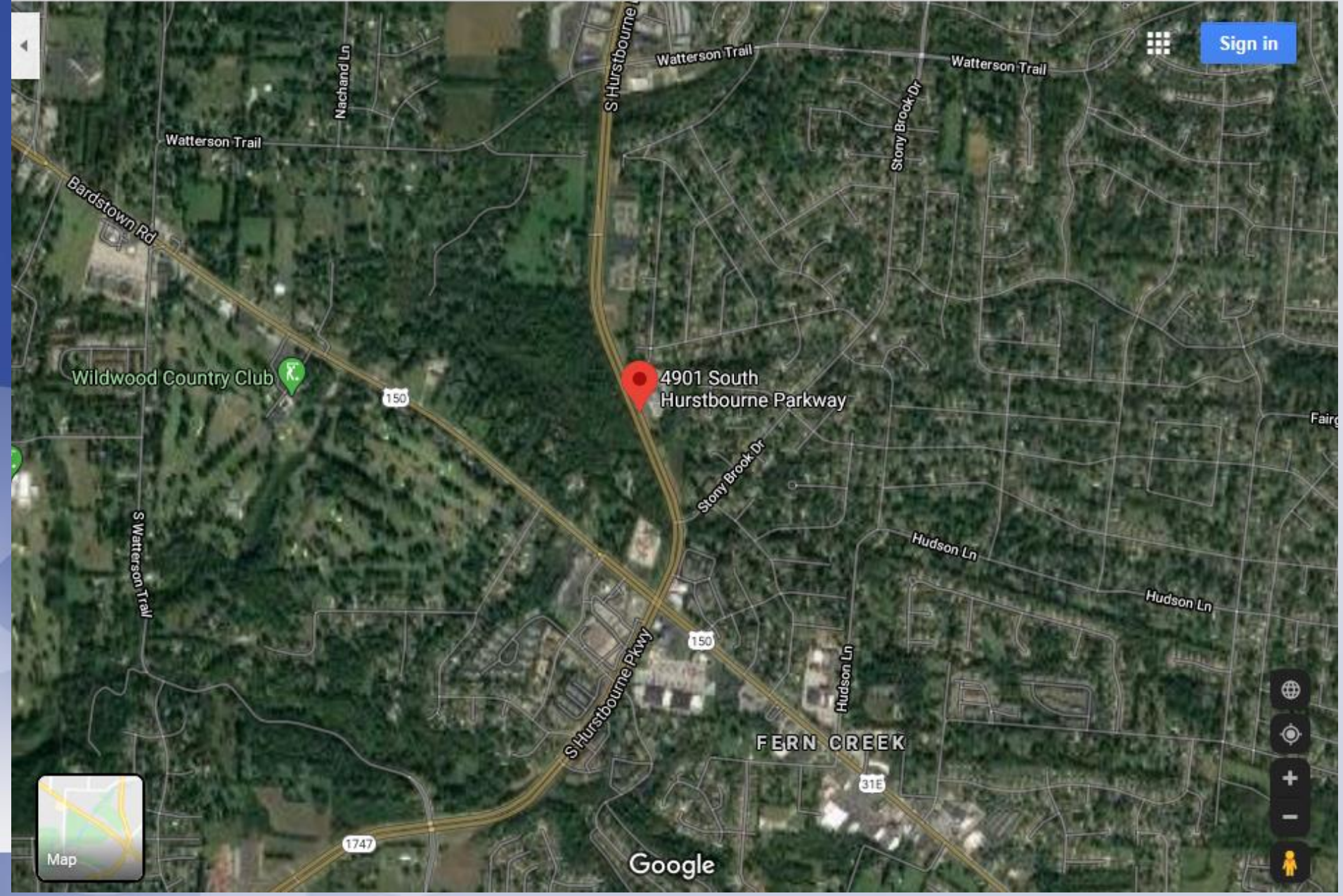
Lacey Gabbard, AICP, Planner I

August 19, 2020

Requests

- Revised District Development Plan with Binding Element Amendments

Site Context



Case Summary

- Zoned C-2 Commercial and R-4 Single Family Residential in the Neighborhood form district.
- The site is currently undeveloped, and the applicant is proposing to construct a 73,346 square foot Independent Senior Living development on the C-2 zoned portion of the subject site and an onsite detention basin on the R-4 zoned portion of the site.
- The proposal is for one structure containing seventy (70) living units.
- The proposed structure is three stories at a maximum 45 foot height.

Zoning/Form Districts



Aerial Photo



Elevations



FRONT ELEVATION
TOWARD S. HURSTBOURNE PKWY
 SCALE 1/8" = 1'-0"



RIGHT SIDE ELEVATION
 SCALE 1/8" = 1'-0"

Staff Finding

- The District Development Plan is adequately justified and meets the standard of review.

Required Actions

- **APPROVE** or **DENY** the District Development Plan with Binding Element Amendments