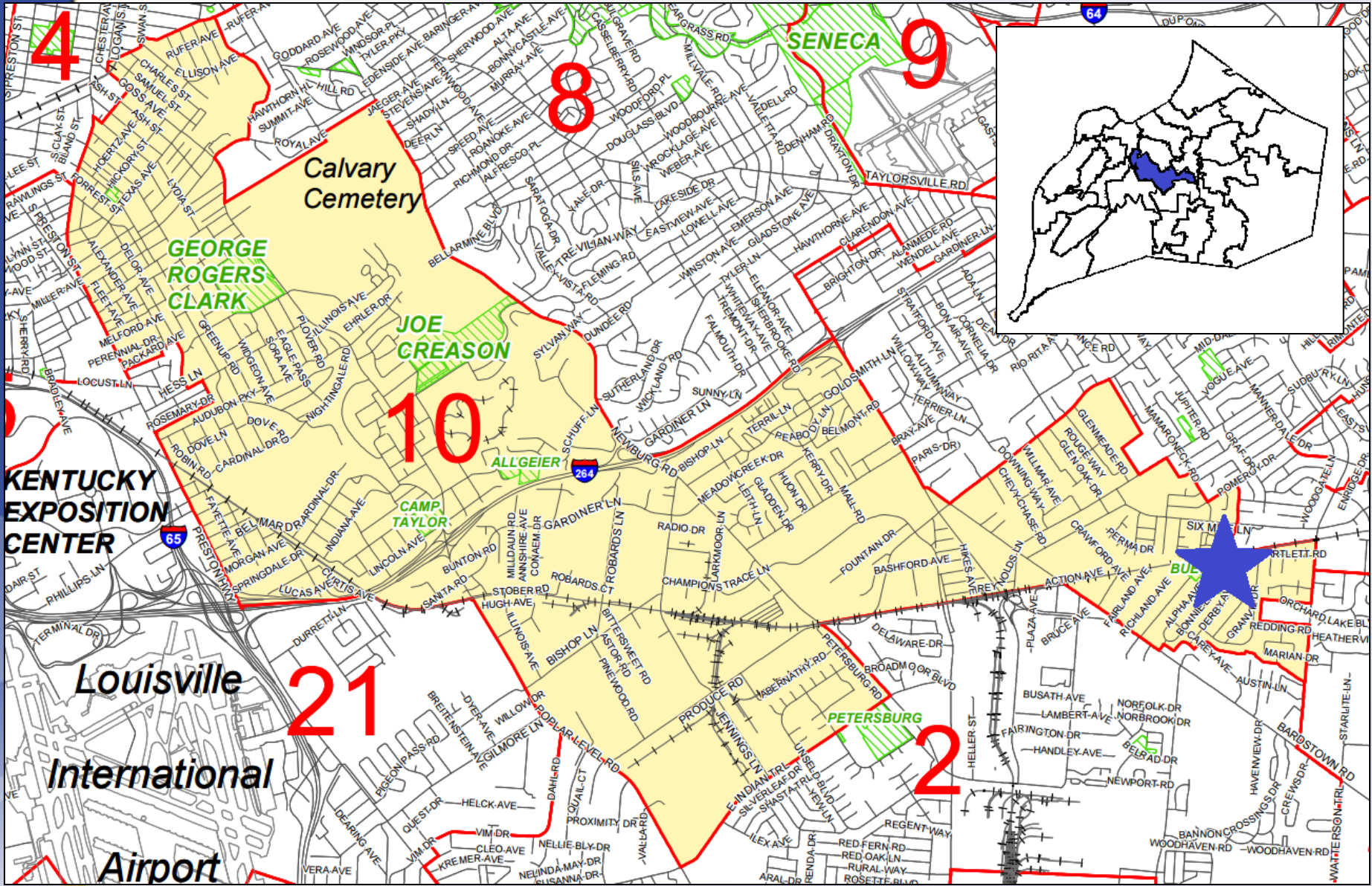


# 17STREETS1010

## Derby Avenue Closure



Planning/Zoning, Land Design & Development  
October 31, 2017



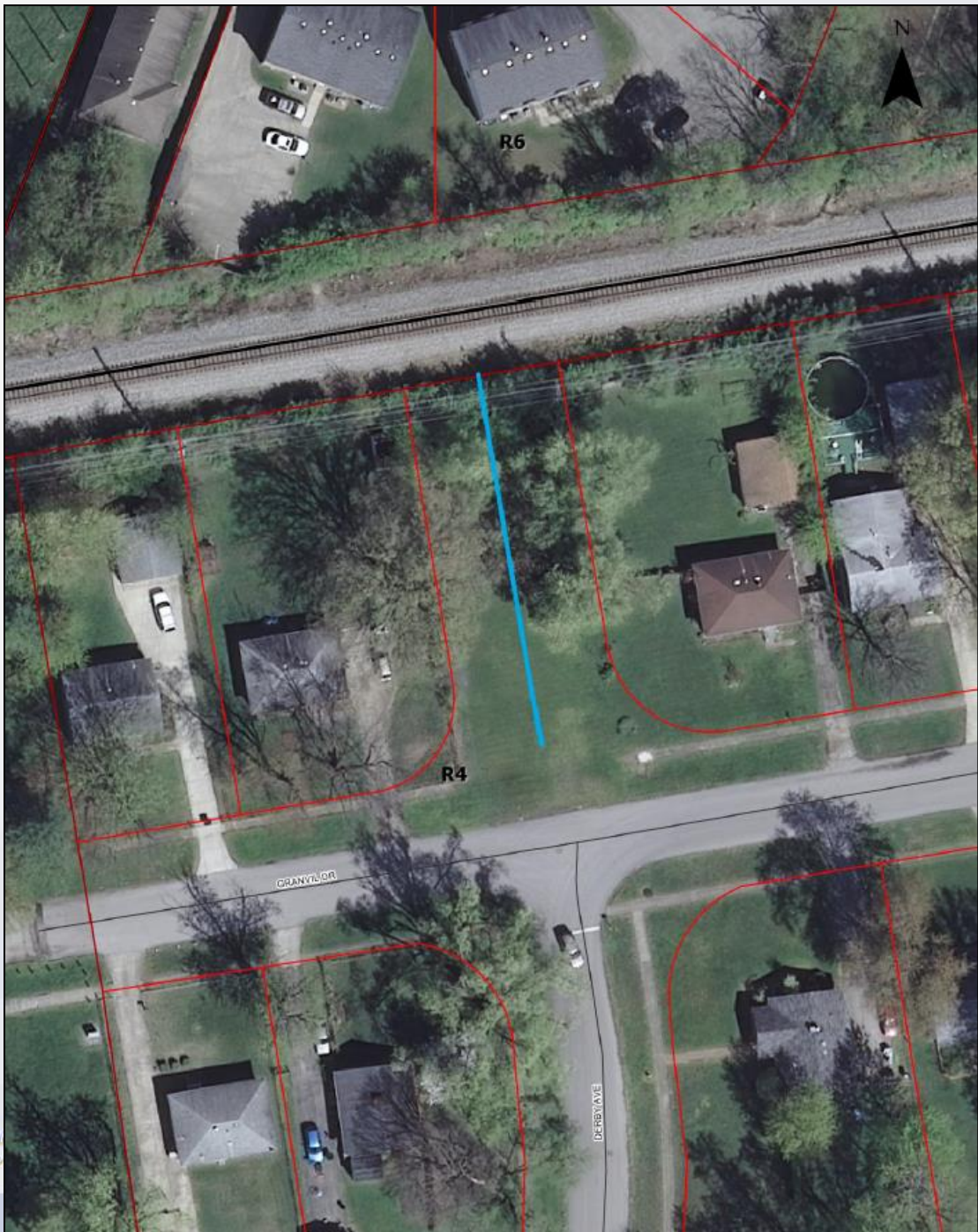


# Request(s)

- Request to close an unimproved portion of Derby Avenue located north of Granvil Drive

# Case Summary

- 15 feet along railroad will be given to Norfolk Southern Railway Company
- Remainder of property will be split between the two residential properties





# PC Recommendation

- The Planning Commission conducted a public hearing on 10/5/2017
- No one spoke in opposition
- The Commission made sufficient findings that the proposal complies with the Comprehensive Plan-Cornerstone 2020
- The Commission recommended approval of the closure by a vote of 9-0 (9 members voted)