

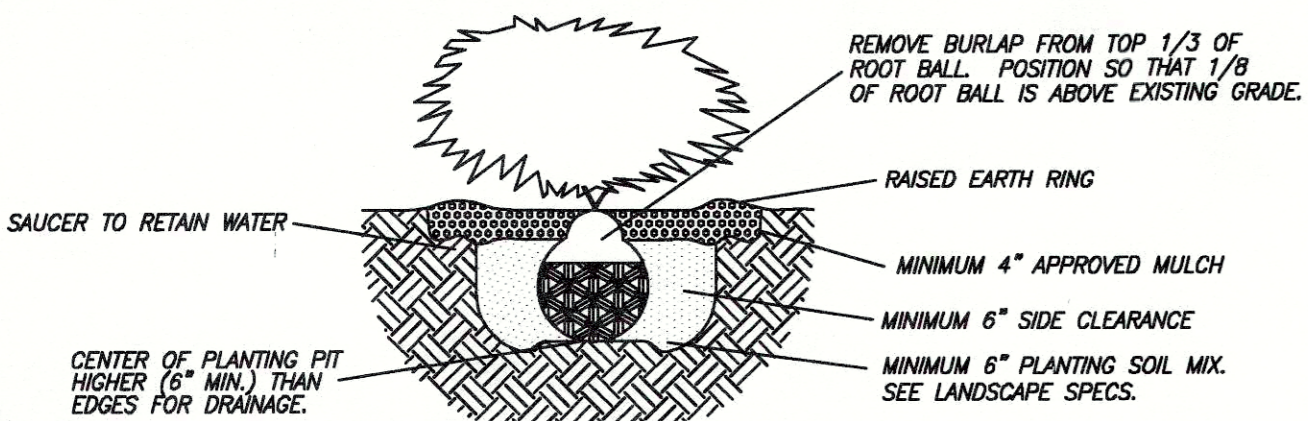
KEY	QTY.	BOTANICAL NAME	COMMON NAME	SIZE	COMMENTS
GT	2	GLEDISIA TRI. VAR. INERMUIS 'SKYLINE'	'SKYLINE' LOCUST	2" CAL. B&B	SPACED AS SHOWN
UP	4	ULMUS PARVIFOLIA	LACEBARK ELM	1 3/4"-2" CAL. B&B	SPACED AS SHOWN
BW	36	BUXUS X 'WINTERGEM'	'WINTERGEM' BOXWOOD	24" B&B	SPACED 3 FT. O.C.
TW	56	TAXUS X MEDIA 'WARDII'	TAXUS 'WARDII'	24" B&B	SPACED 3 FT. O.C.
BB	33	EUONYMUS ALATUS COMPACTUS	DWARF BURNING BUSH	24" B&B	SPACED 3 FT. O.C.

LANDSCAPE NOTES:

- ALL PLANT MATERIAL TO MEET AND BE INSTALLED ACCORDING TO AMERICAN ASSOCIATION OF NURSERYMEN STANDARDS.
- MULCH TO BE DOUBLE PROCESSED HARDWOOD OR BETTER.
- SEED AND STRAW OR SOD TO BE FESCUE BLEND.
- PLANTS AND INSTALLATION SUBJECT TO INSPECTION.
- GRASS OR GROUND COVER SHALL BE PLANTED ON ALL PORTIONS OF THE LANDSCAPE BUFFER AREA NOT OCCUPIED BY OTHER LANDSCAPE MATERIAL.
- SKYLINE LOCUST TREES SHALL BE LIMBED TO 6 FT.

GENERAL NOTES:

- ALL SERVICE STRUCTURES SHALL BE SCREENED IN ACCORDANCE WITH ARTICLE 12 SECTION D.11.



EVERGREEN SHRUB PLANTING

N.T.S.

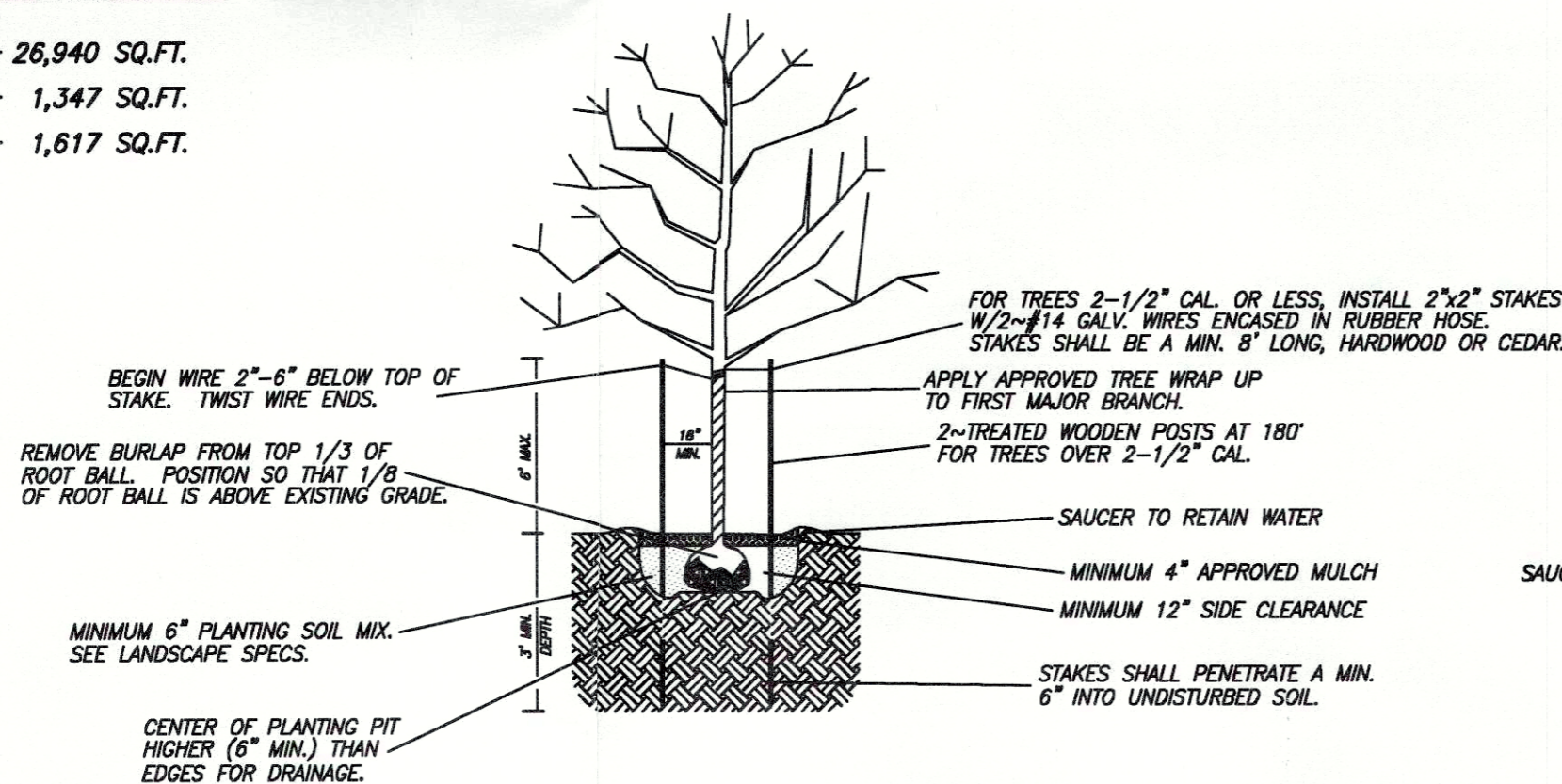
TREE PRESERVATION NOTE:

CONSTRUCTION FENCING SHALL BE ERECTED PRIOR TO ANY GRADING OR CONSTRUCTION ACTIVITIES TO PROTECT THE EXISTING TREE STANDS AND THEIR ROOT SYSTEMS FROM COMPACTION. THE FENCING SHALL ENCLOSE THE ENTIRE AREA BENEATH THE TREE CANOPY AND SHALL REMAIN IN PLACE UNTIL ALL CONSTRUCTION IS COMPLETED. NO PARKING, MATERIAL STORAGE, OR CONSTRUCTION ACTIVITIES ARE TO BE PERMITTED WITHIN THESE PROTECTED AREAS.

WHERE, DUE TO THE NATURE OF CONSTRUCTION PLANS, THE TREE PROTECTION FENCING IS NOT LOCATED THREE (3) FEET FROM THE OUTSIDE EDGE OF TREE CANOPY, THE TREE SHALL NOT BE CONSIDERED PRESERVED. HOWEVER, THIS DOES NOT PROHIBIT EFFORTS TO SAVE THE TREE.

LANDSCAPING SUMMARY:

- VEHICULAR USE AREA ----- 26,940 SQ.FT.
- REQUIRED INTERIOR LANDSCAPING ----- 1,347 SQ.FT.
- PROVIDED INTERIOR LANDSCAPING ----- 1,617 SQ.FT.



DECIDUOUS TREE PLANTING

N.T.S.

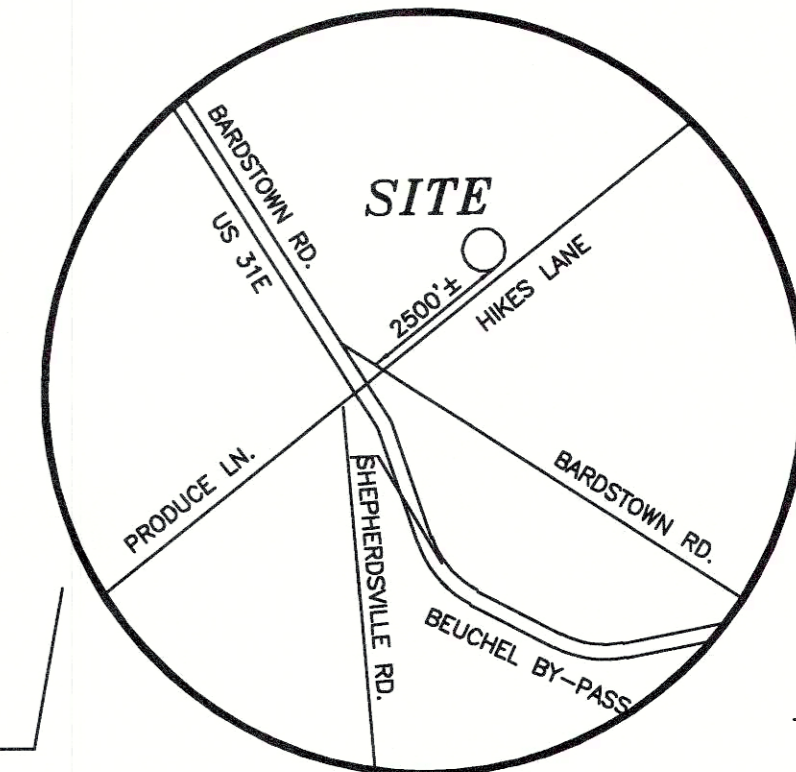
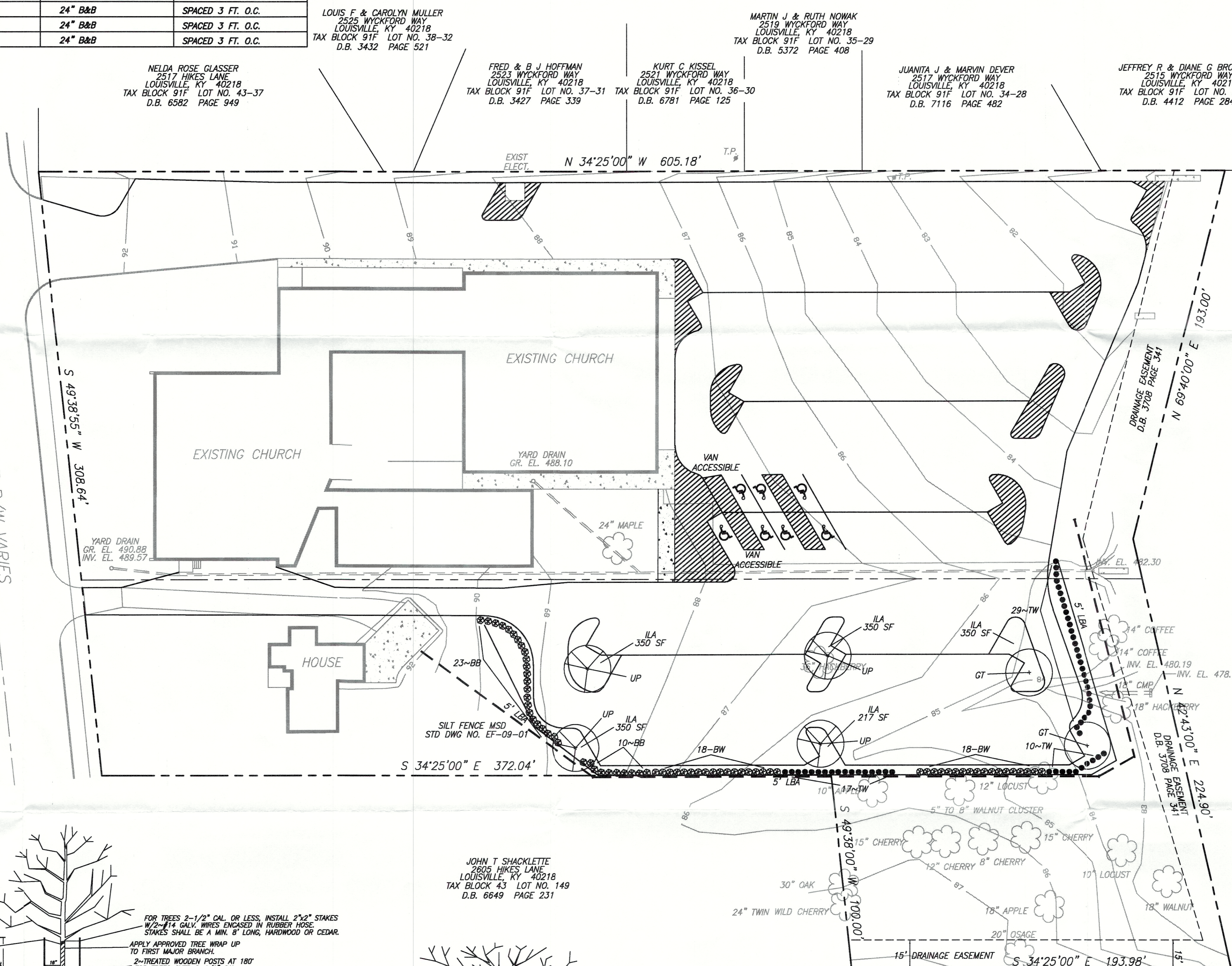


DECIDUOUS SHRUB PLANTING

N.T.S.

UTILITY PROTECTION NOTE:

ALL UTILITIES SHOWN ON THIS PLAN ARE APPROXIMATE. INDIVIDUAL SERVICE LINES ARE NOT SHOWN. PRIOR TO ANY EXCAVATION, IT SHALL BE THE RESPONSIBILITY OF THE CONTRACTOR TO CONTACT THE UTILITY PROTECTION CENTER, BLDG PHONE: 1-800-752-6007, WHICH WAS ESTABLISHED TO PROVIDE ACCURATE LOCATIONS OF THE BELOW GROUND UTILITIES. THE CONTRACTOR OR SUBCONTRACTOR SHALL NOTIFY THE UTILITY PROTECTION CENTER 48 HOURS IN ADVANCE OF ANY CONSTRUCTION ON THIS PROJECT.



LOCATION MAP

N.T.S.

GLENBROOK APARTMENTS
7320 LAGRANGE ROAD #208
LOUISVILLE, KY 40222
TAX BLOCK 1859 LOT NO. 3
D.B. 6727 PAGE 778

GLENBROOK APARTMENTS
7320 LAGRANGE ROAD #208
LOUISVILLE, KY 40222
TAX BLOCK 1859 LOT NO. 3
D.B. 6727 PAGE 778

Article 12 Compliance Plan
APPROVED

FEB 21 2003
By: *B. H. All*
Docket No. *L-153-02*
Planning & Development Services
Louisville & Jefferson County Planning Commission

RECEIVED
FEB 21 2003

MARV A. BLOMQUIST
14,890
LICENSED PROFESSIONAL ENGINEER

Marv Blomquist

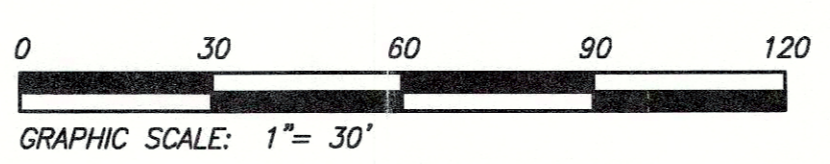
'LANDSCAPE PLAN'

PARKING LOT EXPANSION

HIKES POINT CHRISTIAN CHURCH
2601 HIKES LANE
LOUISVILLE, KENTUCKY 40218

BLOMQUIST DESIGN GROUP, LLC
10529 TIMBERWOOD CIRCLE SUITE "E"
LOUISVILLE, KENTUCKY 40223
PHONE: 429.0105 FAX: 429.6861
EMAIL: MARVBDG@AOL.COM

REVISIONS	SCALE:
	1" = 30'
	DRWN: MAB
	CKD: MAB
	DATE: JANUARY 31, 2003



NO.	2
SHEETS IN SET	2

L-153-02