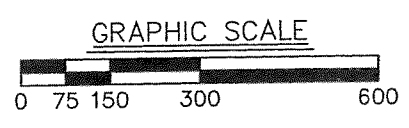


- | | | |
|---------------------|---------------------|---------------------|
| ① N 75°03' W 10.0' | ⑨ N 87°23' W 15.0' | ⑰ S 14°10' E 14.1' |
| ② S 14°57' W 125.0' | ⑩ N 00°44' E 145.5' | ⑱ S 74°34' W 173.2' |
| ③ S 82°28' E 6.4' | ⑪ S 74°55' W 160.3' | ⑲ S 72°01' W 135.1' |
| ④ S 06°58' W 181.8' | ⑫ S 60°06' W 42.0' | ⑳ N 13°03' E 12.4' |
| ⑤ S 80°27' W 50.7' | ⑬ S 78°20' W 60.8' | ㉑ N 15°24' E 217.2' |
| ⑥ S 00°05' W 90.9' | ⑭ S 83°23' W 46.5' | |
| ⑦ S 88°45' W 71.2' | ⑮ N 14°10' W 11.2' | |
| ⑧ S 00°23' W 212.1' | ⑯ S 75°50' W 130.2' | |



RENAISSANCE SOUTH BUSINESS PARK
 REZONING EXHIBIT
 SUB AREA SOUTH—TRACTS A & E

**RENAISSANCE ZONE SOUTH
REZONING DESCRIPTION
R-4 TO EZ-1
TRACT A**

Beginning to a point in the north right-of-way line of South Park Road and the southwest corner of a tract conveyed to Michael England as recorded in Deed Book 6684, Page 542 in the office of the clerk of Jefferson County, Kentucky; thence with the west line of England North 14°55' East, 1118.5 feet, more or less, to a point in the south line of a tract conveyed to Air Commerce, LLC as recorded in Deed Book 10327, Page 128 in the aforementioned clerk's office; thence with Air Commerce, LLC North 85°04' East, 280.2 feet, more or less, to a point; thence South 14°40' West, 388.9 feet, more or less, to a point; thence North 85°41' East, 943.9 feet, more or less, to a point in Minors Lane, thence with Minors Lane South 21°10' West, 231.1 feet, more or less, to a point; thence leaving Minors Lane the following courses:

South 88°05' West, 203.8 feet, more or less, to a point;

South 14°57' West, 309.0 feet, more or less, to a point;

North 75°03' West, 10.0 feet, more or less, to a point;

South 14°57' West, 125.0 feet, more or less, to a point;

South 82°28' East, 6.4 feet, more or less, to a point;

South 06°58' West, 181.8 feet, more or less, to a point in the north right-of-way line of South Park Road; thence with the north right-of-way line of South Park Road South 80°27' West, 50.7 feet, more or less, to a point; thence North 86°23' West, 216.0 feet, more or less, to a point, thence leaving the north right-of-way line of South Park Road the following courses:

North 06°24' East, 585.1 feet, more or less, to a point;

South 88°05' West, 362.2 feet, more or less, to a point;

South 14°40' West, 269.4 feet, more or less, to a point;

North 79°30' West, 134.0 feet, more or less, to a point;

South 14°47' West, 337.5 feet, more or less, to the point of beginning containing

14.0 acres.

**RENAISSANCE ZONE SOUTH
REZONING DESCRIPTION
C-1 & C-2 TO EZ-1
TRACT E**

Beginning at the southwest corner of a Tract conveyed to JAM Development II, LLC as recorded in Deed Book 8313, Page 338 in the office of the clerk of Jefferson County, Kentucky; thence with the south line of JAM North 79°21' East, 758.7 feet, more or less, to a point in the northwest corner of a tract conveyed to Louisville Renaissance Zone Corporation as recorded in Deed Book 9727, Page 34 in the aforementioned clerk's office; thence with Louisville Renaissance Zone Corporation South 00°05' West, 90.9 feet, more or less, to a point, thence South 88°45' West, 71.2 feet, more or less, to a point; thence South 00°23' West, 212.1 feet, more or less, to a point in the north right-of-way line of South Park Road; thence with the north right-of-way line of South Park Road North 87°23' West, 15.0 feet, more or less, to a point in the southeast corner of a tract conveyed to Evans and King Investments, LLC as recorded in Deed Book 9071, Page 915 in the aforementioned clerk's office; thence with the north line of Evans and King the following courses:

North 00°44' East, 145.5 feet, more or less, to a point;
South 74°55' West, 160.3 feet, more or less, to a point;
South 60°06' West, 42.0 feet, more or less, to a point;
South 78°20' West, 60.8 feet, more or less, to a point;
South 83°23' West, 46.5 feet, more or less, to a point;
North 14°10' West, 11.2 feet, more or less, to a point;
South 75°50' West, 130.2 feet, more or less, to a point;
South 14°10' East, 14.1 feet, more or less, to a point;
South 74°34' West, 173.2 feet, more or less, to a point;

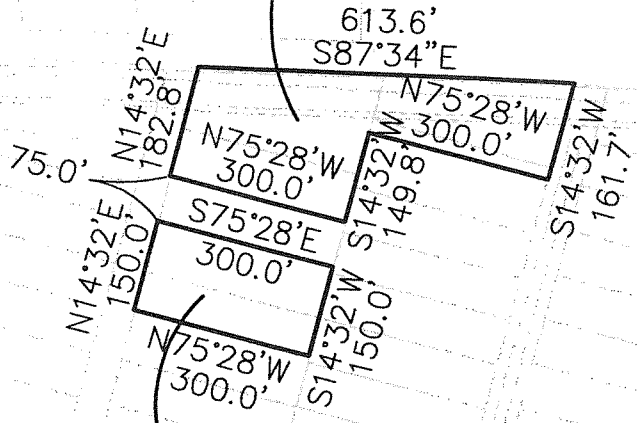
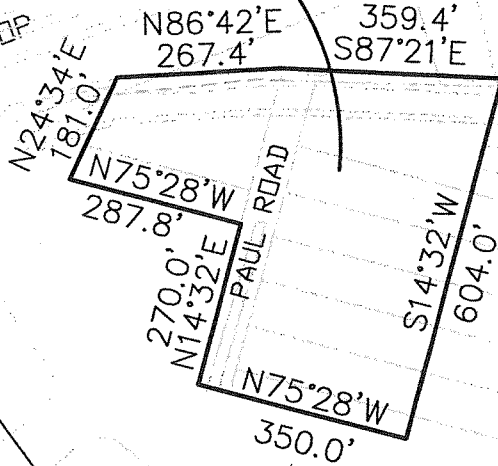
South 72°01' West, 135.1 feet, more or less, to a point in the east right-of-way line of Minors Lane; thence with the east right-of-way line of Minors Lane North 13°03' East, 12.4 feet, more or less, to the point thence North 15°24' East, 217.2 feet, more or less to the point of beginning containing 2.9 acres.

TRACT B
R-4 TO EZ-1
5.9 AC.

TRACT D
R-4 TO EZ-1
2.4 AC.

TRACT C
R-4 TO EZ-1
1.0 AC.

OUTER LOOP



LOT 2

UNIVERSAL WAY 60' R/W



RENAISSANCE ZONE SOUTH
BUSINESS PARK
P.B. 52 P. 31

LOT 1

AIR COMMERCE DRIVE 100' R/W

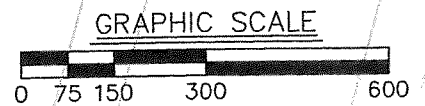
AVIATION WAY 60' R/W

FAULKNER LN

ZIB LN

FRED LN

TRANSGLOBAL DRIVE 60' R/W



RENAISSANCE SOUTH BUSINESS PARK
REZONING EXHIBIT
SUB AREA NORTH—TRACTS B, C & D



SABAK, WILSON & LINGO, INC.
ENGINEERS, LANDSCAPE ARCHITECTS & PLANNERS
315 WEST MARKET STREET, LOUISVILLE, KENTUCKY 40202 (502) 584-6271

Scale: 1"=300' Date: 03/15/16 Job No.: 2504DP

**RENAISSANCE ZONE SOUTH
REZONING DESCRIPTION
R-4 TO EZ-1
TRACT B**

Beginning at a point in the west right-of-way line of Paul Road; thence with the west right-of-line of Paul Road North $14^{\circ}32'$ East, 270.0 feet, more or less, to a point; thence leaving the west right-of-way line of Paul Road North $75^{\circ}28'$ West, 287.8 feet, more or less, to a point; thence North $24^{\circ}34'$ East, 181.0 feet, more or less, to a point in the center of South Ditch; thence with the center of South Ditch North $86^{\circ}42'$ East, 267.4 feet, more or less, to a point; thence South $87^{\circ}21'$ East, 359.4 feet, more or less, to a point; thence leaving South Ditch South $14^{\circ}32'$ West, 604.0 feet, more or less, to a point; thence North $75^{\circ}28'$ West, 350.0 feet, more or less to the point of beginning containing 5.9 acres

**RENAISSANCE ZONE SOUTH
REZONING DESCRIPTION
R-4 TO EZ-1
TRACT C**

Beginning at a point in the east right-of-way line of Faulkner Lane 257.8 feet, more or less south of the center of South Ditch; thence leaving Faulkner Lane the following courses:

South 75°28' East, 300.0 feet, more or less, to a point;

South 14°32' West, 150.0 feet, more or less, to a point;

North 75°28' West, 300.0 feet, more or less, to a point in the east right-of-way line of Faulkner Lane; thence with the east right-of-way line of Faulkner Lane North 14°32' East, 150.0 feet, more or less to the point of beginning containing 1.0 acres.

**RENAISSANCE ZONE SOUTH
REZONING DESCRIPTION
R-4 TO EZ-1
TRACT D**

Beginning at an intersection of the east right-of-way line of Faulkner Lane and the center of South Ditch; thence with the center of South Ditch South $87^{\circ}34'$ East, 613.6 feet, more or less, to a point in the west right-of-way line of Fred Lane; thence leaving the center of South Ditch and along the west right-of-way line of Fred Lane South $14^{\circ}32'$ West, 161.7 feet, more or less, to a point; thence leaving Fred Lane the following courses:

North $75^{\circ}28'$ East, 300.0 feet, more or less, to a point;

South $14^{\circ}32'$ West, 149.8 feet, more or less, to a point;

North $75^{\circ}28'$ West, 300.0 feet, more or less, to a point in the east right-of-way line of Faulkner Lane; thence with the east right-of-way line of Faulkner Lane North $14^{\circ}32'$ East, 182.8 feet, more or less to the point of beginning containing 2.4 acres.