



a racial groundswell. About five per cent of the emancipated people could read and write, and these were not slow to inject the spirit into the rest of their people, and by the time that the states were ready to inaugurate a system of schools, no class was more responsive than the late slaves. Some of the former slaves who had heard of colleges and universities, but had never seen either, aspired to found such for their people. The most remarkable instance occurred at Louisville, Kentucky, where a group of unlettered ex-slaves met in an old building in August (succeeding the close of the war, in April, 1865) and, though bearing the marks of slavery on their bodies, and simply knowing that a university meant a place of learning, took steps to begin a school which gradually

developed into what came to be known as the State University of Kentucky, a large and flourishing college for colored people which stands today in Louisville, with buildings and grounds in the heart of that city. Throughout the years, from that early time till now, it has done excellent work, not alone for the colored race but for the commonwealth of Kentucky, and is still a great educational lighthouse to a struggling people.



Henry McNeal Turner



William J. Simmons



Booker T. Washington



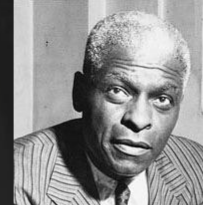
W.E.B. DuBois



Howard Thurman



Mordecai Johnson



Benjamin Mays



Ida B. Wells



Vernon Johns



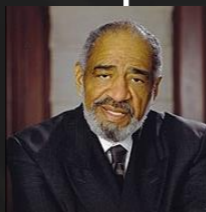
Martin Luther King, Jr.



Rosa Parks



Prathia Hall



William Augustus Jones



Wyatt T. Walker



Ralph David Abernathy, Sr.



Fred Shuttlesworth



Andrew Young



F.G. Sampson, II



Jesse Jackson



Al Sharpton



Otis Moss, Jr.



Jeremiah Wright

Simmons College of Kentucky has done more to bridge the racial divide and overcome the 9th street barrier, than any other institution in the city of Louisville.

The Huffington Post recently ranked Louisville as the fourth most segregated city in America. Simmons College of Kentucky finds this statistic unacceptable. In the words of Martin Luther King, Jr., “Racial segregation (concentrated poverty) produces social isolation, economic deprivation and emotional frustration.”

Simmons College of Kentucky is the greatest bridge ever constructed in Louisville to take West Louisvillians from despair to hope. At Simmons, West Louisville students are exposed to a world beyond the 9th Street divide.

- a. While Simmons seeks to serves all people in the Louisville Metro and beyond, our target demographic is West Louisville. According to “Louisville Magazine” there are 8 times more graduates in East Louisville compared to West Louisville. Louisville Magazine cites this statistic as the greatest gap between the East and West.**
- b. Simmons is a great source of pride for West Louisville and the black community.**
- c. Simmons College, America’s 107th designated HBCU, is poised to create educational excellence as the new norm for West Louisville.**

WEST END

22 SELECTED CENSUS TRACTS

EAST END

22 SELECTED CENSUS TRACTS

Unemployment
13.4%

African-American (70%)
WHITE (18%)

African-American (4%)
WHITE (81%)

Unemployment
3.9%

MEDIAN HOUSEHOLD INCOME: \$21,733

MEDIAN HOUSEHOLD INCOME: \$59,600

Head of Household

MALE: 62% FEMALE: 38%

Head of Household

MALE: 82% FEMALE: 8%

EDUCATION

Some College or Higher38%
Bachelor's Degree or Higher7%

EDUCATION

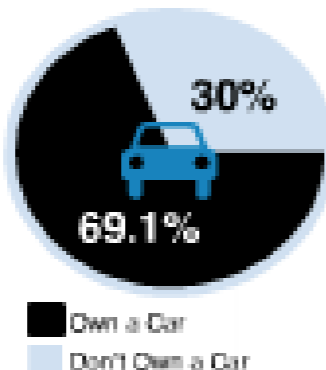
Some College or Higher79%
Bachelor's Degree or Higher55%

H O M E

Median Home Value\$66,977
Own Home33%
Vacant Units22%

H O M E

Median Home Value\$229,623
Own Home57%
Vacant Units9%



NEIGHBORHOODS

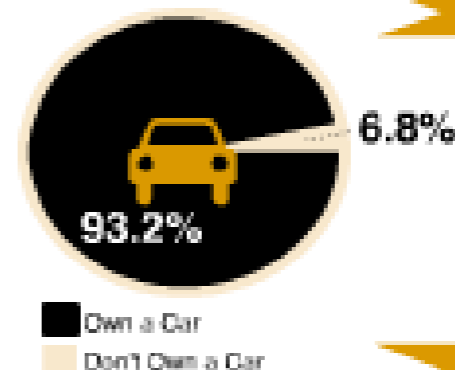
Algonquin
Call Tom la
Chickasaw
Park DuValle
Park Hill
Parkland
Portland
Russell
Shawnee

Population: 61,251

NEIGHBORHOODS

Clifton
Crescent Hill
Highlands
Middletown
St. Matthews
Mockingbird Valley
Windy Hills
Indian Hills
Strathmoor

Population: 68,523



All Businesses 1,856

All Businesses 6,352

Supermarkets	5	9
Banks	13	45
Pharmacies	6	21
Hospitals	0	6
Pediatric Physicians	11	73
OB/GYN Physicians	3	148
Dentists	65	188
Attorneys	6	157
Veterinarians	1	25
Restaurants	30	255
Coffee Shops	1	16
Bakers	3	20
Liquor Stores	24	18
Clothing Stores	12	53
Movie Theaters	0	2
Hotels/Motels	0	7
Barbershops	26	9
Beauty Salons	26	117

For the purposes of our statistical comparison of West End and East End, we started with the 22 census tracts that compose west Louisville, which we define as the area bounded roughly by Ninth Street, Algonquin Parkway and the Ohio River, and then selected 22 census tracts in the East End where many of our readers live. (See map on page 28.)

For data on population, race, income, home values, jobs, education and housing we used the 2007-2011 U.S. Census Bureau's American Community Survey.

To get an idea of how the two areas stack up in the kinds of businesses and amenities available to residents, we used data from ReferenceUSA, a company that maintains a database of about 15 million U.S. businesses.

A TALE OF TWO CITIES

Our statistical quest started with one basic question: If you compared the West End to a relatively affluent area in the East End that has roughly the same population, what would each area look like? How different would they be?

The basic answer: Very. As the accompanying data shows, in just about every economic statistical category — income, home values, unemployment, education — west Louisville's numbers are worse than the East End area's by a factor of about three. That's roughly three times lower in the case of income and home value and three times higher in unemployment rate and vacant housing units.

Simmons Has Received National Recognition:

- a. Huffington Post
- b. Atlanta Journal Constitution
- c. Rickey Smiley Show
- d. Ebony Magazine
- e. Tom Joyner Radio Show



For the first time in the history of the Commonwealth of Kentucky and the city of Louisville, a private black institution will bring to the city, annually, hundreds of thousands of dollars to advance higher education among African Americans.

- a. Our first allocation was received on October 1st. Simmons will receive from the U.S. Dept. of Education, half a million dollars over the next two years. This allocation will increase in subsequent years.**
- b. Simmons College is eligible for the \$1.1 Billion that is set aside exclusively for HBCU's, of which 73% is set aside for capital development loans for private HBCUs like Simmons**

SIMMONS

BY THE

NUMBERS

COLLEGE OF KENTUCKY

6 DEGREE PROGRAMS

Bachelor of Arts

Business Administration
Sociology
Communications
Religious Studies
Music

Associate of Arts

General Studies

40

**FACULTY
MEMBERS**

220

**COURSE
OFFERINGS**

210

STUDENTS

\$5,310

**TUITION
PER YEAR**

Simmons College of Kentucky has created Articulation Agreements with:

- University of Louisville**
- Campbellsville University**
- Kentucky State University**
- University of Kentucky (Spring 2017)**



Simmons College of Kentucky has a partnership with Baptist Seminary of Kentucky, bringing graduate education to West Louisville.

STUDENTACTIVITIES

- **Men's Basketball Team**
- **Women's Basketball Team**
- **Band and Drum Line**
- **Dance Team**
- **Student Government Association**
- **Sociology Club**
- **Business Club**

WHY AN HISTORICALLY BLACK COLLEGE & UNIVERSITY (HBCU)

FOR LOUISVILLE?

**HBCU's educated 3% of
African American Students.**

WHY AN HISTORICALLY BLACK COLLEGE & UNIVERSITY (HBCU)

FOR LOUISVILLE?

30% of all African American Teachers

60% of all African American Lawyers

60% of all African American Doctors

Came from an HBCU.

WHY AN HISTORICALLY BLACK COLLEGE & UNIVERSITY (HBCU)

FOR LOUISVILLE?

1.

2.

3.

WHY AN HISTORICALLY BLACK COLLEGE & UNIVERSITY (HBCU)

FOR LOUISVILLE?

- 1. No Cultural Barriers for Students to overcome.**
- 2.**
- 3.**

WHY AN HISTORICALLY BLACK COLLEGE & UNIVERSITY (HBCU)

FOR LOUISVILLE?

- 1. No Cultural Barriers for Students to overcome.**
- 2. Greater Opportunities to experience leadership.**
- 3.**

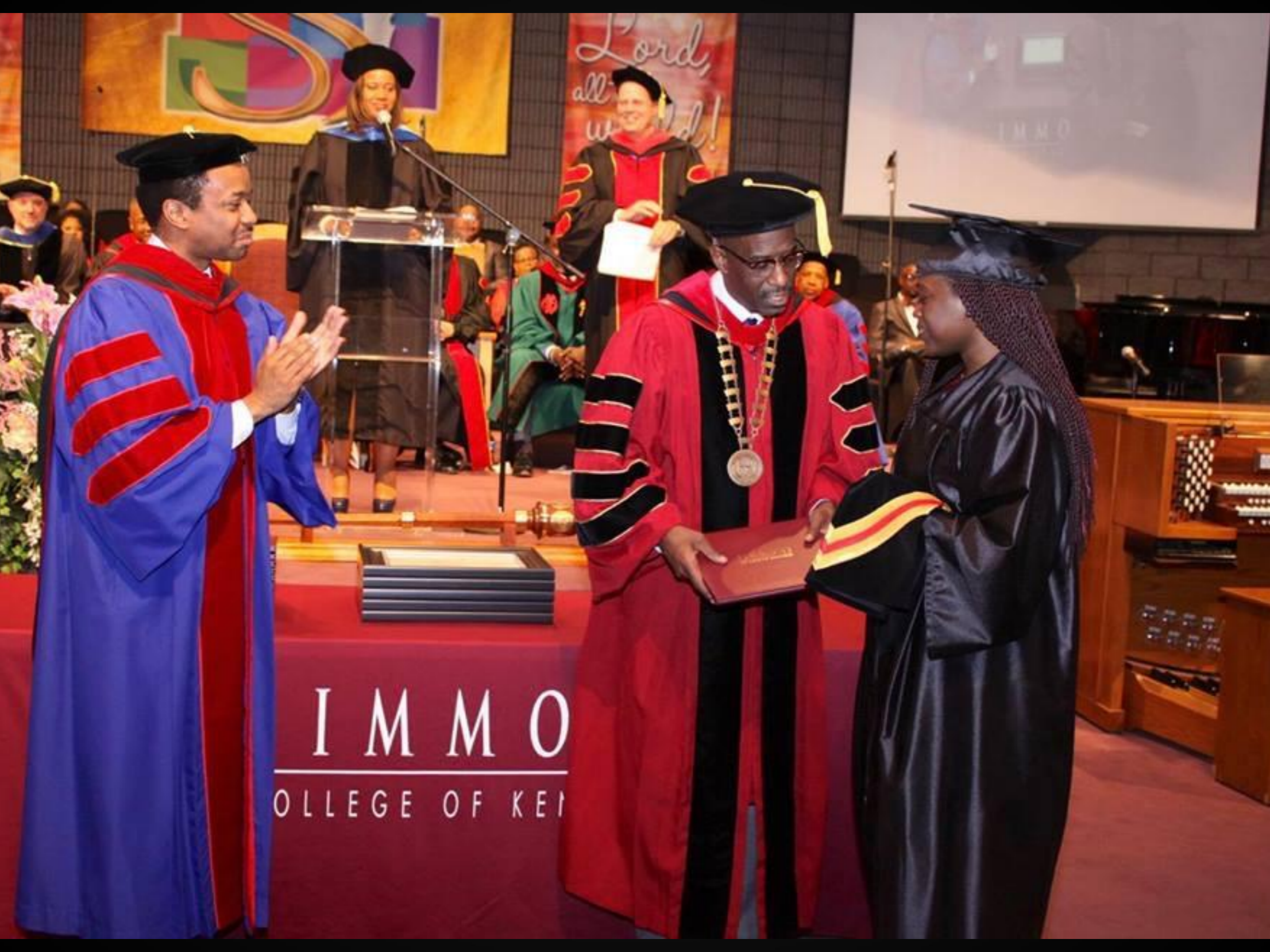
WHY AN HISTORICALLY BLACK COLLEGE & UNIVERSITY (HBCU)

FOR LOUISVILLE?

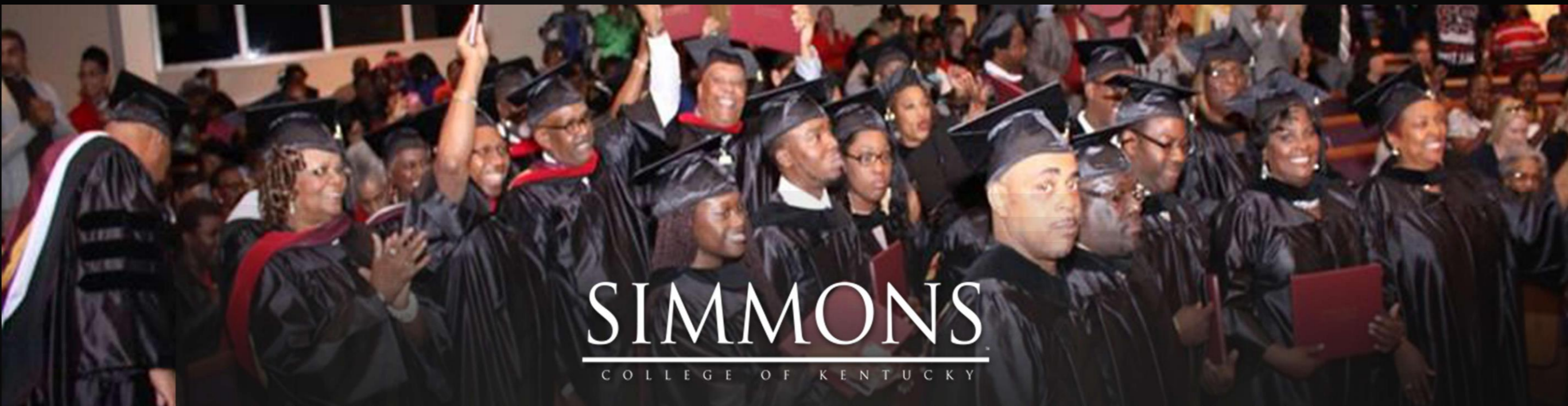
- 1. No Cultural Barriers for Students to overcome.**
- 2. Greater Opportunities to experience leadership.**
- 3. Faculty and Administration are sensitive to the markers of Student success.**







IMMO
COLLEGE OF KEI



SIMMONS

COLLEGE OF KENTUCKY

STATISTICS ON THE GRADUATING CLASS OF 2016 OF SIMMONS COLLEGE OF KENTUCKY

67%

FIRST
GENERATION
COLLEGE
STUDENTS

33%

HAD
PARENTS
WHO DID NOT
GRADUATE
FROM
HIGH SCHOOL

78%

ARE LIVING
AT OR
BELOW
POVERTY
LEVEL

67%

ARE
PARENTS

44%

ARE CARING
FOR A
DEPENDENT
AT HOME

44%

HAVE BEEN
DIAGNOSED
WITH A
DISABILITY OR
IMPAIRMENT
(MOBILITY,
LEARNING,
OR OTHER)

33%

WORKED
AT LEAST
35 HOURS
PER WEEK
DURING THE
SEMESTER

33%

HAVE BEEN
INCARCERATED

22%

HAVE BEEN
HOMELESS
FOR MORE
THAN FIVE
CONSECUTIVE
DAYS

100%

GRADUATED
WITH NO
STUDENT
LOAN DEBT

A challenging demographic for college enrollment is among African American males. Simmons has the distinction of 60% African American male enrollment.

MISSION STATEMENT

Simmons College of Kentucky is an institution of higher education dedicated to educating people in the urban context through strong academic and professional programs in order that they may become productive citizens and agents of change in society.

COREVALUES

ACCESS + QUALITY

Simmons will provide an equal educational opportunity to increasing numbers of students from underserved and un-served populations residing primarily among the economically and socially bypassed in the Metro Louisville Community.

COREVALUES

LEADERSHIP

Simmons will stimulate, initiate, and implement programs and services to both inspire and guide its students, faculty, and staff in developing their self-confidence, self-discipline, and self-empowerment to become productive leaders.

COREVALUES

RELEVANCE

Simmons will respond to the evolving needs of the economic and political culture— highly literate, well-spoken, technologically competent graduates educated to excel in the 21st century workforce.

COREVALUES

DIVERSITY

Simmons will sustain and strengthen its commitment to recruit, enroll, educate, and graduate students and to employ faculty and staff that represent a diverse cross-section of the community.

COREVALUES

SOCIAL RESPONSIBILITY

Simmons will promote active participation in constructive social exchange through volunteerism, leadership and civic action on the part of its students students, faculty, and staff.



THE NATIONAL BAPTIST CONVENTION OF AMERICA, INTERNATIONAL, INC.

- **The NBCA, Int'l is moving its headquarters to Louisville on the campus of Simmons College of Kentucky.**
- **Simmons has been named the educational provider of choice for the NBCA, Int'l.**
- **The NBCA, Int'l. has 3.2 million members.**
- **Over the next four years, the NBCA Int'l will bring 4 conventions to Louisville with an estimated economic impact of over \$7,000,000.**



THE FULL GOSPEL BAPTIST CHURCH **FELLOWSHIP INTERNATIONAL**

- **Simmons College of Kentucky has been named the educational provider for the Full Gospel Baptist Church Fellowship, International.**







PNBC

PROGRESSIVE NATIONAL
BAPTIST CONVENTION, INC

THE PROGRESSIVE NATIONAL BAPTIST CONVENTION

- **The Progressive National Baptist Convention has named President Kevin W. Cosby as “Educator of the Year” for 2016.**



-  Current Simmons buildings
-  Potential buildings for acquisition
-  Potential campus expansion
-  Athletic Facilities

