

**REFERENCE NOTES**

- A. REFER TO DESIGN STANDARDS "SITE & BUILDING EXTERIOR" CHAPTER FOR MAIN REQUIREMENTS RELATED TO THIS SHEET. ARCHITECT IS RESPONSIBLE FOR DESIGNING PROJECT IN ACCORDANCE WITH THE ENTIRE DESIGN STANDARDS.
- B. REFER TO EXTERIOR FINISH INDEX FOR MATERIALS AND COLORS; AND ALSO FOR TYPICAL FINISHES FOR EXTERIOR ELEMENTS SUCH AS TYPICAL LOUVER COLOR, DOOR FRAMES, PORTE COCHERE AND CANOPY STRUCTURE FINISHES, ETC.
- C. REFER TO THE EXTERIOR SIGNAGE SPECIFICATIONS FOR REQUIREMENTS RELATED TO SIGNAGE SHOWN ON THIS SHEET.

These design guidelines and all materials, procedures, systems and content herein contained or depicted (the "Design Guidelines") have been prepared for and/or developed by Marriott International, Inc. or its affiliate ("Marriott"), and are the sole and exclusive property of Marriott, which owns all right, title and interest therein, including all copyright, and which reserves all rights herein. All contents should be used only as authorized by Marriott and should not be copied either in whole or in part without its written consent.

FAIRFIELD INN & SUITES BY MARRIOTT  
 Marriott International Inc.  
 10400 Fernwood Road  
 Bethesda, MD 20817  
 (301) 380-3000

**GENERAL NOTES**

- 1. BUILDING ELEVATIONS ARE APPROXIMATE AND WILL VARY BASED ON STRUCTURAL SYSTEM.
- 2. PROVIDE CONTRACTOR WITH COLOR PRINTS OF ELEVATIONS FOR ADDITIONAL CLARITY.
- 3. CONTINUE FINISH TO INSIDE CORNER VERSUS FINISH TRANSITIONS AT OUTSIDE CORNER.
- 4. ALL DOWNSPOUTS MUST HAVE CLEANOUTS.
- 5. PROVIDE INTERNAL DOWNSPOUTS, GUTTERS, ROOF DRAINS AND OVERFLOWS AS REQUIRED FOR LOCAL RAINFALL. PROVIDE SECONDARY OVERFLOWS TO DAYLIGHT IN AREAS THAT WILL NOT DRAIN ACROSS WALKING SURFACES.
- 6. IF EQUIPMENT IS LOCATED ON THE ROOF, SCREEN EQUIPMENT SO THAT IT IS NOT VISIBLE TO THE GUEST AT GRADE LEVEL.

**CRITERIA NOTES**

CRITERIA NOTES ARE SHOWN CATEGORIZED BY DISCIPLINE AND COULD BE INTERPRETED TO APPLY TO MORE THAN ONE DISCIPLINE. FOR EFFICIENCY, NOTES ARE ONLY SHOWN UNDER ONE PREDOMINANT DISCIPLINE. CONSULTANTS SHOULD FAMILIARIZE THEMSELVES WITH ALL CRITERIA NOTES.

**ARCHITECTURE:**

- A1 TYPICAL GUESTROOM WINDOW @ GROUND FLOOR
- A2 TYPICAL GUESTROOM WINDOW FOR UPPER FLOOR
- A3 OPT 1 - PREFERRED LOCATION FOR OPTIONAL CHANNEL LETTER SIGNAGE ON SIDES OR ENDS OF BUILDING. LOCATE AS APPROPRIATE BASED ON BUILDING ORIENTATION. VERIFY PARAPET HEIGHT OR WALL CONSTRUCTION IN THE AREA SIGN TO BE INSTALLED WILL ALLOW FOR REAR ACCESS REQUIRED FOR CHANNEL LETTER INSTALLATION AND OPERATION.
- A4 OPT 2 - SECONDARY LOCATION FOR OPTIONAL SIGNAGE ON SIDES OR ENDS OF BUILDING. LOCATE AS APPROPRIATE. SEE NOTE A3 ABOVE FOR WALL REQUIREMENTS FOR CHANNEL LETTER INSTALLATION.
- A5 ALIGN AND COORDINATE REVEALS ALONG FACADE OF BUILDING. SEE ENLARGED DETAILS FOR DIMENSIONS.
- A6 CONTINUE REVEALS ALONG EXTENDED EDGE OF BUILDING.
- A7 SIDE ENTRY CANOPY. SEE ENLARGED ELEVATIONS FOR DETAILS.
- A8 ROOF SHADE CANOPY. SEE SHEET B202 FOR DETAILS.
- A9 WINDOW TO BE "FROSTED" TO CREATED VISUAL SCREEN TO LAUNDRY ROOM.
- A10 CHANNEL LETTER SIGNAGE AT FRONT OF BUILDING. SEE EXTERIOR SIGNAGE SPECIFICATIONS FOR REQUIREMENTS.
- A11 PROVIDE ADEQUATE BLOCKING BEHIND WALL FOR SIGNAGE. PROVIDE ACCESS FOR MOUNTING ELECTRICAL COMPONENTS AND MAKING FINAL ELECTRICAL CONNECTIONS. PROVIDE ADEQUATE DEDICATED CIRCUITRY BROUGHT TO SIGN LOCATION FROM ELECTRICAL PANEL.
- A12 SIGNAGE AT PORTE COCHERE. SEE EXTERIOR SIGNAGE SPECIFICATIONS FOR REQUIREMENTS.

**ENGINEERING:**

- E1 PTAC LOUVER INTEGRAL WITH WINDOW FRAME. FINISH TO MATCH WINDOW FRAME.

**EXTERIOR FINISH KEY**

- EF1 PEARLESCENT ACCENT EIFS FINISH
- EF2 DARK EIFS FINISH COLOR
- EF2a ACCENT EIFS COLOR
- EF2b DARK EIFS FINISH COLOR - TEXTURED
- EF3 STAIR TOWER EIFS COLOR
- EF4 MAIN BUILDING EIFS COLOR
- EF4a ACCENT EIFS COLOR
- EF5 EIFS COLOR AND TEXTURE AT FRONT AND REAR TOWERS
- ST1 CULTURED STONE
- ST2 COPING
- PT1 PAINT COLOR - ALUM. ROOF SHADE CANOPY & OTHER METAL COPINGS, FASCIAS, ETC.

**Fairfield**  
 BY MARRIOTT

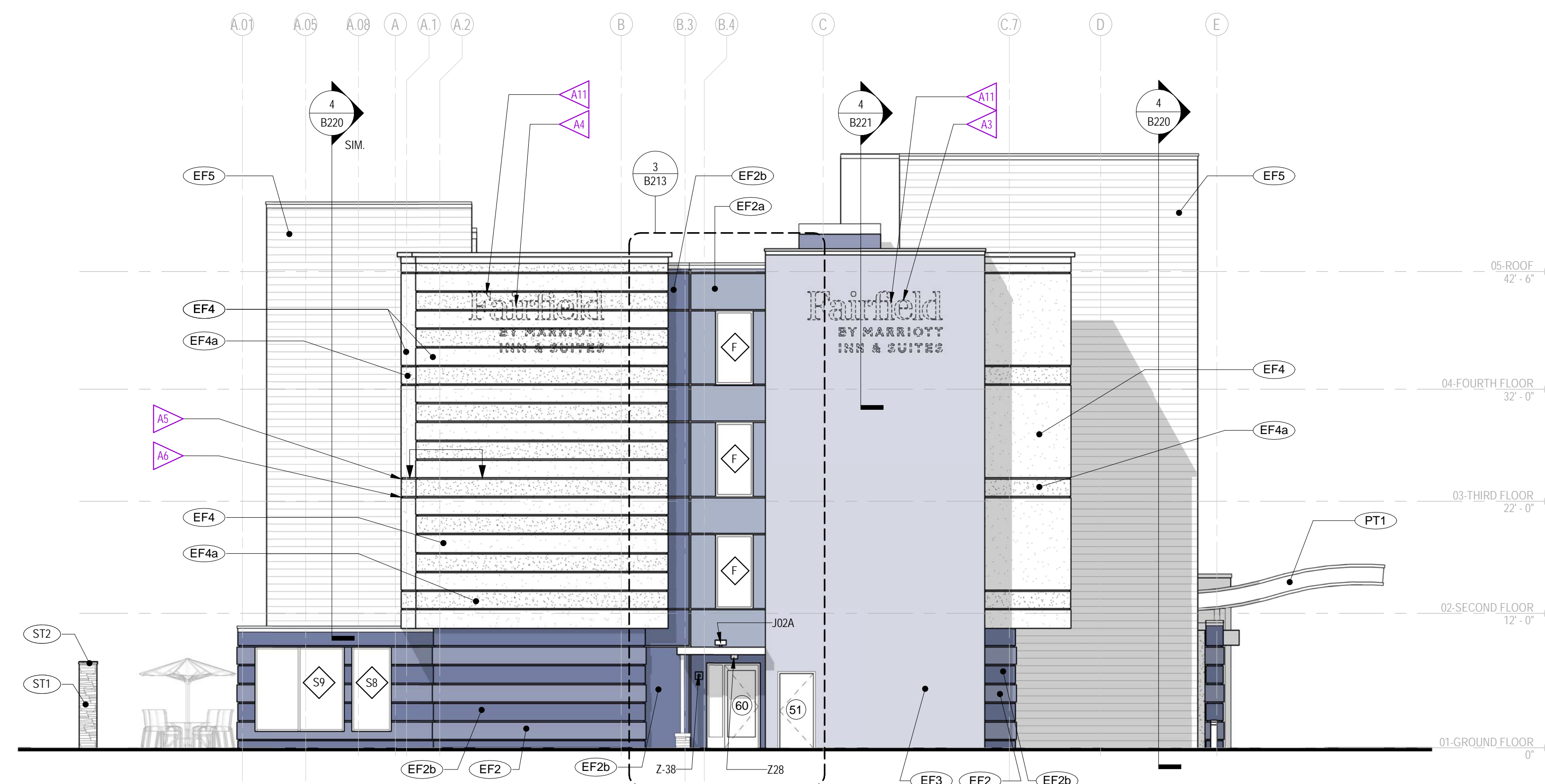
Design Guideline: Drawings  
 ISSUE DATE: 07-17-19  
 REVISION DATE:  
 GENERATION: 4.5 - 79 UNITS  
 DECOR: MODERN CALM

**EXTERIOR ELEVATIONS**

**B211**

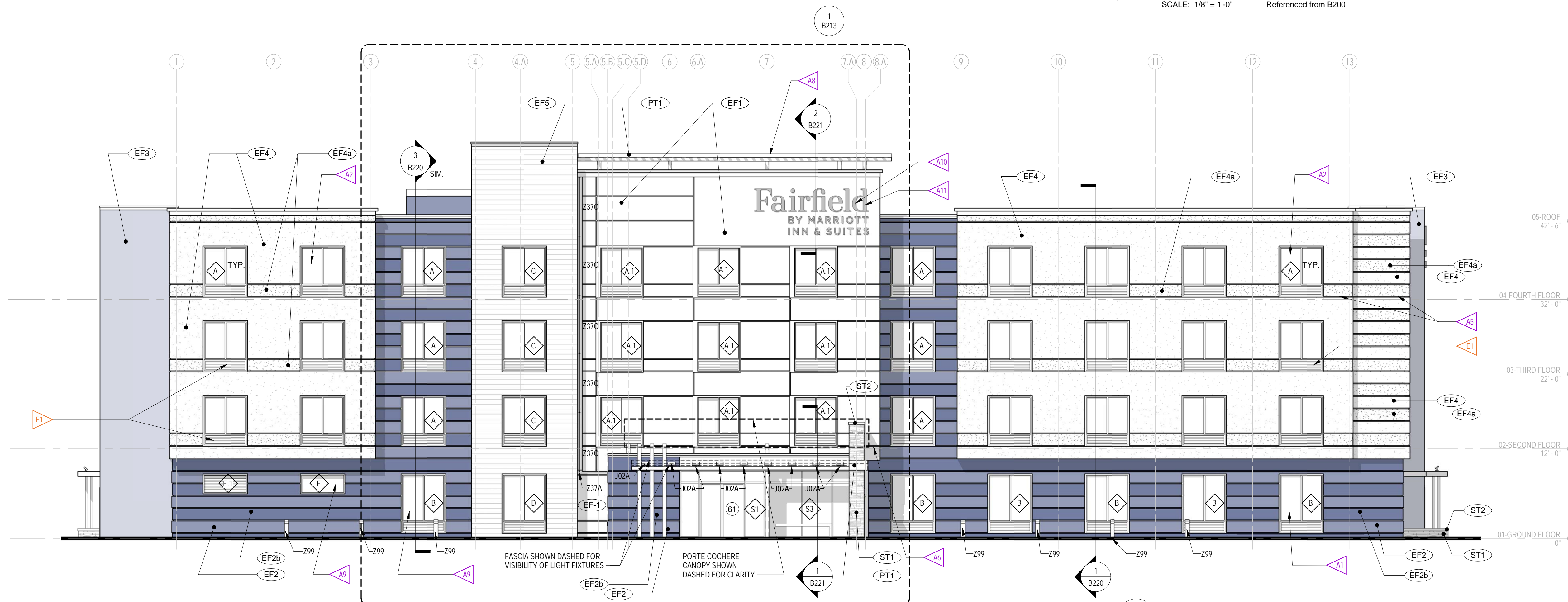
NOT FOR CONSTRUCTION

FILE NAME: 02-F-G4\_5-B211-Ext Elev-79



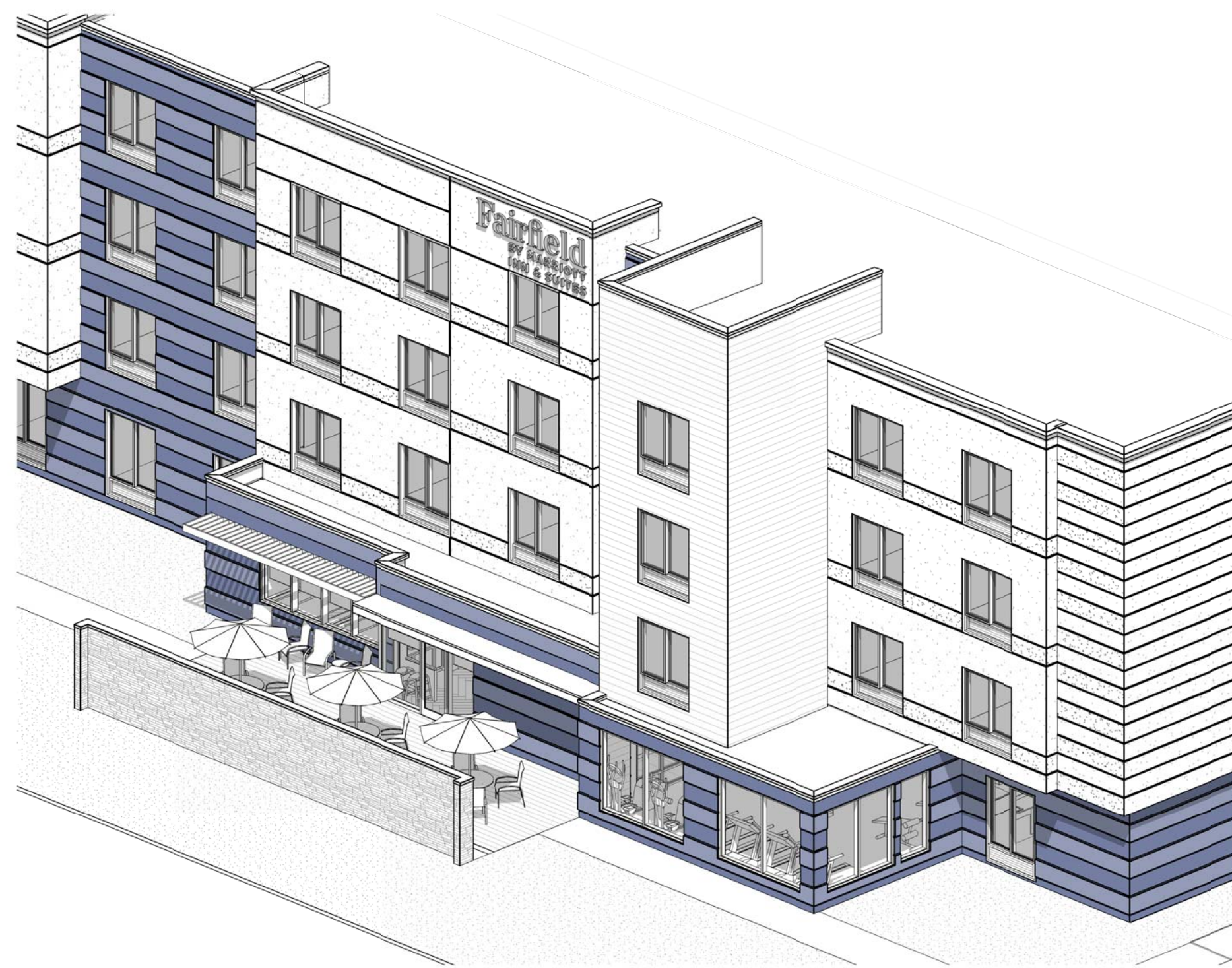
**2 SIDE ELEVATION WEST - NO POOL CONDITION**

SCALE: 1/8" = 1'-0" Referenced from B200

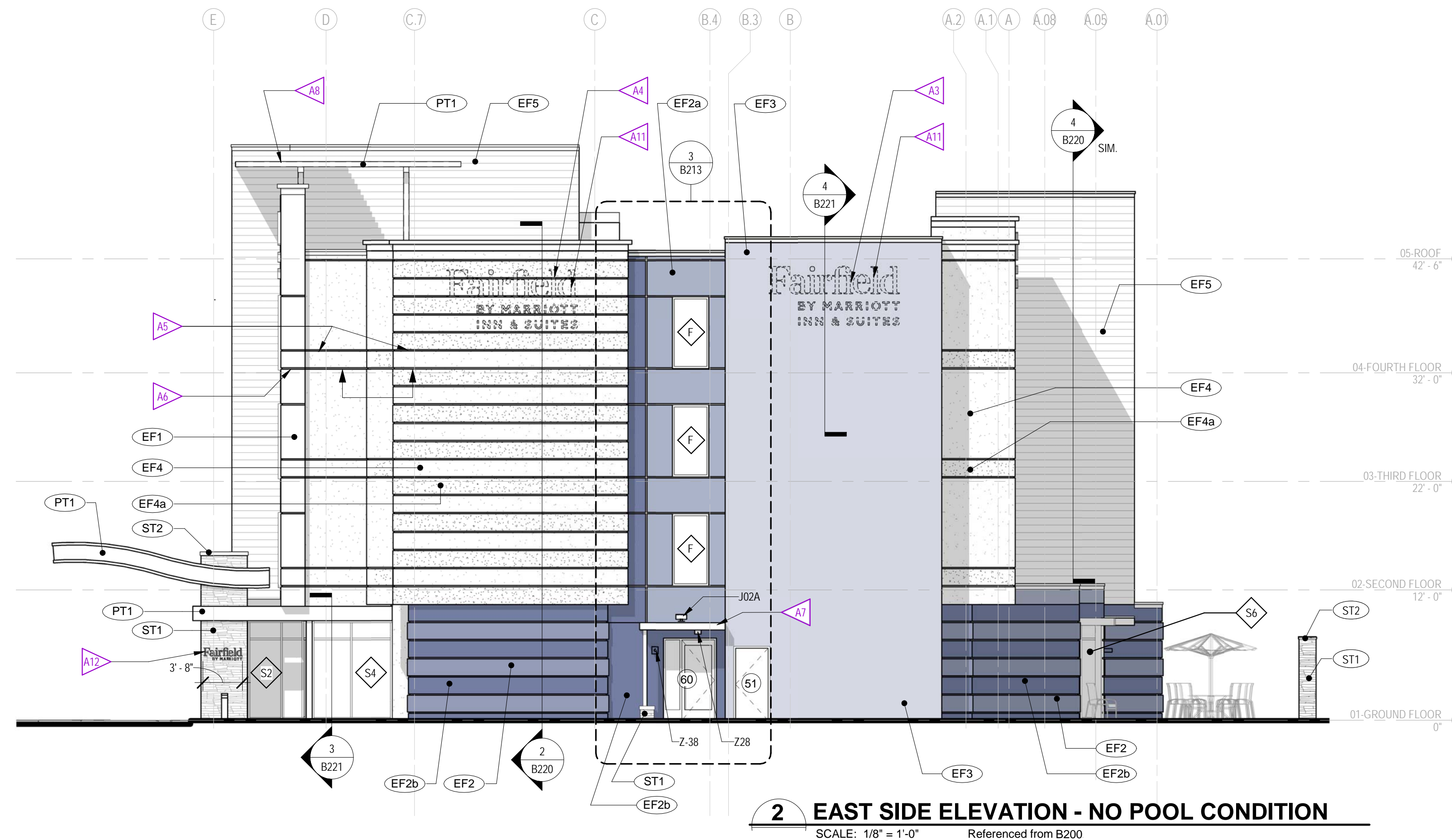


**1 FRONT ELEVATION**

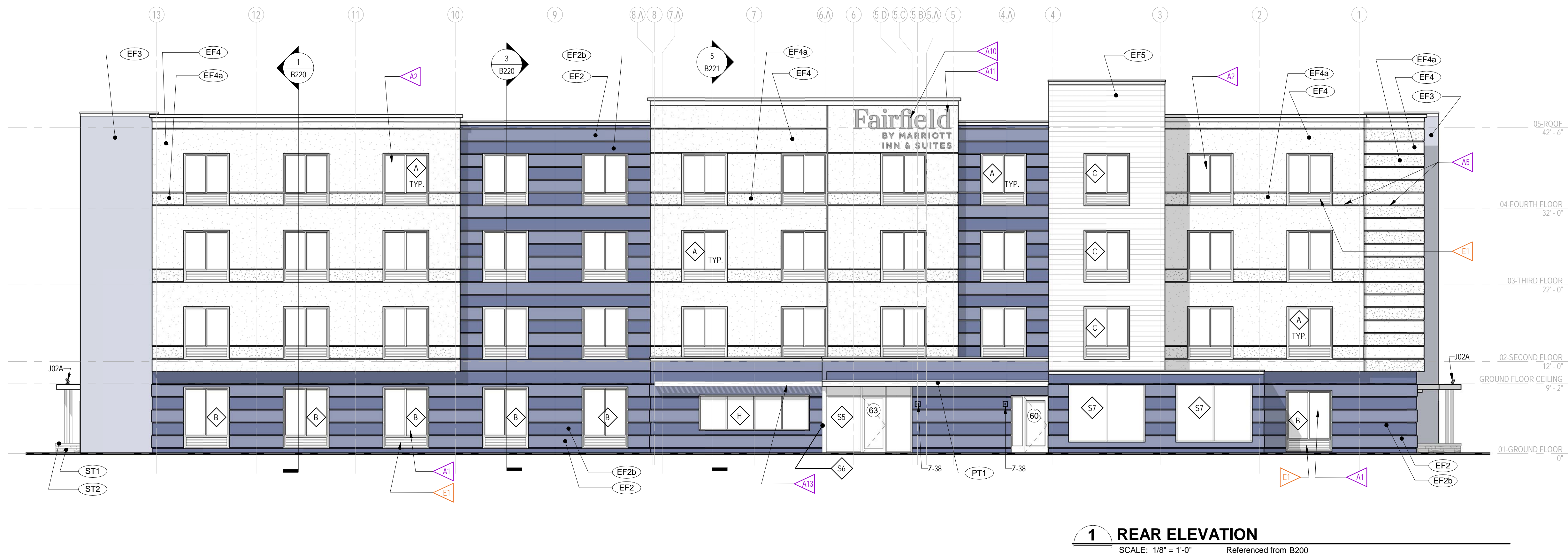
SCALE: 1/8" = 1'-0" Referenced from B200



**3 EXTERIOR 3D VIEW - NO POOL CONDITION**  
SCALE:



**2 EAST SIDE ELEVATION - NO POOL CONDITION**  
SCALE: 1/8" = 1'-0" Referenced from B200



**1 REAR ELEVATION**  
SCALE: 1/8" = 1'-0" Referenced from B200

**REFERENCE NOTES**

- A. REFER TO DESIGN STANDARDS "SITE & BUILDING EXTERIOR" CHAPTER FOR MAIN REQUIREMENTS RELATED TO THIS SHEET. ARCHITECT IS RESPONSIBLE FOR DESIGNING PROJECT IN ACCORDANCE WITH THE ENTIRE DESIGN STANDARDS.
- B. REFER TO EXTERIOR FINISH INDEX FOR MATERIALS AND COLORS; AND ALSO FOR TYPICAL FINISHES FOR EXTERIOR ELEMENTS SUCH AS TYPICAL LOUVER COLOR, DOOR FRAMES, PORTE COCHERE AND CANOPY STRUCTURE FINISHES, ETC.
- C. REFER TO THE EXTERIOR SIGNAGE SPECIFICATIONS FOR REQUIREMENTS RELATED TO SIGNAGE SHOWN ON THIS SHEET.

**GENERAL NOTES**

- 1. BUILDING ELEVATIONS ARE APPROXIMATE AND WILL VARY BASED ON STRUCTURAL SYSTEM.
- 2. PROVIDE CONTRACTOR WITH COLOR PRINTS OF ELEVATIONS FOR ADDITIONAL CLARITY.
- 3. CONTINUE FINISH TO INSIDE CORNER VERSUS FINISH TRANSITIONS AT OUTSIDE CORNER.
- 4. ALL DOWNSPOUTS MUST HAVE CLEANOUTS.
- 5. PROVIDE INTERNAL DOWNSPOUTS, GUTTERS, ROOF DRAINS AND OVERFLOWS AS REQUIRED FOR LOCAL RAINFALL. PROVIDE SECONDARY OVERFLOWS TO DAYLIGHT IN AREAS THAT WILL NOT DRAIN ACROSS WALKING SURFACES.
- 6. IF EQUIPMENT IS LOCATED ON THE ROOF, SCREEN EQUIPMENT SO THAT IT IS NOT VISIBLE TO THE GUEST AT GRADE LEVEL.

**CRITERIA NOTES**

CRITERIA NOTES ARE SHOWN CATEGORIZED BY DISCIPLINE AND COULD BE INTERPRETED TO APPLY TO MORE THAN ONE DISCIPLINE. FOR EFFICIENCY, NOTES ARE ONLY SHOWN UNDER ONE PREDOMINANT DISCIPLINE. CONSULTANTS SHOULD FAMILIARIZE THEMSELVES WITH ALL CRITERIA NOTES.

- ARCHITECTURE:**
- A1 TYPICAL GUESTROOM WINDOW @ GROUND FLOOR
  - A2 TYPICAL GUESTROOM WINDOW FOR UPPER FLOOR
  - OPT 1 - PREFERRED LOCATION FOR OPTIONAL CHANNEL LETTER SIGNAGE ON SIDES OR ENDS OF BUILDING. LOCATE AS APPROPRIATE BASED ON BUILDING ORIENTATION. VERIFY PARAPET HEIGHT OR WALL CONSTRUCTION IN THE AREA SIGN TO BE INSTALLED WILL ALLOW FOR REAR ACCESS REQUIRED FOR CHANNEL LETTER INSTALLATION AND OPERATION.
  - OPT 2 - SECONDARY LOCATION FOR OPTIONAL SIGNAGE ON SIDES OR ENDS OF BUILDING. LOCATE AS APPROPRIATE AND SEE NOTE A3 ABOVE FOR WALL REQUIREMENTS FOR CHANNEL LETTER INSTALLATION.
  - A5 ALIGN AND COORDINATE REVEALS ALONG FACADE OF BUILDING. SEE ENLARGED DETAILS FOR DIMENSIONS.
  - A6 CONTINUE REVEALS ALONG EXTENDED EDGE OF BUILDING.
  - A7 SIDE ENTRY CANOPY. SEE ENLARGED ELEVATIONS FOR DETAILS.
  - A8 ROOF SHADE CANOPY. SEE SHEET B202 FOR DETAILS.
  - A9 WINDOW TO BE "FROSTED" TO CREATED VISUAL SCREEN TO LAUNDRY ROOM.
  - A10 CHANNEL LETTER SIGNAGE AT FRONT AND REAR OF BUILDING. SEE EXTERIOR SIGNAGE SPECIFICATIONS FOR REQUIREMENTS.
  - A11 PROVIDE ADEQUATE BLOCKING BEHIND WALL FOR SIGNAGE. PROVIDE ACCESS FOR MOUNTING ELECTRICAL COMPONENTS AND MAKING FINAL ELECTRICAL CONNECTIONS. PROVIDE ADEQUATE DEDICATED CIRCUITRY BROUGHT TO SIGN LOCATION FROM ELECTRICAL PANEL.
  - A12 SIGNAGE AT PORTE COCHERE. SEE EXTERIOR SIGNAGE SPECIFICATIONS FOR REQUIREMENTS.
  - A13 LOUVERED SUNSHADE.

**ENGINEERING:**

- E1 PTAC LOUVER INTEGRAL WITH WINDOW FRAME. FINISH TO MATCH WINDOW FRAME.

**EXTERIOR FINISH KEY**

EF1	PEARLESCENT ACCENT EIFS FINISH
EF2	DARK EIFS FINISH COLOR
EF2a	ACCENT EIFS COLOR
EF2b	DARK EIFS FINISH COLOR - TEXTURED
EF3	STAIR TOWER EIFS COLOR
EF4	MAIN BUILDING EIFS COLOR
EF4a	ACCENT EIFS COLOR
EF5	EIFS COLOR AND TEXTURE AT FRONT AND REAR TOWERS
ST1	CULTURED STONE
ST2	COPING
PT1	PAINT COLOR - ALUM. ROOF SHADE CANOPY & OTHER METAL COPINGS, FASCIAS, ETC.

These design guidelines and all materials, procedures, systems and content herein contained or depicted (the "Design Guidelines") have been prepared for and/or developed by Marriott International, Inc. or its affiliate ("Marriott"), and are the sole and exclusive property of Marriott, which owns all right, title and interest therein, including all copyright, and which reserves all rights herein. All contents should be used only as authorized by Marriott and should not be copied either in whole or in part without its written consent.

FAIRFIELD INN & SUITES BY MARRIOTT  
Marriott International Inc.  
10400 Fernwood Road  
Bethesda, MD 20817  
(301) 380-3000

**Fairfield**  
BY MARRIOTT

Design Guideline: Drawings  
ISSUE DATE: 07-17-19  
REVISION DATE:  
GENERATION: 4.5 - 79 UNITS  
DECOR: MODERN CALM

**EXTERIOR ELEVATIONS**

**B212**  
NOT FOR CONSTRUCTION