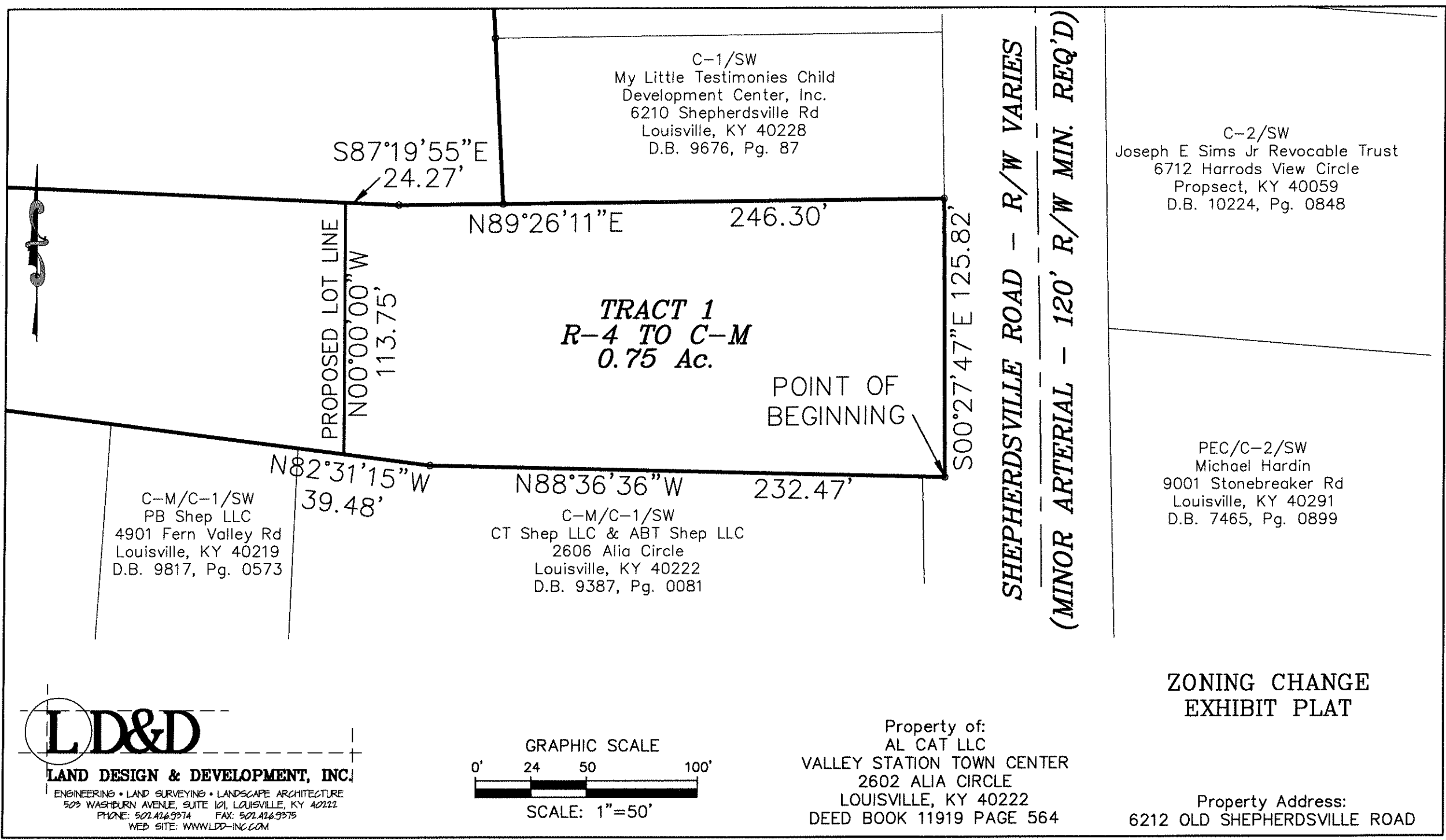


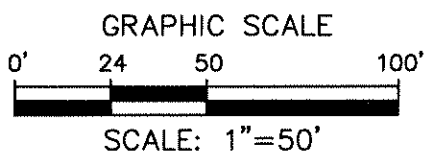
**R-4 to C-M REZONING DESCRIPTION
FOR
6212 OLD SHEPHERDSVILLE RD, LOUISVILLE, KY 40228
(June 14, 2021)**

BEGINNING at a point along the west right-of-way line of Shepherdsville Road, said point being a common corner with the northeast corner of Revised Tract 3 of the Minor Subdivision Plat approved by Louisville and Jefferson County Planning Commission under Docket Number 157-99, and as recorded by Deed of record in Deed Book 7291, Page 496, in the Office of the Clerk of Jefferson County, Kentucky; thence leaving said west right-of-way line **N88°36'36"W, 232.47'** to a point; thence **N82°31'15"W, 39.48'** to a point; thence **N00°00'00"W, 113.75'** to a point; thence **S87°19'55"E, 24.27'** to a point ; thence **N89°26'11"E, 246.30'** to a point along the aforementioned west right-of-way line of Shepherdsville Road; thence with said west right-of-way line **S00°27'47"E, 125.82'** to the point of **BEGINNING**, containing 0.75 acres.

G:\Current Projects\2021\DWG\Planning\2021-REZONING-EXHIBIT\16-21.dwg, 8/16/2021 11:44:35 AM, DWG To PDF.pc3, 1:1



LD&D
LAND DESIGN & DEVELOPMENT, INC.
 ENGINEERING • LAND SURVEYING • LANDSCAPE ARCHITECTURE
 503 WASHBURN AVENUE, SUITE 101, LOUISVILLE, KY 40222
 PHONE: 502.426.9374 FAX: 502.426.9375
 WEB SITE: WWW.LDD-INC.COM



Property of:
 AL CAT LLC
 VALLEY STATION TOWN CENTER
 2602 ALIA CIRCLE
 LOUISVILLE, KY 40222
 DEED BOOK 11919 PAGE 564

ZONING CHANGE EXHIBIT PLAT

Property Address:
 6212 OLD SHEPHERDSVILLE ROAD

DATE 08/16/21

JOB #20271