

# 23-STRCLOSURE-0005

## Payne Street Alley Closure



Louisville Metro Land Development & Transportation  
Committee

John Michael Lawler, Planner I

March 9, 2023

# Request

- Closure of public right-of-way



# Site Context



# Case Summary

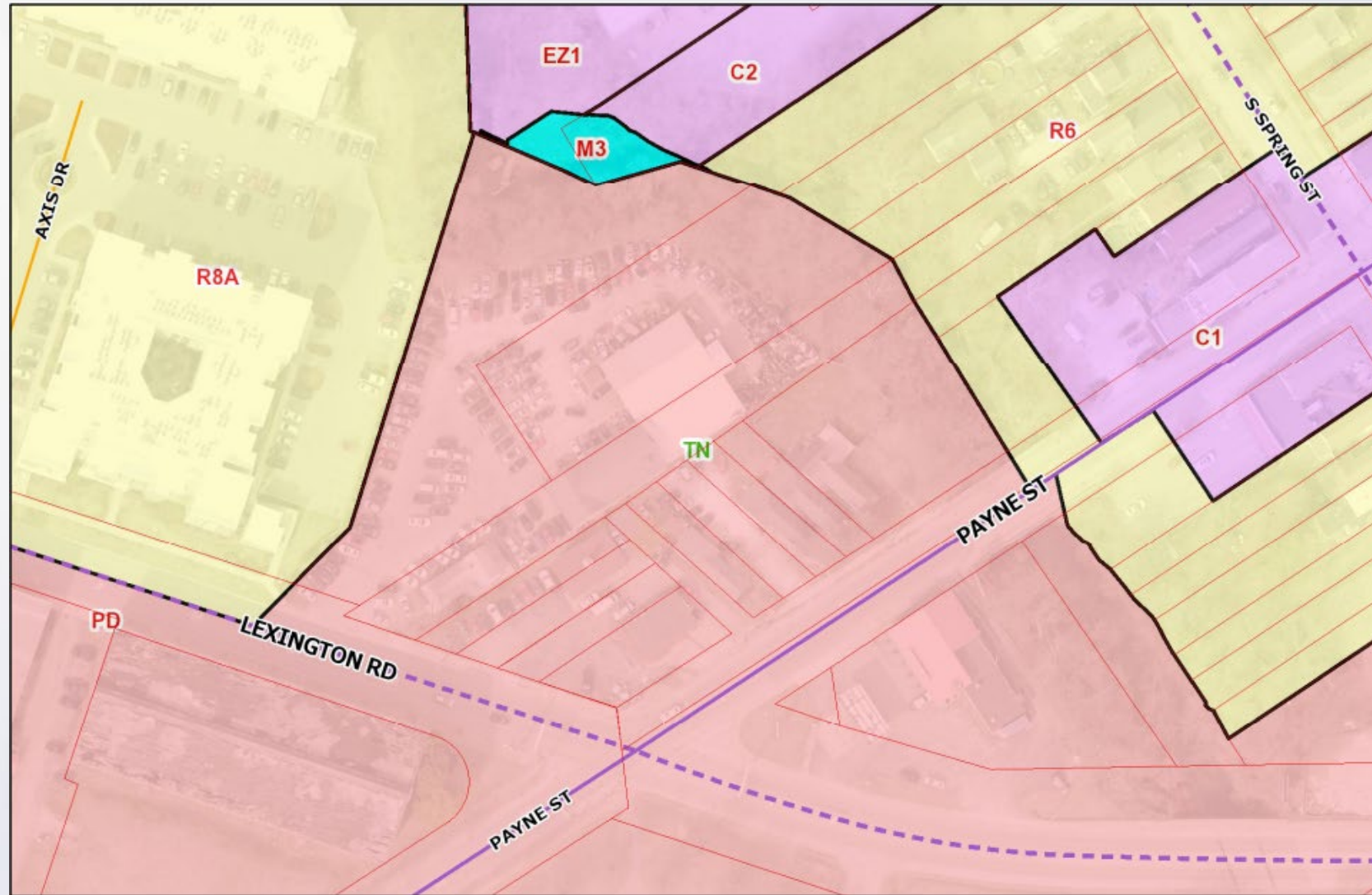
- The proposal is to close the entire 129.52' long unnamed, partially improved alley totaling 0.06 acres that runs northwest, perpendicular to Payne St.
- The intent behind the closure is to incorporate the alley into the site that occupies the north corner of Lexington & Payne.

# Technical Review

- The proposed closure will maintain public facilities. All affected agencies have agreed to the closure or declined to comment.



# Zoning/Form Districts



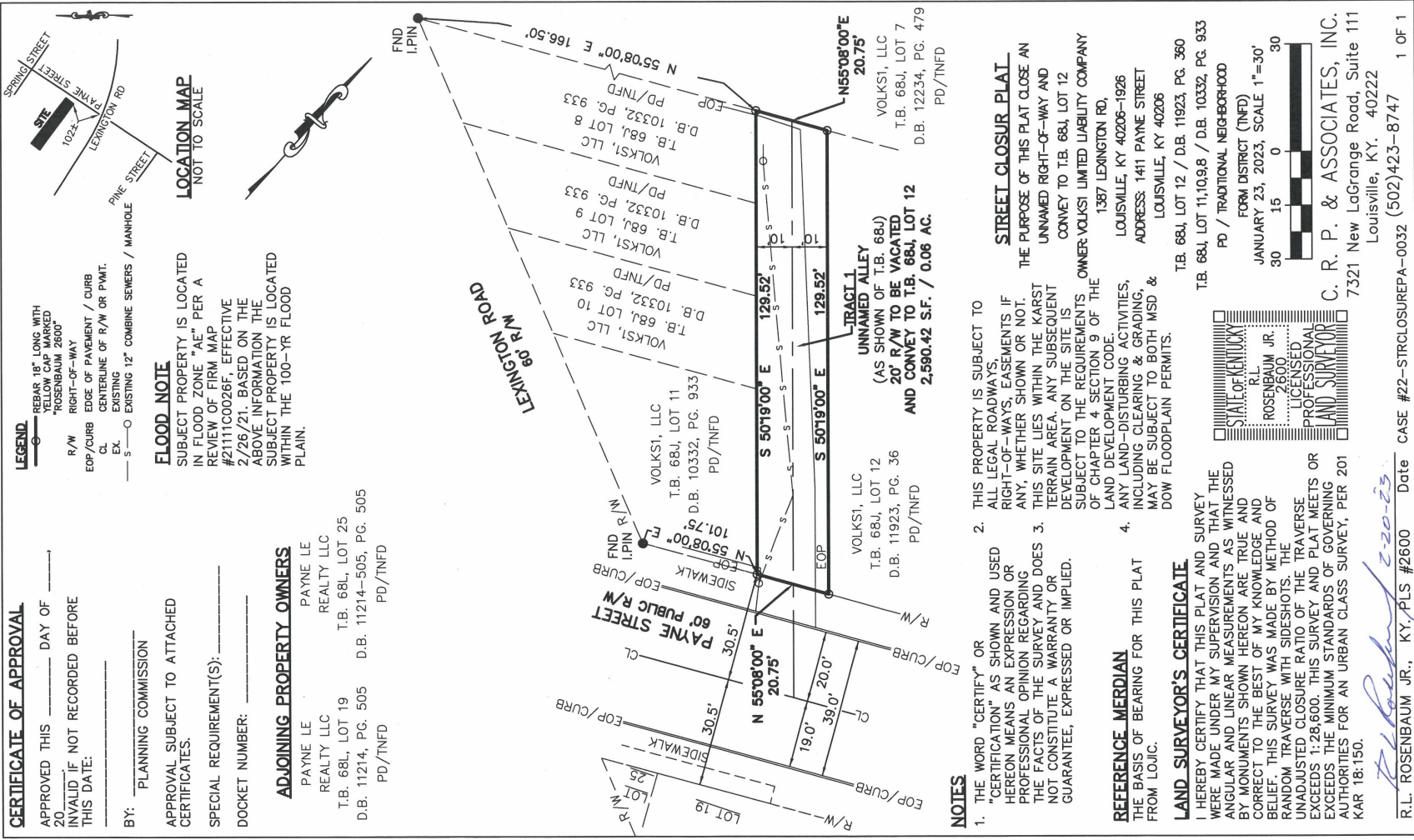


# Aerial Photo





# Applicant's Development Plan





# Site from Lexington Rd





# Site from Payne St





# Adjacent Site to the West



# Staff Finding

- The proposal is ready to be put on the consent agenda at the next Planning Commission.



# Required Actions

- Place on the consent agenda at the next available Planning Commission.