

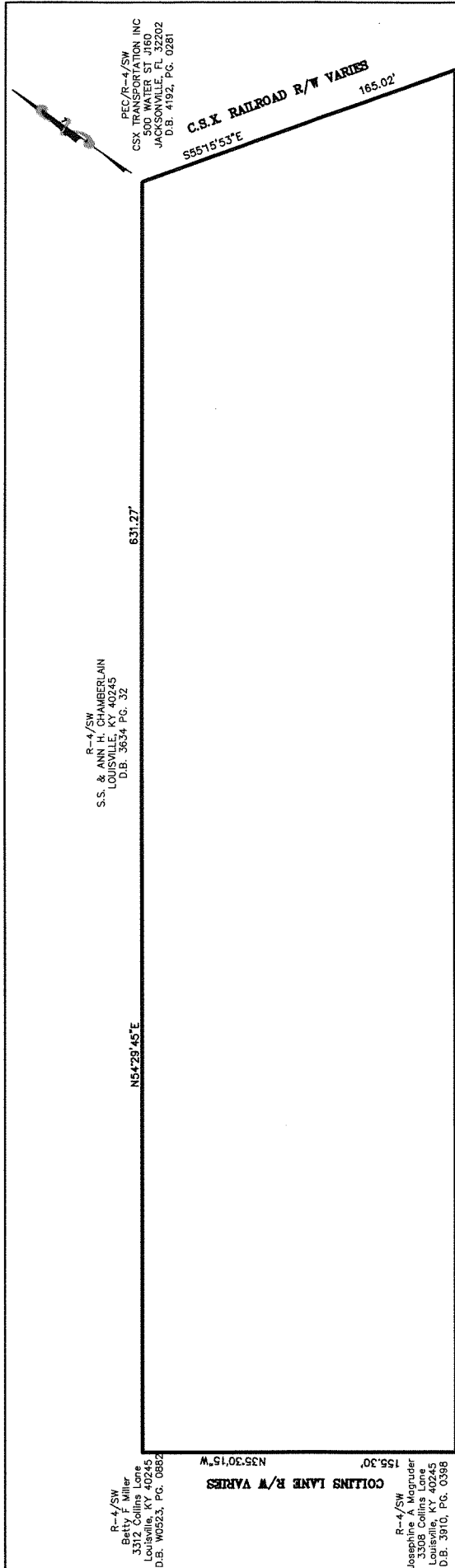
**Written Description for Rezoning
Tony's Wrecker Service
3311 Collins Lane
Case: 13zone1031
(August 11, 2014)**

Beginning at a point in the northerly right-of-way line of Collins Lane and being the northwest property corner of a tract belonging to IAN, LLC by D.B. 7592, Page 796 of record in the Jefferson County Kentucky Clerk's Office; thence with said right-of-way N 35°30'15" W 155.30 feet to a point in the southwesterly property corner of a tract belonging to S.S. and Ann H. Chamberlain by D.B. 3634, Page 32 and being of record in the aforementioned Clerk's Office; thence leaving said right-of-way N 54°29'45" E 631.27 feet to a point; thence S 55°15'53" E 165.02 feet to a point; thence S 54°29'45" W 687.06 feet to the Point of Beginning and containing 2.35 acres more or less and being the same property deeded to Jerry L. and Martha Shade by D.B. 10121, Page 341 of record in the aforementioned Clerk's Office.

*Legal matches
survey
8/29/14
DBW*

RECEIVED

AUG 18 2014
PLANNING &
DESIGN SERVICES



PEC/R-4/SW
 CSX TRANSPORTATION INC
 500 WATER ST
 JEFFERSONVILLE, KY 40202
 D.B. 4192, P.G. 0281

R-4/SW
 S.S. & ANN H. CHAMBERLAIN
 LOUISVILLE, KY 40245
 D.B. 3634 P.G. 32

R-4/SW
 Betty F. Miller
 3312 Collins Lane
 Louisville, KY 40245
 D.B. W0623, P.G. 0862

R-4/SW
 Josephine A. Magnuder
 1000 S. 10th
 Louisville, KY 40245
 D.B. 3910, P.G. 0398

PEC/SW
 HANLEY
 6060 DUTCHMAN LN STE 110
 LOUISVILLE, KY 40205
 D.B. 7592, P.G. 796
 (MODIFIED BY: D.B. 8752 P.G. 25)



RECEIVED

AUG 18 2014

PLANNING &
 DESIGN SERVICES

ZONING CHANGE
 EXHIBIT PLAT

Property of:
 JERRY L & MARTHA SCHADE
 1002 ROUND TABLE COURT
 LOUISVILLE, KENTUCKY 40222
 DEED BOOK 10121, PAGE 0341
 Property Address: 3311 COLLINS LANE
 CASE #13ZONE1031 8/11/14 #13107

LD&D
 LAND DESIGN & DEVELOPMENT, INC.
 ENGINEERING • LAND SURVEYING • LANDSCAPE ARCHITECTURE
 505 WASHINGTON AVENUE, SUITE 101, LOUISVILLE, KY 40212
 PHONE: 502.416.9714 FAX: 502.416.9715
 WEB SITE: WWW.LDD-INC.COM

137.0NE1031