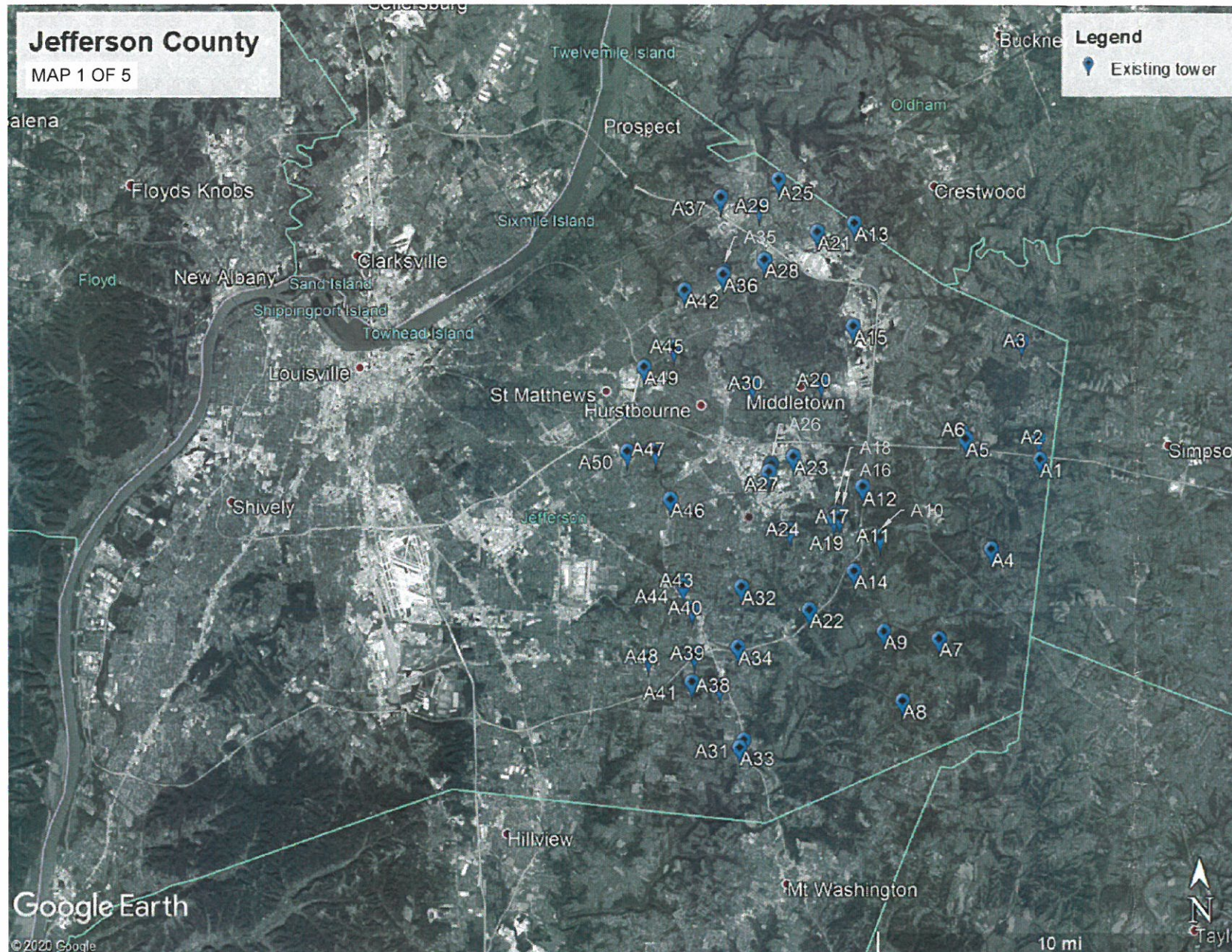


EXHIBIT K
GRID MAP

RECEIVED
FEB 10 2021
PLANNING & DESIGN
SERVICES

PRELIMINARY



Existing towers				
Label	FAA #	Tower Owner	Lat	Long
A1	1056245	EMKA Towers	38-12-53.0N	085-25-08.0W
A2	1207638	Crown Communications LLC	38-13-23.6N	085-25-10.8W
A3	1045583	Vertical Bridge CC AM, LLC	38-15-40.0N	085-25-43.0W
A4	1052936	Subcarrier Communications, Inc.	38-10-46.2N	085-26-38.8W
A5	1003523	STC Five LLC	38-13-22.0N	085-27-25.0W
A6	1035963	Crown Castle GT Company LLC	38-13-34.0N	085-27-34.0W
A7	1298022	PI Tower Development, LLC	38-08-39.2N	085-28-12.3W
A8	1296615	Capital Telecom Holdings LLC	38-07-11.4N	085-29-16.3W
A9	1023252	Pinnacle Towers LLC	38-08-49.8N	085-29-50.2W
A10	1053125	KOERBER, ARNOLD D: KOERBER, DORIS J DBA = CONCEPT COMMUNICATIONS	38-11-04.0N	085-29-57.0W
A11	1265118	Koerber, Arnold	38-11-04.0N	085-29-57.0W
A12	1297034	Horvath Towers III, LLC	38-12-14.5N	085-30-29.2W
A13	1035976	Crown Castle GT Company LLC	38-18-26.7N	085-30-43.6W
A14	1003522	STC Five LLC	38-10-15.0N	085-30-44.4W
A15	1036036	Crown Castle GT Company LLC	38-16-01.0N	085-30-46.0W
A16	1045579	iHeartMedia Entertainment, Inc.	38-11-37.0N	085-31-07.0W
A17	1045578	iHeartMedia Entertainment, Inc.	38-11-31.0N	085-31-11.0W
A18	1045580	iHeartMedia Entertainment, Inc.	38-11-38.0N	085-31-17.0W
A19	1045581	iHeartMedia Entertainment, Inc.	38-11-31.0N	085-31-21.0W
A20	1297555	American Towers LLC	38-14-44.2N	085-31-44.1W
A21	1059591	TOWERCOM SOUTHEAST	38-18-14.0N	085-31-51.0W
A22	1036039	Crown Castle GT Company LLC	38-09-20.2N	085-32-04.8W
A23	1235512	PTI US Towers I, LLC	38-12-56.8N	085-32-33.2W
A24	1258229	T-Mobile USA Tower LLC	38-11-12.9N	085-32-39.4W
A25	1258997	Louisville Metro Government Emergency Services P & B TOWERS LLC	38-19-28.2N	085-33-00.1W
A26	1061956	P & B TOWERS LLC	38-12-46.0N	085-33-13.0W
A27	1035959	Cellco Partnership	38-12-35.0N	085-33-17.0W
A28	1261277	SBA Monarch Towers I, LLC	38-17-34.6N	085-33-25.1W
A29	1043084	LOUISVILLE GAS AND ELECTRIC COMPANY	38-18-50.0N	085-33-34.0W
A30	1035969	Crown Castle GT Company LLC	38-14-39.7N	085-33-46.0W
A31	1261157	Louisville Metro Government Emergency Services	38-06-15.8N	085-34-01.4W
A32	1044926	Spectrum Mid-America, LLC	38-09-52.6N	085-34-05.6W
A33	1012158	STC Five LLC	38-06-05.2N	085-34-09.0W
A34	1262368	SBA Monarch Towers I, LLC	38-08-27.4N	085-34-11.9W
A35	1001080	Spectrum Mid-America, LLC	38-17-19.0N	085-34-37.0W
A36	1271873	Crown Castle South LLC	38-17-13.9N	085-34-38.7W
A37	1062060	Crown Communications LLC	38-19-02.9N	085-34-42.9W
A38	1232839	BellSouth Telecommunications, LLC	38-07-32.2N	085-34-44.2W
A39	1065847	Crown Communications LLC	38-08-18.0N	085-35-30.0W
A40	1002183	JEFFERSON COUNTY PUBLIC SCHOOLS	38-09-22.0N	085-35-34.0W
A41	1043317	Crown Castle South LLC	38-07-38.2N	085-35-34.5W
A42	1255871	T-Mobile USA Tower LLC	38-16-51.8N	085-35-47.9W
A43	1035973	Crown Castle GT Company LLC	38-10-01.0N	085-35-49.0W
A44	1056529	SBA Towers, LLC	38-09-54.7N	085-35-49.8W
A45	1002507	Crown Castle GT Company LLC	38-15-31.3N	085-36-06.9W
A46	1210648	Crown Castle South LLC	38-11-56.2N	085-36-13.4W
A47	1001806	Crown Castle GT Company LLC	38-13-06.0N	085-36-40.0W
A48	1035962	Crown Castle GT Company LLC	38-08-13.4N	085-36-52.9W
A49	1283869	Crown Castle South LLC	38-15-03.1N	085-37-01.3W
A50	1043316	Crown Castle South LLC	38-13-04.1N	085-37-31.1W

SUBMITTALS			
DATE	DESCRIPTION	REV	ISSUED BY
07/31/2020	FOR REVIEW	A	RM
10/14/2020	FOR REVIEW	B	RM

DRAWN BY: CTS
 CHECKED BY: CZB
 APPVD BY: RM
 MNS PROJECT NO: 21365

THE INFORMATION CONTAINED IN THESE DOCUMENTS IS PROPRIETARY BY NATURE. REPRODUCTION OR CAUSING TO BE REPRODUCED THE WHOLE OR ANY PART OF THESE DRAWINGS WITHOUT THE PERMISSION OF MASTEC NETWORK SOLUTIONS IS PROHIBITED.

PREPARED FOR:

PREPARED BY:

507 AIRPORT BLVD, SUITE 111
MORRISVILLE, NC 27560

SITE NAME:
HEADLEY HOLLOW

FA LOCATION:
11563658

SITE ADDRESS:
**4513 BLEVINS GAP ROAD
LOUISVILLE, KY 40272**

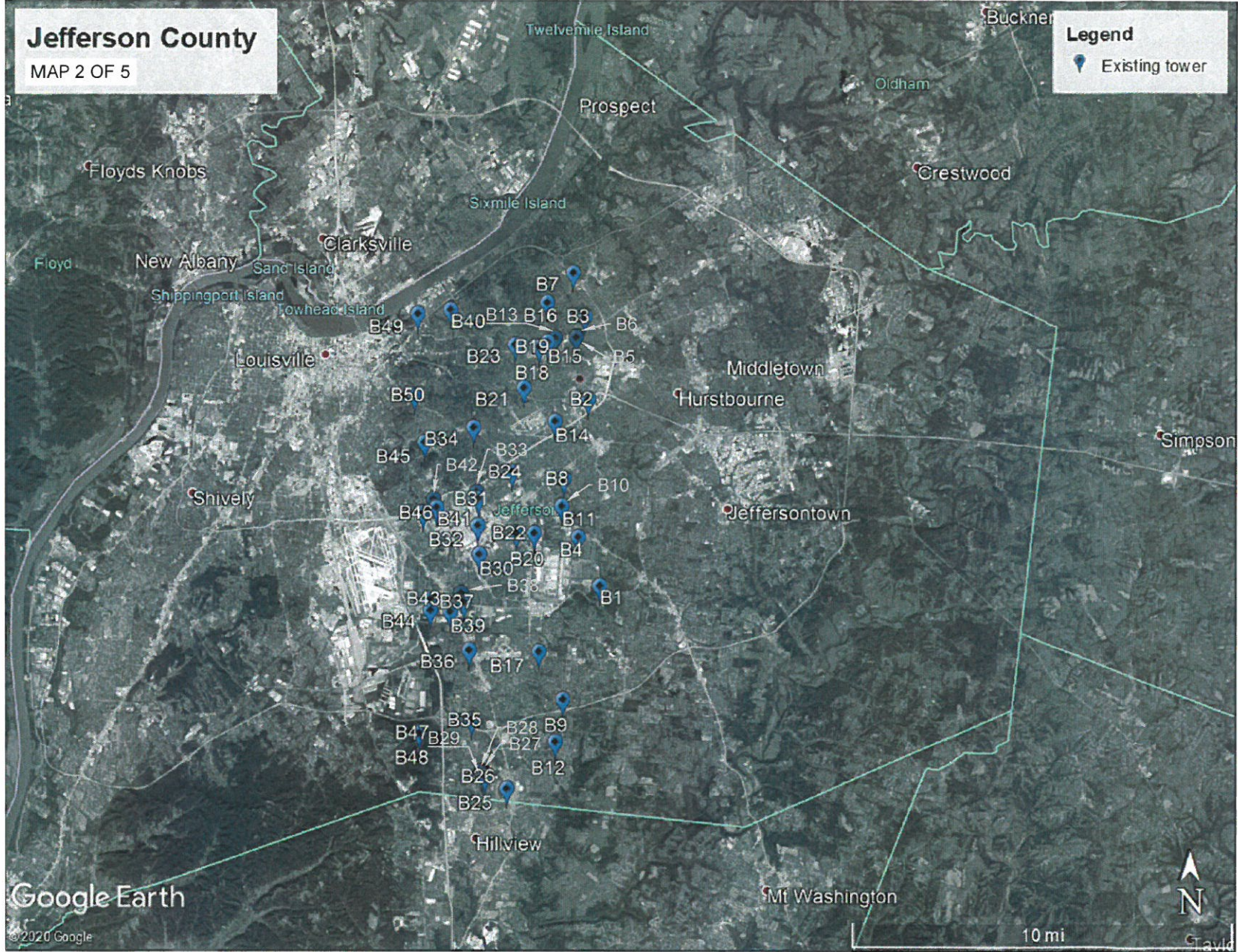
SHEET TITLE
TOWER COUNTY MAP

SHEET NUMBER
M-1

RECEIVED
 FEB 10 2021
 PLANNING & DESIGN
 SERVICES

21-CELL-0001

PRELIMINARY



Existing towers				
Label	FAA #	Tower Owner	Lat	Long
B1	1298049	Cellco Partnership	38-09-46.5N	085-37-34.1W
B2	1023280	Crown Castle South LLC	38-14-00.8N	085-37-54.1W
B3	1008395	LOUISVILLE GAS & ELECTRIC DBA = SPRINT PCS	38-15-54.0N	085-38-00.0W
B4	1043333	Crown Castle South LLC	38-10-53.0N	085-38-11.0W
B5	1016570	Crown Castle South LLC	38-15-27.0N	085-38-14.6W
B6	1035971	Crown Castle GT Company LLC	38-15-25.5N	085-38-15.0W
B7	1295404	Crown Castle GT Company LLC	38-16-53.7N	085-38-20.5W
B8	1255870	T-Mobile USA Tower LLC	38-12-12.5N	085-38-36.4W
B9	1059590	Pinnacle Towers LLC	38-07-12.0N	085-38-38.0W
B10	1004504	GTE MOBILNET DBA = CELLULAR ONE	38-11-35.0N	085-38-40.0W
B11	1036193	Crown Castle GT Company LLC	38-11-35.0N	085-38-40.0W
B12	1260948	T-Mobile USA Tower LLC	38-06-14.3N	085-38-51.1W
B13	1266884	St Matthews Fire Protection District	38-15-24.3N	085-38-51.9W
B14	1002082	JEWISH COMMUNITY FEDERATION OF LOUISVILLE DBA = SHALOM TOWER	38-13-31.0N	085-38-52.0W
B15	1057555	T-Mobile USA Tower LLC	38-15-19.0N	085-39-05.0W
B16	1254484	T-Mobile West Tower LLC	38-16-12.9N	085-39-05.8W
B17	1043325	Crown Castle South LLC	38-08-16.9N	085-39-19.6W
B18	1300720	CSX Transportation	38-15-12.6N	085-39-20.0W
B19	1300721	CSX Transportation	38-15-12.6N	085-39-20.0W
B20	1256328	T-Mobile South LLC	38-10-58.3N	085-39-27.9W
B21	1226930	Crown Castle South LLC	38-14-16.4N	085-39-46.3W
B22	1260274	SBA Monarch Towers I, LLC	38-10-58.2N	085-39-59.0W
B23	1284824	Apex Towers, LLC	38-15-15.3N	085-40-01.4W
B24	1210668	Cellco Partnership	38-12-21.6N	085-40-06.4W
B25	1275030	Crown Communication LLC	38-05-10.4N	085-40-14.5W
B26	1046079	UB Louisville, LLC	38-05-27.0N	085-40-52.0W
B27	1046077	UB Louisville, LLC	38-05-31.0N	085-40-55.0W
B28	1046078	UB Louisville, LLC	38-05-30.0N	085-40-56.0W
B29	1046080	UB Louisville, LLC	38-05-34.0N	085-40-59.0W
B30	1229118	American Towers LLC	38-10-29.3N	085-41-02.7W
B31	1000011	FIFTEEN TELECOMMUNICATIONS INC DBA = WKPC TV	38-11-45.0N	085-41-04.0W
B32	1263765	Louisville Gas & Electric Company KENTUCKY, COMMONWEALTH OF DBA = KY EMERGENCY WARNING SYSTEM KEWS	38-11-08.6N	085-41-05.3W
B33	1044803	Crown Castle GT Company LLC	38-13-22.3N	085-41-12.9W
B34	1036038	Crown Castle GT Company LLC	38-06-43.7N	085-41-15.2W
B35	1035960	Spectrum Mid-America, LLC	38-08-18.8N	085-41-19.6W
B36	1300770	Eco-Site II LLC	38-09-24.4N	085-41-28.6W
B37	1301577	Word Broadcasting Network, Inc.	38-09-36.2N	085-41-33.2W
B38	1236901	Crown Castle South LLC	38-09-11.2N	085-41-52.0W
B39	1043318	SummitMedia, LLC	38-16-03.0N	085-41-53.0W
B40	1048807	Crown Castle South LLC	38-11-33.2N	085-42-15.5W
B41	1017572	Crown Castle GT Company LLC	38-11-44.3N	085-42-20.9W
B42	1010341	Pinnacle Towers LLC	38-09-28.5N	085-42-26.0W
B43	1046103	Crown Castle GT Company LLC	38-09-13.1N	085-42-26.1W
B44	1008873	CARITAS PEACE CENTER	38-13-02.0N	085-42-37.0W
B45	1013177	Norfolk Southern Railway Company	38-11-25.7N	085-42-39.5W
B46	1298039	Crown Castle South LLC	38-06-26.2N	085-42-44.9W
B47	1043328	Crown Communications LLC	38-06-27.9N	085-42-45.6W
B48	1065875	Salem Media of Massachusetts, LLC	38-15-57.5N	085-42-49.7W
B49	1255569	Louisville Metro Government Emergency Services	38-14-06.2N	085-42-54.8W
B50	1205287			

SUBMITTALS

DATE	DESCRIPTION	REV	ISSUED BY
07/31/2020	FOR REVIEW	A	RM
10/14/2020	FOR REVIEW	B	RM

DRAWN BY: CTS
 CHECKED BY: CZB
 APPVD BY: RM
 MNS PROJECT NO: 21365

THE INFORMATION CONTAINED IN THESE DOCUMENTS IS PROPRIETARY BY NATURE. REPRODUCTION OR CAUSING TO BE REPRODUCED THE WHOLE OR ANY PART OF THESE DRAWINGS WITHOUT THE PERMISSION OF MASTEC NETWORK SOLUTIONS IS PROHIBITED.



SITE NAME:
HEADLEY HOLLOW

FA LOCATION:
11563658

SITE ADDRESS:
**4513 BLEVINS GAP ROAD
LOUISVILLE, KY 40272**

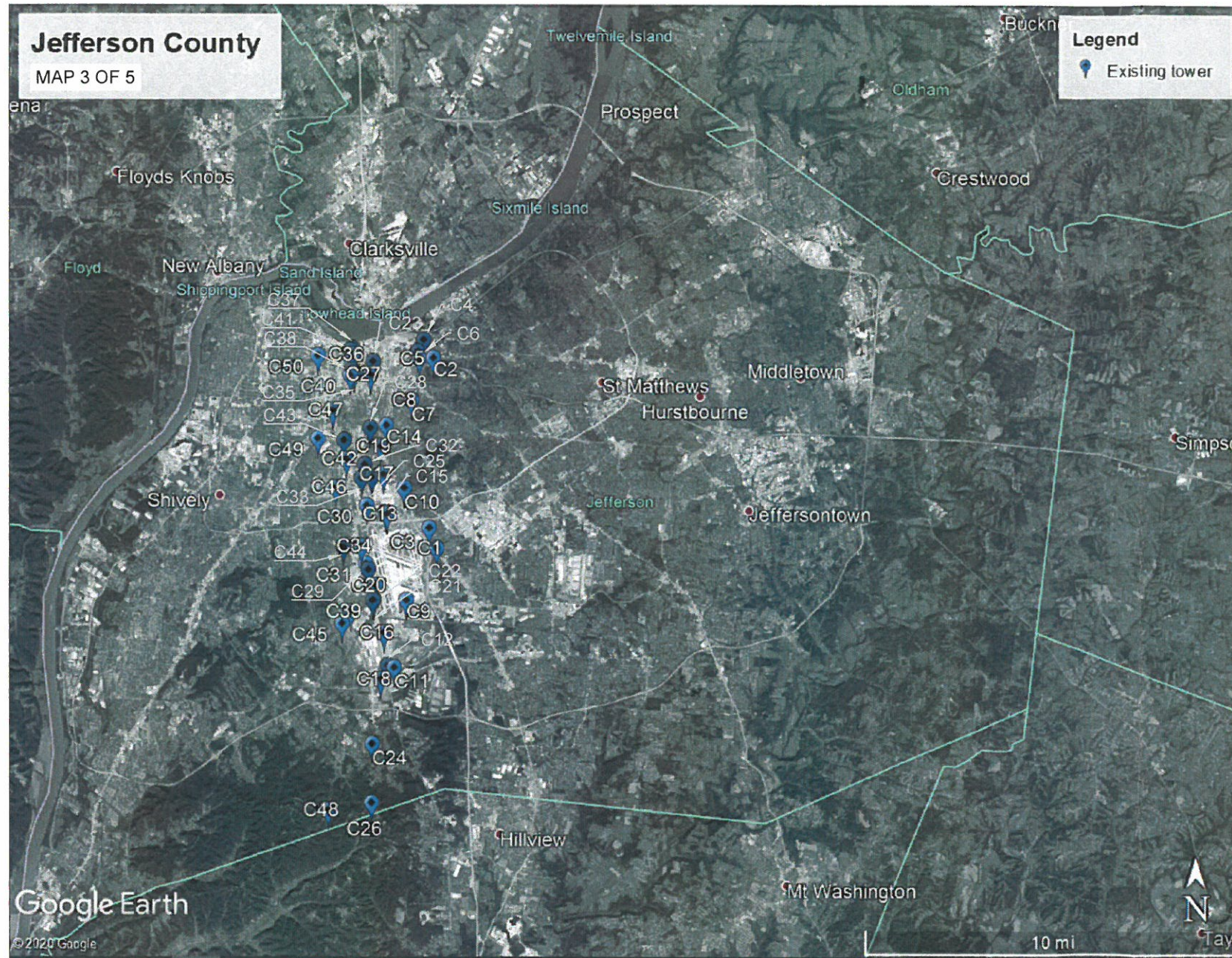
SHEET TITLE
TOWER COUNTY MAP

SHEET NUMBER
M-2

RECEIVED
 FEB 10 2021
 PLANNING & DESIGN
 SERVICES

21-CELL-0001

PRELIMINARY



Existing towers				
Label	FAA #	Tower Owner	Lat	Long
C1	1241533	Cellco Partnership	38-10-38.6N	085-42-59.5W
C2	1030899	RADIOLAND INC	38-15-02.0N	085-43-06.0W
C3	1002086	JEFFERSON COUNTY PUBLIC SCHOOLS	38-11-07.0N	085-43-13.0W
C4	1000439	SBA Towers III LLC	38-15-27.0N	085-43-23.3W
C5	1036192	Crown Castle GT Company LLC	38-15-01.0N	085-43-31.0W
C6	1295093	CSX Transportation	38-15-10.6N	085-43-34.2W
C7	1210646	Crown Castle South LLC	38-14-03.5N	085-43-44.8W
C8	1302196	CROWN CASTLE SOUTH LLC	38-14-03.4N	085-43-44.9W
C9	1241547	TowerCo 2013 LLC	38-09-27.1N	085-43-53.4W
C10	1298040	Norfolk Southern Railway Company	38-12-02.1N	085-43-57.4W
C11	1217764	Louisville Gas & Electric Company	38-07-53.9N	085-44-14.5W
C12	1307051	CSX Transportation	38-07-56.4N	085-44-26.5W
C13	1043331	Crown Castle South LLC	38-11-25.8N	085-44-27.6W
C14	1035964	Crown Castle GT Company LLC	38-13-28.8N	085-44-28.9W
C15	1036037	Crown Castle GT Company LLC	38-11-28.3N	085-44-29.9W
C16	1268154	CSX Transportation	38-08-41.9N	085-44-32.9W
C17	1299173	Norfolk Southern Railway Company	38-12-21.2N	085-44-34.0W
C18	1230232	Crown Communication LLC	38-07-37.4N	085-44-38.6W
C19	1043335	Crown Castle South LLC	38-12-59.7N	085-44-39.7W
C20	1204105	CSX Transportation	38-09-47.2N	085-44-47.8W
C21	1211380	CSX Transportation	38-09-28.0N	085-44-51.0W
C22	1301826	CSX Transportation	38-09-27.0N	085-44-52.8W
C23	1052120	UNIVERSITY OF LOUISVILLE	38-14-57.0N	085-44-53.0W
C24	1300994	SBA Towers X, LLC	38-06-08.0N	085-44-54.2W
C25	1268381	Kentucky, Commonwealth of, Ky Emergency Warning System	38-12-17.3N	085-44-54.9W
C26	1264693	Global Tower, LLC. through American Towers, LLC	38-04-46.2N	085-44-55.1W
C27	1042477	Gray Media Group, Inc.	38-14-39.0N	085-44-57.7W
C28	1219216	Yellow Cab Co of Louisville	38-13-25.0N	085-44-58.0W
C29	1200486	CSX Transportation	38-10-09.0N	085-45-01.0W
C30	1062372	MERCY AMBULANCE	38-11-38.0N	085-45-04.0W
C31	1305887	CSX Transportation	38-10-17.5N	085-45-05.5W
C32	1219003	CCATT LLC	38-12-34.7N	085-45-07.6W
C33	1228955	Cellco Partnership	38-12-15.6N	085-45-13.0W
C34	1295091	CSX Transportation	38-10-41.9N	085-45-13.4W
C35	1047632	LOUISVILLE & JEFFERSON COUNTY LIBRARY ADVISORY COMMISSION DBA = LOUISVILLE FREE PUBLIC LIBRARY	38-14-41.0N	085-45-27.0W
C36	1056250	MCI Communications	38-15-06.3N	085-45-27.9W
C37	1000017	KHLB PARTNERS DBA = KY HOME LIFE BUILDING	38-15-15.0N	085-45-30.0W
C38	1052197	Worldwide Communications Associates Inc.	38-14-45.0N	085-45-30.0W
C39	1241058	T-Mobile West Tower LLC	38-09-11.1N	085-45-31.8W
C40	1056416	VB-S1 Assets, LLC	38-14-38.0N	085-45-33.0W
C41	1243899	RADIO COMMUNICATIONS SYSTEMS	38-15-12.5N	085-45-33.4W
C42	1055010	UNIVERSITY OF LOUISVILLE	38-12-42.0N	085-45-40.0W
C43	1052121	UNIVERSITY OF LOUISVILLE	38-13-08.0N	085-45-44.0W
C44	1277085	SBA Monarch Towers I, LLC	38-10-40.5N	085-45-44.7W
C45	1298261	PI Tower Development, LLC	38-08-54.9N	085-45-47.1W
C46	1249649	Cellco Partnership	38-12-02.9N	085-45-58.0W
C47	1300620	Capital Telecom Holdings LLC	38-13-49.8N	085-46-03.8W
C48	1041557	SBA Towers, LLC	38-04-36.0N	085-46-11.0W
C49	1043323	Crown Castle South LLC	38-13-10.7N	085-46-29.7W
C50	1294839	American Towers LLC	38-15-05.2N	085-46-30.0W

SUBMITTALS			
DATE	DESCRIPTION	REV	ISSUED BY
07/31/2020	FOR REVIEW	A	RM
10/14/2020	FOR REVIEW	B	RM

DRAWN BY: CTS
 CHECKED BY: CZB
 APPVD BY: RM
 MNS PROJECT NO: 21365

THE INFORMATION CONTAINED IN THESE DOCUMENTS IS PROPRIETARY BY NATURE. REPRODUCTION OR CAUSING TO BE REPRODUCED THE WHOLE OR ANY PART OF THESE DRAWINGS WITHOUT THE PERMISSION OF MASTEC NETWORK SOLUTIONS IS PROHIBITED.

PREPARED FOR:

PREPARED BY:

 507 AIRPORT BLVD, SUITE 111
 MORRISVILLE, NC 27560

SITE NAME:
HEADLEY HOLLOW

FA LOCATION:
11563658

SITE ADDRESS:
**4513 BLEVINS GAP ROAD
 LOUISVILLE, KY 40272**

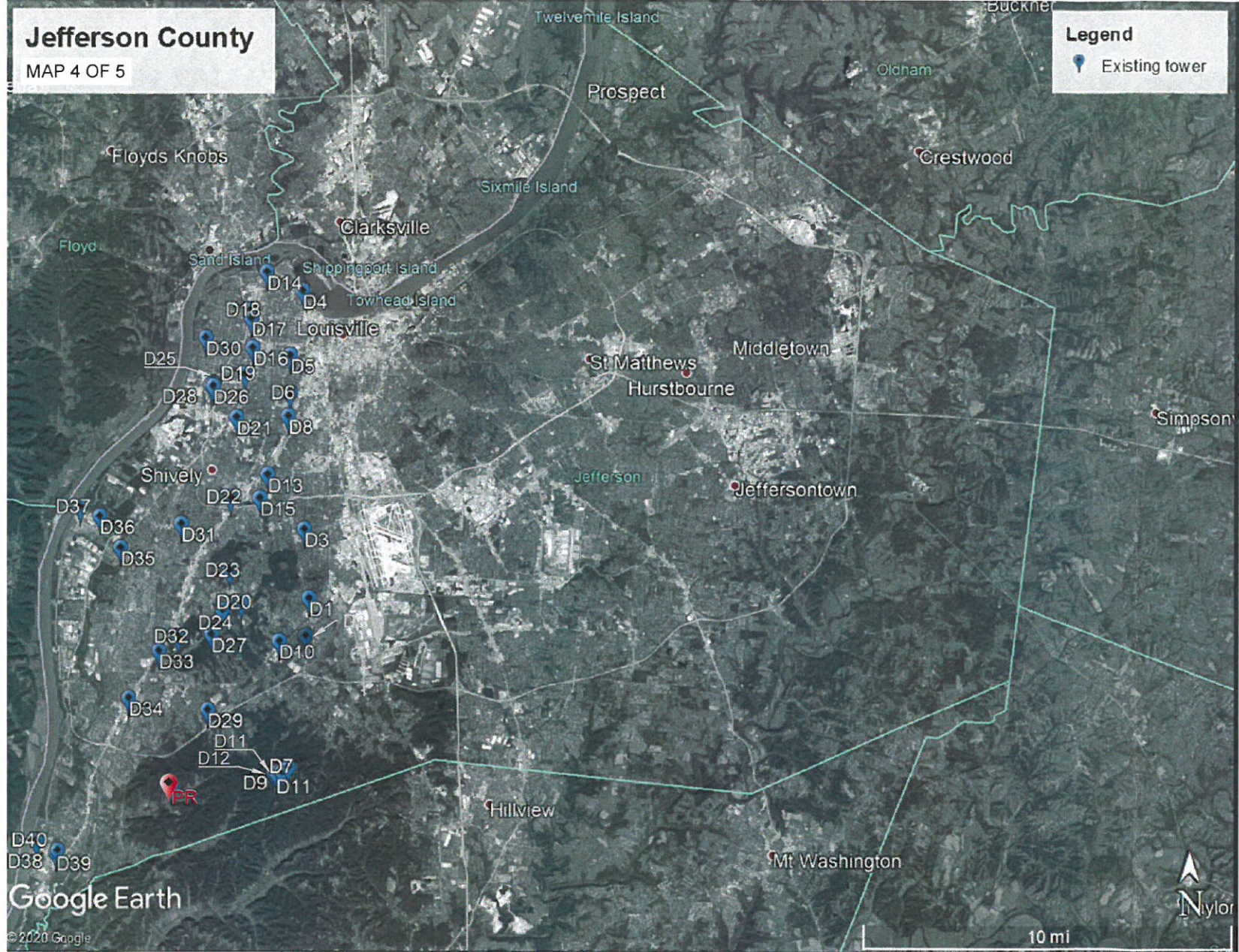
SHEET TITLE
TOWER COUNTY MAP

SHEET NUMBER
M-3

RECEIVED
 FEB 10 2021
 PLANNING & DESIGN SERVICES

21-FLI-0001

PRELIMINARY



Existing towers				
Label	FAA #	Tower Owner	Lat	Long
D1	1311716	Vertical Bridge Development, LLC	38-08-52.7N	085-46-30.2W
D2	1003417	Crown Castle South LLC	38-07-59.8N	085-46-36.2W
D3	1057556	Crown Castle Towers 06-2 LLC	38-10-29.6N	085-46-38.6W
D4	1277859	Cellco Partnership	38-16-03.5N	085-46-41.7W
D5	1283936	Crown Castle South LLC	38-14-33.1N	085-47-03.7W
D6	1244184	T-Mobile West Tower LLC	38-13-40.1N	085-47-03.8W
D7	1023251	Pinnacle Towers LLC	38-04-55.3N	085-47-06.3W
D8	1035972	Crown Castle GT Company LLC	38-13-08.0N	085-47-07.0W
D9	1241545	American Messaging Services, LLC	38-04-48.4N	085-47-17.7W
D10	1035977	Crown Castle GT Company LLC	38-07-52.4N	085-47-22.7W
D11	1055901	SBA Towers, LLC	38-04-47.0N	085-47-28.0W
D12	1042267	OP HILL PARTNERSHIP LTD	38-04-47.0N	085-47-34.0W
D13	1235791	Crown Castle South LLC	38-11-46.0N	085-47-43.7W
D14	1266001	Global Tower, LLC. through American Towers, LLC	38-16-29.7N	085-47-45.5W
D15	1261156	Louisville Metro Government Emergency Services	38-11-13.0N	085-47-57.2W
D16	1239534	T-Mobile West Tower LLC	38-14-43.8N	085-48-10.1W
D17	1043321	Crown Castle South LLC	38-15-24.7N	085-48-12.6W
D18	1035965	Crown Castle GT Company LLC	38-15-36.0N	085-48-15.0W
D19	1269160	American Towers LLC	38-14-06.8N	085-48-23.5W
D20	1001830	Louisville Metro Government Emergency Services	38-08-46.0N	085-48-30.0W
D21	1297749	American Towers LLC	38-13-06.3N	085-48-38.6W
D22	1000440	Global Tower, LLC. through American Towers, LLC	38-11-13.7N	085-48-48.5W
D23	1043322	Crown Castle South LLC	38-09-30.9N	085-48-50.6W
D24	1228855	T-Mobile South LLC	38-08-35.4N	085-49-03.2W
D25	1053956	New Albany Broadcasting Co., Inc.	38-13-54.0N	085-49-20.0W
D26	1053957	New Albany Broadcasting Co., Inc.	38-13-50.0N	085-49-20.0W
D27	1201599	Louisville Metro Government Emergency Services	38-08-01.5N	085-49-22.8W
D28	1053958	New Albany Broadcasting Co., Inc.	38-13-51.0N	085-49-24.0W
D29	1225400	Crown Communication LLC	38-06-15.6N	085-49-29.5W
D30	1264933	T-Mobile USA Tower LLC	38-14-57.9N	085-49-34.0W
D31	1035974	Crown Castle GT Company LLC	38-10-36.8N	085-50-17.7W
D32	1035966	Crown Castle GT Company LLC	38-07-58.0N	085-50-23.0W
D33	1262369	SBA Monarch Towers I, LLC	38-07-38.6N	085-50-57.9W
D34	1001079	Valley Station Towne Center	38-06-32.0N	085-51-53.0W
D35	1301108	Eco-Site II LLC	38-10-03.2N	085-52-07.9W
D36	1285000	Louisville Gas & Electric Company	38-10-47.4N	085-52-45.2W
D37	1043082	LOUISVILLE GAS AND ELECTRIC COMPANY	38-11-00.0N	085-53-20.0W
D38	1065879	Crown Communications LLC	38-02-57.7N	085-54-00.0W
D39	1043336	Crown Castle South LLC	38-02-54.6N	085-54-02.8W
D40	1043085	LOUISVILLE GAS AND ELECTRIC COMPANY	38-03-11.0N	085-54-37.0W
Proposed Tower				
PR	TBD	NEW CINGULAR WIRELESS PCS, LLC A DELAWARE LIMITED LIABILITY COMPANY, D/B/A AT&T MOBILITY	38-04-28.0N	085-50-35.5W

SUBMITTALS

DATE	DESCRIPTION	REV	ISSUED BY
07/31/2020	FOR REVIEW	A	RM
10/14/2020	FOR REVIEW	B	RM

DRAWN BY: CTS
 CHECKED BY: CZB
 APPVD BY: RM
 MNS PROJECT NO: 21365

THE INFORMATION CONTAINED IN THESE DOCUMENTS IS PROPRIETARY BY NATURE. REPRODUCTION OR CAUSING TO BE REPRODUCED THE WHOLE OR ANY PART OF THESE DRAWINGS WITHOUT THE PERMISSION OF MASTEC NETWORK SOLUTIONS IS PROHIBITED.

PREPARED FOR:

PREPARED BY:

507 AIRPORT BLVD, SUITE 111
MORRISVILLE, NC 27560

SITE NAME:
HEADLEY HOLLOW

FA LOCATION:
11563658

SITE ADDRESS:
**4513 BLEVINS GAP ROAD
LOUISVILLE, KY 40272**

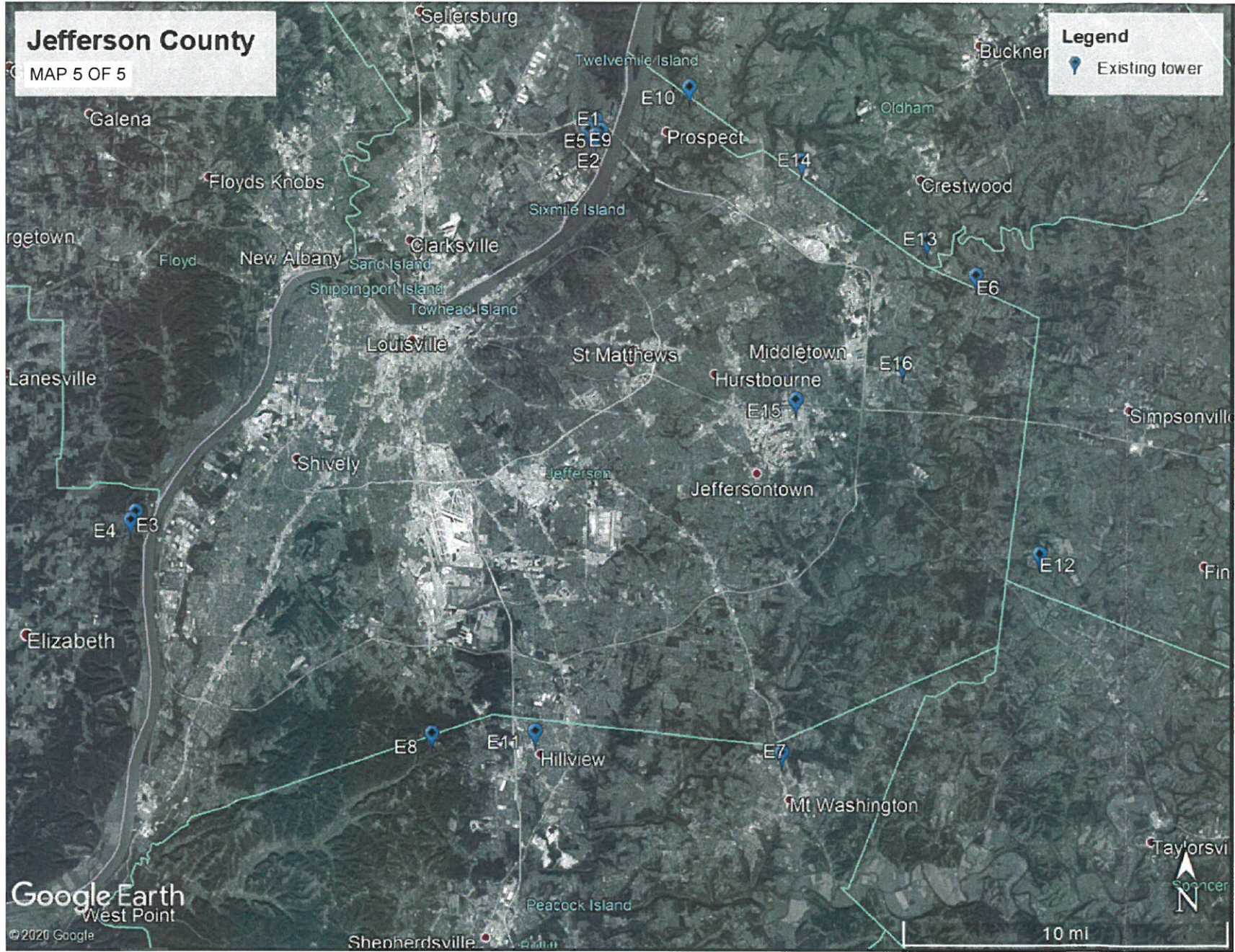
SHEET TITLE
TOWER COUNTY MAP

SHEET NUMBER
M-4

RECEIVED
FEB 10 2021
PLANNING & DESIGN SERVICES

21-CELL-0001

PRELIMINARY



EXISTING TOWER LEGEND				
TABLE	FAA#	OWNER	LAT.	LONG.
E1	1000015	STC Five LLC	38-20-52.0N	085-39-20.2W
E2	1029191	Crown Castle GT Company LLC	38-20-27.0N	085-39-20.0W
E3	1030368	ARRISON PARTNERSHIP LTD	38-10-25.0N	085-54-50.0W
E4	1030742	SBA Towers, LLC	38-10-12.0N	085-55-00.0W
E5	1035325	Crown Castle South LLC	38-20-35.4N	085-39-09.3W
E6	1056915	RADIOLAND INC	38-16-47.0N	085-26-30.0W
E7	1057061	Crown Communications LLC	38-04-07.2N	085-33-00.4W
E8	1059922	Crown Castle GT Company LLC	38-04-34.5N	085-44-46.7W
E9	1065502	Crown Communications LLC	38-20-37.0N	085-39-34.0W
E10	1227983	Crown Communication LLC	38-21-44.8N	085-36-10.1W
E11	1266534	SBA Monarch Towers III, LLC	38-04-38.8N	085-41-18.2W
E12	1297291	PI Tower Development, LLC	38-09-23.8N	085-24-16.6W
E13	1302193	PI Tower Development, LLC c/o LendLease Americas Inc	38-17-43.4N	085-28-07.8W
E14	N/A	UNREGISTERED	38-19-48.3N	085-32-23.9W
E15	N/A	UNREGISTERED	38-13-28.3N	085-32-34.14W
E16	N/A	UNREGISTERED	38-14-25.79N	085-28-55.92W

SUBMITTALS			
DATE	DESCRIPTION	REV	ISSUED BY
07/31/2020	FOR REVIEW	A	RM
10/14/2020	FOR REVIEW	B	RM

DRAWN BY: CTS
 CHECKED BY: CZB
 APPVD BY: RM
 MNS PROJECT NO: 21365

THE INFORMATION CONTAINED IN THESE DOCUMENTS IS PROPRIETARY BY NATURE. REPRODUCTION OR CAUSING TO BE REPRODUCED THE WHOLE OR ANY PART OF THESE DRAWINGS WITHOUT THE PERMISSION OF MASTEC NETWORK SOLUTIONS IS PROHIBITED.



SITE NAME:
HEADLEY HOLLOW

FA LOCATION:
11563658

SITE ADDRESS:
**4513 BLEVINS GAP ROAD
 LOUISVILLE, KY 40272**

SHEET TITLE
TOWER COUNTY MAP

SHEET NUMBER
M-5

RECEIVED
 FEB 10 2021
 PLANNING & DESIGN SERVICES

21-CELL-0001