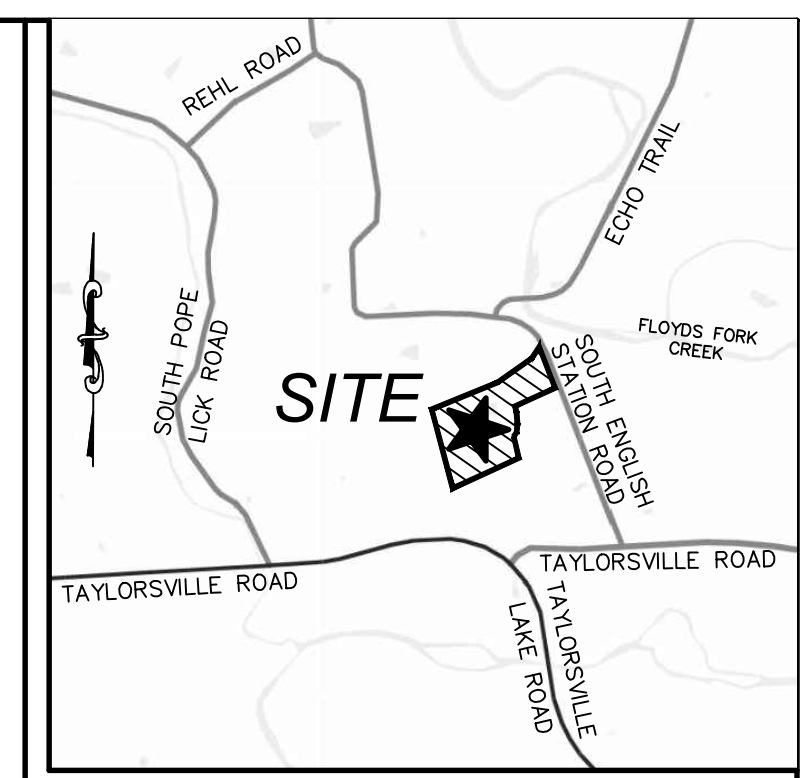


LUMINAIRE SCHEDULE

CALLOUT	SYMBOL	LAMP	DESCRIPTION	BALLAST	MOUNTING	MODEL	VOLTS	QUANTITY
SL		(1) 239W LED, LED	EALS03 EVOLVE LED AREA	ELECTRONIC	POLE	GE LIGHTING SOLUTIONS, EALS03_K4AF750	120V 1P 2W	12
SL-B		(1) 239W LED, LED	EALS03 EVOLVE LED AREA	ELECTRONIC	POLE	GE LIGHTING SOLUTIONS, EALS03_K4AF750-ELS-EAL-FBL-BLCK	120V 1P 2W	15
WP			EVOLVE LED WALLPACK - EWNB	ELECTRONIC	WALL	GE LIGHTING SOLUTIONS, EWNB_A3740	120V 1P 2W	27

GENERAL PHOTOMETRIC SCHEDULE

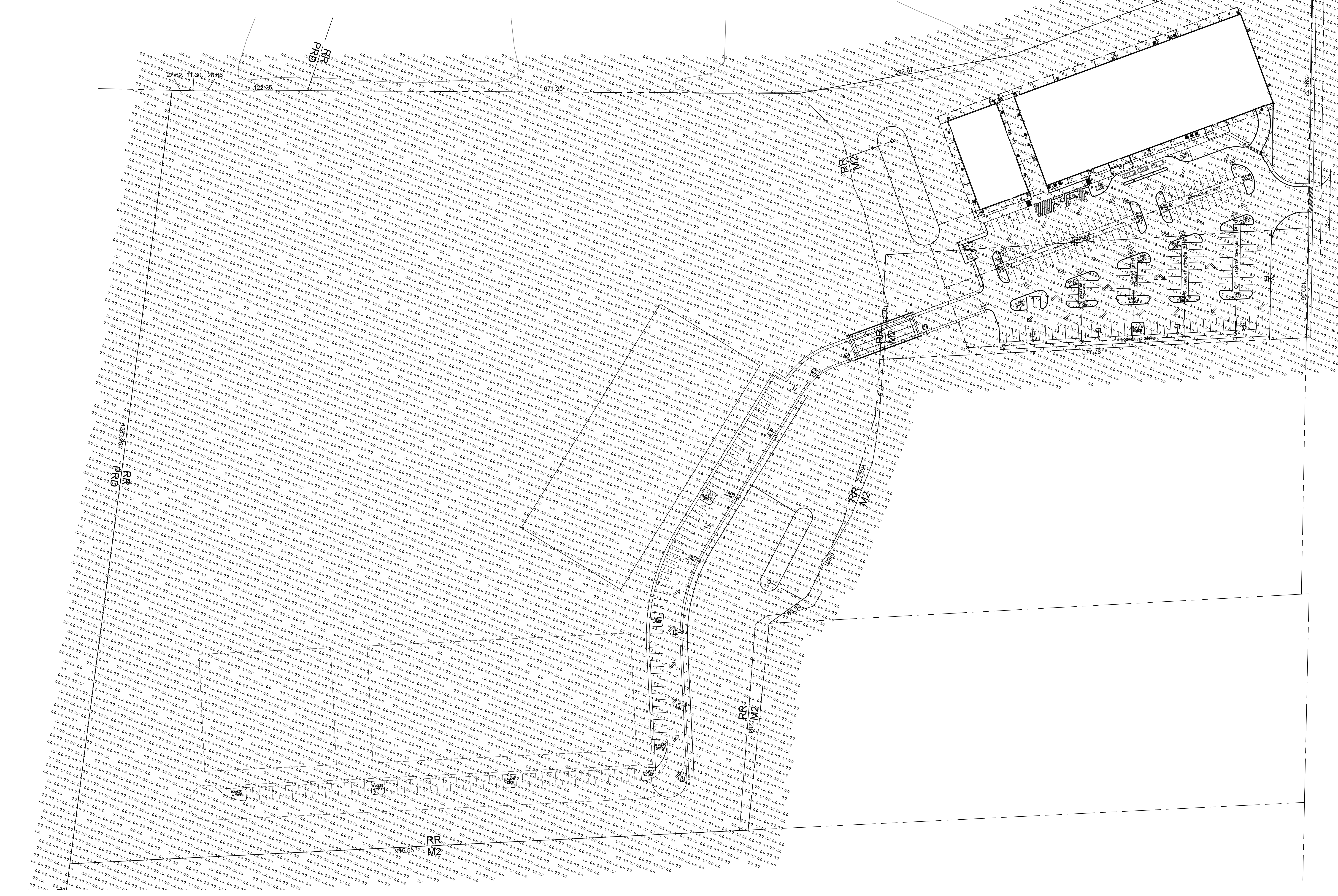
AVERAGE FOOT-CANDLES	1.9
MAXIMUM FOOT-CANDLES	22.1 UNDER LOADING DOCK CANPOY
MINIMUM FOOT-CANDLES	0.0
MINIMUM TO MAXIMUM FC RATIO	0.0
MAXIMUM TO MINIMUM FC RATIO	22.1 / 0.0
AVERAGE TO MINIMUM FC RATIO	1.9 / 0.0



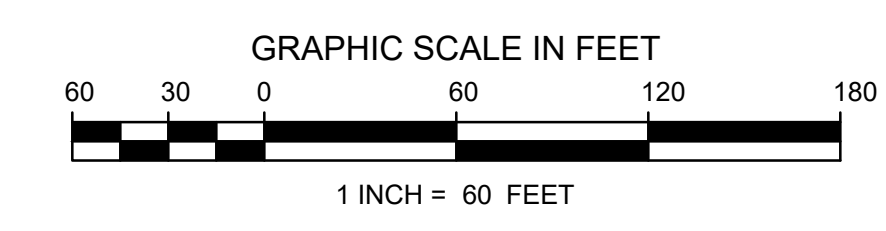
Vicinity Map
Not To Scale

LEGEND

- EMH EX. ELECTRIC MANHOLE
- SMH EX. SANITARY MANHOLE
- EP EX. EDGE OF PAVEMENT
- HIP EX. HANDPUMP
- MB EX. MAIL BOX
- CRST EX. CRUSHED STONE
- LP EX. LIGHT POLE
- GM EX. GAS METER
- AC EX. AIR CONDITIONER UNIT
- WM EX. WATER METER
- UP EX. UTILITY POLE
- CP EX. CATV PEDESTAL
- SM EX. STORM MANHOLE
- CONC EX. CONCRETE
- TR EX. TREE LINE
- WF EX. WIRE FENCE
- BF EX. BOARD FENCE
- CO EX. CONTOURS (1' INTERVAL)
- TRM EX. TO BE REMOVED
- UP EX. UTILITY POLE
- EB EX. ELECTRIC BOX
- TYP TYPICAL
- EX. TREE WITH SIZE
- SL EX. STORM LINE
- EX. UNDERGROUND TELEPHONE
- EX. OVERHEAD ELECTRIC
- EX. UNDERGROUND FIBER OPTIC
- EX. WATER
- EX. PROPERTY LINE (REMOVED)
- EX. FLOW ARROWS



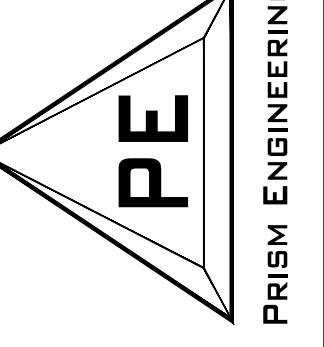
**PHOTOMETRIC PLAN FOR
CONDITIONAL USE PERMIT**



WM # 12470
22-CUP-0365

PE Proj. # 222006-E2

PRISM ENGINEERING
2309 WATKINS TRAIL SUITE 200
LOUISVILLE, KENTUCKY 40299
OFFICE (502) 491-8891
FAX (502) 491-8899
WWW.PRISMENGINEERING.COM



© COPYRIGHT 2022

THE JUNCTION ATHLETIC FACILITY

2800 S ENGLISH STATION ROAD
LOUISVILLE KENTUCKY 40299

NO.	DESCRIPTION	DATE
1	AGENCY COMMENTS & PLAN REVISIONS	1/25/2023
2	MSD COMMENTS & PLAN REVISIONS	2/24/2023

OWNER/DEVELOPER	DRAWN	CHECK	INCHARGE
SERENDIPITY KY, LLC PROJECT # 24008			

AUGUST 1, 2022

CUP PHOTOMETRIC
PLAN
PP1.0