


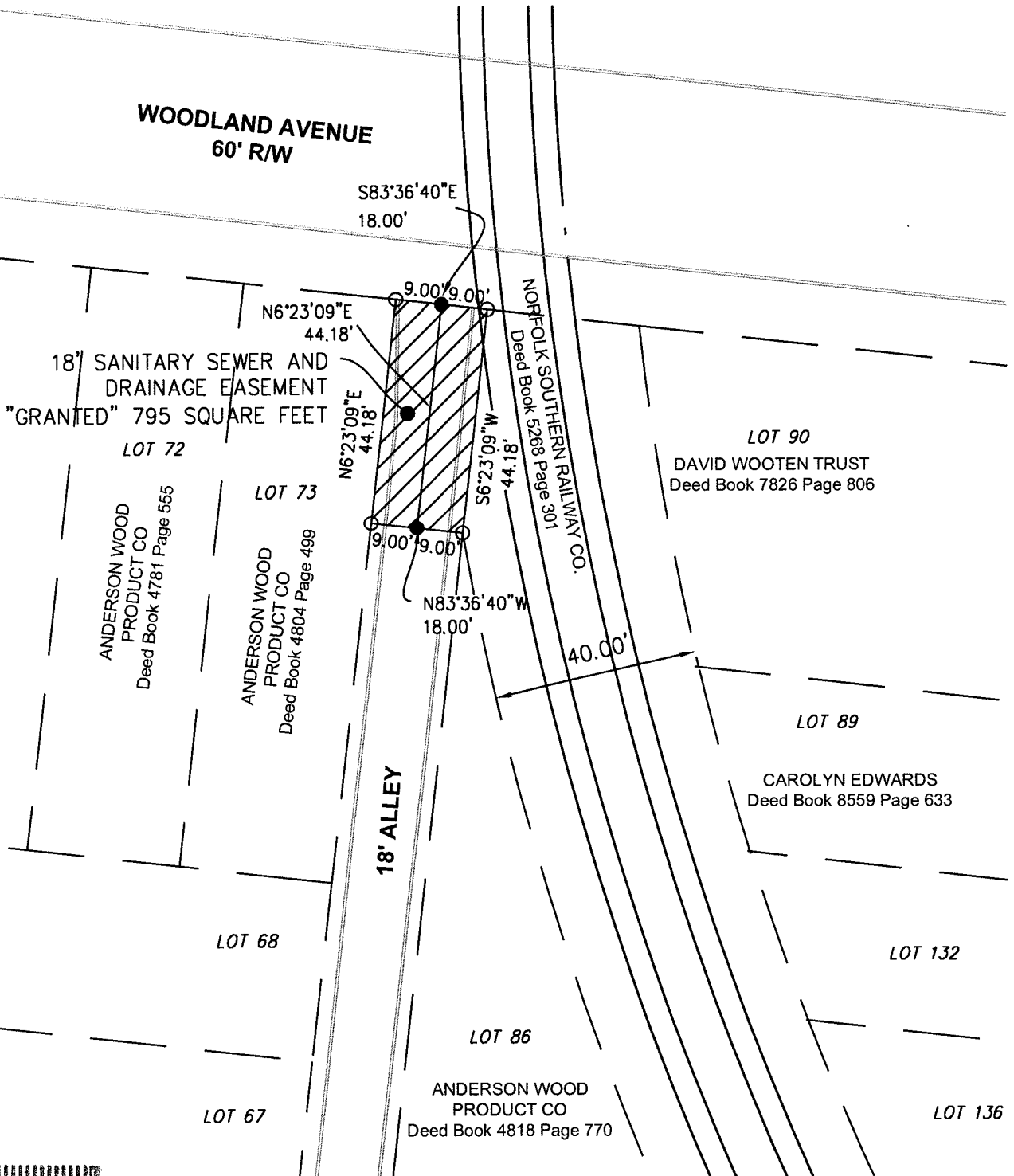


Vicinity Map

NOTE:
LOT NUMBERS SHOWN HEREON
REFER TO TAX BLOCK 48J.

LEGEND

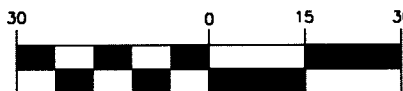
-  SANITARY SEWER & DRAINAGE EASEMENT
"GRANTED" = 795 SQUARE FEET
-  COMPUTED UNMARKED CORNER
-  MAG NAIL WITH WASHER
STAMPED "HOLLAND 4043"



North and all bearings shown hereon are based on grid north of the KY state plane coordinate system, single zone (NAD 83) as established by GPS

STATE OF KENTUCKY
DERRICK SCOTT HOLLAND
4043
LICENSED PROFESSIONAL LAND SURVEYOR

GRAPHIC SCALE



(IN FEET)
1 inch = 30 ft.

SANITARY SEWER & DRAINAGE EASEMENT PLAT

Site Information

18' Alley south of Woodland Ave.
Between Hemlock St. & Beech St.
Louisville, Jefferson County, Kentucky

LAND SURVEYOR'S CERTIFICATE

I hereby certify that this Easement Plat and survey were made under my supervision, and that the angular and linear measurements as witnessed by monuments shown hereon are true and correct to the best of my knowledge and belief. This survey does not represent a boundary survey and is not intended for land transfer.

February 25, 2016

Derrick Scott Holland PLS #4043

Date:

BTM ENGINEERING, INC.

Consulting Engineers Landscape Architects Planners
3001 Taylor Springs Drive
Louisville, Kentucky 40220
(502) 459-8402



Date: 8-20-2014 Project No. 140248 Scale : 1" = 30' Sheet 1 of 1

1451000751018