

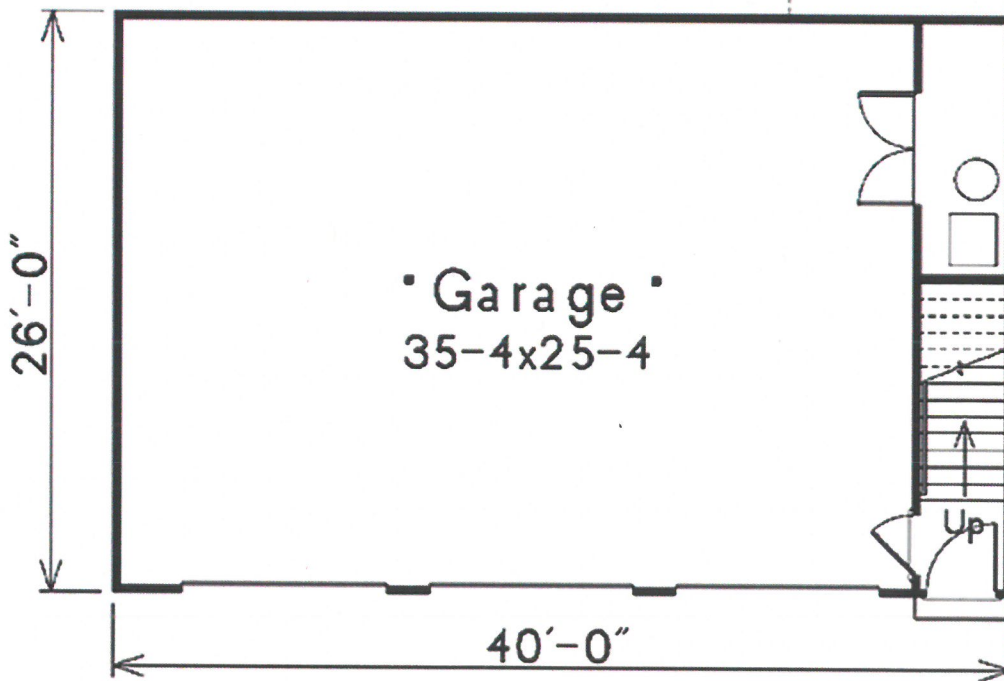
1832 Alfresco Place

garage with accessory apartment proposal (p. 1 of 2)



RECEIVED

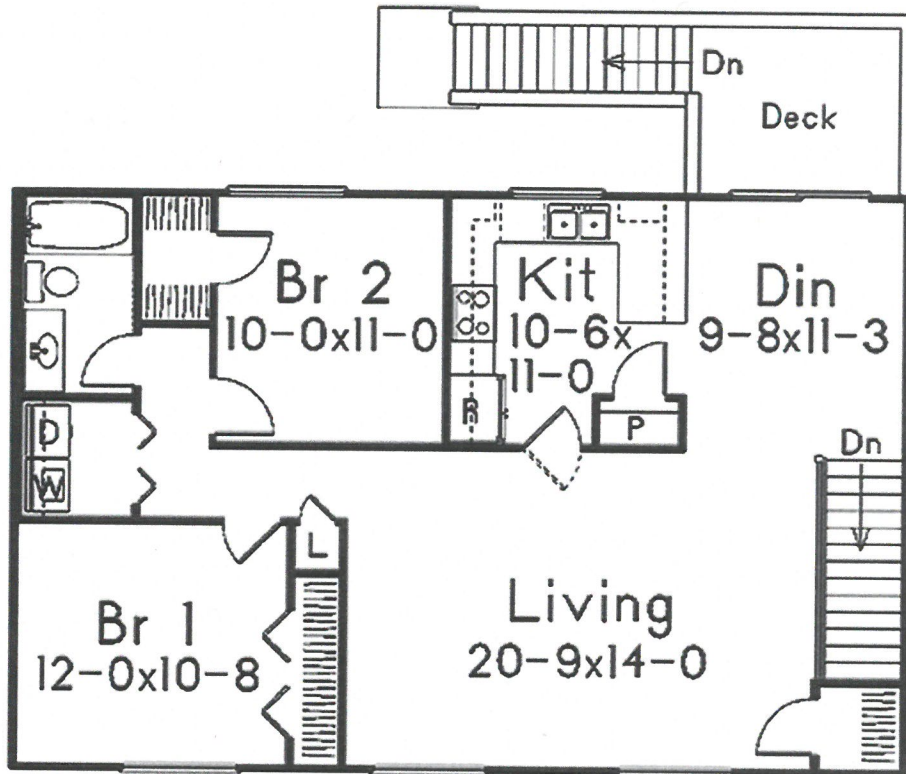
MAY 23 2016  
PLANNING &  
DESIGN SERVICES



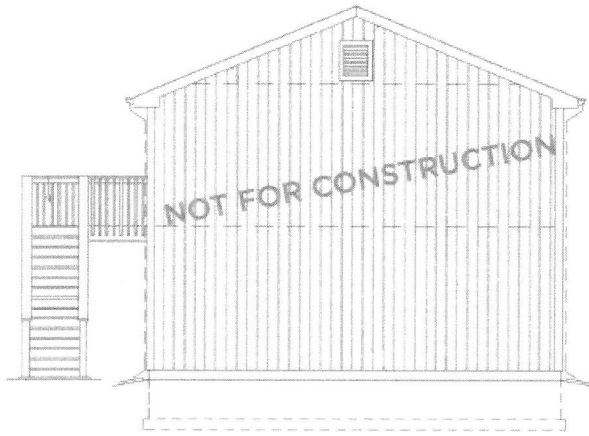
16 CUP 1015

1832 Alfresco Place

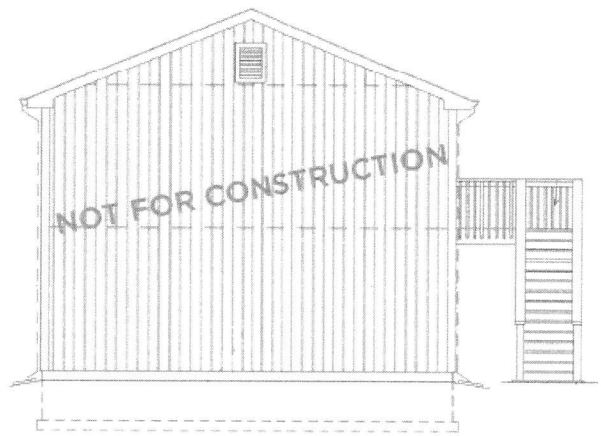
garage with accessory apartment proposal (p. 2 of 2)



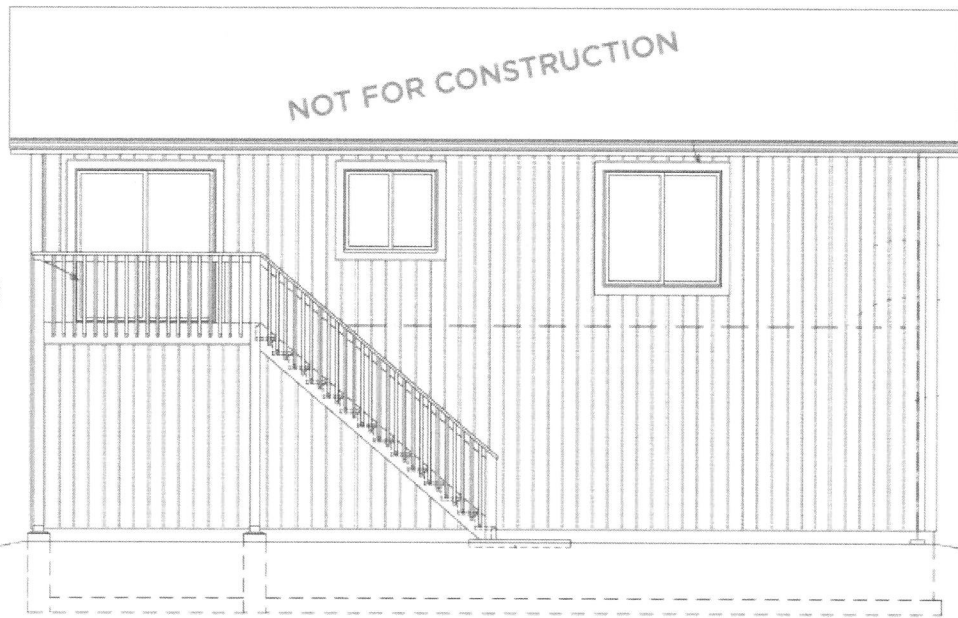
RECEIVED  
MAY 23 2015  
PLANNING &  
DESIGN SERVICES



Left Elevation



Right Elevation



Rear Elevation

**RECEIVED**  
MAY 23 2015  
PLANNING &  
DESIGN SERVICES



Neighborhood Garages and Garages with Accessory Apartments Representing Differing Styles, Sizes, and Designs

*\*all garages located on rear alley, one block to the right of 1832 Alfresco and one block to the left*



RECEIVED  
MAY 23 2016  
PLANNING &  
DESIGN SERVICES





Neighborhood Garages and Garages with Accessory Apartments Representing Differing Styles, Sizes, and Designs

*\*all garages located on rear alley, one block to the right of 1832 Alfresco and one block to the left*





Neighborhood Garages and Garages with Accessory Apartments Representing Differing Styles, Sizes, and Designs

*\*all garages located on rear alley, one block to the right of 1832 Alfresco and one block to the left*



garage with accessory apartment



garage with accessory apartment



Neighborhood Garages and Garages with Accessory Apartments Representing Differing Styles, Sizes, and Designs

*\*all garages located on rear alley, one block to the right of 1832 Alfresco and one block to the left*





Neighborhood Garages and Garages with Accessory Apartments Representing Differing Styles, Sizes, and Designs

*\*all garages located on rear alley, one block to the right of 1832 Alfresco and one block to the left*



garage with accessory apartment (main house shown in front in picture below)





Neighborhood Garages and Garages with Accessory Apartments Representing Differing Styles, Sizes, and Designs

*\*all garages located on rear alley, one block to the right of 1832 Alfresco and one block to the left*



garage with accessory apartment (main house shown in picture below)

