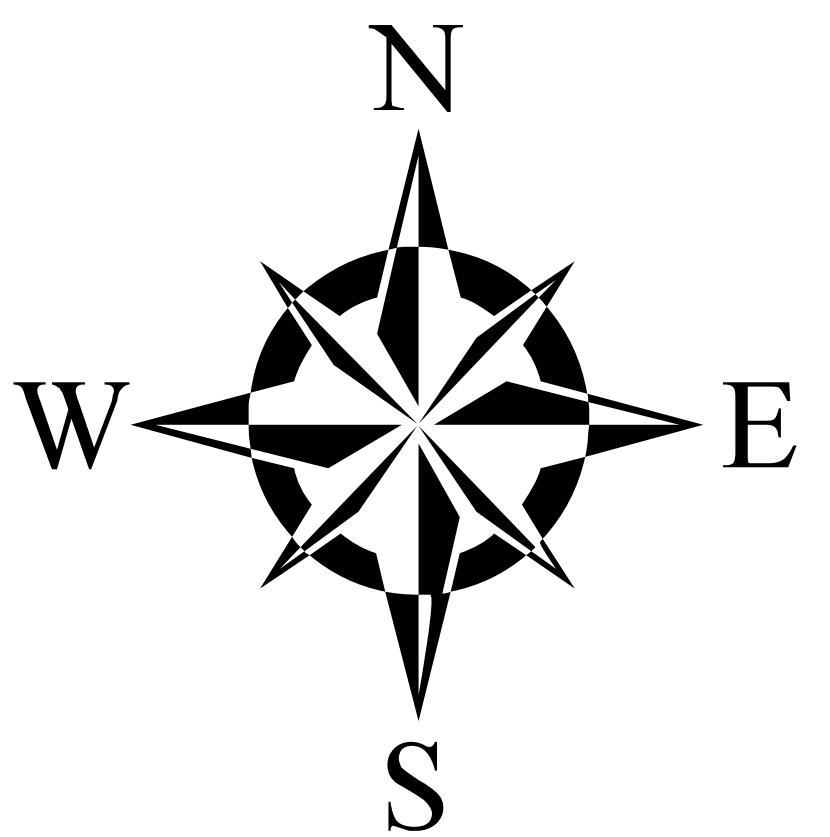


Locations Potentially Eligible for Biodigesters

Working Draft

Legend

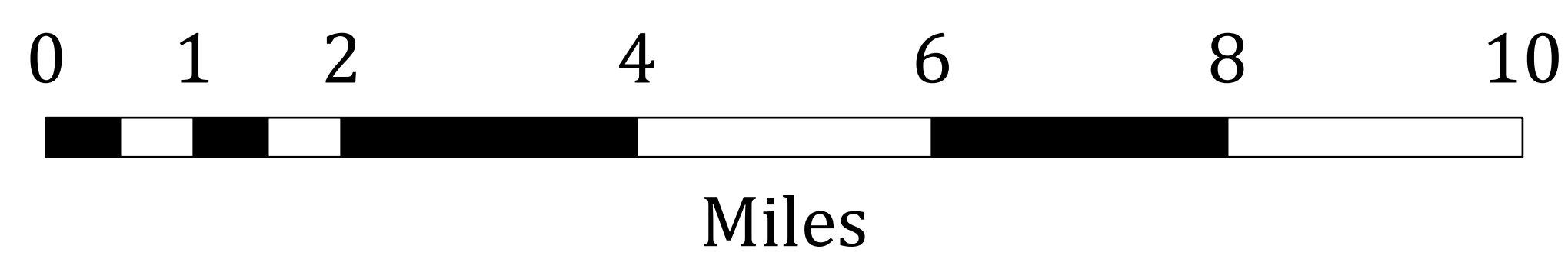
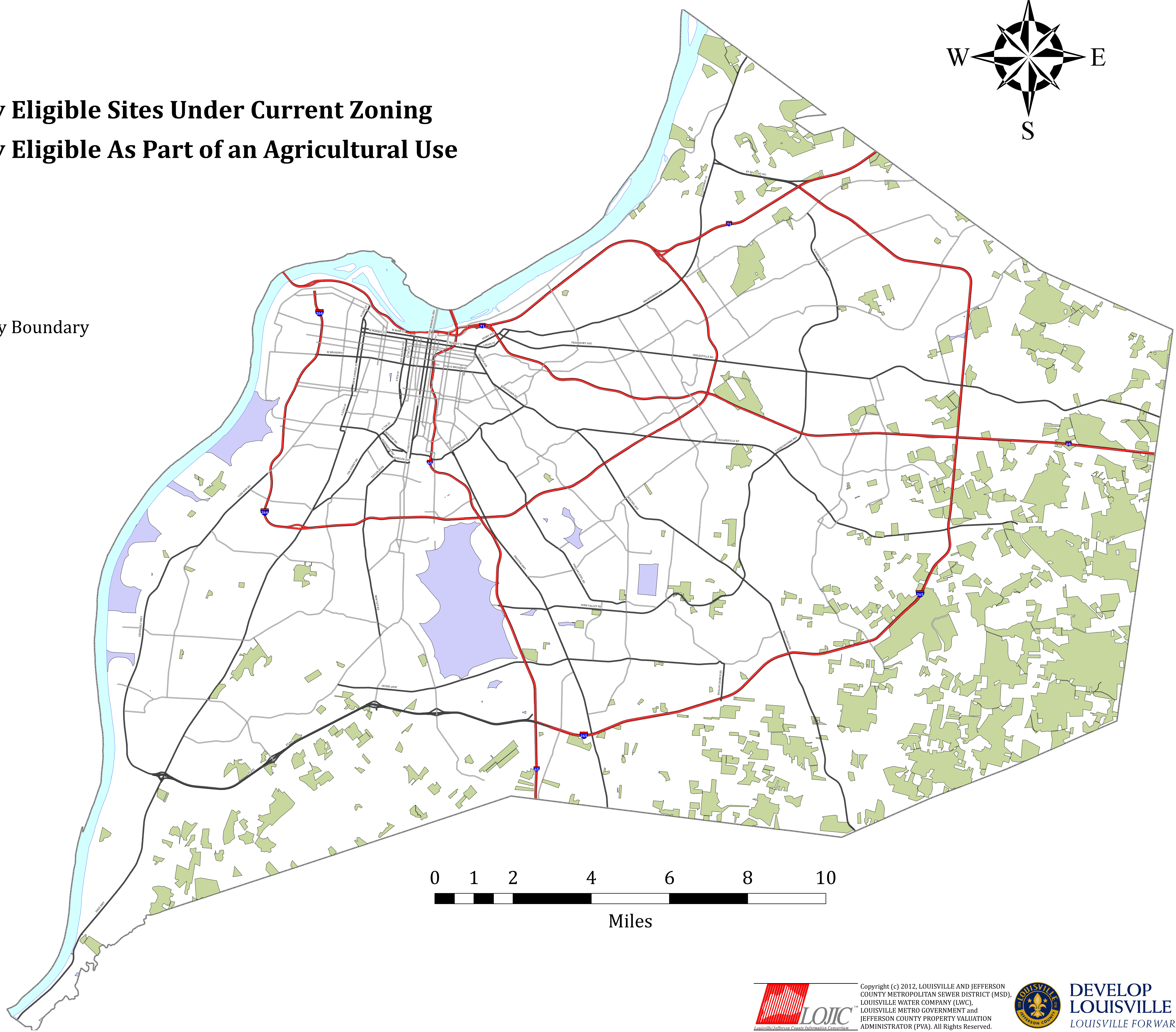
-  **Potentially Eligible Sites Under Current Zoning**
-  **Potentially Eligible As Part of an Agricultural Use**
-  Ohio River
-  Expressway
-  Major Arterial
-  Minor Arterial
-  Jefferson County Boundary



Data Source: Potential Eligible Sites - derived from zoning district boundary data (Planning & Design Services); land use, school, and religious building data (Property Valuation Administrator); park property and community center data (LOJIC) / County Boundary, Metro Council Districts and Roadways (LOJIC).

Disclaimer: This map was created by Planning & Design Services (PDS) and is intended to show areas where biodigesters could be permitted in Jefferson County under proposed regulations currently being considered. Due to limited data regarding the location of protected uses as defined in the proposed regulations, this map is not entirely accurate. Sites identified on this map as are only eligible for application. Upon further evaluation of a proposed site, it may be found ineligible or eligible following a review of additional information related to the presence of nearby protected uses (including but not limited to a residence, college, school, institution of learning, religious building, park, playground, community center, nursing home/assisted living center, or hospital). Please contact PDS with any questions regarding the proposed regulations and eligibility thereunder.

Last Edited: July 18, 2016



Copyright (c) 2012, LOUISVILLE AND JEFFERSON COUNTY METROPOLITAN SEWER DISTRICT (MSD), LOUISVILLE WATER COMPANY (LWC), LOUISVILLE METRO GOVERNMENT and JEFFERSON COUNTY PROPERTY VALUATION ADMINISTRATOR (PVA). All Rights Reserved.



DEVELOP LOUISVILLE
LOUISVILLE FORWARD