

ORDINANCE NO. 211, SERIES 2015

**AN ORDINANCE CLOSING THE 12' WIDE ALLEY BOUNDED BY W. LIBERTY STREET AND W. MUHAMMAD ALI BOULEVARD AND THE 12' WIDE ALLEY BOUNDED BY S. THIRD STREET AND A 12' WIDE UNNAMED ALLEY AND BEING IN LOUISVILLE METRO (CASE NO. 15STREETS1006).**

**SPONSORED BY: COUNCILWOMAN MADONNA FLOOD**

WHEREAS, the Louisville Metro Planning Commission, as set forth in its minutes and records of Case No. 15STREETS1006, has recommended to the Legislative Council of the Louisville/Jefferson County Metro Government (the "Council") that closing the 12' wide alley bounded by W. Liberty Street and W. Muhammad Ali Boulevard and the 12' wide alley bounded by S. Third Street and a 12' wide unnamed alley and being in Louisville Metro be approved to consolidate them with other tracts owned by Louisville Metro to create one large tract; and


WHEREAS, the Council concurs in and adopts the findings of the Planning Commission in Case No. 15STREETS1006 and approves and accepts the recommendation of the Planning Commission as set out in said minutes and records;

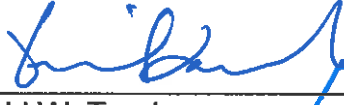
**NOW THEREFORE BE IT ORDAINED BY THE LEGISLATIVE COUNCIL OF THE LOUISVILLE/JEFFERSON COUNTY METRO GOVERNMENT AS FOLLOWS:**


**Section I:** That the 12' wide alley bounded by W. Liberty Street and W. Muhammad Ali Boulevard and the 12' wide alley bounded by S. Third Street and a 12' wide unnamed alley and being in Louisville Metro as more particularly described in the minutes and records of the Planning Commission in Case No. 15STREETS1006 and as shown on the attached plat be closed, subject to all existing easements of record and all

existing utility easements or rights enjoyed by said utility companies as the result of being located in, on or over said rights-of-way.

**Section II:** This Ordinance shall take effect upon its passage and approval.

  
H. Stephen Ott  
Metro Council Clerk

  
David W. Tandy  
President of the Council

  
Greg Fischer  
Mayor

Approved: 12/21/15  
Date

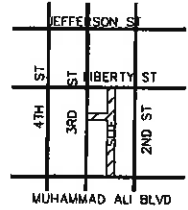
**APPROVED AS TO FORM AND LEGALITY:**

Michael J. O'Connell  
Jefferson County Attorney

By: 

**LOUISVILLE METRO COUNCIL  
READ AND PASSED  
December 17, 2015**

LIBERTY STREET 60' R/W S 81°07'24" E 12.0'



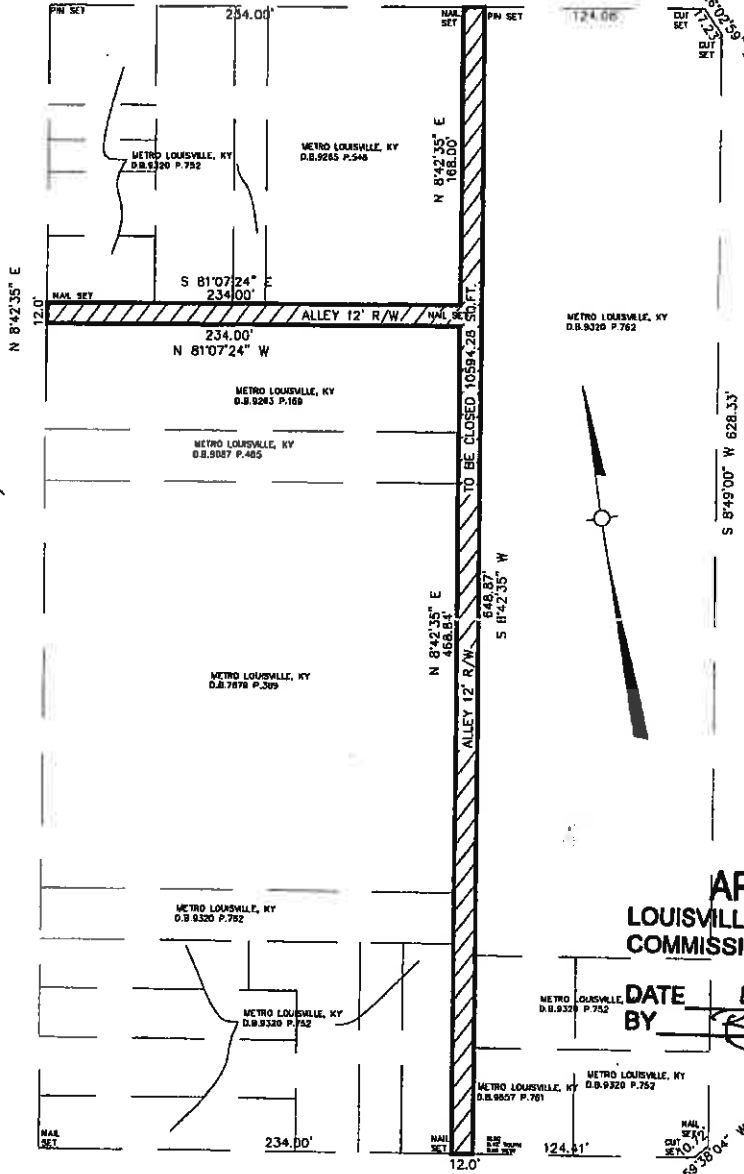
Location Map  
N.T.S

ZONED C-3  
DOWNTOWN FORM DISTRICT  
CORE BROADWAY OVERLAY  
DISTRICT

3RD STREET 60' R/W

2ND STREET R/W VARIES

NOTE: RELATED CASE  
PLAT BOOK 8 PAGE 28



APPROVED:  
LOUISVILLE METRO PLANNING  
COMMISSION

DATE BY 11/19/2015  
*[Signature]*

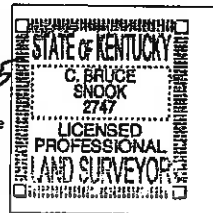
MUHAMMAD ALI BOULEVARD 60' R/W

Note: Alleys to be closed and consolidated with surrounding properties into a single parcel.

LAND SURVEYOR'S CERTIFICATE

I hereby certify that this survey as depicted hereon was performed under my supervision and was conducted under the standards for survey as defined under KAR 201-18:150 and is a Urban/Rural Class Survey, with an unadjusted closure of 1 part in 32,500. This Survey was performed using random traverse method and has been adjusted using least method of closure. Unless noted otherwise, the survey monuments which have been set for this survey are 1/2 inch iron pins of a length of 18 inches with an identification cap stamped with the Professional Land Surveyor # 2747. The bearings as shown on this plat have been noted to agree with second street per plans S 84°19'00\"/>

*[Signature]*  
C. Bruce Snook, PLS 2747



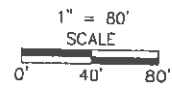
This property is not in a flood hazard area (ZONE X). This determination has been made by a personal review of flood map 21:11C0025E dated 12-05-08.

Note: A title examination may reveal roads and easements of record not shown hereon.



401 West Main Street, Suite 500  
Louisville, KY 40202  
PHONE (502)684-4118 FAX (502)589-3009

ALLEY CLOSING PLAT  
FOR  
LOUISVILLE METRO GOVERNMENT  
444 S. 5TH STREET  
LOUISVILLE, KY. 40202



Date: 3-04-2015

15STREETS/006

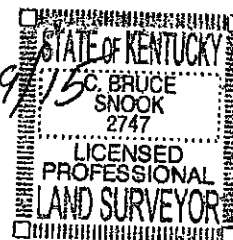
PROPOSED ALLEY CLOSINGS IN THE BLOCK BOUNDED BY THIRD AND SECOND STREET, LIBERTY STREET AND MUHAMMAD ALI BOULEVARD IN METRO LOUISVILLE, KENTUCKY.

Being an alley east of Third Street, running from Liberty Street to Muhammad Ali Boulevard and connecting with an alley south of Liberty Street running east from Third Street to an alley mentioned above and being more particularly described as follows:

Beginning at a nail at the intersection of the west line of the first alley east of Third Street with the south line of Liberty Street, said point also being South 81 degrees 07 minutes 24 seconds East 234.00 feet as measured along said south line from its intersection with the east line of Third Street; thence with said south line South 81 degrees 07 minutes 24 seconds East 12.00 feet to an iron pin at its intersection with the east line of said alley; thence with said east line South 08 degrees 42 minutes 35 seconds West 648.87 feet to its intersection with the north line of Muhammad Ali Boulevard; thence with said north line North 80 degrees 57 minutes 25 seconds West 12.00 feet to a nail at its intersection with the west line of the alley aforesaid; thence with said west line North 08 degrees 42 minutes 35 seconds East 468.84 feet to a nail at its intersection with the south line of the first alley south of Liberty Street; thence with said south line North 81 degrees 07 minutes 24 seconds West 234.00 feet to its intersection with the east line of Third Street; thence with said east line North 08 degrees 42 minutes 35 seconds East 12.00 feet to a nail at its intersection with the north line of said lastmentioned alley; thence with said north line South 81 degrees 07 minutes 24 seconds East 234.00 feet to its intersection with the west line of the firstmentioned alley; thence with said west line North 08 degrees 42 minutes 35 seconds East 168.00 feet to the point of beginning, containing 10,594.28 square feet.

RECEIVED  
APR 10 2015  
TRAINING &  
DESIGN SERVICES

*C. Bruce Snook* 4/09/15  
APPROVED:  
LOUISVILLE METRO PLANNING  
COMMISSION



DATE 11/19/2015  
BY *[Signature]*

15 STREET 1006