

Neighborhood Meeting – July 9, 2018

Docket No. 18ZONE1048

(Joel Dock, DPDS Case Manager)

PROPOSED ZONE CHANGE FROM R-4 TO PRD TO ALLOW A 28 ATTACHED SINGLE FAMILY HOME SUBDIVISION ON APPROXIMATELY 4.1 ACRES AT THE NORTHEAST QUADRANT OF TAYLORSVILLE RD. AND MCMAHAN BLVD. AT 4115, 4117 AND A PORTION OF 4121 TAYLORSVILLE RD.



C/O JEDA HOMES
GRADY STEWART

RECEIVED

JUL 23 2018

PLANNING &
DESIGN SERVICES

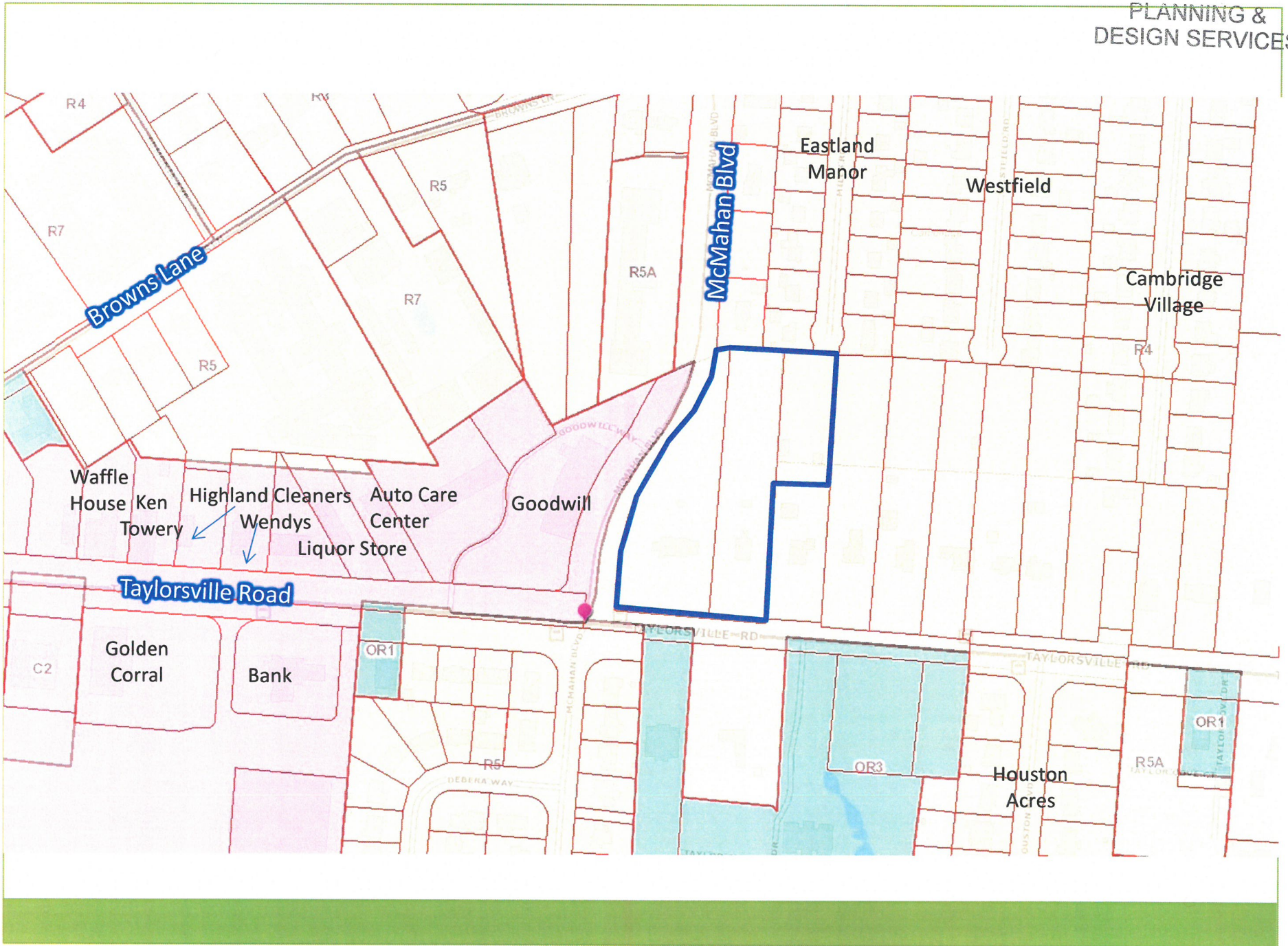
Attorneys: Bardenwerper Talbott & Roberts, PLLC

Land Planners, Landscape Architects & Engineers: Land Design & Development, Inc.

18 ZONE 1048

JUL 23 2018

PLANNING &
DESIGN SERVICES



RECEIVED

JUL 23 2018

PLANNING &
DESIGN SERVICES



18 ZONE 1048

RECEIVED

JUL 23 2018

PLANNING &
DESIGN SERVICES



78 ZONE 1048

RECEIVED

JUL 23 2018

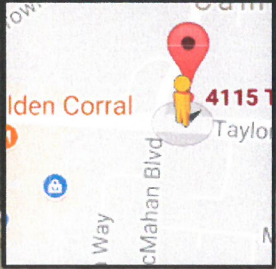
PLANNING &
DESIGN SERVICES



Taylorville Rd
Louisville, Kentucky

Google, Inc.

Street View - Oct 2015



Google

Image capture: Oct 2015 © 2017 Google United States Te

Existing house at 4115 Taylorville Rd.

RECEIVED

JUL 23 2018

PLANNING &
DESIGN SERVICES

N



Existing house at 4117 Taylorsville Rd.

18 ZONE 1048



RECEIVED

JUL 23 2018

PLANNING &
DESIGN SERVICES



View of Taylorsville Road looking east. Site is to the left (north).

RECEIVED

JUL 23 2018

PLANNING &
DESIGN SERVICES



View of site from Taylorsville Road looking north.



RECEIVED

JUL 23 2018

DES



GOODWILL

MCMAHAN BLVD

TAYLORSVILLE ROAD

KENTUCKY
HEALTHCARE
TRAINING
INSTITUTE

GRAPHIC SCALE

18 ZONE 1048

RECEIVED

JUL 23 2018

PLANNING & DESIGN SERVICES

PR
 TOT. ROW
 NET EXIS
 PRO FOR
 EXIS PRO
 PRO DEN
 TOT. F.A.
 BUIL
 PAR 2 :
 3 :
 PAR GA
 CO TOT.
 OPE REC
 OPE
 TOT.
 TOT. ILA
 ILA
 EXIS PRO
 INC



CAMBRIDGE CITY LIMITS
 LOUISVILLE/JEFFERSON COUNTY LIMITS

R-474
 Single-Family
 4125 Taylorsville Rd
 Louisville, KY 40225
 U.I. 5095 P.O. 0540

18 ZONE 1048

RECEIVED

JUL 29 2018

PLANNING &
DESIGN SERVICES



Entry Elevation

18 ZONE 1048



Perspective View

RECEIVED

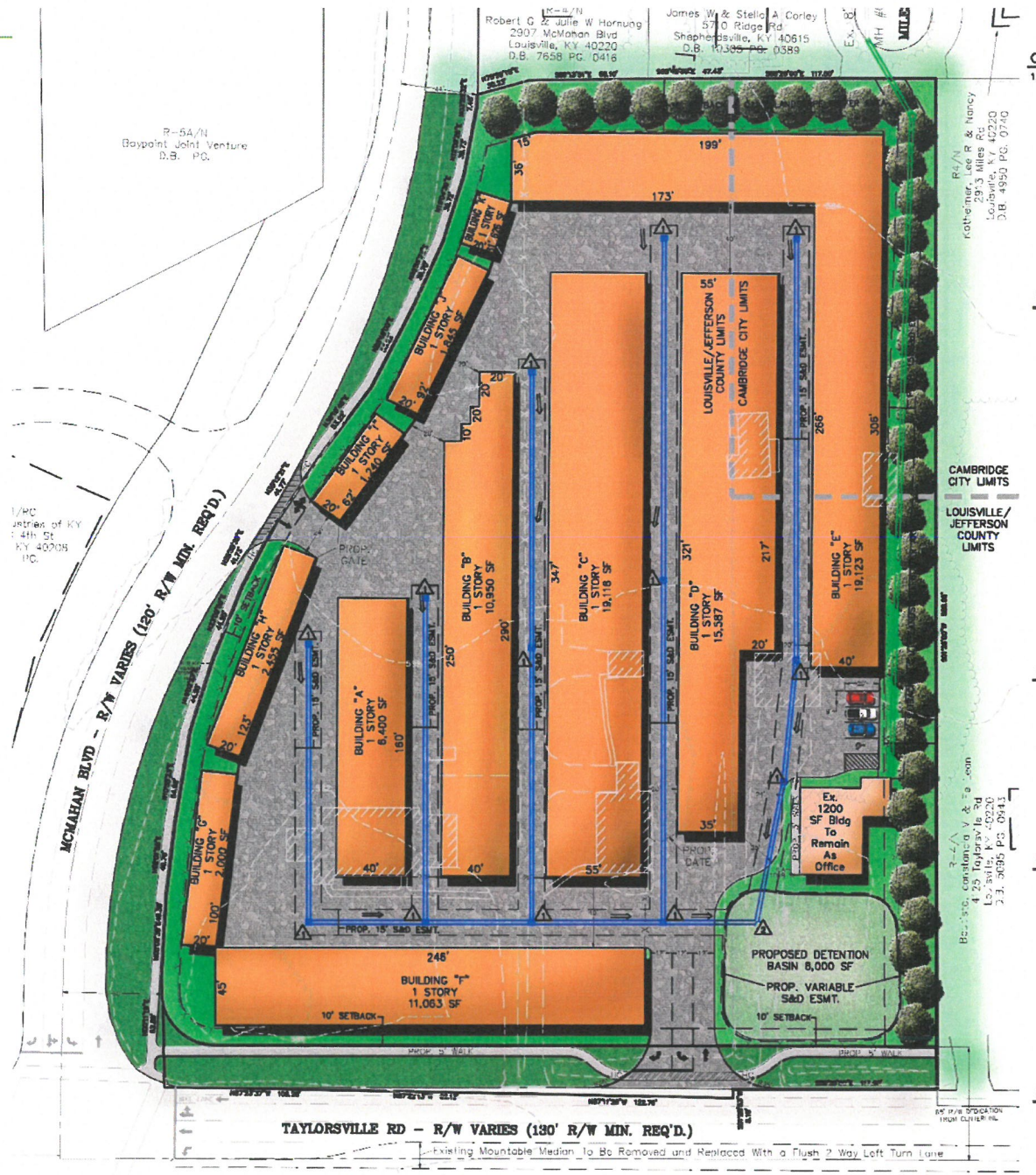
JUL 23 2018

PLANNING &
DESIGN SERVICES



Side Elevation

18 ZONE 1048



P-54/N
Baypoint Joint Venture
D.B. PG.

1/40
Jetties of KY
4th-5th
KY 40208
1/C

M-4/N
Robert G & Julie W Horning
2907 McManan Blvd
Louisville, KY 40220
D.B. 7658 PG. 0416

James W & Stella A Corley
570 Ridge Rd
Shepherdsville, KY 40615
D.B. 1036 PG. 0389

R-4/N
Kathemer, Lee R & Nancy
293 Miles Rd
Lebanon, KY 40220
D.B. 4953 PG. 0740

CAMBRIDGE CITY LIMITS

LOUISVILLE/JEFFERSON COUNTY LIMITS

TAYLORSVILLE RD - R/W VARIES (130' R/W MIN. REQ'D.)

Existing Mountable Median to Be Removed and Replaced With a Flush 2 Way Left Turn Lane

3-2-17
B.C. Consulting V & T's .com
1525 Taylorsville Rd
Lebanon, KY 40220
231-3035 PG. 0743

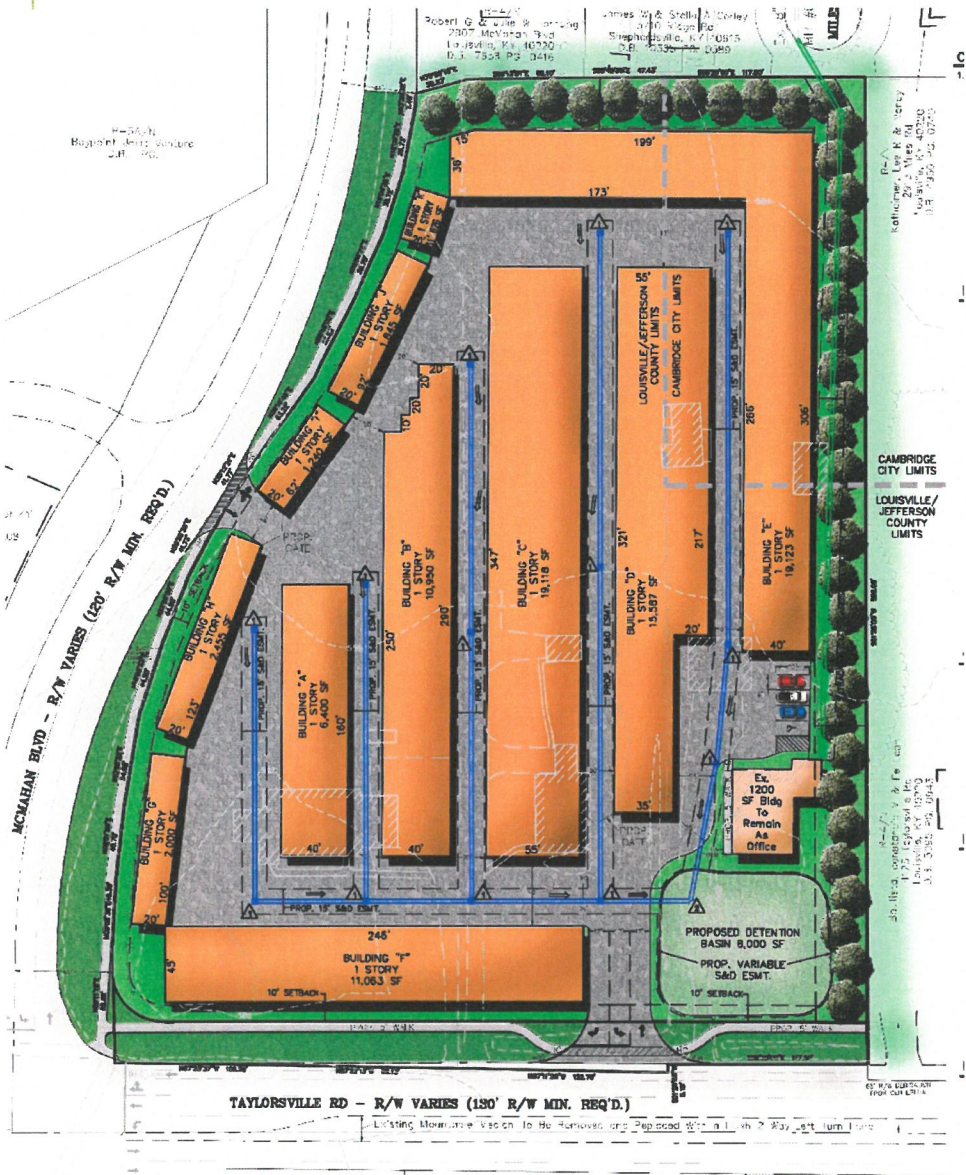
RECEIVED
JUL 23 2018
PLANNING &
DESIGN SERVICES

2017 proposed mini storage plan

18 ZONE 1048

RECEIVED

JUL 23 2018
PLANNING &
DESIGN SERVICES



2017 proposed mini storage plan



Current proposed single family plan

18 ZONE 1048