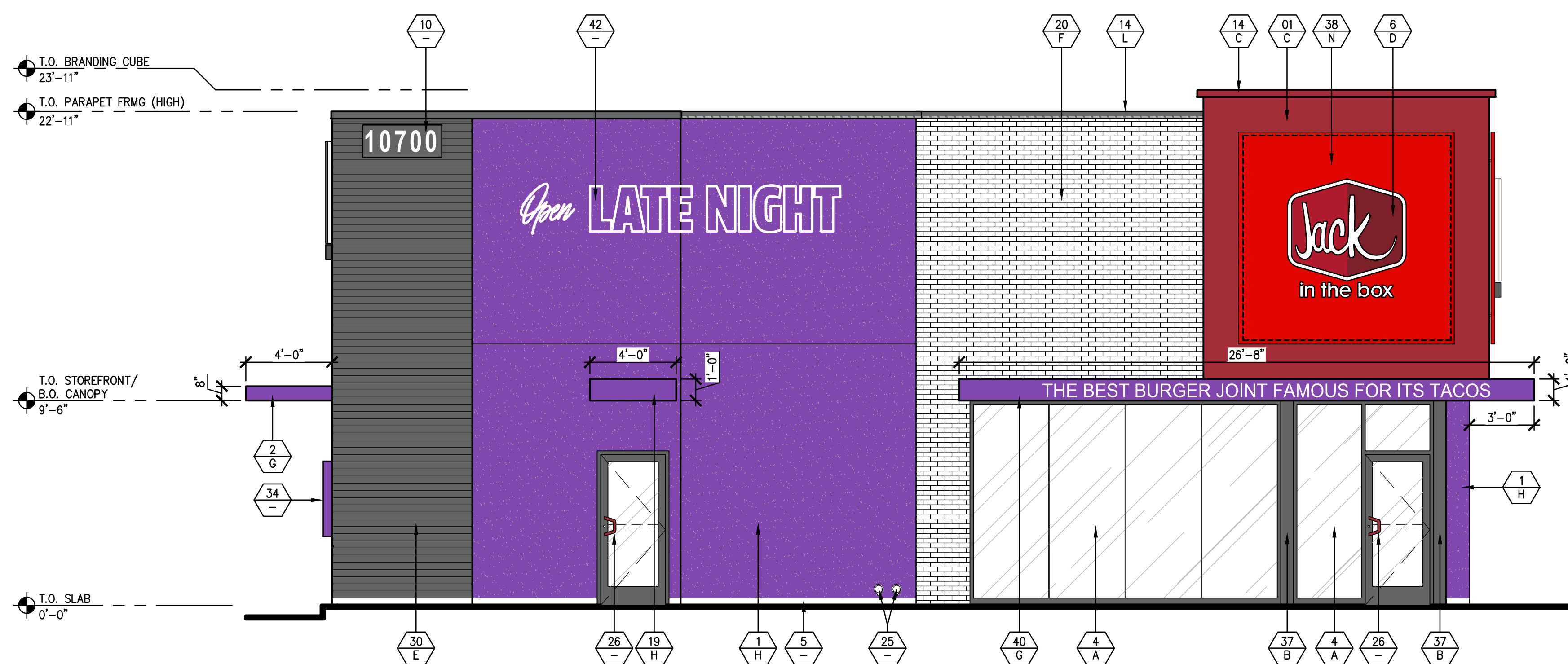




2 SIDE ELEVATION

SCALE: 1/4" = 1'-0"

SIGNAGE CALCULATIONS			
DESCRIPTION	QUANTITY	SQ. FT. PER SIGN	TOTALS
LOGO SIGN	1	22	22.0
ILLUMINATED "EMOJI" SIGN	1	33	33.0
CANOPY LETTERING	1	12	12.0
"OPEN LATE NIGHT" SIGN	1	26	26.0
TOTAL SIGNAGE S.F. THIS FACADE			93.0
SIDE FACADE S.F.			1829.0
SIGNAGE IS SHOWN FOR REFERENCE ONLY AND SHALL BE UNDER SEPARATE PERMIT SUBMITTAL BY JIB SIGN VENDOR.			



1 FRONT ELEVATION

SCALE: 1/4" = 1'-0"

SIGNAGE CALCULATIONS			
DESCRIPTION	QUANTITY	SQ. FT. PER SIGN	TOTALS
LOGO SIGN	1	25	25.0
CANOPY LETTERING	1	13	13.0
"OPEN LATE NIGHT" SIGN	1	26	26.0
TOTAL SIGNAGE S.F. THIS FACADE			64.0
FRONT FACADE S.F.			1234.0
SIGNAGE IS SHOWN FOR REFERENCE ONLY AND SHALL BE UNDER SEPARATE PERMIT SUBMITTAL BY JIB SIGN VENDOR.			

EXTERIOR FINISH SCHEDULE

NOT ALL ITEMS LISTED BELOW MAY BE USED, REFER TO ELEVATIONS.

- EXTERIOR CEMENT PLASTER-SAND FLOAT FINISH & INTEGRAL COLOR, SEE SPECIFICATIONS.
- DRIVE-THRU PRE-FAB CANOPY BY JIB VENDOR, SEE DETAIL 7/A9.5 (O.F.O.I).
- MOUNT LIGHTING FIXTURE WITHIN CANOPY, COORDINATE WITH VENDOR MOUNTING REQUIREMENTS.
- ALUMINUM STOREFRONT SYSTEM, SEE WINDOW TYPES & SPECIFICATIONS.
 - 1" CLEAR INSULATED GLASS 1" CLEAR INSULATED GLASS W/ SOLARBAN 70XL COATING
 - 1" CLEAR INSULATED PER LOCAL AHJ REQUIREMENTS ANTI GRAFFITI FILM W/ SOLARBAN 60 COATING
- EXPOSED CONCRETE CURB/ STEM WALL.
- INTERNALLY ILLUMINATED SIGN WITH WHITE LETTERS WITH "CLASSIC RED" BACKGROUND PROVIDED BY JIB VENDOR (O.F.O.I, UNDER SEPARATE SUBMITTAL).
- WALK-UP WINDOW, SEE A1.0 & A8.1.
- DRIVE-UP WINDOW, SEE A1.0 & A8.1.
- INTERNALLY ILLUMINATED ADDRESS, MIN. 12"H, WHITE LETTERS (OF-EQ8) AND (OF-EQ8B), OR AS REQUIRED PER LOCAL JURISDICTION (O.F.O.I, UNDER SEPARATE SUBMITTAL).
- MAIN ELECTRICAL SERVICE, SEE ELECTRICAL & CIVIL DWGS.
- CONTROL JOINT, SEE DETAIL 15/A9.3.
- HOLLOW METAL DOORS & FRAMES, MISCELLANEOUS TRIM.
- ALUMINUM COPING WITH FACATORY APPLIED FINISH, VERIFY W/ ROOF PLAN COPING AT LED ROPE LIGHTING LOCATION, SEE DETAILS 6, 7, & 8/A9.6.
- CO2 FILL BOX, SEE DETAIL 5/A9.3.
- BULK OIL FILL BOX (OPTION), SEE DETAIL 3/A9.3, VERIFY W/ JIB CONSTRUCTION IF REQUIRED.
- GREASE TANK RECOVERY TAP-IN (STANDARD), SEE DETAIL 4/A9.3.
- RECESSED, LOCKABLE, NON-FREEZE HOSE-BIB ENCLOSURE.
- CANTILEVERED CANOPY BY G.C.; WRAP FASCIA W/ SEAMLESS METAL CLADDING, SEE WALL SECTIONS.
- THIN-BRICK VENEER BY CORONADO STONE, SEE SPECIFICATIONS.
- DISPLAY POSTER PANEL & SURROUND, SEE DETAIL 9/A9.3.
- EXTERIOR WALL PACK LIGHT FIXTURE (OF-EQ28).
- ANCHOR-TITE STANDARD FASCIA BY METAL ERA, COLOR: CHARCOAL GRAY, SEE WALL SECTIONS ("W" VERSIONS ONLY).
- CORRUGATED BRANDING PANELS (O.F.O.I) (OF-EQ10) ("W" VERSIONS ONLY).
- DOWNSPOUT OUTLET, SEE DETAIL 7/A9.0.
- JIB CUSTOM STOREFRONT DOOR PULL, SEE HARDWARE SCHEDULES (OF-EQ13).
- HARDI-BOARD AT UNDERSIDE OF G.C. FRAMED CANOPY, SEE DETAILS ON SHEET A9.4, COLOR TO MATCH CANOPY COPING & FASCIA ("W" VERSIONS ONLY).
- ROOF TOP MECHANICAL EQUIPMENT BEYOND, SEE MECHANICAL & HOOD DWGS.
- VINYL LETTERING TO BE SINGLE DECAL (OF-EQ5B).
- HARDIE LAP BOARD SIDING, SEE SPECIFICATIONS.
- WINDOW SIGN (OF-EQ12).
- FROSTED GLAZING, SEE A8 SHEET SERIES FOR INFORMATION ("W" VERSIONS ONLY).
- "PAY HERE" BLADE SIGN (OF-EQ7A).
- "PICK-UP" BLADE SIGN (OF-EQ7B).
- GRAPHIC PANEL BY JIB SIGN VENDOR (O.F.O.I, UNDER SEPARATE SUBMITTAL).
- METAL GRAPHIC W/ HALO ILLUMINATION BY JIB SIGN VENDOR (O.F.O.I, UNDER SEPARATE SUBMITTAL).
- BRAKE METAL WRAP & COLUMN, SEE SHEET A1.0 & DETAILS ON A9.2.
- METAL PANEL VENEER SYSTEM BY JIB VENDOR, SEE SEE SECTIONS & DETAILS.
- GAS METER, SEE A1.0, MECHANICAL, & CIVIL DWGS.
- PRE-FABRICATED CANOPY FASCIA W/ INTERNALLY ILLUMINATED LETTERS, BY JIB VENDOR.
- ACCESS PANEL TO MATCH METAL PANEL VENEER, SEE ROOF PLAN & WALL SECTIONS FOR SPECIFICATION.
- INTERNALLY ILLUMINATED SIGN WITH WHITE LETTERS WITH "PURPLE" BACKGROUND PROVIDED BY JIB VENDOR (O.F.O.I, UNDER SEPARATE SUBMITTAL).

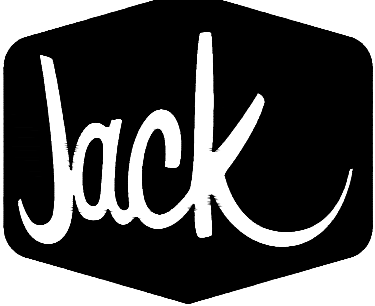
COLORS

NOT ALL ITEMS LISTED BELOW MAY BE USED, REFER TO ELEVATIONS.

- A. CLEAR ANODIZED ALUMINUM
- B. COLOR/ FINISH TO MATCH ADJACENT SURFACE
- C. SHERWIN WILLIAMS: SW 7588 "SHOW STOPPER"
- D. JIB LOGOS: WHITE TEXT - RED BACKGROUND
- E. HARDIE BOARD SIDING: SW 7068 "GRIZZLE GRAY"
- F. THIN-BRICK VENEER: WIRE CUT, "ICEBERG"
- G. CANOPY: SW 6832 "IMPULSIVE PURPLE"
- H. SHERWIN WILLIAMS: SW 6832 "IMPULSIVE PURPLE"
- I. CORRUGATED METAL: "POLAR WHITE"
- J. SHERWIN WILLIAMS: SW 7005 "PURE WHITE"
- K. CONCRETE: NATURAL/ GRAY
- L. COPING: RAL-7039 "QUARTZ GRAY"
- M. SHERWIN WILLIAMS: SW 7064 "PASSIVE GRAY"
- N. ACM PANELS: "CLASSIC RED"

EXTERIOR ELEVATION LEGEND

- MATERIAL/FINISH
- COLOR
- LED ROPE LIGHT FACE MOUNTED BY JIB VENDOR. SEE EXTERIOR ELEVATIONS, DETAILS, & ELECTRICAL DWGS.
- LED ROPE LIGHT IN COPING COVE BY JIB VENDOR. SEE EXTERIOR ELEVATIONS, DETAILS, & ELECTRICAL DWGS.



In the box

9357 SPECTRUM CENTER BLVD
SAN DIEGO, CA 92123

© 2022 Jack in the Box Inc.

These designs, drawings and specifications are the property of Jack in the Box Inc. and shall not be copied or reproduced without its previous written consent.

DATES

RELEASE: APRIL 2022

P.M. UPDATES: _____

SUBMITTAL DATE:

1: 07/22/22

2: _____

3: _____

BID: _____

CONSTRUCTION: _____

REVISIONS

NO.	DESCRIPTION

Copyright © 2022
APD Engineering & Architecture, P.C.
Drawing Attention
It is a violation of law for any person, unless acting under the direction of a Licensed Architect, Professional Engineer, Landscape Architect, or Land Surveyor to alter any item on this document in any way. Any alteration shall be documented as required by law by either the original creator of the drawing, or the person to whom the drawing was signed and the specific description of the alteration or revision.
[DO NOT SCALE PLANS]
These drawings shall not be used for construction unless they are checked or sealed by the original creator or the person to whom the drawing was signed. Contact APD & EA with any need for additional dimensions or clarifications.



SITE INFORMATION

BLDG TYPE: MK12_SSM

JIB #: #5003

ADDRESS:

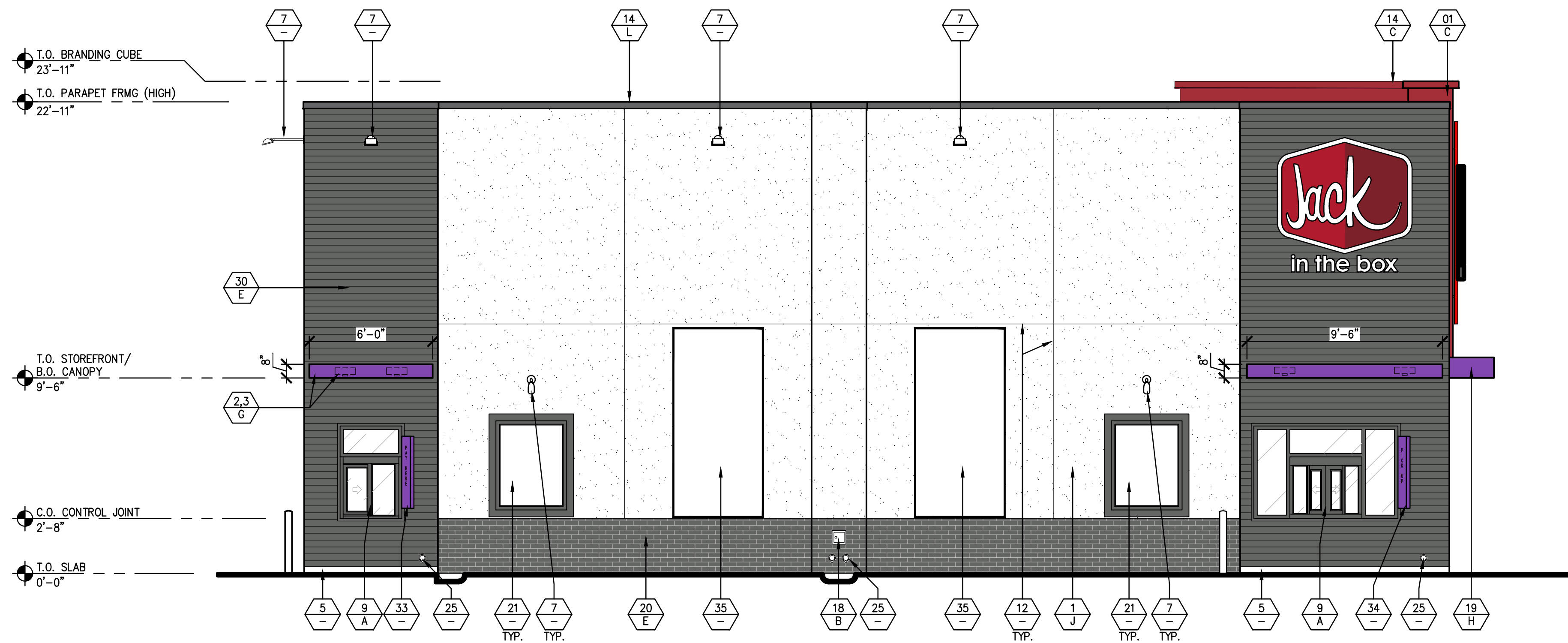
10700 DIXIE HWY

LOUISVILLE, KY 40272

DRAWN BY: NGS

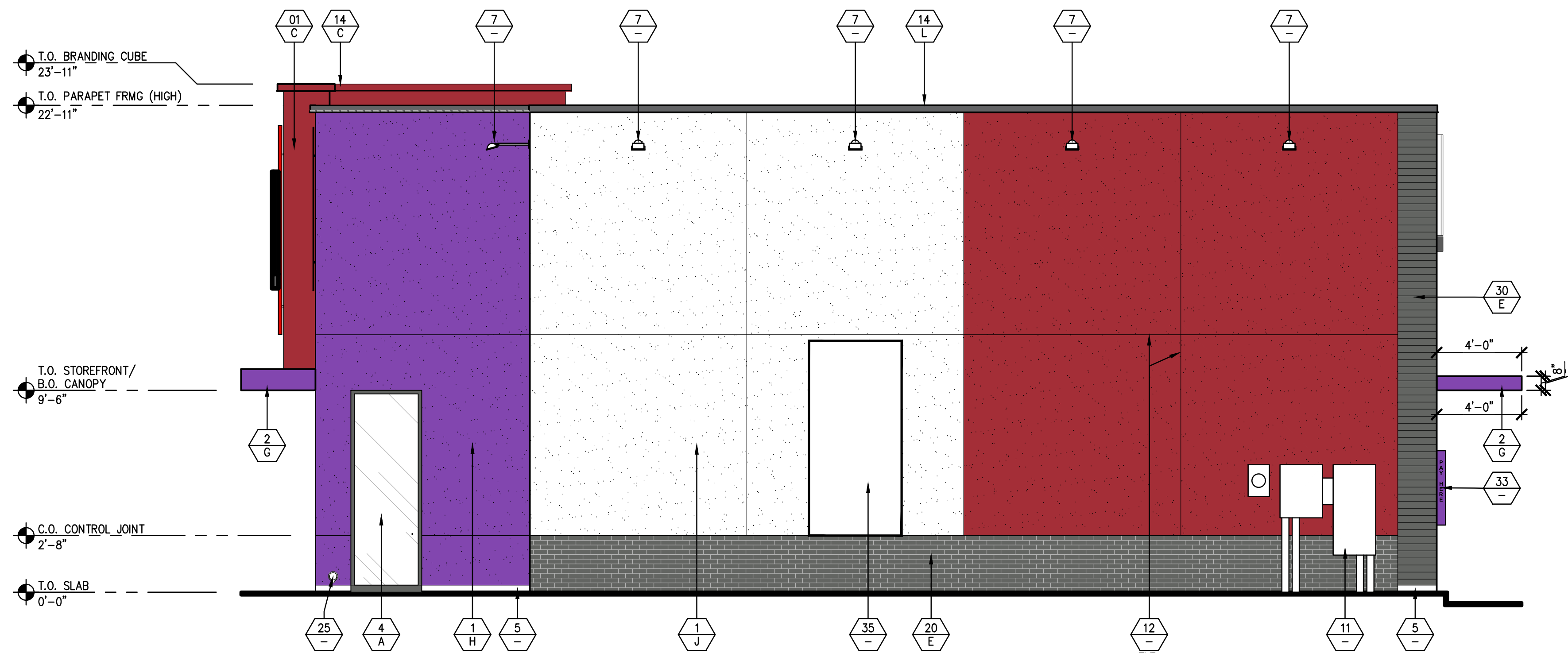
PROJECT #: 22-0185

SCALE: 1/4" = 1'-0"



2 DRIVE-THRU ELEVATION

SCALE: 1/4" = 1'-0"



1 REAR ELEVATION

SCALE: 1/4" = 1'-0"

SIGNAGE CALCULATIONS

DESCRIPTION	QUANTITY	SQ. FT. PER SIGN	TOTALS
DRIVE-THRU LOGO SIGN	1	34	34.0
DISPLAY POSTER	2	12	24.0
GRAPHIC PANEL	2	12	24.0
TOTAL SIGNAGE S.F. THIS FACADE			82.0
DRIVE-THRU FACADE S.F.			1278.0
SIGNAGE IS SHOWN FOR REFERENCE ONLY AND SHALL BE UNDER SEPARATE PERMIT SUBMITTAL BY JIB SIGN VENDOR.			

SIGNAGE CALCULATIONS

DESCRIPTION	QUANTITY	SQ. FT. PER SIGN	TOTALS
GRAPHIC PANEL	1	40	40.0
TOTAL SIGNAGE S.F. THIS FACADE			40.0
REAR FACADE S.F.			1208.0
SIGNAGE IS SHOWN FOR REFERENCE ONLY AND SHALL BE UNDER SEPARATE PERMIT SUBMITTAL BY JIB SIGN VENDOR.			

EXTERIOR FINISH SCHEDULE

NOT ALL ITEMS LISTED BELOW MAY BE USED, REFER TO ELEVATIONS.

- EXTERIOR CEMENT PLASTER-SAND FLOAT FINISH & INTEGRAL COLOR, SEE SPECIFICATIONS.
- DRIVE-THRU PRE-FAB CANOPY BY JIB VENDOR, SEE DETAIL 7/A9.5 (O.F.O.I).
- MOUNT LIGHTING FIXTURE WITHIN CANOPY, COORDINATE WITH VENDOR MOUNTING REQUIREMENTS.
- ALUMINUM STOREFRONT SYSTEM, SEE WINDOW TYPES & SPECIFICATIONS.
 - 1" CLEAR INSULATED GLASS
 - 1" CLEAR INSULATED GLASS W/ SOLARBAN 70XL COATING
 - 1" CLEAR INSULATED PER LOCAL AHJ REQUIREMENTS
 - ANTI GRAFFITI FILM W/ SOLARBAN 60 COATING
- EXPOSED CONCRETE CURB/ STEM WALL.
- INTERNALLY ILLUMINATED SIGN WITH WHITE LETTERS WITH "CLASSIC RED" BACKGROUND PROVIDED BY JIB VENDOR (O.F.O.I, UNDER SEPARATE SUBMITTAL).
- WALK-UP WINDOW, SEE A1.0 & A8.1.
- DRIVE-UP WINDOW, SEE A1.0 & A8.1.
- INTERNALLY ILLUMINATED ADDRESS, MIN. 12"H, WHITE LETTERS (OF-EQ8) AND (OF-EQ8B), OR AS REQUIRED PER LOCAL JURISDICTION (O.F.O.I, UNDER SEPARATE SUBMITTAL).
- MAIN ELECTRICAL SERVICE, SEE ELECTRICAL & CIVIL DWGS.
- CONTROL JOINT, SEE DETAIL 15/A9.3.
- HOLLOW METAL DOORS & FRAMES, MISCELLANEOUS TRIM.
- ALUMINUM COPING WITH FACTORY APPLIED FINISH, VERIFY W/ ROOF PLAN COPING AT LED ROPE LIGHTING LOCATION, SEE DETAILS 6, 7, & 8/A9.6.
- CO2 FILL BOX, SEE DETAIL 5/A9.3.
- BULK OIL FILL BOX (OPTION), SEE DETAIL 3/A9.3. VERIFY W/ JIB CONSTRUCTION IF REQUIRED.
- GREASE TANK RECOVERY TAP-IN (STANDARD), SEE DETAIL 4/A9.3.
- RECESSED, LOCKABLE, NON-FREEZE HOSE-BIB ENCLOSURE.
- CANTILEVERED CANOPY BY G.C.; WRAP FASCIA W/ SEAMLESS METAL CLADDING, SEE WALL SECTIONS.
- THIN-BRICK VENEER BY CORONADO STONE, SEE SPECIFICATIONS.
- DISPLAY POSTER PANEL & SURROUND, SEE DETAIL 9/A9.3.
- EXTERIOR WALL PACK LIGHT FIXTURE (OF-EQ28).
- ANCHOR-TITE STANDARD FASCIA BY METAL ERA, COLOR: CHARCOAL GRAY, SEE WALL SECTIONS ("W" VERSIONS ONLY).
- CORRUGATED BRANDING PANELS (O.F.O.I) (OF-EQ10) ("W" VERSIONS ONLY).
- DOWNSPOUT OUTLET, SEE DETAIL 7/A9.0.
- JIB CUSTOM STOREFRONT DOOR PULL, SEE HARDWARE SCHEDULES (OF-EQ13).
- HARDI-BOARD AT UNDERSIDE OF G.C. FRAMED CANOPY, SEE DETAILS ON SHEET A9.4, COLOR TO MATCH CANOPY COPING & FASCIA ("W" VERSIONS ONLY).
- ROOF TOP MECHANICAL EQUIPMENT BEYOND, SEE MECHANICAL & HOOD DWGS.
- VINYL LETTERING TO BE SINGLE DECAL (OF-EQ5B).
- HARDIE LAP BOARD SIDING, SEE SPECIFICATIONS.
- WINDOW SIGN (OF-EQ12).
- FROSTED GLAZING, SEE A8 SHEET SERIES FOR INFORMATION ("W" VERSIONS ONLY).
- "PAY HERE" BLADE SIGN (OF-EQ7A).
- "PICK-UP" BLADE SIGN (OF-EQ7B).
- GRAPHIC PANEL BY JIB SIGN VENDOR (O.F.O.I, UNDER SEPARATE SUBMITTAL).
- METAL GRAPHIC W/ HALO ILLUMINATION BY JIB SIGN VENDOR (O.F.O.I, UNDER SEPARATE SUBMITTAL).
- BRAKE METAL WRAP & COLUMN, SEE SHEET A1.0 & DETAILS ON A9.2.
- METAL PANEL VENEER SYSTEM BY JIB VENDOR, SEE SEE SECTIONS & DETAILS.
- GAS METER, SEE A1.0, MECHANICAL, & CIVIL DWGS.
- PRE-FABRICATED CANOPY FASCIA W/ INTERNALLY ILLUMINATED LETTERS, BY JIB VENDOR.
- ACCESS PANEL TO MATCH METAL PANEL VENEER, SEE ROOF PLAN & WALL SECTIONS FOR SPECIFICATION.
- INTERNALLY ILLUMINATED SIGN WITH WHITE LETTERS WITH "PURPLE" BACKGROUND PROVIDED BY JIB VENDOR (O.F.O.I, UNDER SEPARATE SUBMITTAL).

COLORS

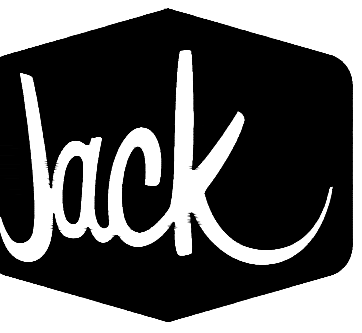
NOT ALL ITEMS LISTED BELOW MAY BE USED, REFER TO ELEVATIONS.

- A. CLEAR ANODIZED ALUMINUM
- B. COLOR/ FINISH TO MATCH ADJACENT SURFACE
- C. SHERWIN WILLIAMS: SW 7588 "SHOW STOPPER"
- D. JIB LOGOS: WHITE TEXT - RED BACKGROUND
- E. HARDIE BOARD SIDING: SW 7068 "GRIZZLE GRAY"
- F. THIN-BRICK VENEER: WIRE CUT, "ICEBERG"
- G. CANOPY: SW 6832 "IMPULSIVE PURPLE"
- H. SHERWIN WILLIAMS: SW 6832 "IMPULSIVE PURPLE"
- I. CORRUGATED METAL: "POLAR WHITE"
- J. SHERWIN WILLIAMS: SW 7005 "PURE WHITE"
- K. CONCRETE: NATURAL/ GRAY
- L. COPING: RAL-7039 "QUARTZ GRAY"
- M. SHERWIN WILLIAMS: SW 7064 "PASSIVE GRAY"
- N. ACM PANELS: "CLASSIC RED"

EXTERIOR ELEVATION LEGEND

- MATERIAL/FINISH
- COLOR

- LED ROPE LIGHT FACE MOUNTED BY JIB VENDOR. SEE EXTERIOR ELEVATIONS, DETAILS, & ELECTRICAL DWGS.
- LED ROPE LIGHT IN COPING COVE BY JIB VENDOR. SEE EXTERIOR ELEVATIONS, DETAILS, & ELECTRICAL DWGS.



In the box

9357 SPECTRUM CENTER BLVD
SAN DIEGO, CA 92123
© 2022 Jack in the Box Inc.
These designs, drawings and specifications are the property of Jack in the Box Inc. and shall not be copied or reproduced without its previous written consent.

DATES

RELEASE: APRIL 2022

P.M. UPDATES: _____

SUBMITTAL DATE:

1: 07/22/22

2: _____

3: _____

BID: _____

CONSTRUCTION: _____

REVISIONS

NO.	DESCRIPTION

Copyright © 2022
APD Engineering & Architecture, P.C.
1000
Drawing Attention

It is a violation of law for any person, unless acting under the direction of a licensed Architect, Professional Engineer, Landscape Architect, or Land Surveyor to alter any item on this document in any way, and the person who alters this document is required to file with the local authority having jurisdiction a copy of the altered drawing and the original drawing. This document is the property of APD Engineering & Architecture, P.C. and shall not be copied or reproduced without its previous written consent.

DO NOT SCALE PLANS
These drawings can match or exceed the actual paper or board. Therefore, scaling of the drawing may be inaccurate. Contact APD E&A with any need for additional dimensions or clarifications.

APD
ENGINEERING
ARCHITECTURE
619 Fishers Run Victor, NY 14564
585.742.2222 www.apd.com

SITE INFORMATION

BLDG TYPE: MK12_SSM

JIB #: #5003

ADDRESS:
10700 DIXIE HWY
LOUISVILLE, KY 40272

DRAWN BY: NGS

PROJECT #: 22-0185

SCALE: 1/4" = 1'-0"

EXTERIOR ELEVATIONS
SIDE-PUSH SMALL
A4.1