

DATE	#	REMARKS	ISSUANCE:
11/01/2021	A	ISSUED FOR PD PRICING	
03/10/2023	C	ISSUED FOR DD PRICING	

PROJECT:

**HOUSE FOODS AMERICA**  
 6660 LEWIS LANE, LOUISVILLE, KY 40272

**KY NEW FACTORY PROJECT**

SHEET TITLE:  
**MASTER BUILDING ELEVATIONS**

PROJECT MANAGER: KA/AEPC	PROJECT DESIGNER: KA/AEPC
DRAWN BY: Author	CHECKED BY: Checker
PROJECT NO.: 80-22932	SCALE: As indicated
SHEET:	

**A-211**

NOT FOR CONSTRUCTION  
 22-DDP-0132

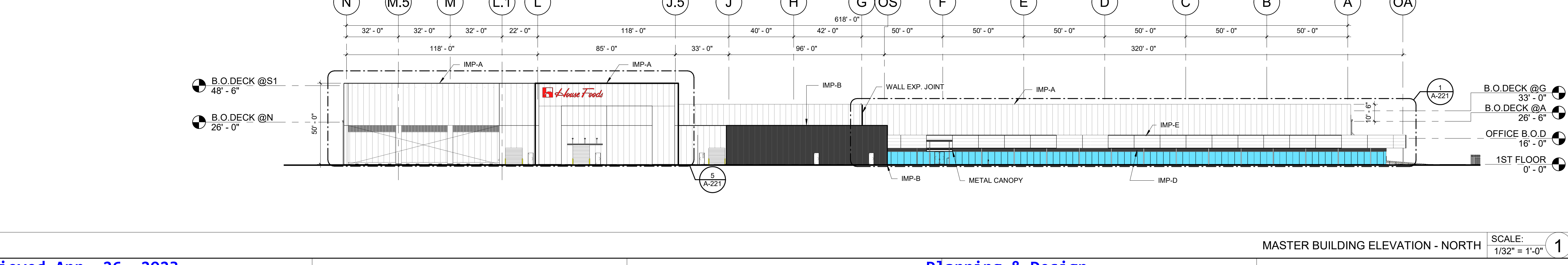
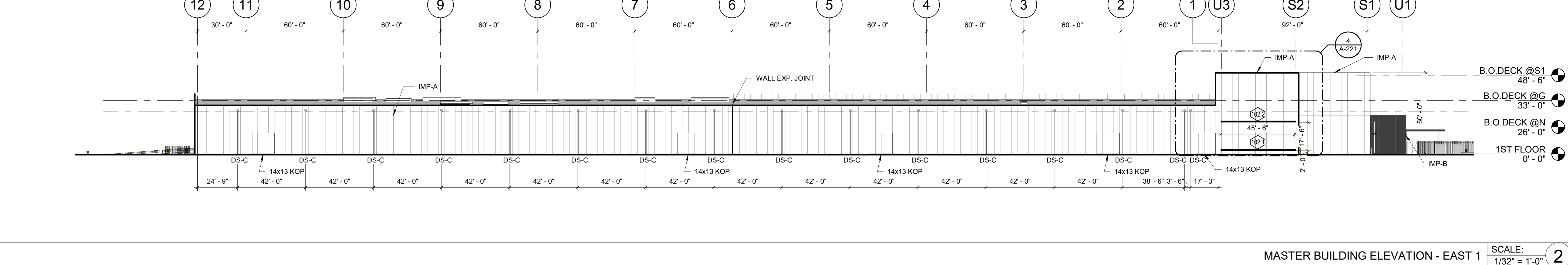
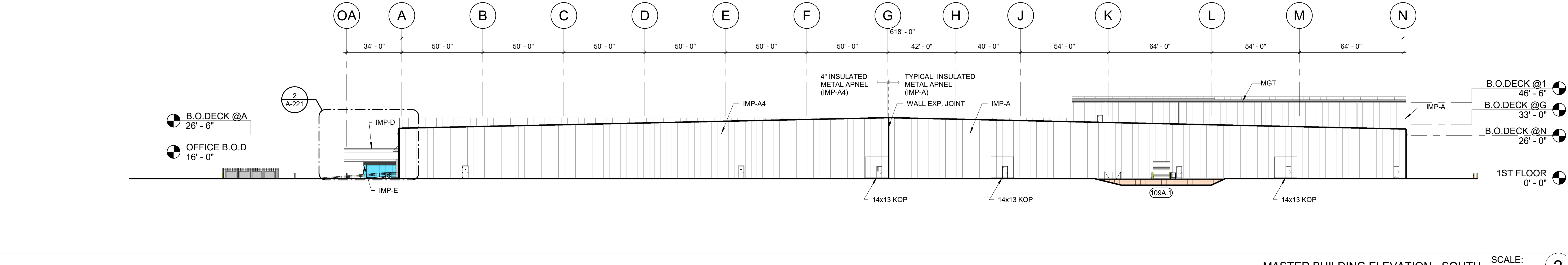
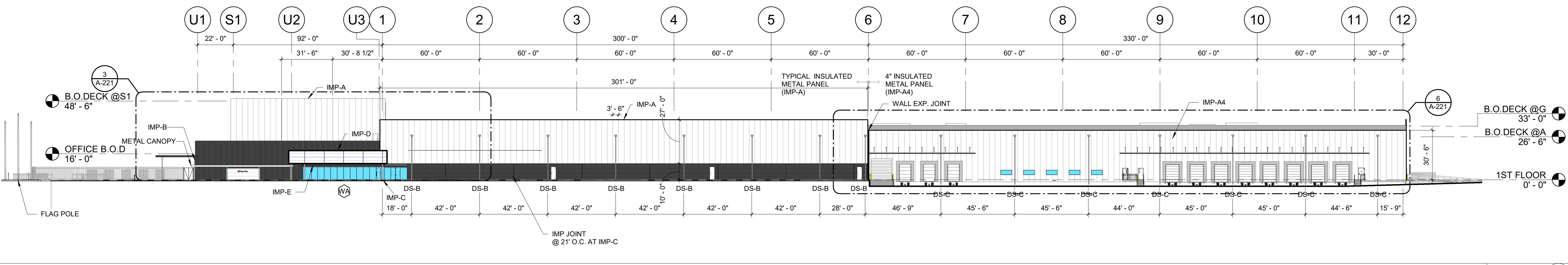
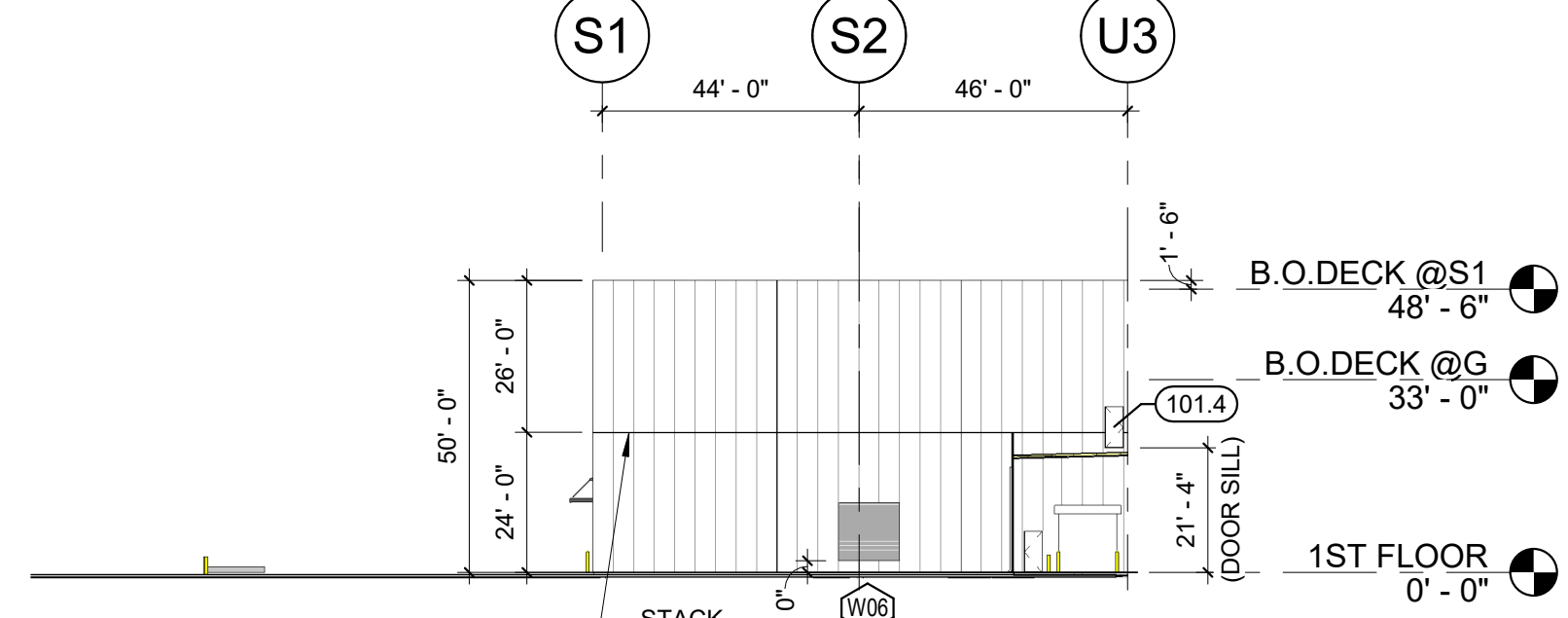
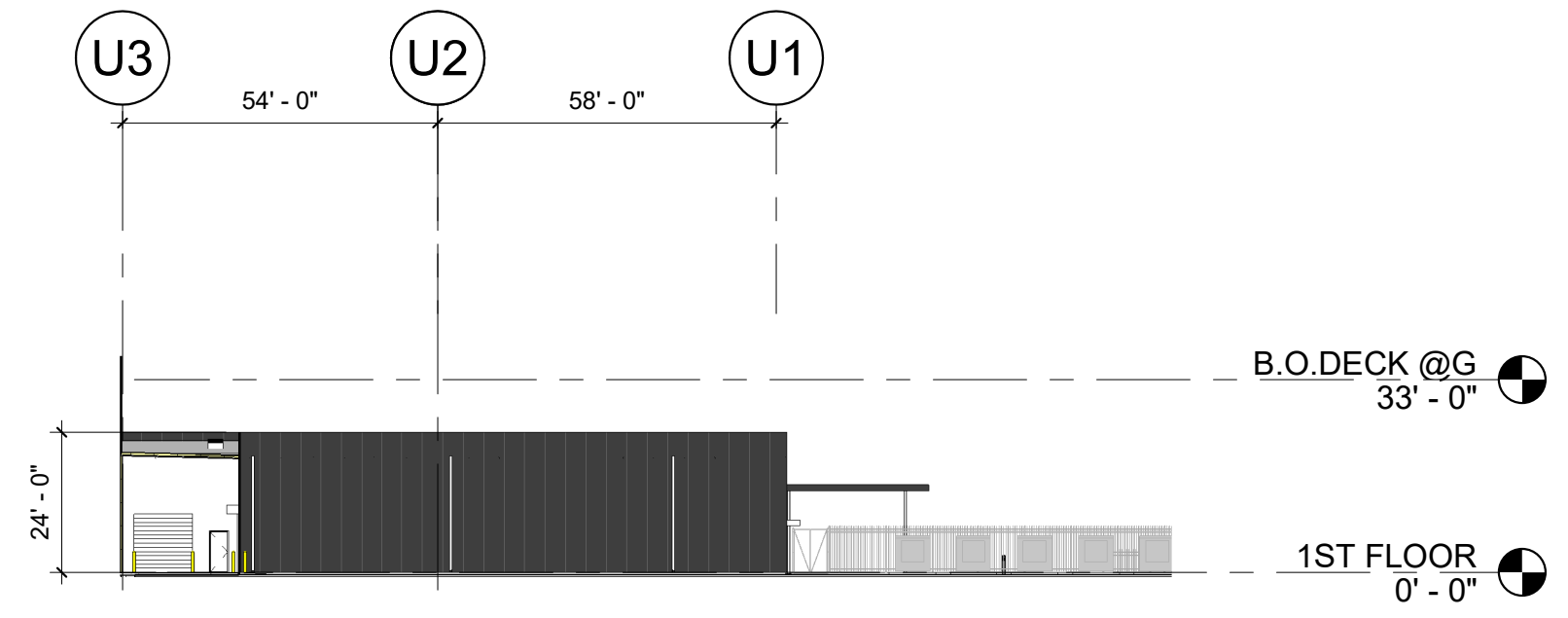
GENERAL NOTES - ELEVATIONS

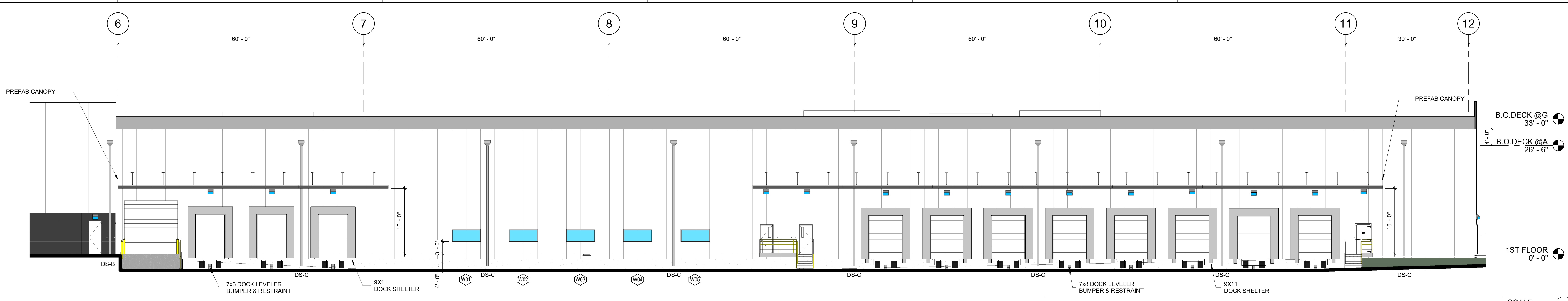
- a. IN NO CASE SHALL WORKING DIMENSIONS BE SCALED FROM ELEVATIONS. CONTRACTOR SHALL VERIFY ALL DIMENSIONS IN FIELD. ARCHITECT SHALL BE NOTIFIED OF ANY DISCREPANCIES BETWEEN DRAWINGS AND FIELD CONDITION. ARCHITECTURAL AND ENGINEERING DRAWINGS OR MISSING DIMENSIONS FOR CORRECTION BEFORE PROCEEDING WITH WORK.
- b. ALL PAINT COLOR CHANGES TO OCCUR AT INSIDE CORNERS U.N.O.
- c. FOR BUILDING SIGNAGE, GC TO COORDINATE W/ A VECTOR FILE OF THE LOGO PROVIDED DIRECTLY FROM OWNER AND SHALL NOT COMMENCE WORK PRIOR TO OWNER'S APPROVAL.

INSULATED METAL PANEL LEGEND:  
 SEE SPECIFICATION FOR MORE DETAILS.  
 INSULATED METAL PANEL TO BE BY METSPAN OR APPROVED EQUAL

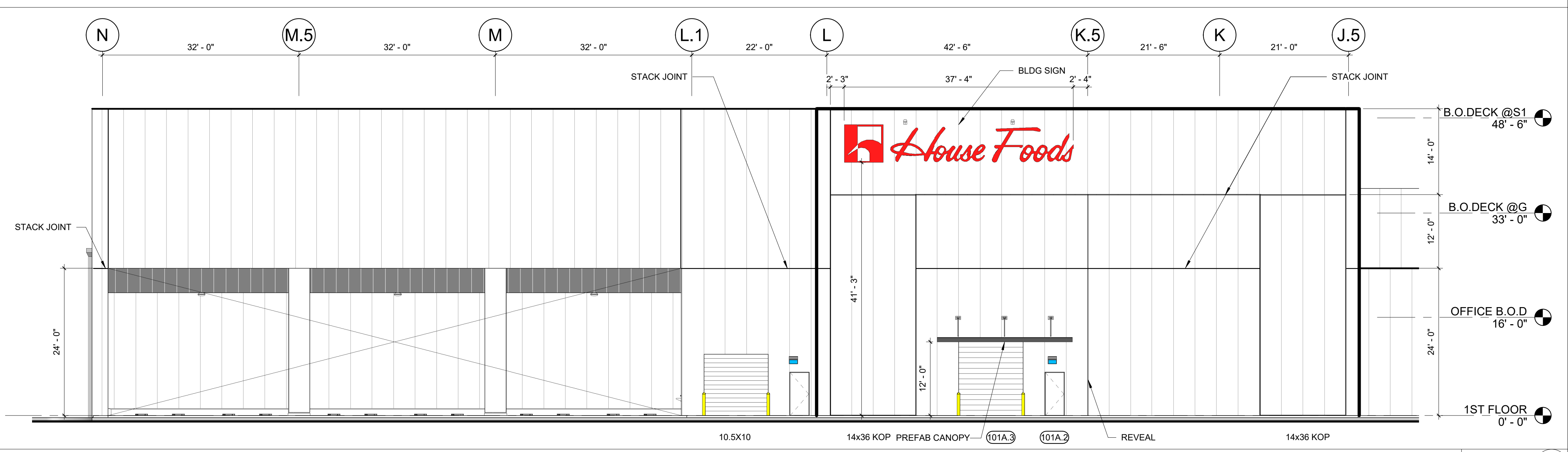
- IMP-A (VERTICAL) 2 1/2" THICK X 42" WIDE OF MESA NON-DIRECTIONAL EMBOSSED COLOR: WHITE REMARKS: TYPICAL IMP AT PLANT BUILDING
- IMP-A4 (VERTICAL) 4" THICK X 42" WIDE OF MESA NON-DIRECTIONAL EMBOSSED COLOR: WHITE REMARKS: AT COLD STORAGE EXTERIOR WALL
- IMP-B (VERTICAL) 2 1/2" THICK X 42" WIDE OF MESA NON-DIRECTIONAL EMBOSSED COLOR: BLACK REMARKS: AT MECHANICAL ROOM
- IMP-C (HORIZONTAL) 2 1/2" THICK X 30" WIDE OF STRIATED NON-DIRECTIONAL EMBOSSED COLOR: BLACK REMARKS: NORTH WALL WHERE RECESSED
- IMP-D (HORIZONTAL) 2 1/2" THICK X 24" WIDE OF ARCHITECTURAL HORIZONTAL UNEMBOSSED COLOR: WHITE REMARKS: OFFICE AREA
- IMP-E (HORIZONTAL) 2 1/2" THICK X 24" WIDE OF ARCHITECTURAL HORIZONTAL UNEMBOSSED COLOR: BLACK REMARKS: OFFICE AREA
- IMP-P FOR INTERIOR (VERTICAL) 4" THICK X 44 1/2" WIDE OF PARTITION

NOTE: EXACT COLOR SELECTION TO BE MADE BY ARCHITECT LATER.

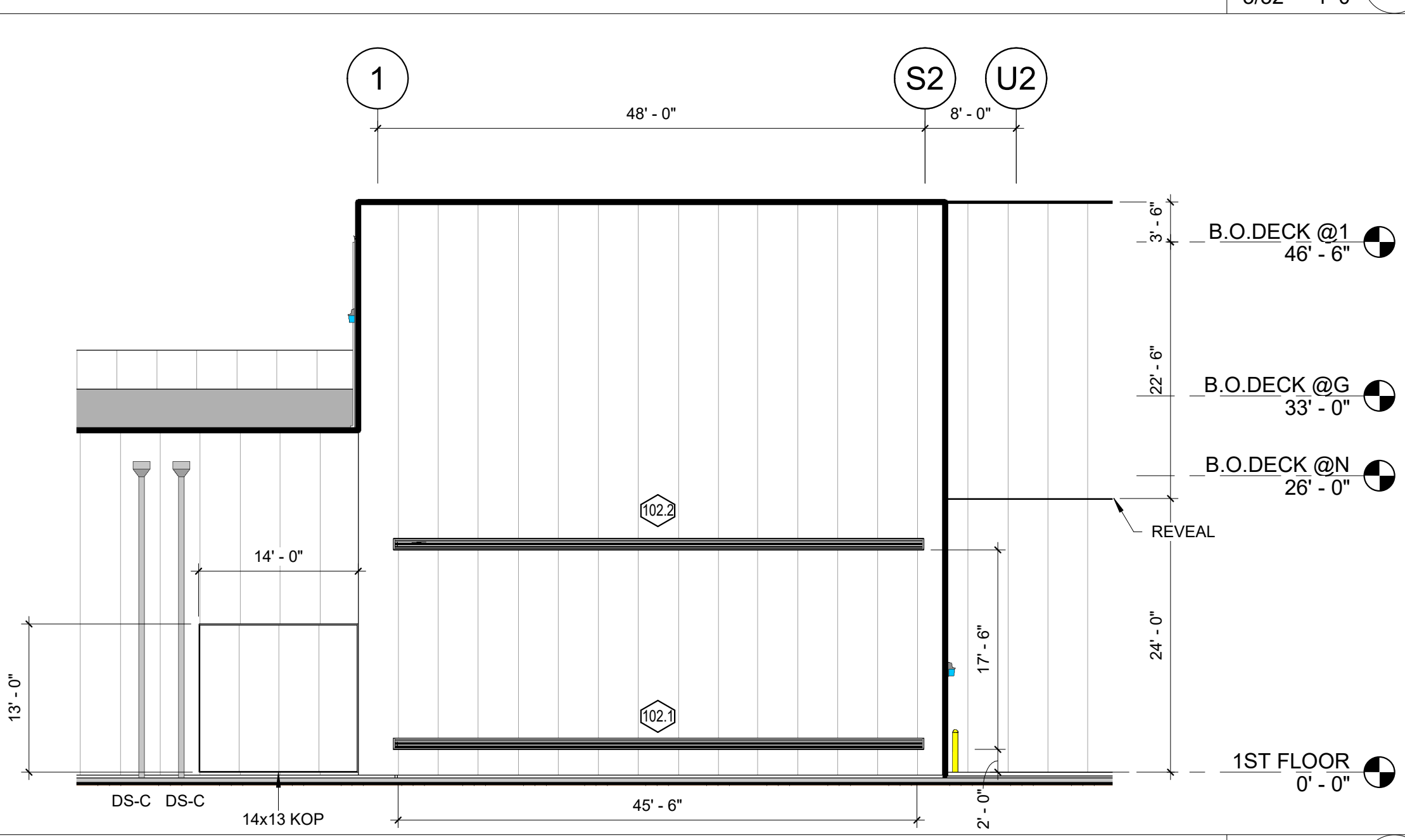




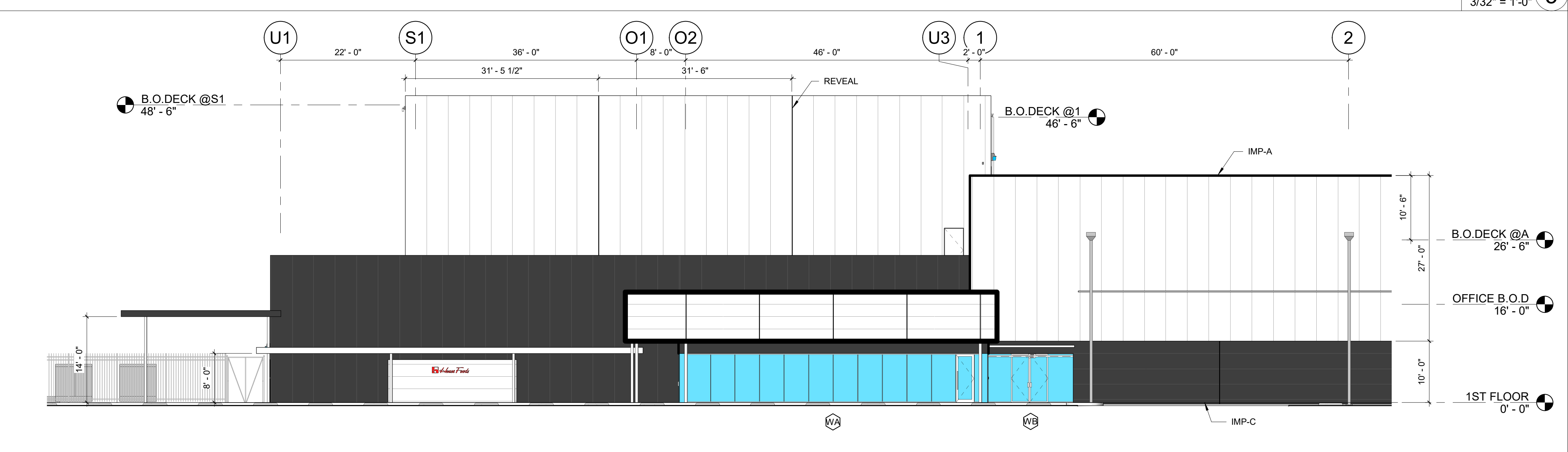
PARTIAL BUILDING ELEVATION - WEST 1 SCALE: 3/32" = 1'-0" 6



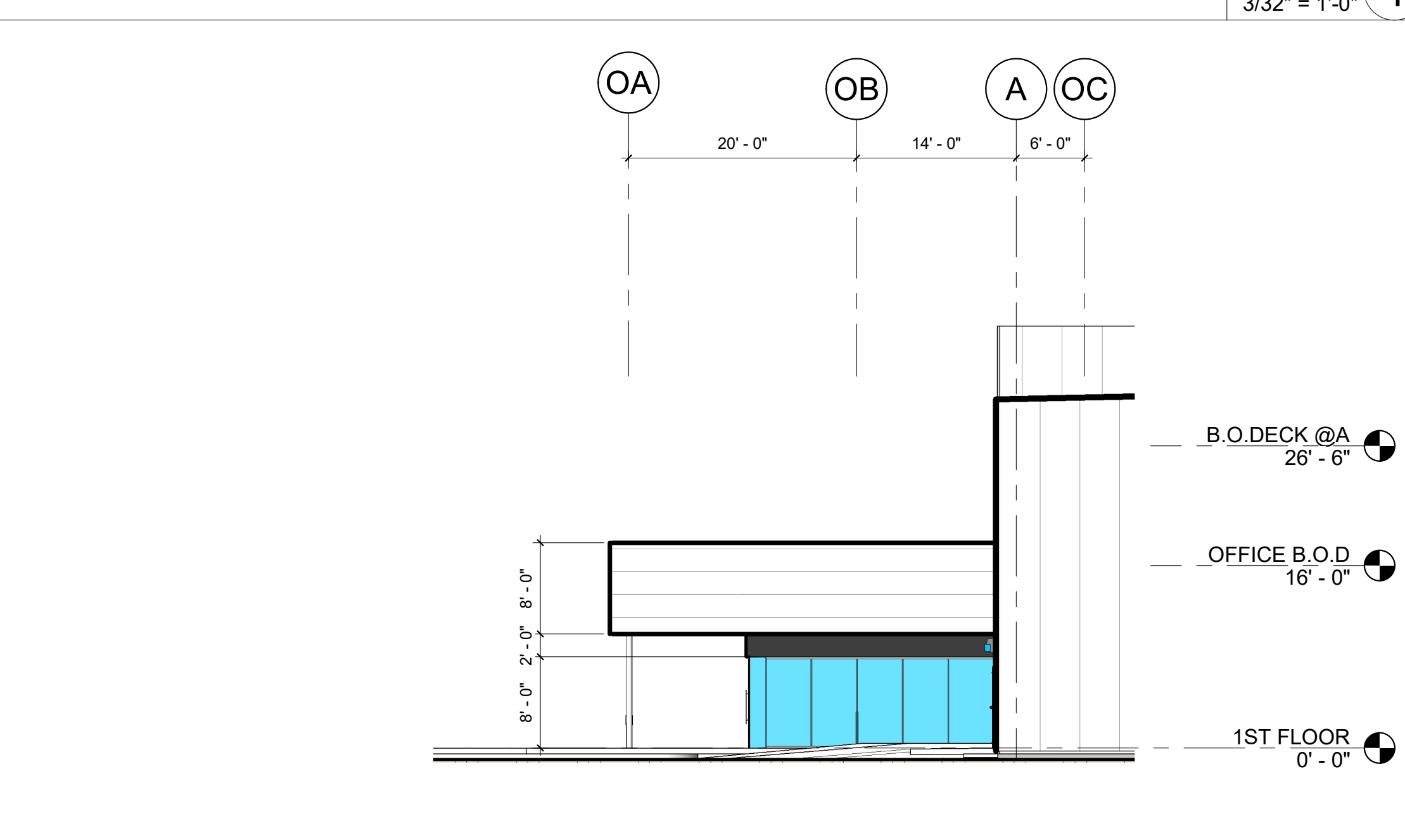
PARTIAL BUILDING ELEVATION - NORTH 2 SCALE: 3/32" = 1'-0" 5



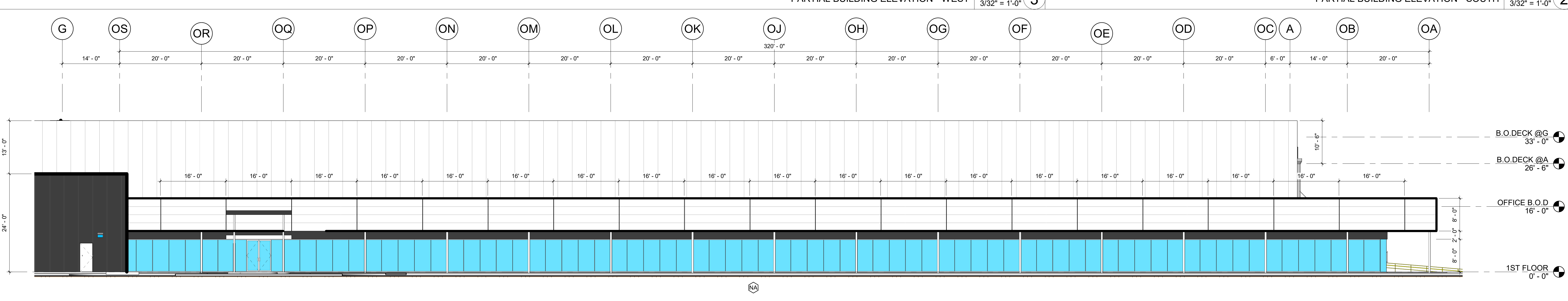
PARTIAL BUILDING ELEVATION - EAST SCALE: 3/32" = 1'-0" 4



PARTIAL BUILDING ELEVATION - WEST SCALE: 3/32" = 1'-0" 3



PARTIAL BUILDING ELEVATION - SOUTH SCALE: 3/32" = 1'-0" 2



PARTIAL BUILDING ELEVATION - NORTH 1 SCALE: 3/32" = 1'-0" 1

PRINTED ON: 2023/03/13 14:19:54

Received Apr. 26, 2023

Planning & Design