

RECEIVED

MAY 17 2018

PLANNING &
DESIGN SERVICES

CASE #17ZONE1081

LEGAL DESCRIPTION

FOR CHANGE OF ZONING FROM R4 TO R6

That certain parcel of land situated in the County of Jefferson, Commonwealth of Kentucky, located south of Broad Run Parkway and East of Bardstown Road, Being a portion of the property recorded in Deed Book 9695, Page 850, in the office of Clerk Jefferson County, Kentucky and more particularly described as follows:

Commence at the north west corner of the property owned by 21st Century Parks, INC (D.B. 9498, PG. 335) thence with the western line of same S 21°31'39" E for 645.23' to a point said point being the northwest corner of the property owned by 21st Century Parks Endowment, INC and recorded in Deed Book 9695, Page 850;

Thence with the western line of said 21st Century property S 21°31'39" E for 60.62' to a point;

Thence leaving said western line S 61°09'30" W for 55.46' to the **True Point of Beginning**;

Thence S 21°28'38" E a distance of 581.64 to a point;

Thence with a curve to the right having a radius of 975.00' a chord length of 364.91' and a chord bearing of S 10°41'29" E to a point;

Thence with a curve to the right having a radius of 25.00' a chord length of 36.27' and a chord bearing of S 46°36'10" E to a point;

Thence N 86°53'20" W for 90.78' to a point;

Thence with a curve to the left having a radius of 525.00' a chord length of 247.90' and a chord bearing of S 79°27'19" W to a point;

Thence S 65°47'57" W for 177.58' to a point;

Thence with a curve to the left having a radius of 1025.00' a chord length of 396.77' and a chord bearing of S 54°38'22" W to a point;

Thence S 43°28'46" W for 82.13' to a point;

Thence N 12°53'15" W for 268.96' to a point;

Thence N 24°00'02" W for 582.78' to a point;

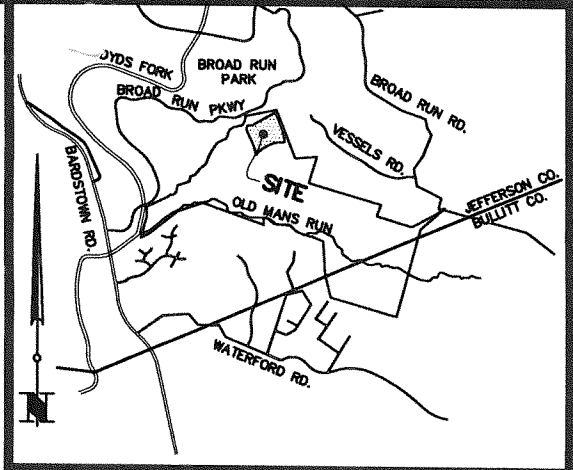
Thence N 08°07'07" E for 104.09' to a point;

Thence N 79°47'47" E for 187.79' to a point;

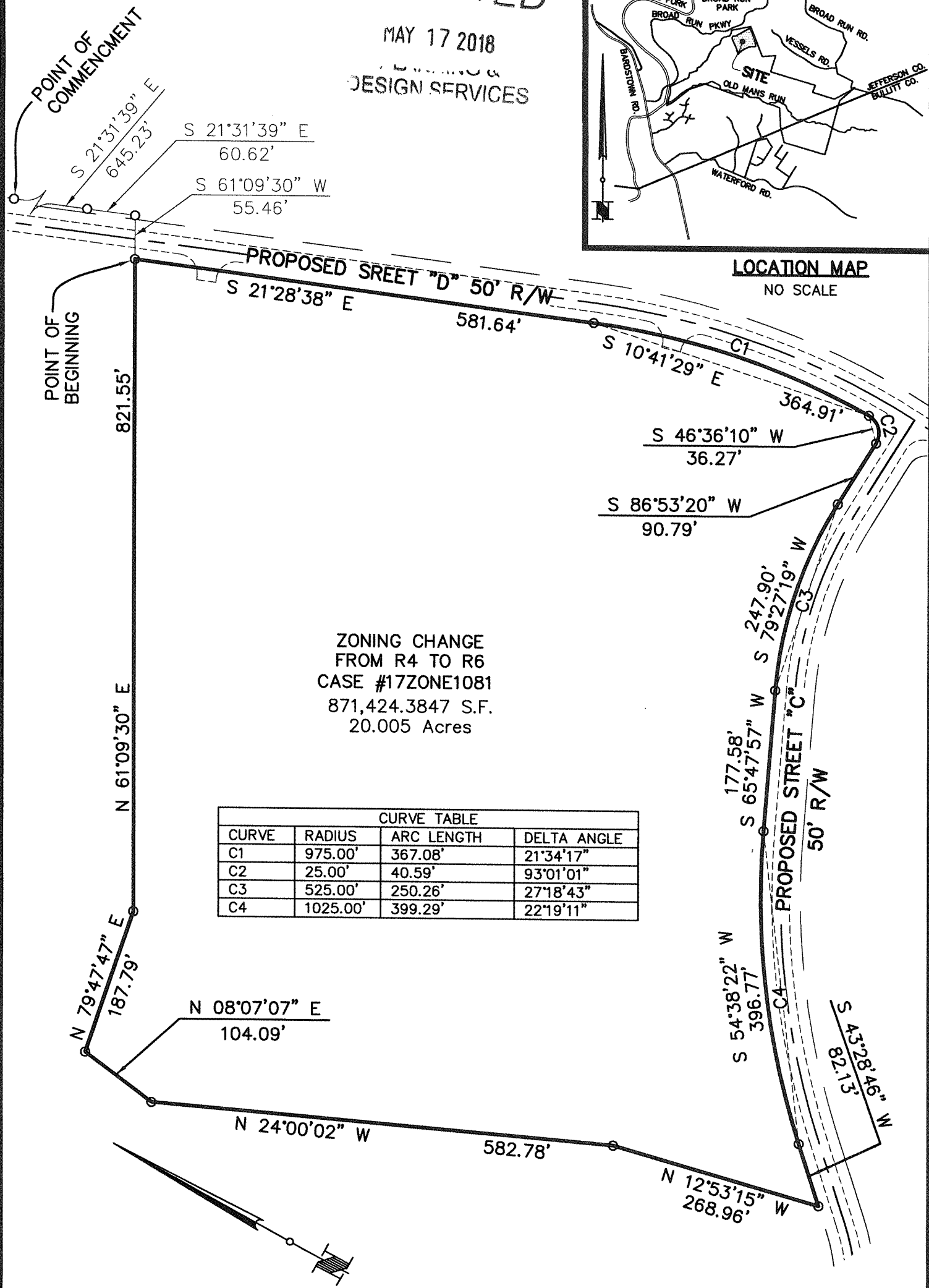
Thence N 61°09'30" E for 821.55' to the **Point of Beginning**, having an area of 871424.3847 square feet or 20.005 Acres more or less, and subjected to all encumbrances, easements and exceptions.

17 ZONE 1081

RECEIVED
MAY 17 2018
DESIGN SERVICES

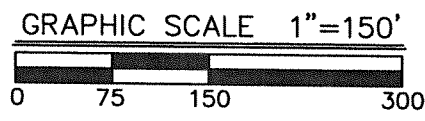


LOCATION MAP
NO SCALE



ZONING CHANGE
FROM R4 TO R6
CASE #17ZONE1081
871,424.3847 S.F.
20.005 Acres

CURVE TABLE			
CURVE	RADIUS	ARC LENGTH	DELTA ANGLE
C1	975.00'	367.08'	21°34'17"
C2	25.00'	40.59'	93°01'01"
C3	525.00'	250.26'	27°18'43"
C4	1025.00'	399.29'	22°19'11"



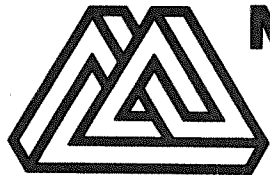
ZONING EXHIBIT

PROPERTY OF:
21ST CENTURY PARKS ENDOWMENT, INC.
471 W. MAIN STRETT, SUITE 202
LOUISVILLE, KENTUCKY 40202
TAX BLOCK 0062, LOT 0102
DEED BOOK 9695, PAGE 850

PROPERTY ADDRESS:
11333 BARDSTOWN ROAD
LOUISVILLE, KENTUCKY 40291

DATE: 5/16/18

SCALE: 1"=150'



MINDEL SCOTT
ENGINEERING ► SURVEYING ►
PLANNING ► LANDSCAPE ARCHITECTURE
5151 Jefferson Blvd. Louisville, KY 40219
502-485-1508 ► MindelScott.com