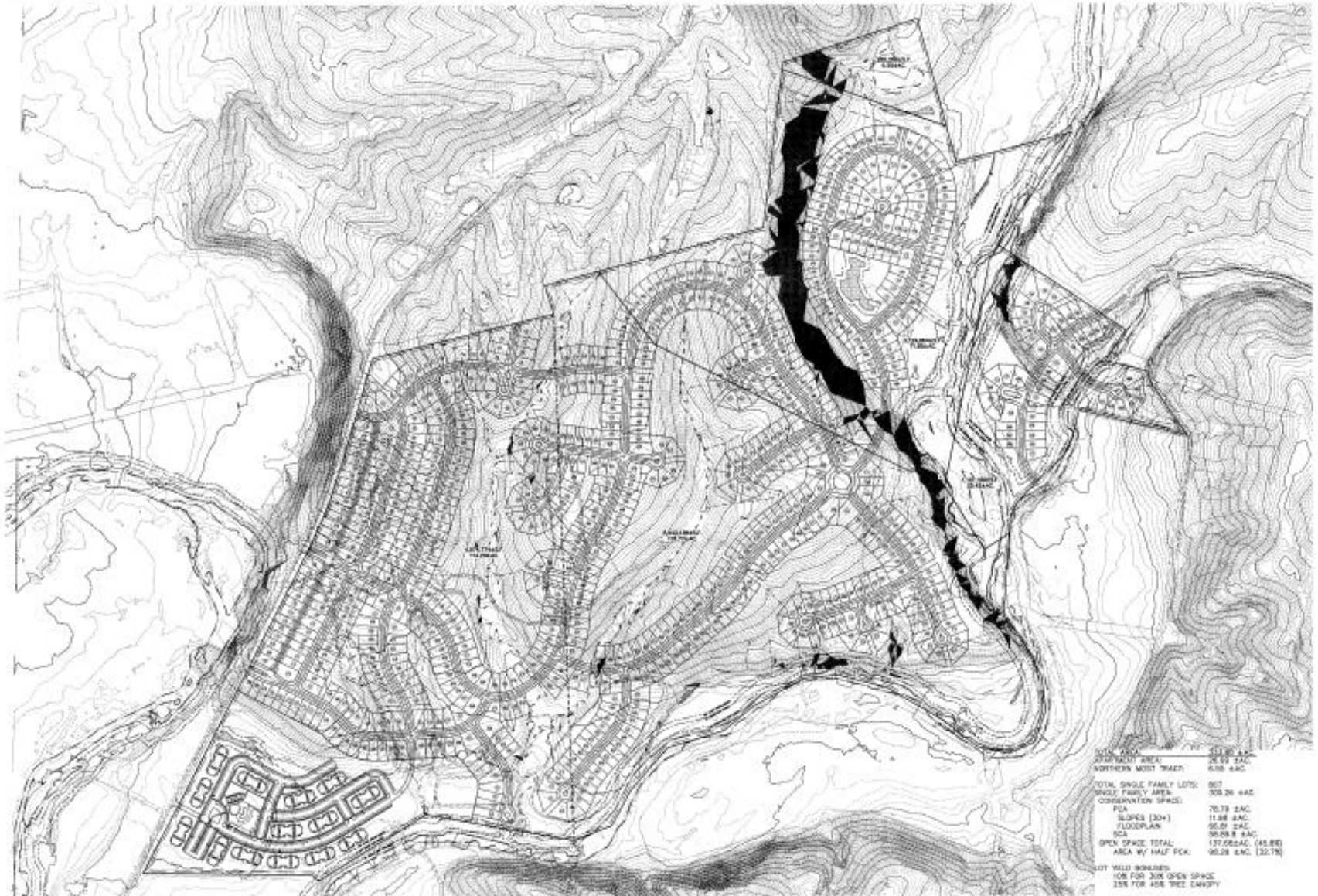
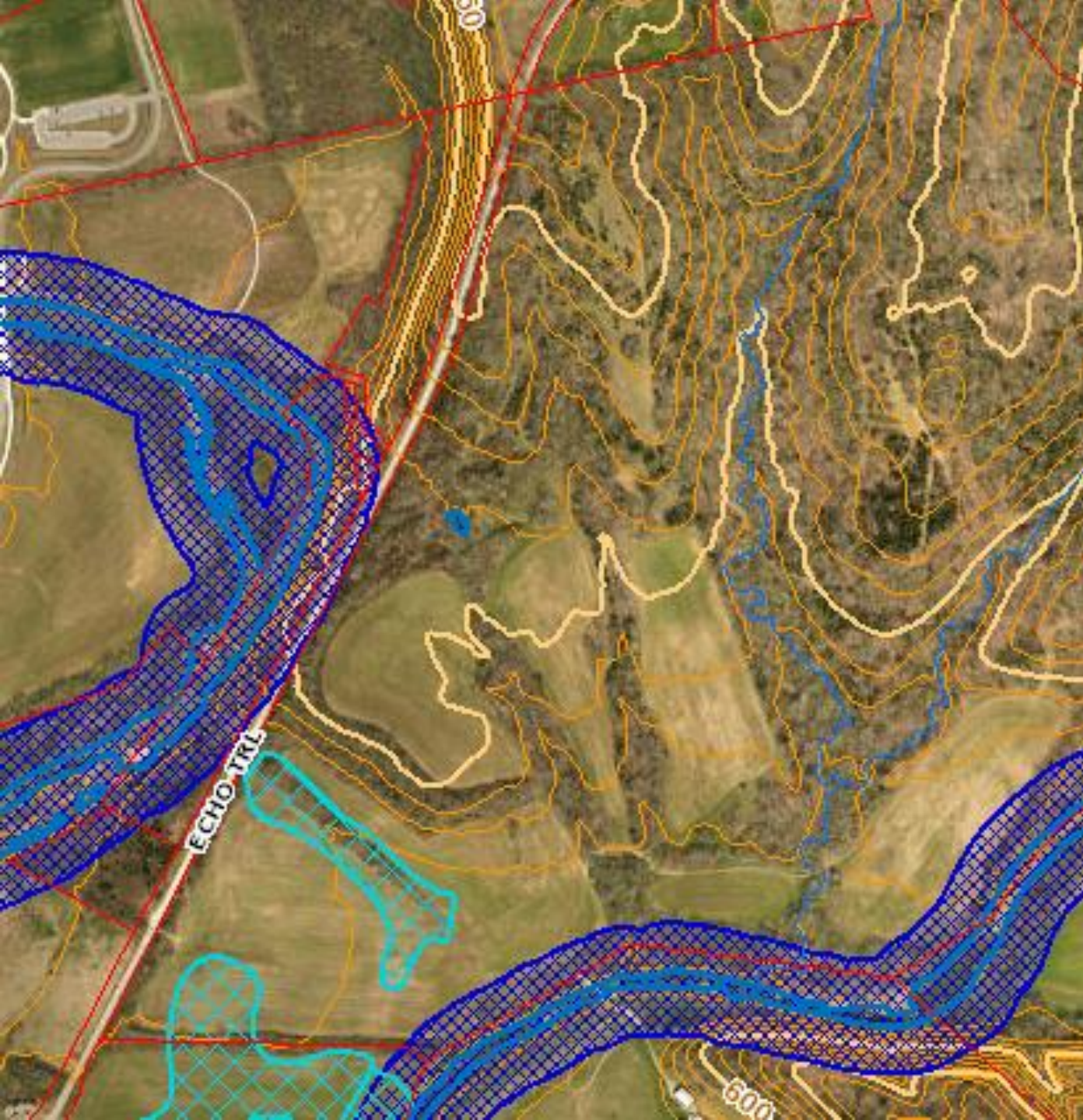


18SUBDIV1023

Floyds Fork DRO &
Environmental Impacts
Friends of Floyds Fork & Floyds Fork
Conservancy Presentation & Comments

Echo Trail "Master Plan"






DRO Parcels Today

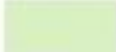
Developing the Last of our High Value Habitats, Again....



 Floyd's Fork

Habitat Cores

Core Score

 1-2 Low Quality Habitat

 2-3

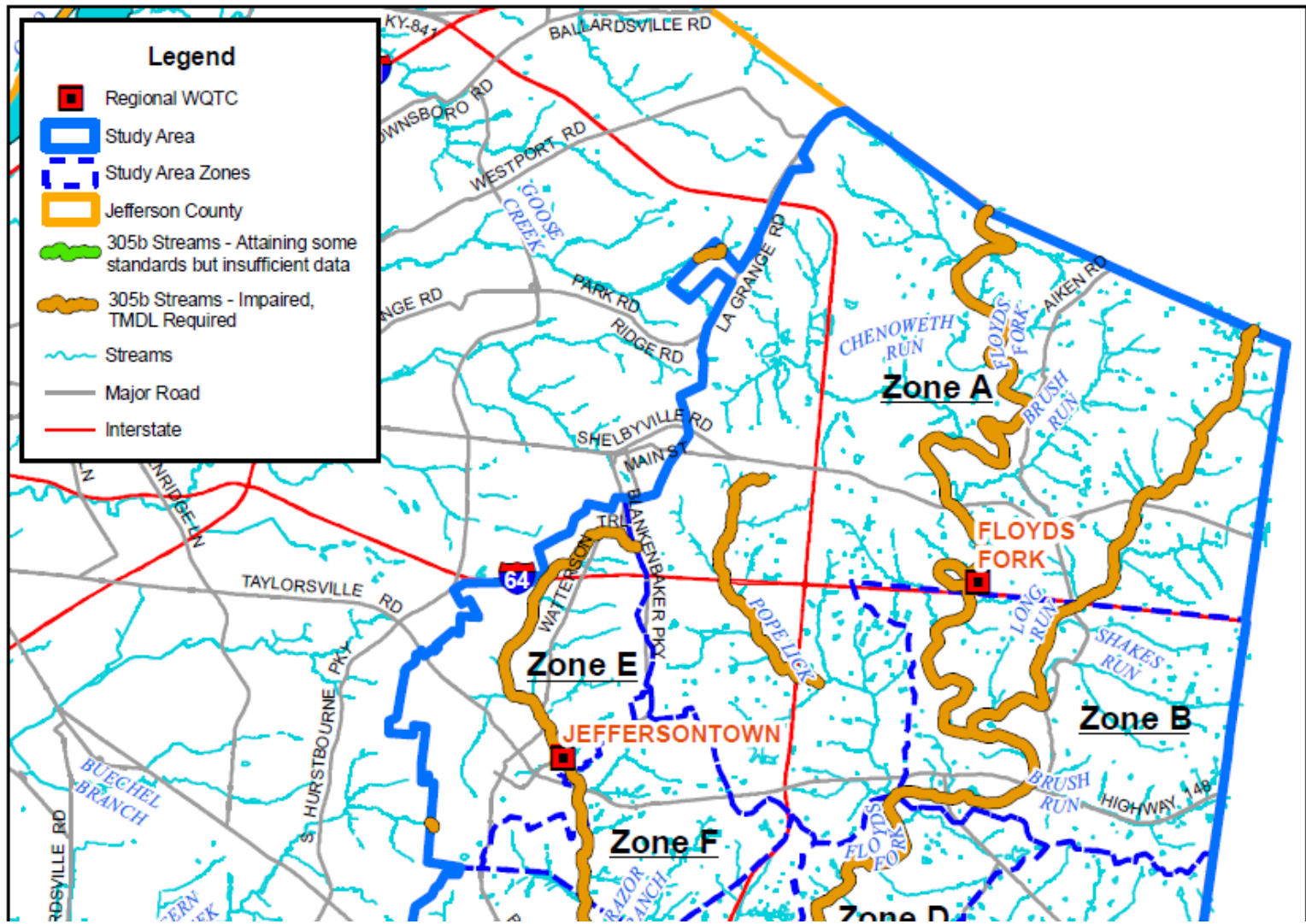
 3-4

 4-5 Highest Quality Habitat

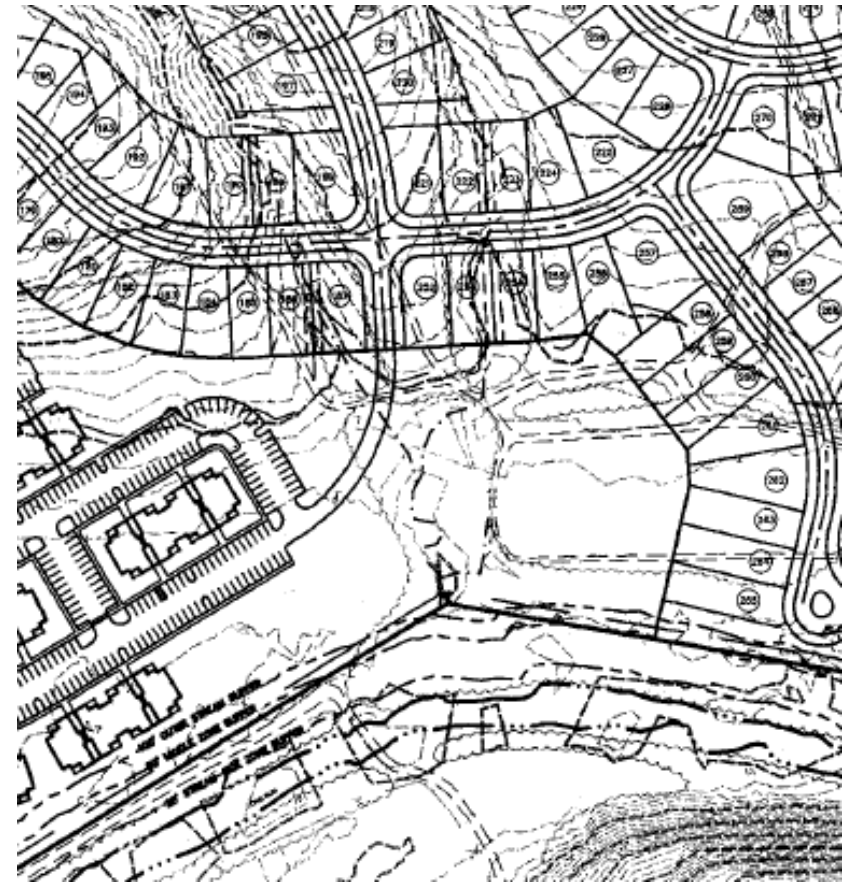
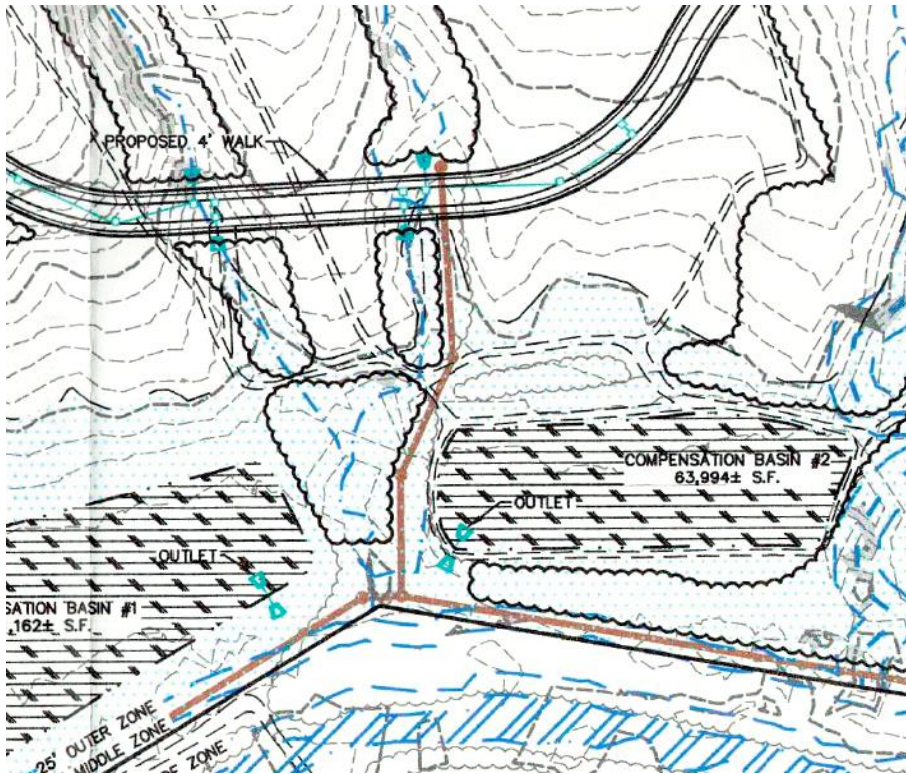
 Streams

Streams are Already Impaired: Floyds Fork and Long Run Creek

Revision Date: 5/6/10



Building Infrastructure for Development in and next to the DRO

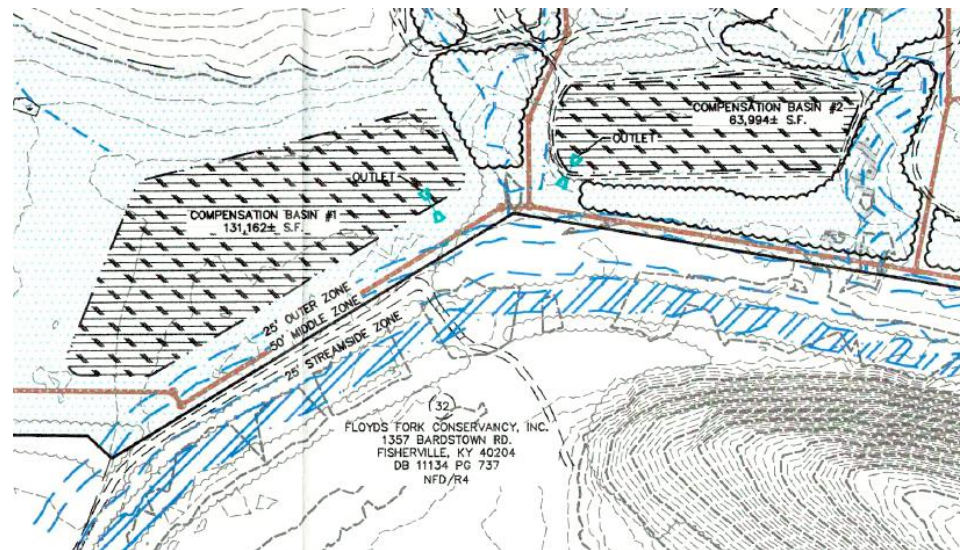


DRO Comp Basins 1&2 discharge directly to Long Run Creek upstream of Farm Ford



Compensation Basins in DRO

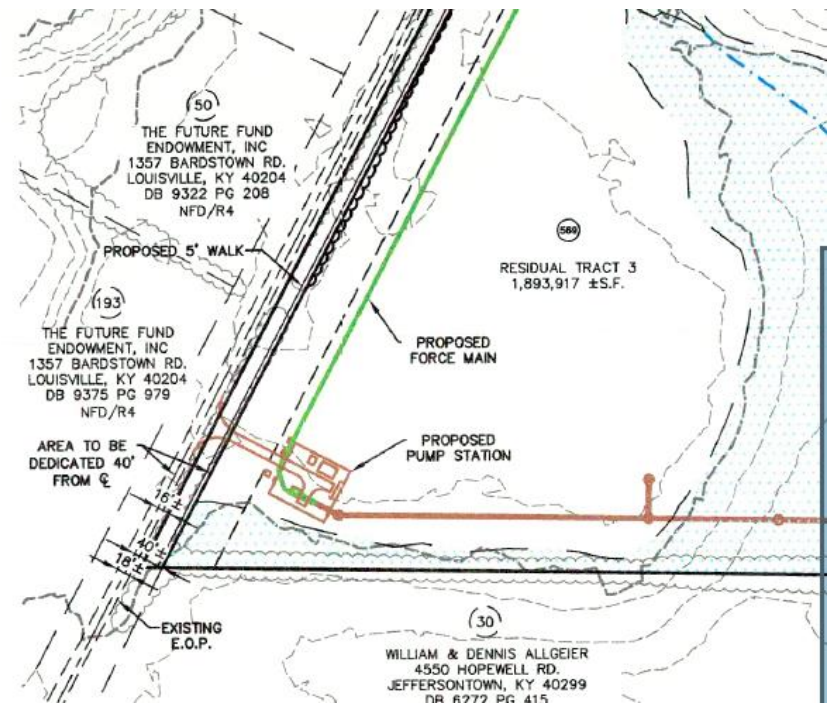
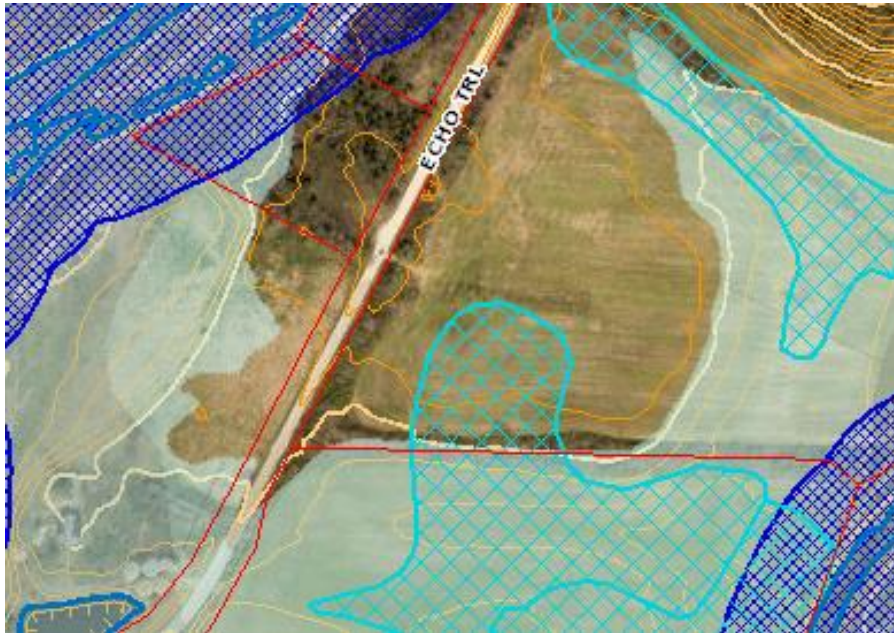
- #1 – 131,362 ft²
- #2 - 63, 994 ft²
- Combined:
 - 195,356 ft²
 - 4.48 Acres
- If these Basins were 3' deep
 - $4.48 * 3 = 13.44$ acre-feet
 - $* 325850 = 4.38$ Million Gallons
 - 21,678 cubic yards of excavation



Existing Drainage Issues: Flooding, Karst draining directly to Long Run Creek



Pump Station at the edge of Parklands? Sewer line & Pump Station in Mapped Wetlands in the DRO?



DRO Infrastructure on Submitted Plan

- 1 mile of Sewers Without the Force Main
- Pump Station
- 4.48 Acres of Detention basins
- 3100 feet of Roads
- Sewer Stubs for Future DRO Development
- >>2 acres of clearing for sewers

DRO Applicability

Regulated Activities:

- **Activities that may be detrimental to the natural, scenic and environmental characteristics** as described herein are regulated by the provisions of this ordinance and subject to the review process set out in paragraph 3 below. Such activities include:
 - **a. Clearing of forested area greater than 5,000 square feet for development purposes.**
 - **b. Grading, excavation, construction of retaining walls, or alteration of the ground surface other than that attendant to agricultural uses.**
 - c. Alteration of a protected body of water including channeling, diverting, dredging or removal of stream materials.
 - d. Bridging or damming of a protected body of water.
 - **e. Modification of a wetland, including filling, excavation, clearing of trees, paving, construction or diversion of the water supply.**
 - f. Construction of any structure other than those exempted in Paragraph B.1.
 - **g. Utility construction including water, sewer or waste disposal, natural gas and electric.**
 - **h. Construction of roadways or parking lots serving more than a single dwelling unit.**
 - i. Subdivision of land.
 - j. Expansion of an existing residential structure by more than 50% or of a non-residential structure by more than 10% beyond the extent of the structure's square footage as existed on the effective date of this regulation.
 - k. Installation of a freestanding sign exceeding 30 square feet in area.

DRO Requirements

- Structures, impervious surfaces, septic systems and associated fill slopes should not be located within the floodplain.
- Filling and excavation should not be permitted in the floodplain. Floodplains are recommended for agricultural and recreational use.
- Areas identified as wetlands in studies approved by government agencies should be preserved in their natural state. Drainage, flooding patterns and any hydrologic system(s) needed to sustain the wetlands should not be altered. Existing vegetation and wildlife habitat should be preserved.
- Minimize cuts and fills. Necessary cuts, fills and other earth modifications should be replanted with appropriate vegetation.

What we DO Know

- Lots – 556 as shown, Master Plan calls for 807 single family, plus +/- 350 Apartments
- Tree loss
 - - 26.2 acres outside the DRO
 - Not Provided inside the DRO
- Master Plan
- Development at these densities and with this amount of impervious cover will decimate these tributaries to Long Run Creek and Floyds Fork – already impaired waters.

What We Don't Know

- Environmental Reports
 - Redwing Stream Survey??
 - Ecological Surveys
 - Stream Flow Impacts
 - Water Quality Impacts
 - Impervious Cover
 - Amount of cut and fill in flood plain
 - USACE permits for filling and dredging of wetlands and streams, bridges, stream crossings and impacts to pending USACE Section 206 Aquatic Restoration Program Impacts

Future Fund USACOE Section 206 Restoration Planning

FLOYDS FORK, KENTUCKY CAP – SECTION 206



Future Fund Board Meeting
5 February 2019

"The views, opinions and findings contained in this report are those of the authors(s) and should not be construed as an official Department of the Army position, policy or decision, unless so designated by other official documentation."



**US Army Corps
of Engineers.**



Multi Million Dollar – Multi Site Project

- \$160,000 and a year of Planning largely completed
- Multiple locations selected for project
- Letter of Intent Imminent
- One of the Projects is the Floyds Fork Conservancy's Long Runs End Farm
- Immediately across Long Run Creek from the Proposed Project is Long Runs End Farm

USACE Resource Assessment

SIGNIFICANCE OF THE RESOURCE

The Floyds Fork watershed is the largest watershed in Jefferson County.

The stream corridor of Floyds Fork provides essential habitat for a diverse assemblage of flora and fauna, including endangered Indiana bats, threatened Northern long-eared bats, and up to 50 state-listed species.

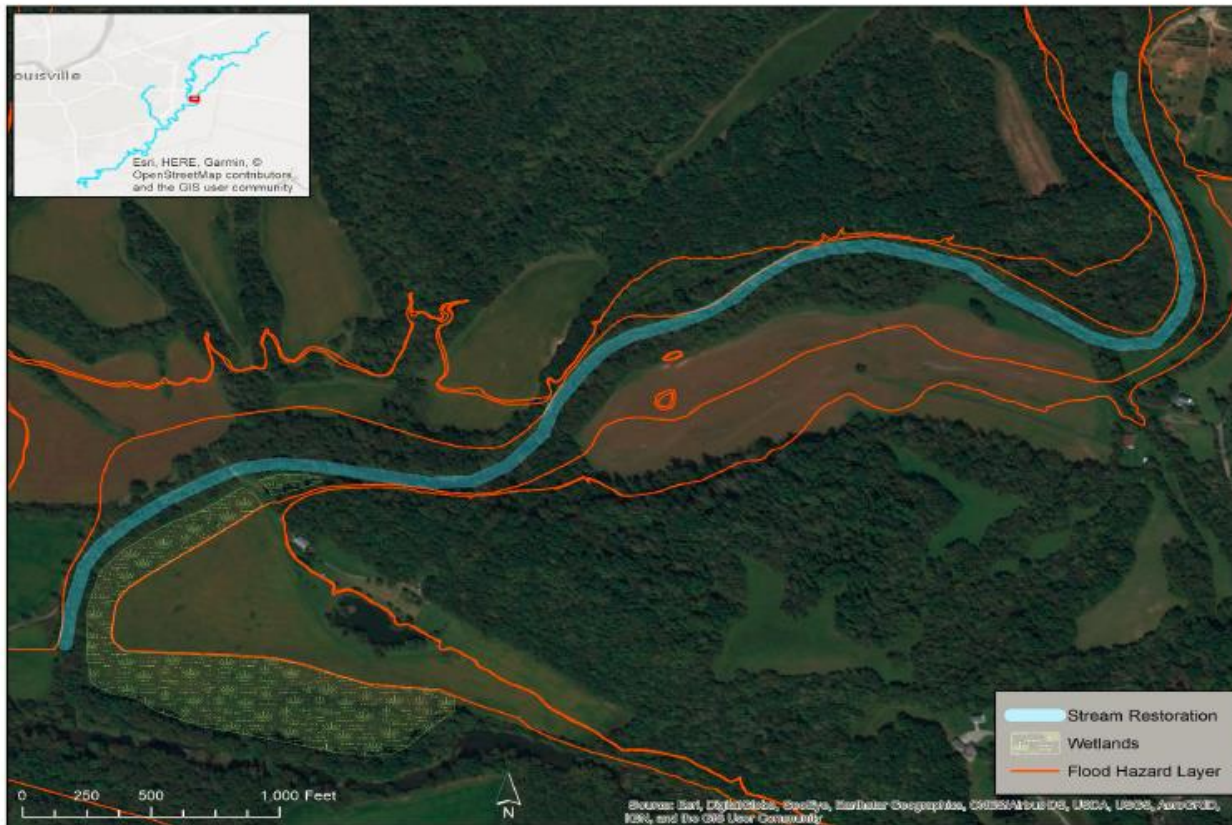
The Floyds Fork watershed contains the largest, most diverse mussel population of any stream within the county. However, these populations have been on the decline from local land use changes that have degraded water quality.

The Floyds Fork corridor acts as an essential refuge for native animals in an increasingly urbanized landscape, and is an area that will greatly benefit from increased conservation and restoration of its unique natural environment.



Stream And Wetlands Restoration Work Needed and Proposed

PROJECT AREA 1: LONG RUN



Today's Conditions

EXISTING CONDITIONS

8



File Name



US Army Corps
of Engineers.



Proposed Restoration

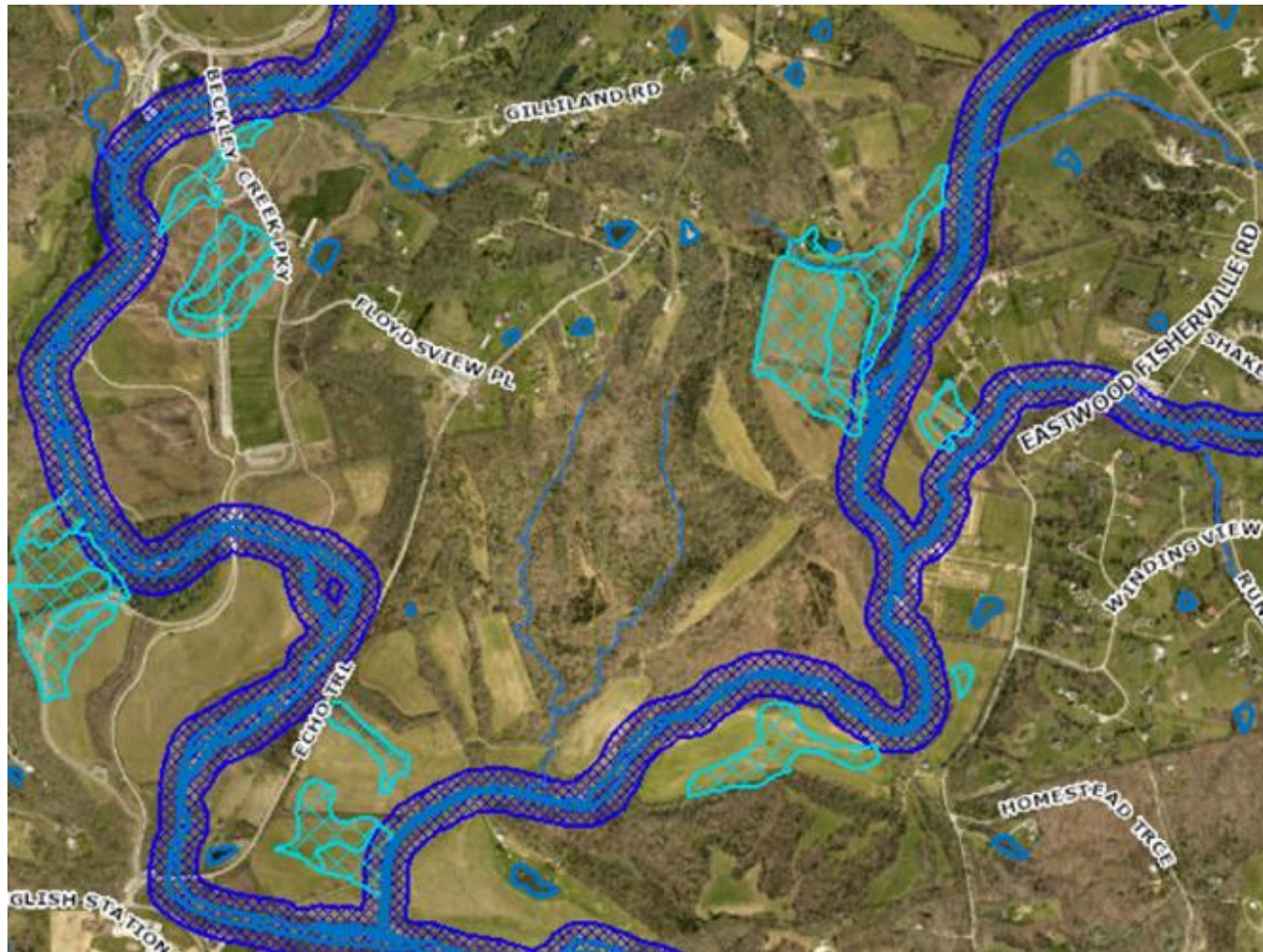
PROPOSED ALTERNATIVES



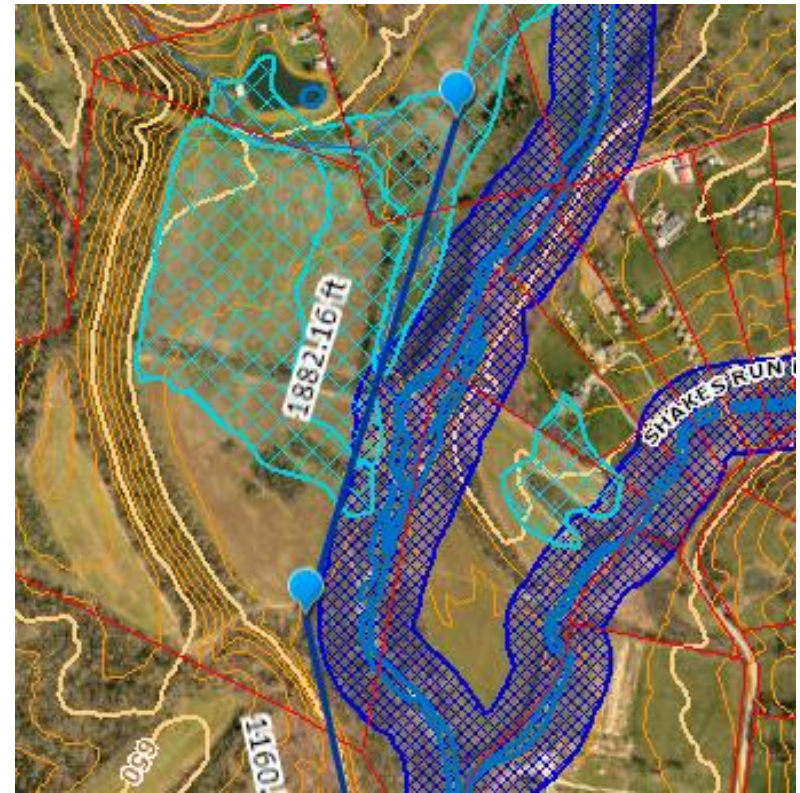
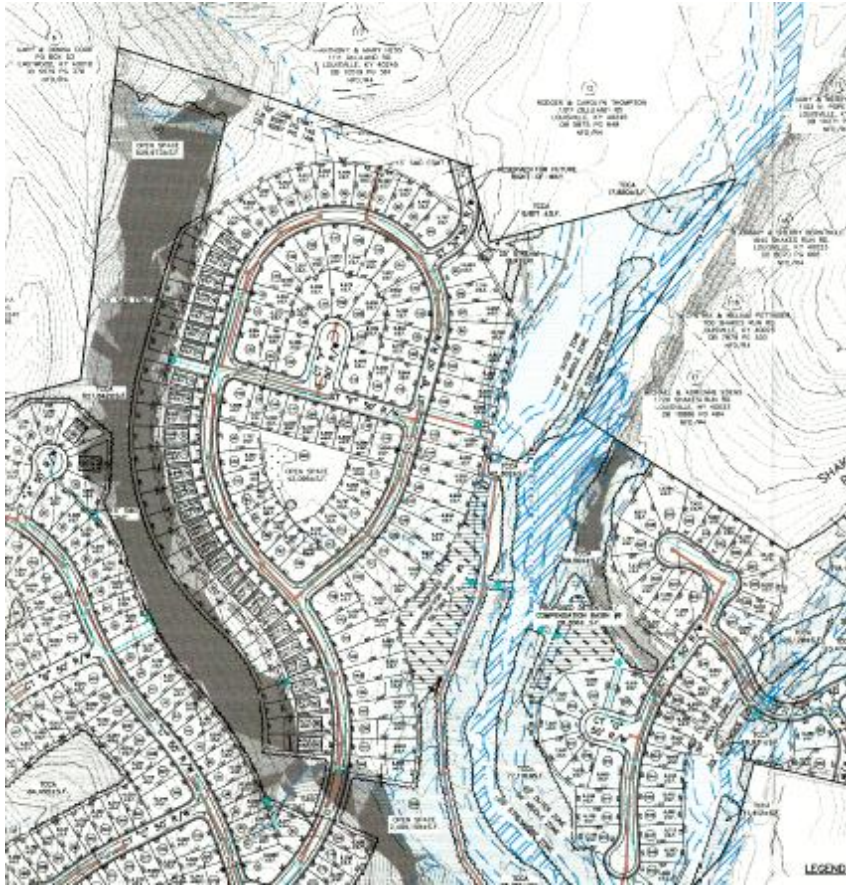
File Name



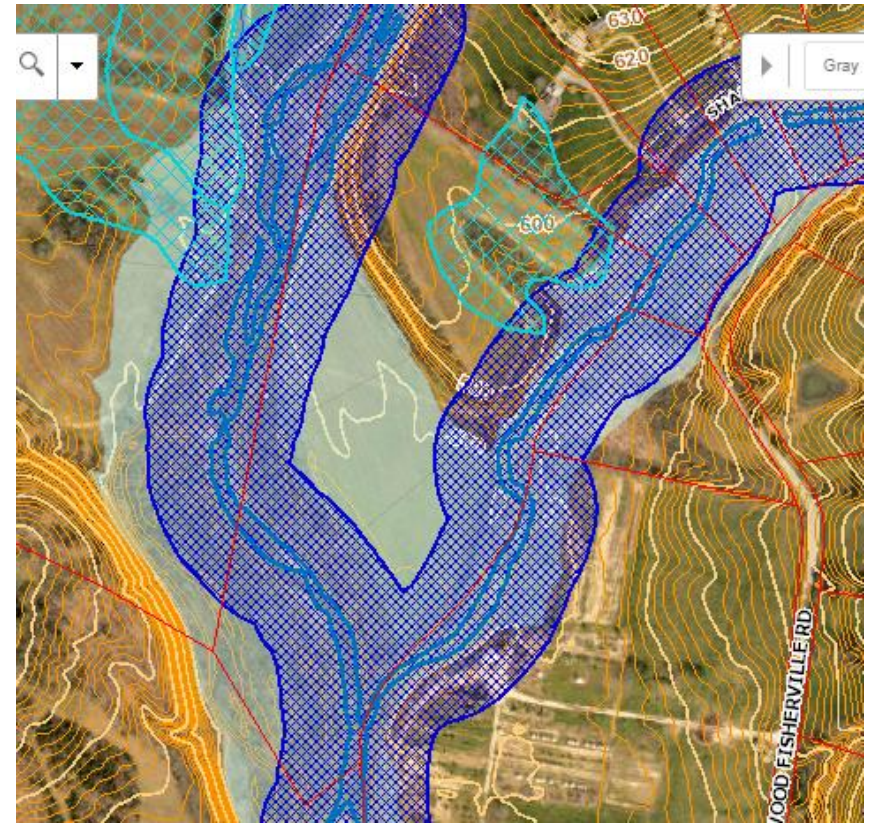
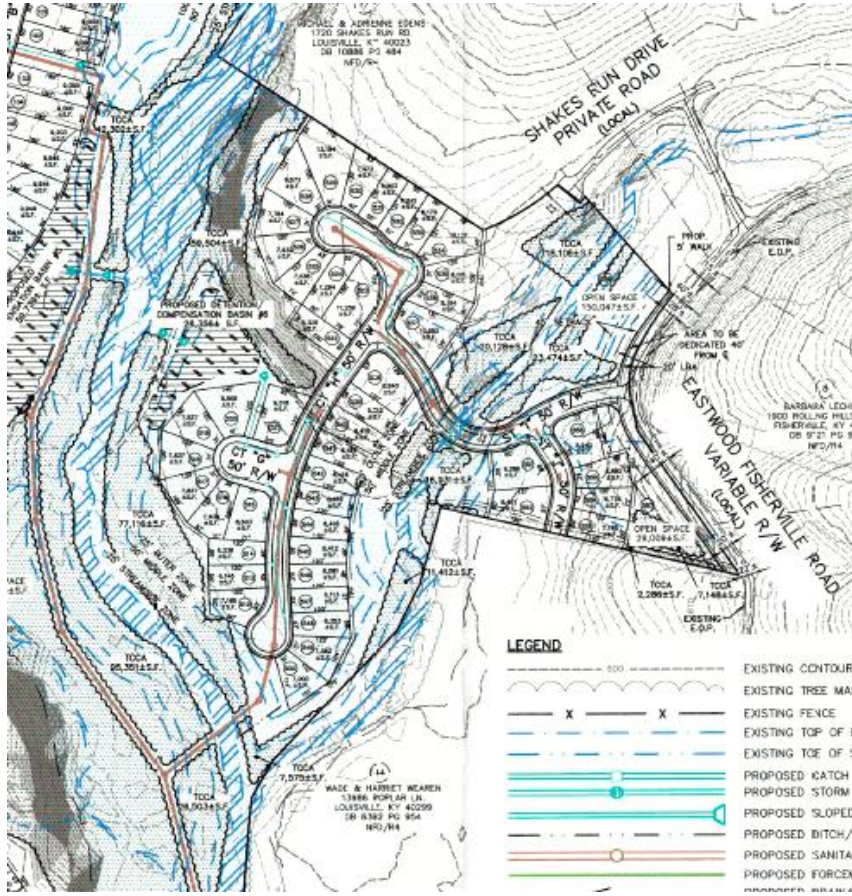
Let's Bury the one of the largest Remaining Wetlands on Long Run



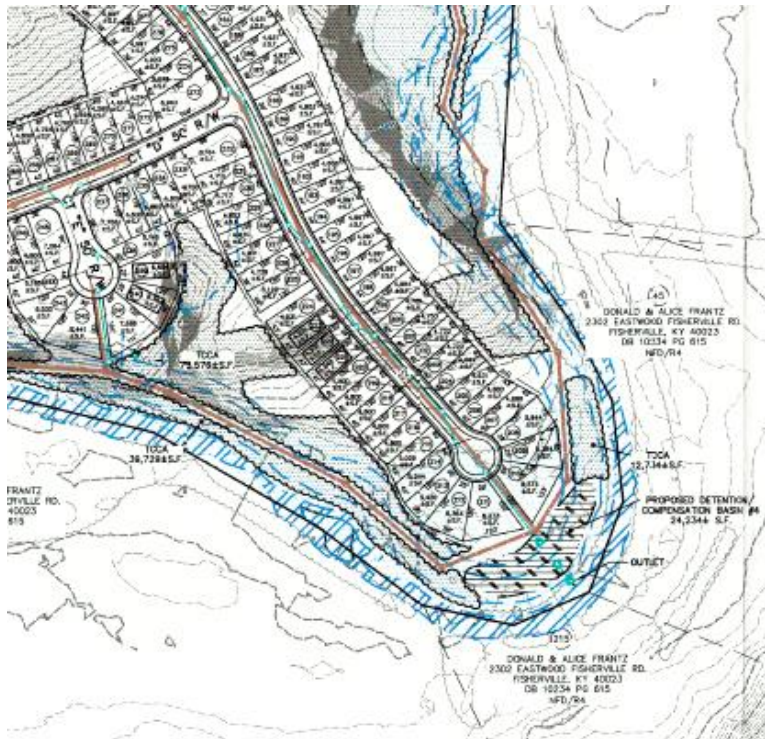
Lets Bury the one of the largest Remaining Wetlands on Long Run



Let's Build in The Flood Plain



Lets Keep Building in the Floodplain



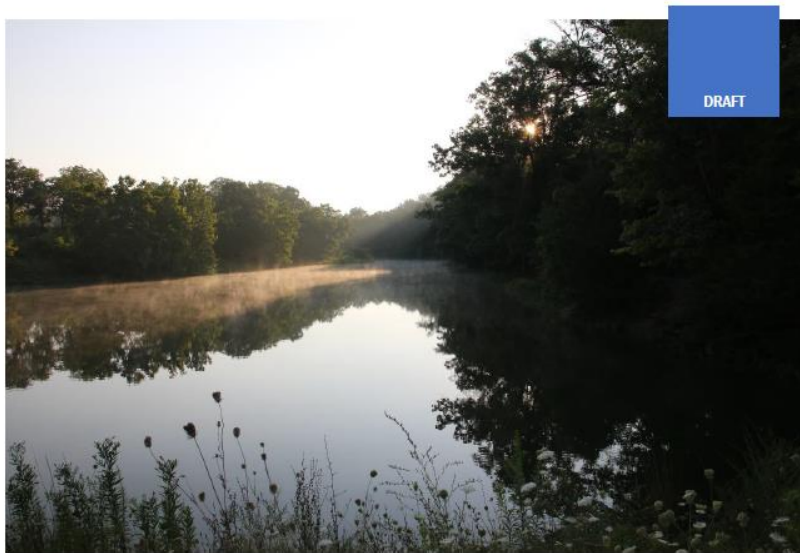
- GENERA**
1. DOME: SUBE NICES DEVEL
 2. TREE A TRE COMM BEGN PROTE CONS



While we're at it lets build under and on top the Bluffs



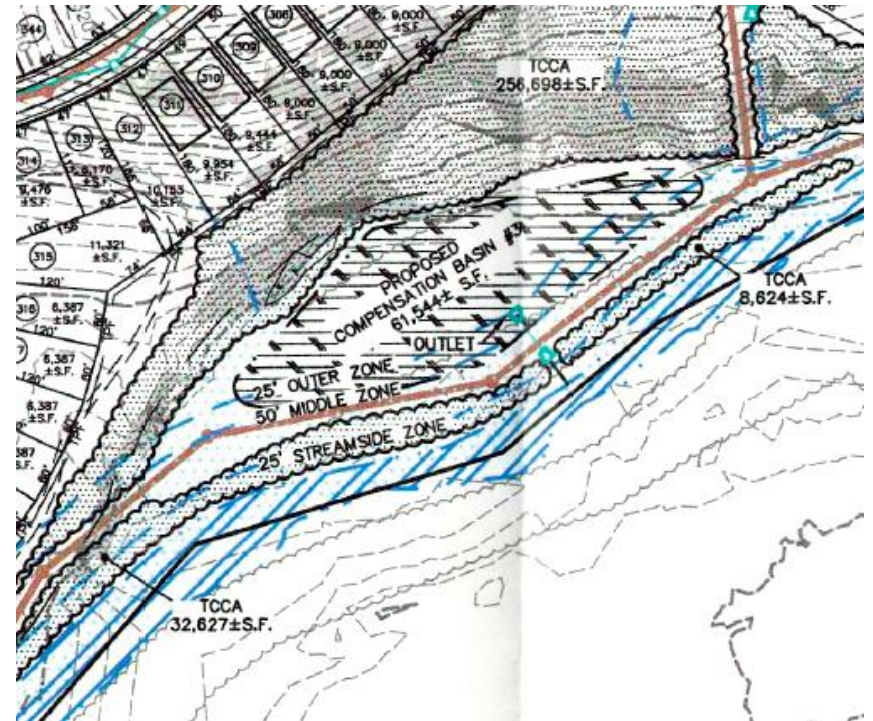
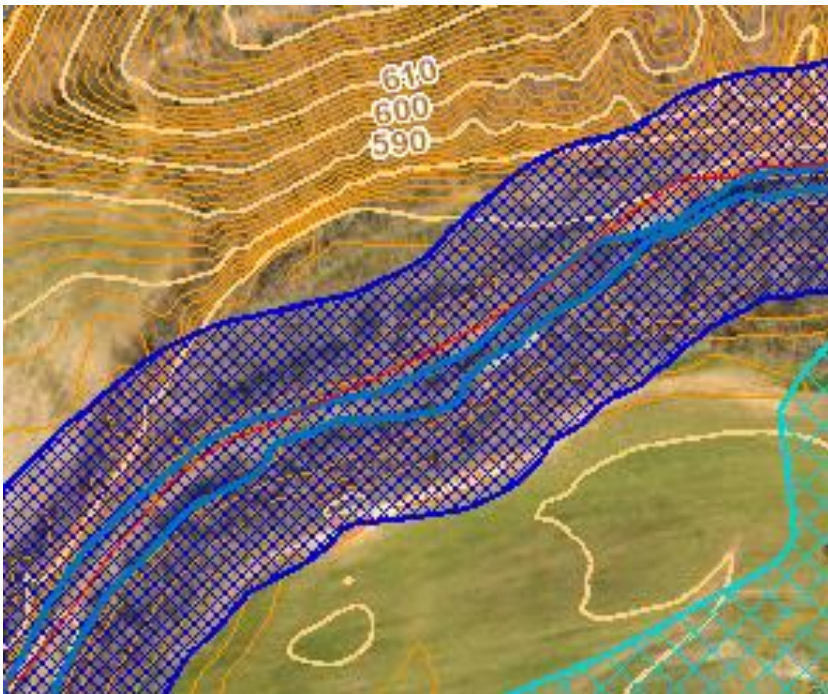
Jumping the Gun on the South Floyds Fork Vision Area Plan and Tree Preservation Recommendations



South Floyds Fork Vision



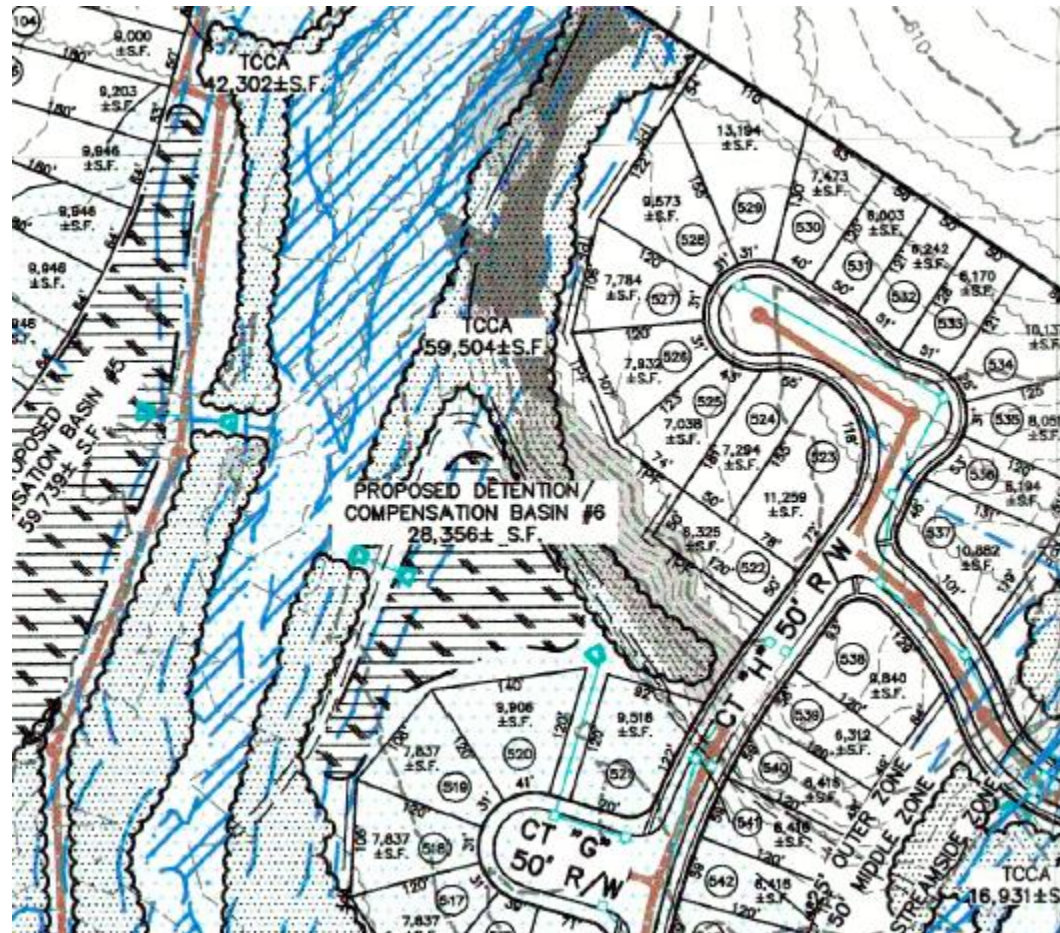
Comp Basin on top of Long Run

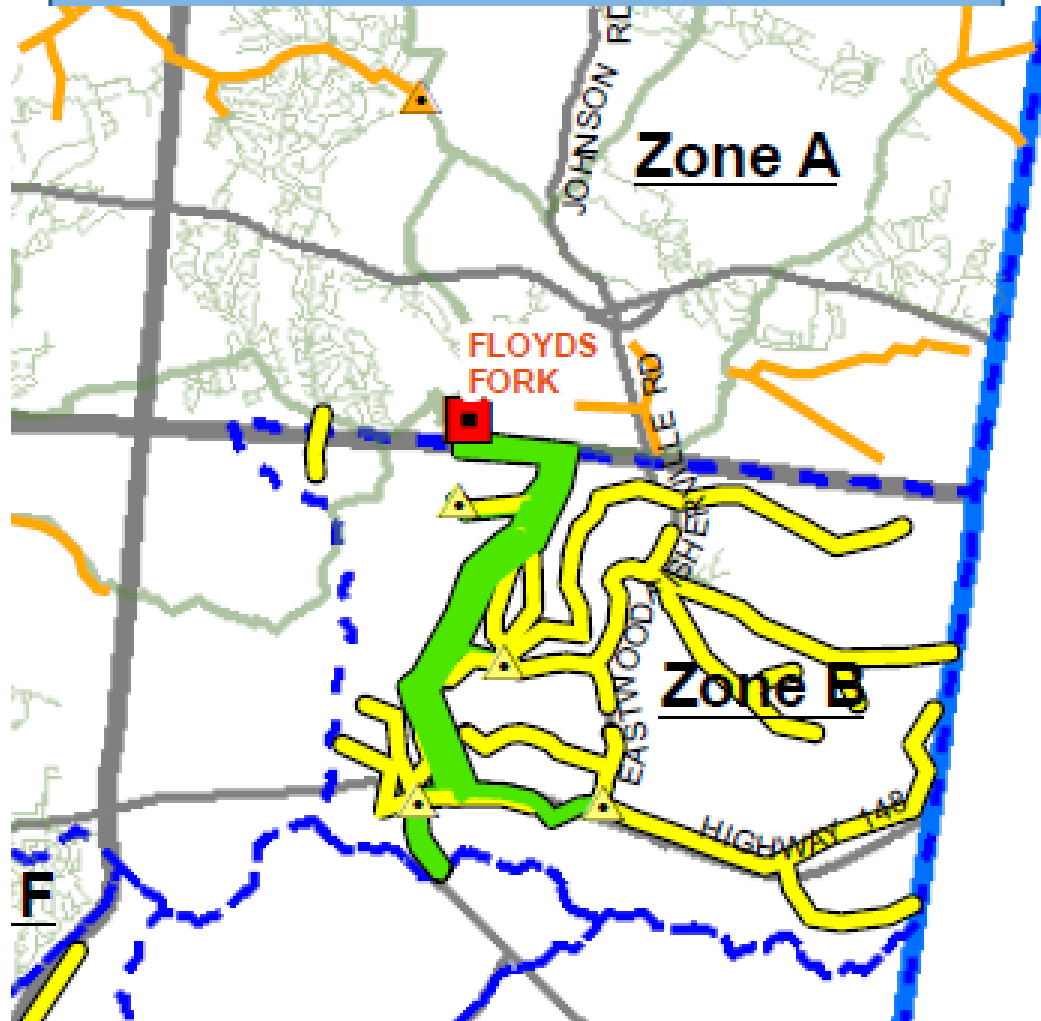


We Respectfully Request that the Commission:

- Deny the application in its present form
- Require the applicant to submit and present:
 - Existing Environmental studies in their possession
 - Results from Consultation with USACOE, FEMA, and USF&W regarding Habitat and required permitting for bridges, stream crossing, wetland and cut and fill impacts
 - Hydrologic studies to demonstrate impact to wetlands and stream discharges
 - Revised Plans to reflect concerns and information requested herein and in comments filed with the commission

Comp Basins on both Sides of the Creek







FFAPU

Floyds Fork Action Plan Update
November 2010

