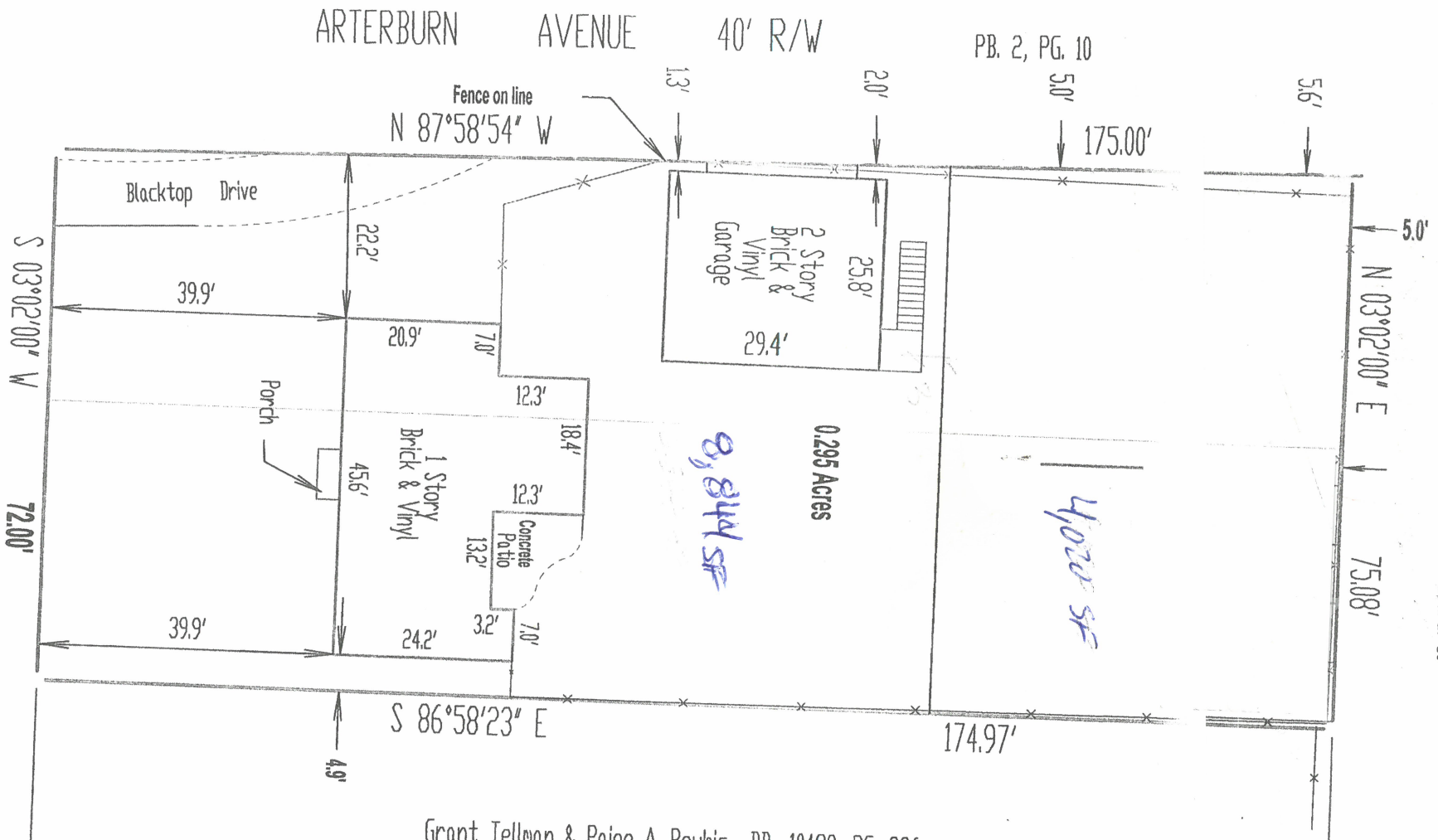


ALLEY 20' RW

PB. 2, PG. 10



Grant Tellman & Paige A. Roubic DB. 10498, PG. 326

CRESTMOOR AVENUE 60' R/W
PB. 2, PG. 10

RECEIVED
MAR 20 2023

PLANNING &
DESIGN SERVICES

- LEGEND**
- = Existing 5/8" rebar.
 - = Existing 5/8" rebar with a cap #2542
 - = Set a 1/2" rebar with a cap #3444 Willett.
 - = Fence lines

23-CVP-0816