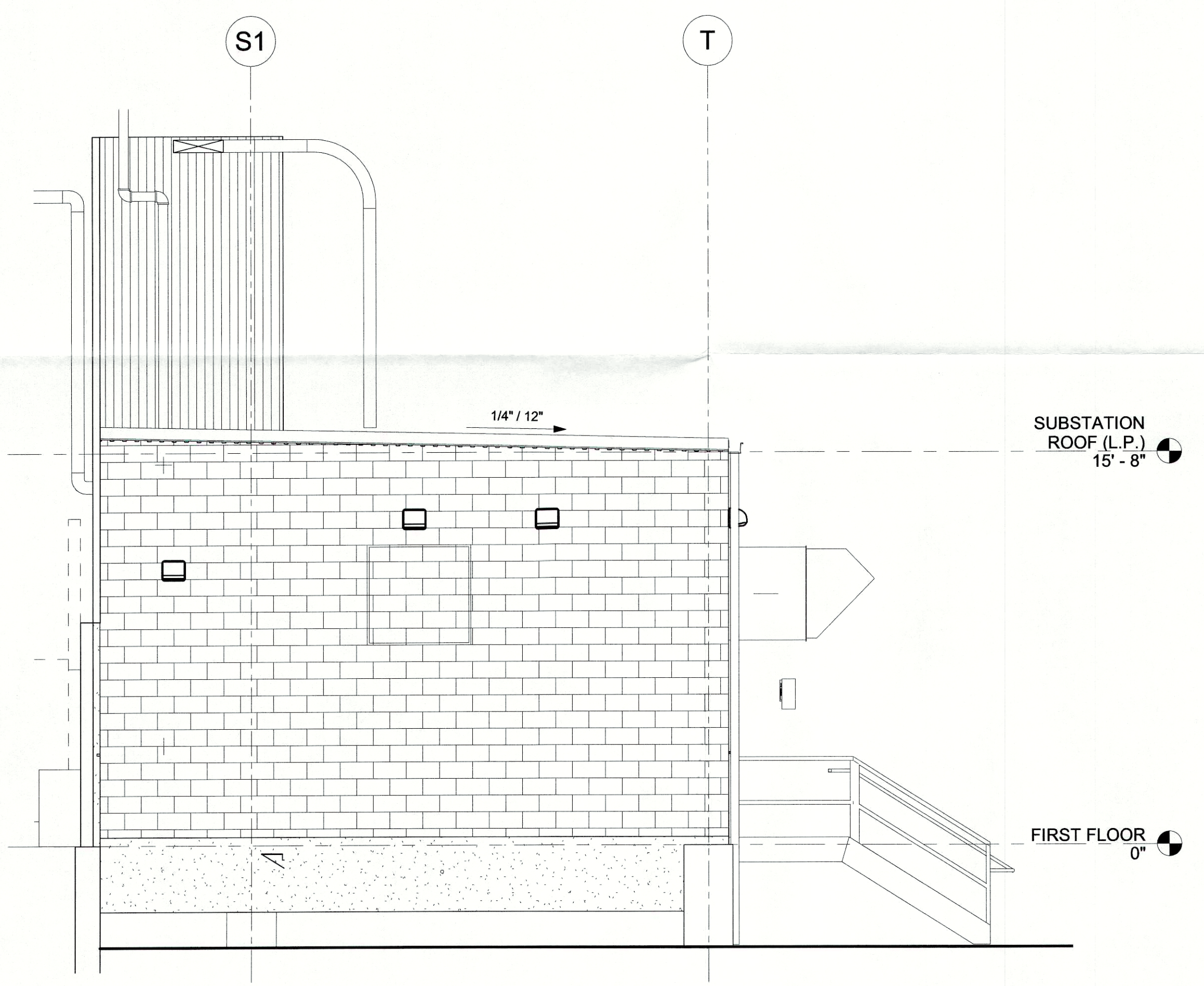
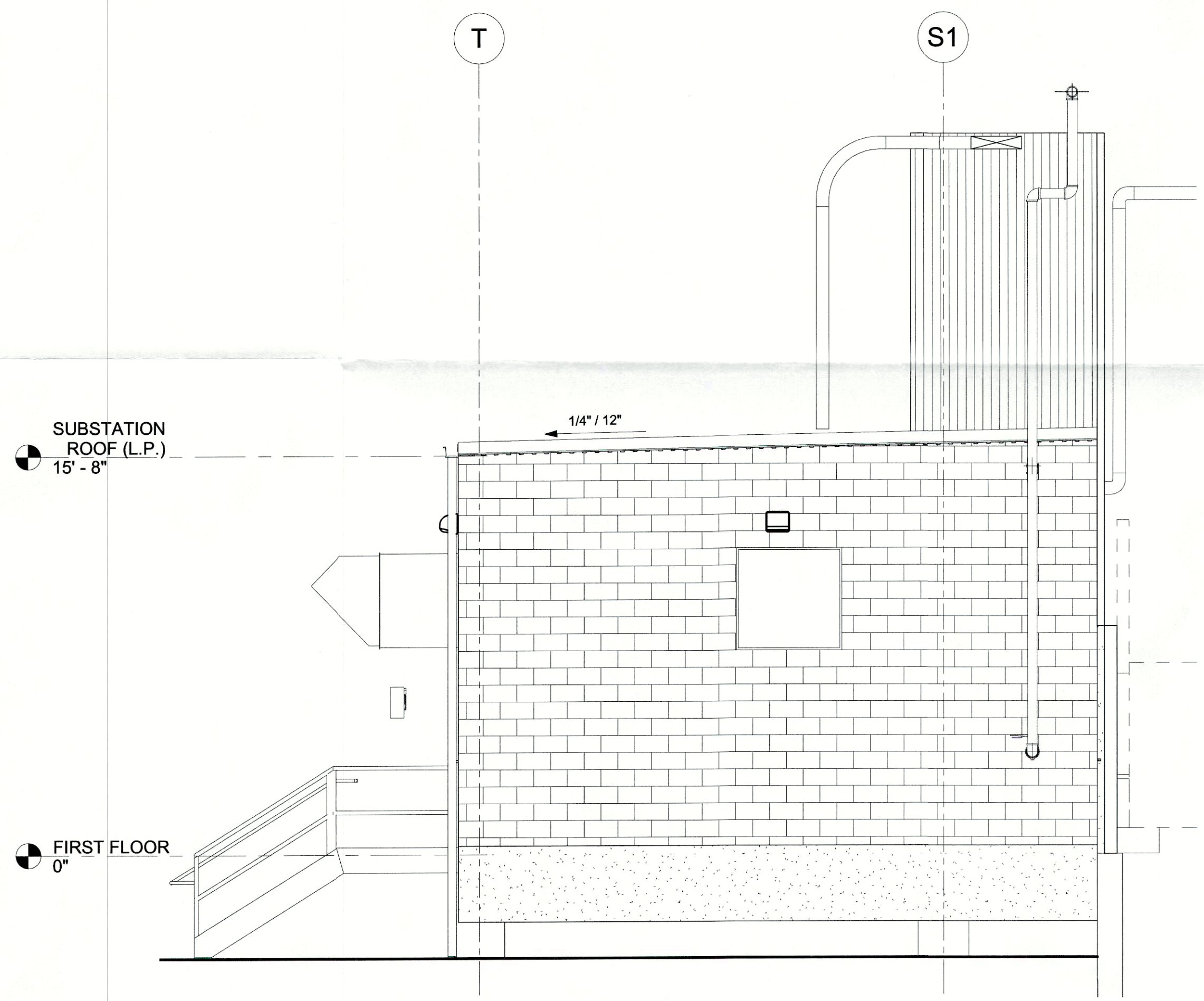


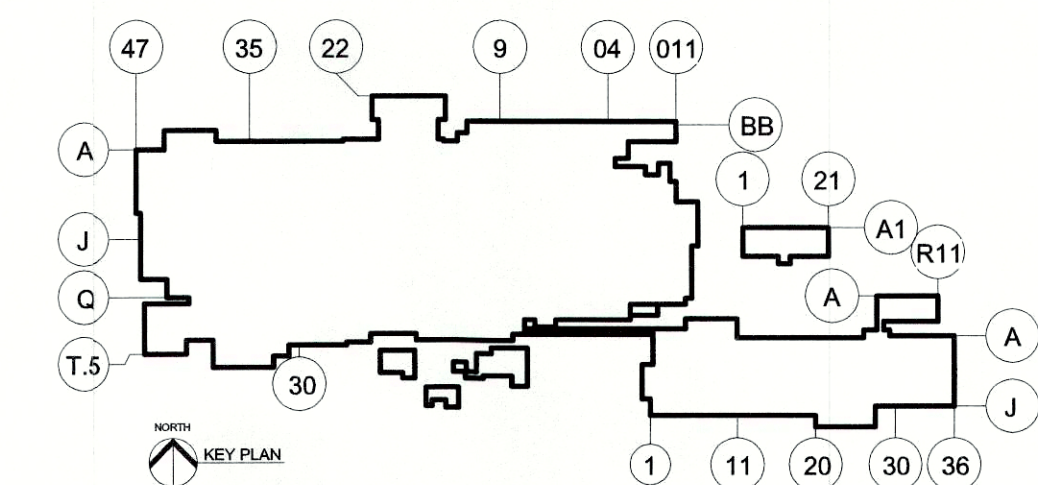
C SOUTH ELEVATION - SUBSTATION
 G-200 SCALE: 1/4" = 1'-0"



B WEST ELEVATION - SUBSTATION
 G-200 SCALE: 1/4" = 1'-0"



D EAST ELEVATION - SUBSTATION
 G-200 SCALE: 1/4" = 1'-0"



FORD LAND

330 TOWN CENTER DRIVE, SUITE 1100
 DEARBORN, MICHIGAN 48126-2738

LOUISVILLE ASSEMBLY PLANT
 2000 FERN VALLEY ROAD
 LOUISVILLE, KY 40241
 FORD LAP
 7500 SF ADDITION &
 BCE INFRASTRUCTURE
 BRIDGING DOCUMENTS

LOUISVILLE JEFFERSON KY
 BUILDING SITE CODE: 1601
 FORD PROJECT NUMBER:

AVE OF RECORD LOGO
 [smart design] SM
Luckett & Farley
 © 2015
 737 South Third Street, Louisville, Kentucky 40202-2100
 502-585-4181 502-587-0488 Fax www.luckett-farley.com

AVE OF RECORD REGISTRATION SEAL

BRIDGING DOCUMENTS

NOT FOR CONSTRUCTION

THIS DRAWING HAS BEEN PREPARED BY OR ON BEHALF OF FORD MOTOR COMPANY. FORD MOTOR COMPANY RETAINS ALL COMMON LAW, STATUTORY AND OTHER RESERVED RIGHTS, INCLUDING COPYRIGHTS. THIS DRAWING SHALL NOT BE USED FOR ANY PURPOSE OTHER THAN PERFORMING SERVICES DIRECTLY OR INDIRECTLY TO FORD MOTOR COMPANY, WITHOUT THE EXPRESSED WRITTEN PERMISSION OF FORD MOTOR COMPANY. UNAUTHORIZED USE, COPYING OR MODIFICATION, INCLUDING THE REMOVAL OF THIS NOTE, MAY CONSTITUTE A VIOLATION OF CIVIL OR CRIMINAL LAWS ENFORCEABLE BY FORD OR GOVERNMENTAL AGENCIES.

COPYRIGHT © FORD MOTOR COMPANY (2008)

REVISIONS

#	DESCRIPTION	DATE

RECEIVED
 FEB 12 2018
 PLANNING &
 DESIGN SERVICES

AVE TEAM INFORMATION

IN CHARGE: **JLB**
 DRAWN BY: **CLW**
 DESIGNED BY: **CLW**
 CHECKED BY: **JLB**
 APPROVED BY: **JLB**

AVE PROJECT NUMBER: **2017.228**

SHEET TITLE
**UNIT 5 - PLAN, SECTION,
 ELEVATIONS - SUBSTATION**

SHEET NUMBER
5-A101