

RESOLUTION NO. 066, SERIES 2019

A RESOLUTION DEDICATING THE CRITTENDEN CONNECTOR SHOWN ON EXHIBIT A ATTACHED HERETO AS A PUBLIC WAY AND STREET IN ORDER TO RELOCATE CRITTENDEN DRIVE AND ENHANCE ITS CONNECTION WITH LOUISVILLE INTERNATIONAL AIRPORT.

SPONSORED BY: COUNCILWOMAN NICOLE GEORGE

WHEREAS, according to KRS 82.400(1), any person may offer for dedication by recorded plat a proposed public way;

WHEREAS, the expansion of the Louisville International Airport has necessitated the relocation of Crittenden Drive to the location shown as the Crittenden Connector on Exhibit A attached hereto and made a part hereof;

WHEREAS, the real estate upon which the Crittenden Connector is located is within the jurisdictional limits of Louisville/Jefferson County Metro and is owned by Louisville/Jefferson County Metro Government; and


WHEREAS, the Crittenden Connector is an efficient way to access and exit the Louisville International Airport.

NOW, THEREFORE, BE IT RESOLVED BY THE LEGISLATIVE COUNCIL OF THE LOUISVILLE/JEFFERSON COUNTY METRO GOVERNMENT ("METRO COUNCIL") AS FOLLOWS:

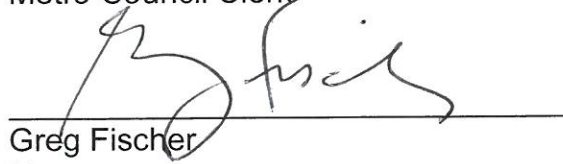
SECTION I: The Metro Council determines that the real estate upon which the Crittenden Connector is located is within the jurisdictional limits of Louisville/Jefferson County Metro Government.

SECTION II: The dedication of the Crittenden Connector as a public way or street is hereby accepted and approved.

SECTION III: This Resolution shall become effective upon its passage and approval.



H. Stephen Ott
Metro Council Clerk



Greg Fischer
Mayor

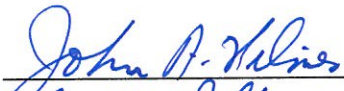


David James
President of the Council

8/2/2019
Approval Date

APPROVED AS TO FORM AND LEGALITY:

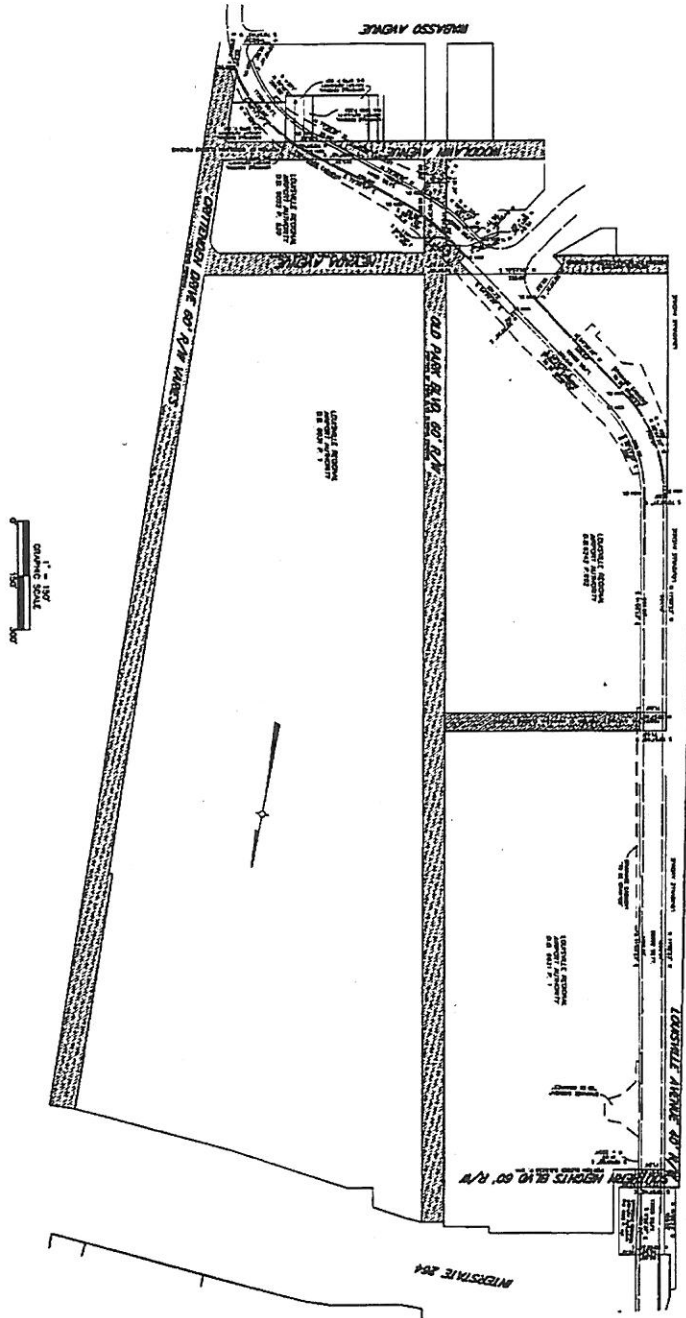
Michael J. O'Connell
Jefferson County Attorney

By: 
Assistant Jefferson County Attorney

R-074-19 Dedicate Crittenden Connector as Public Way (JW)(6-13-19).docx

**LOUISVILLE METRO COUNCIL
ADOPTED**
July 25, 2019

EXHIBIT A



PRELIMINARY

2 OF 3
 DEDICATION OF
 CRITTENDEN DRIVE
 OLD CRITTENDEN DRIVE
 TO
 INTERSTATE 264
 LOUISVILLE REGIONAL
 AIRPORT AUTHORITY



ONE RIVERSIDE PLAZA
 401 W. MAIN STREET, SUITE 800
 LOUISVILLE, KENTUCKY 40202
 PHONE: 502.251.8200
 FAX: 502.251.2215

DATE:	1/11/13
SCALE:	AS SHOWN
CONTRACT NO.:	000000151
PROJECT NO.:	000000151
DESIGNER:	HDR
CHECKED:	SP
D/C:	

REVISIONS:		DESCRIPTION
NO.	DATE	
1	2/18/13	COMMENTS ADDRESSED
2	3/03/14	COMMENTS ADDRESSED

DEDICATION OF NORTHERN PORTION OF NEW CRITTENDEN DRIVE Revised 3-03

PORTION BETWEEN OLD PARK BOULEVARD AND CRITTENDEN

Beginning at an iron pin in the east line of Old Park Boulevard North 11 degrees 05 minutes 15 seconds West 567.15 feet as measured along said east line from its intersection with the north line of Interstate 264; thence with said east line North 11 degrees 05 minutes 15 seconds West 389.52 feet to an aluminum monument in same; thence leaving said east line South 20 degrees 45 minutes 32 seconds East 123.65 feet to an iron pin and with a curve to the right having a radius of 333.35 feet, the chord of which measures South 09 degrees 51 minutes 52 seconds East 126.00 feet to an iron pin; thence with a curve to the left having a radius of 84.12 feet, the chord of which measures South 43 degrees 05 minutes 04 seconds East 117.11 feet to an iron pin; thence South 02 degrees 43 minutes 23 seconds West 60.00 feet to a point; thence with a curve to the right having a radius of 3764 feet, the chord of which measures North 87 degrees 09 minutes 02 seconds West 16.61 feet to a point; thence North 87 degrees 35 minutes 21 seconds West 51.10 feet to the point of beginning, containing 10909.35 square feet.

PORTION BETWEEN OLD PARK AVENUE AND LOUISVILLE AVENUE

Beginning at an iron pin in the west line of Old Park Boulevard North 11 degrees 05 minutes 15 seconds West 509.09 feet as measured along said east line from its intersection with the north line of Interstate 264; thence leaving said west line North 87 degrees 35 minutes 21 seconds West 17.71 feet to an aluminum monument and North 88 degrees 40 minutes 53 seconds West 93.97 feet to an aluminum monument; thence with a curve to the left having a radius of 335.00 feet, the chord of which measures South 62 degrees 11 minutes 05 seconds West 346.42 feet to an aluminum monument at its intersection with the east line of Louisville Avenue; thence with said east line North 11 degrees 05 minutes 24 seconds West 90.03 feet to an aluminum monument; thence leaving said east line and with a curve to the right having a radius of 401.00 feet, the chord of which measures North 66 degrees 58 minutes 34 seconds East 355.87 feet to an aluminum monument; thence South 86 degrees 40 minutes 53 seconds East 53.89 feet to an aluminum monument and North 61 degrees 57 minutes 58 seconds East 41.42 feet to an aluminum monument at its intersection with the west line of Old Park Boulevard aforesaid; thence with said west line South 11 degrees 05 minutes 15 seconds East 90.10 feet to the point of beginning, containing 34384 square feet.

PORTION BETWEEN SOUTHERN HEIGHTS BOULEVARD AND INTERSTATE 264

Beginning at an iron pin in the north line of Southern Heights Boulevard, South 78 degrees 57 minutes 45 seconds West 52.86 feet as measured along said north line from its intersection with the east line of the tract conveyed to Louisville Regional Airport Authority of record in Deed Book 6585, Page 401 in the office of the Clerk of Jefferson County, Kentucky; thence with said north line South 78 degrees 57 minutes 45 seconds West 72.14 feet to an iron pin in same; thence leaving said north line North 11 degrees 05 minutes 23 seconds West 185.02 feet to an iron pin at its intersection with the south line of Interstate 264; thence with said south line North 78 degrees 48 minutes 58 seconds East 78.90 feet to an iron pin in same; thence leaving said south line South 08 degrees 53 minutes 37 seconds East 185.34 feet to the point of beginning, containing 13955 square feet.

PORTION BETWEEN SOUTHERN HEIGHTS BOULEVARD AND HIAWATHA AVENUE

Beginning at an iron pin at the intersection of the south line of Southern Heights Boulevard with the east line of Louisville Avenue; thence with said south line North 78 degrees 57 minutes 45 seconds East 71.24 feet to an iron pin in same; thence leaving said south line and with a curve to the left having a radius of 3694 feet, the chord of which measures South 10 degrees 46 minutes 00 seconds East 41.68 feet to a

point; thence South 11 degrees 05 minutes 23 seconds East 1168.16 feet to an iron pin at its intersection with the north line of Hiawatha Avenue; thence with said north line South 78 degrees 57 minutes 45 seconds West 71.00 feet to an iron pin at its intersection with the east line of Louisville Avenue aforesaid; thence with said east line North 11 degrees 05 minutes 23 seconds West 1209.84 feet to the point of beginning, containing 85902 square feet.

PORTION BETWEEN HIAWATHA AVENUE AND NEVADA AVENUE

Beginning at an iron pin at the intersection of the south line of Hiawatha Avenue with the east line of Louisville Avenue; thence with said south line North 78 degrees 57 minutes 45 seconds East 71.00 feet to an iron pin in same; thence leaving said south line South 11 degrees 05 minutes 23 seconds East 604.07 feet to an aluminum monument; thence with a curve to the left having a radius of 399 feet, the chord of which measures South 32 degrees 47 minutes 28 seconds East 250.70 feet to an aluminum monument; thence South 54 degrees 29 minutes 32 seconds East 375.04 feet to an aluminum monument; thence North 35 degrees 30 minutes 28 seconds East 14.00 feet to an iron pin and South 54 degrees 29 minutes 32 seconds East 151.73 feet to an iron pin at its intersection with the north line of Nevada Avenue; thence with said north line South 78 degrees 57 minutes 45 seconds West 228.05 feet to an iron pin in same; thence leaving said north line North 25 degrees 38 minutes 31 seconds East 86.83 feet to an aluminum monument; thence North 54 degrees 29 minutes 32 seconds West 355.04 feet to an aluminum monument and with a curve to right having a radius of 405 feet, the chord of which measures North 32 degrees 47 minutes 28 seconds West 299.51 feet to an aluminum monument; thence South 78 degrees 54 minutes 37 seconds West 5.00 feet to an iron pin at its intersection with the east line of Louisville Avenue aforesaid; thence with said east line North 11 degrees 05 minutes 23 seconds West 604.13 feet to the point of beginning, containing 99452 square feet.

PORTION ON SOUTH SIDE OF NEVADA AND WEST SIDE OF OLD PARK BOULEVARD

Beginning at an iron pin in the west line of Old Park Boulevard South 11 degrees 04 minutes 26 seconds East 23.4' as measured along said west line from its intersection with the south line of Nevada Avenue, as widened; thence with said west line South 11 degrees 04 minutes 26 seconds East 81.30 feet to an iron pin in same; thence leaving said west line and with a curve to the right having a radius of 534 feet, the chord of which measures North 59 degrees 29 minutes 43 seconds West 93.14 feet to an aluminum monument; thence North 54 degrees 29 minutes 52 seconds West 25.77 feet and with a curve to the left having a radius of 80 feet, the chord of which measures North 60 degrees 12 minutes 38 seconds West 15.94 feet to an aluminum monument at its intersection with the south line of Nevada Avenue aforesaid; thence with said south line North 59 degrees 40 minutes 06 seconds East 41.78 feet and North 78 degrees 57 minutes 45 seconds East 37.83 feet to an iron pin in same; thence leaving said south line South 54 degrees 29 minutes 32 seconds East 30.17 feet and with a curve to the left having a radius of 470 feet, the chord of which measures South 54 degrees 35 minutes 10 seconds East 1.54 feet to the point of beginning, containing 5558 square feet.

PORTION ON SOUTH SIDE OF NEVADA AND EAST SIDE OF OLD PARK BOULEVARD

Beginning at iron pin in the east line of Old Park Boulevard, North 11 degrees 04 minutes 31 seconds West 92.83 feet as measured along said east line from its intersection with the north line of Woodlawn Avenue; thence with said east line North 11 degrees 04 minutes 31 seconds West 66.80 feet to an iron pin in same; thence leaving said east line and with a curve to the left having a radius of 470 feet, the chord of which measures South 68 degrees 31 minutes 25 seconds East 66.65 feet to an aluminum monument; thence South 72 degrees 35 minutes 21 seconds East 259.88 feet to an iron pin at its intersection with the north line of Woodlawn Avenue; thence with said north line South 78 degrees 57

minutes 45 seconds West 113.36 feet to an iron pin; thence leaving said north line North 72 degrees 35 minutes 21 seconds West 190.81 feet to an aluminum monument and with a curve to the right having a radius of 534 feet, the chord of which measures North 72 degrees 22 minutes 25 seconds West 4.02 feet to the point of beginning, containing 14101 square feet.

PORTION ON SOUTH SIDE OF WOODLAWN AVENUE AND WEST SIDE OF CRITTENDEN DRIVE

Beginning at an iron pin at the intersection of the north line of Wabasso Avenue with the west line of Crittenden Drive; thence with said north line South 78 degrees 57 minutes 45 seconds West 55.29 feet to an aluminum monument in same; thence leaving said north line North 29 degrees 49 minutes 46 seconds East 48.25 feet to an aluminum monument; thence with a curve to the left having a radius of 371 feet, the chord of which measures North 51 degrees 16 minutes 47 seconds West 269.65 feet to an aluminum monument; thence North 72 degrees 35 minutes 21 seconds West 38.20 feet to an iron pin at its intersection with the south line of Woodlawn Avenue; thence with said south line North 78 degrees 57 minutes 45 seconds East 105.88 feet to an iron pin in same; thence leaving said south line and with a curve to the right having a radius of 425 feet, the chord of which measures South 49 degrees 11 minutes 27 seconds East 233.95 feet to an aluminum monument at its intersection with the west line of Crittenden aforesaid; thence with said west line South 02 degrees 03 minutes 10 seconds East 82.03 feet to the point of beginning, containing 17386 square feet.

DEDICATION OF CRITTENDEN CONNECTOR REV 3-03

PORTION ON THE EAST SIDE OF STRAWBERRY LANE

Beginning at an iron pin at the intersection of the south line of the tract conveyed to Welding and Therapy Service, Inc., of record in Deed Book 4736 Page 581 in the office of the Clerk of Jefferson County, Kentucky, with the west line of Crittenden Drive Re-connection (Deed Book 8946, Page 318 in the office aforesaid); thence with said west line and with a curve to the left having a radius of 537.46 feet, the chord of which measures South 52 degrees 04 minutes 37 seconds West 255.39 feet thence leaving said northwesterly line and with a curve to the left having a radius of 377.95 feet, the chord of which measures North 54 degrees 20 minutes 50 seconds West 129.17 feet to an iron pin with identifier #2747; North 73 degrees 30 minutes 14 seconds West 132.38 feet to an iron pin with identifier #2747, North 62 degrees 37 minutes 06 seconds West 20.00 feet to an iron pin with identifier #2747, North 39 degrees 59 minutes 55 seconds West 65.00 feet to an iron pin with identifier #2747, North 62 degrees 37 minutes 06 seconds West 126.75 feet to an iron pin with identifier #2747 and with a curve to the right having a radius of 540.00 feet, the chord of which measures North 51 degrees 29 minutes 55 seconds West 208.29 feet to an iron pin with identifier #2747; thence North 40 degrees 22 minutes 44 seconds West 155.41 feet to an iron pin with identifier #2747, South 49 degrees 37 minutes 16 seconds West 10.00 feet to an iron pin with identifier #2747 and with a curve to the left having a radius of 125.00 feet, the chord of which measures North 50 degrees 03 minutes 28 seconds West 42.03 feet to an iron pin with identifier #2747; thence North 11 degrees 05 minutes 46 seconds West 115.47 feet to an iron pin with identifier #2747; thence with a curve to the right having a radius of 225.00 feet, the chord of which measures South 74 degrees 18 minutes 48 seconds East 41.15 feet to an iron pin with identifier #2747 at its intersection with the southwesterly line of the Brown Forman tract aforesaid; thence with said southwesterly line South 25 degrees 22 minutes 57 seconds East 11.07 feet to its intersection with the northeasterly line of the tract conveyed to Louisville Regional Airport Authority by deed of record in Deed Book 8683, Page 805 in the office aforesaid; thence with said northeasterly line, with a curve to the right having a radius of 217.50 feet, the chord of which measures South 52 degrees 54 minutes 58 seconds East 105.53 feet to a point in same; thence South 38 degrees 52 minutes 42 seconds East 149.88 feet and with a curve to the left having a radius of 461.50 feet, the chord of which measures South 45 degrees 45 minutes 06 East 86.16 feet to its intersection with the south line of the tract conveyed to Brown Forman Corporation by deed of record in Deed Book 6517, Page 834 in the office aforesaid; thence with said south line South 65 degrees 53 minutes 57 seconds East 270.70 feet to a corner common to the Welding and Therapy Service In., tract of record in Deed Book 7054, Page 158 in the office aforesaid; thence with lines common to same, South 47 degrees 05 minutes 11 seconds East 61.99 feet to an iron pin, South 75 degrees 02 minutes 26 seconds East 162.38 feet to an iron pin, South 84 degrees 38 minutes 23 seconds East 100.01 feet to an iron pin at a corner common to another tract conveyed to Welding and Therapy Service, Inc., by deed of record in Deed Book 4736, Page 581 in the office aforesaid; thence with

the south line of same North 83 degrees 53 minutes 10 seconds East 98.44 feet to the point of beginning, containing 92,231.07 square feet

PORTION ON THE WEST SIDE OF STRAWBERRY LANE

Beginning at an iron pin with identifier #2747 in the west line of Strawberry Lane, South 11 degrees 08 minutes 28 seconds East 204.28 feet as measured along said west line from an existing iron pin at its intersection with the north line of Lot 5-2 as shown on Minor plat of record in Plat Book 53, Page 58 in the office of the Clerk of Jefferson County, Kentucky; thence with said west line South 11 degrees 08 minutes 28 seconds East 588.56 feet to an iron pin in same; thence leaving said west line North 17 degrees 54 minutes 10 seconds West 42.50 feet, North 11 degrees 08 minutes 28 seconds West 150.22 feet, and with a curve to the left having a radius of 63.50 feet, the chord of which measures North 55 degrees 40 minutes 26 seconds West 33.39 feet to a nail; thence with a curve to the right having a radius of 207.50 feet, the chord of which measures North 06 degrees 46 minutes 36 seconds West 373.44 feet to the point of beginning, containing 37,796.20 square feet or 0.87 acres.