

RECEIVED
 FEB 10 2011
 PLANNING &
 DESIGN SERVICES



DESIGN GROUP
 ARCHITECT

MECHANICAL/ELECTRICAL
 ENGINEERS

BCCLT
 CONSULTING ENGINEERS

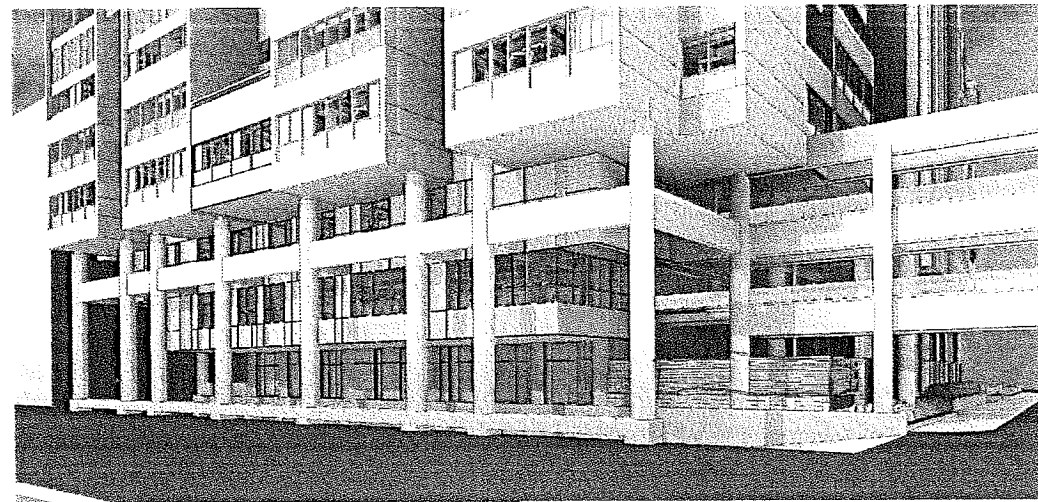
STRUCTURAL ENGINEER

MECH. EQUIPMENT

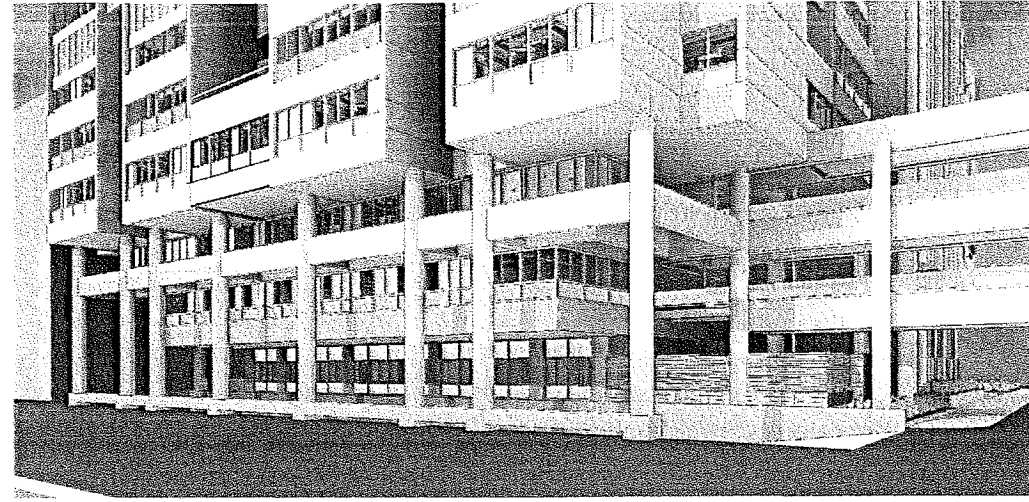
HB&A
 CIVIL ENGINEER

LD&D
 GENERAL CONTRACTOR

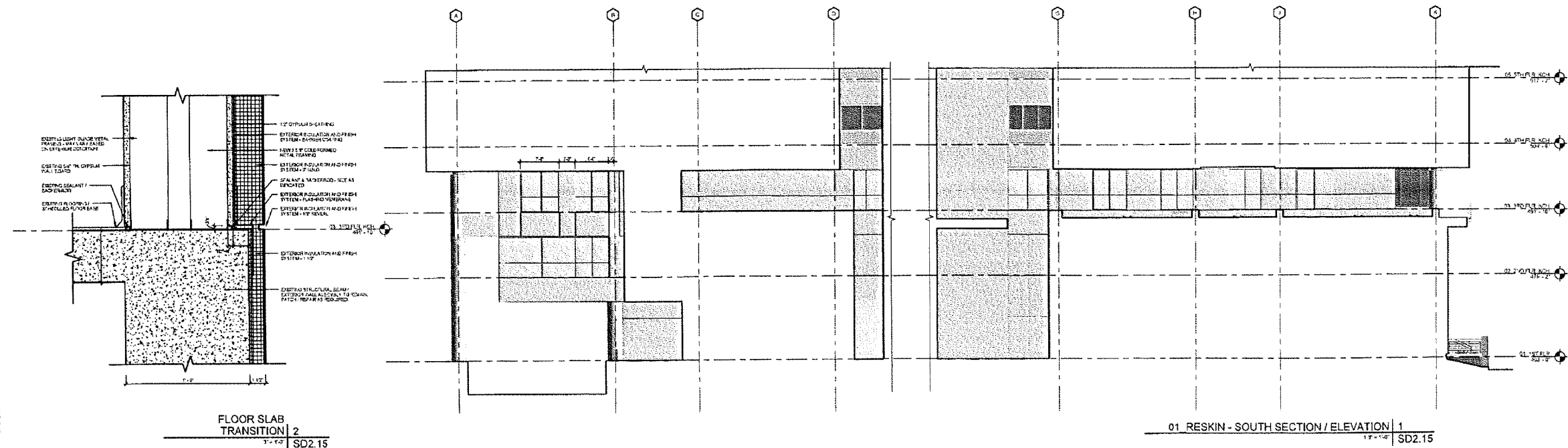
Messer
 Vitraro Building



01 RESKIN - SW | 4
 SD2.15



01 RESKIN - SW (EXIST) | 3
 SD2.15



FLOOR SLAB
 TRANSITION | 2
 SD2.15

01 RESKIN - SOUTH SECTION / ELEVATION | 1
 SD2.15

CLIENT

NORTON HEALTHCARE

NORTON CHILDREN'S
 HOSPITAL-PHASE II
 IMPLEMENTATION

231 E CHESTNUT ST
 LOUISVILLE, KY 40202

DATE: 02/01/2011

Page 4 of 4
 Project No. 1000000000
 Date: 02/01/2011
 Time: 1:27:17
 Revised:

SD2.15

17 CUP 1000