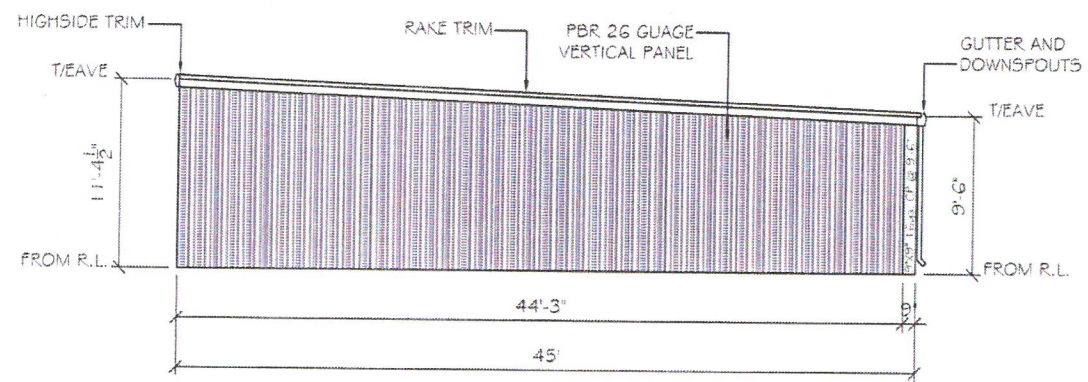


USING TYPICAL PIER AND HEADER UNLESS INDICATED OTHERWISE

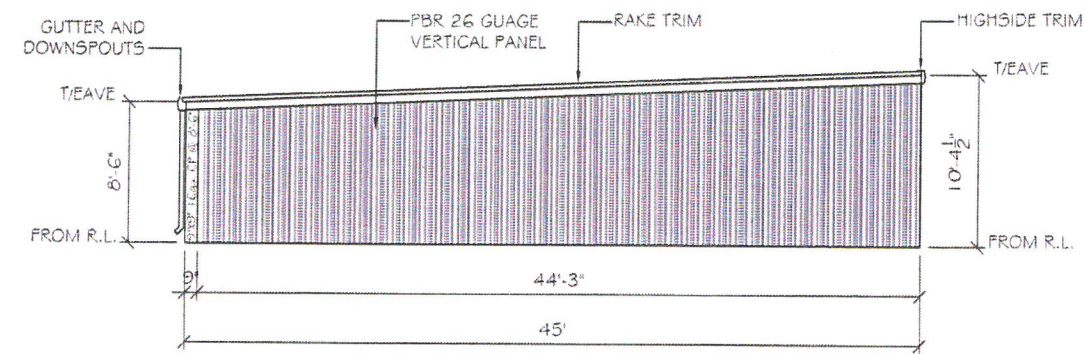
PIER TEX COTE	3" x 1 5/8"
	1 1/2" x 1 5/8"
	1 1/2" x 1 5/8"
CORNER PIER	1 1/2" x 1 5/8"
DOOR WALL HEADER	3" x 9" x 1 5/8"
	1 1/2" x 1 5/8"

DOWNSPOUTS	30" O.C. MAX
GUTTER	60" O.C. MAX

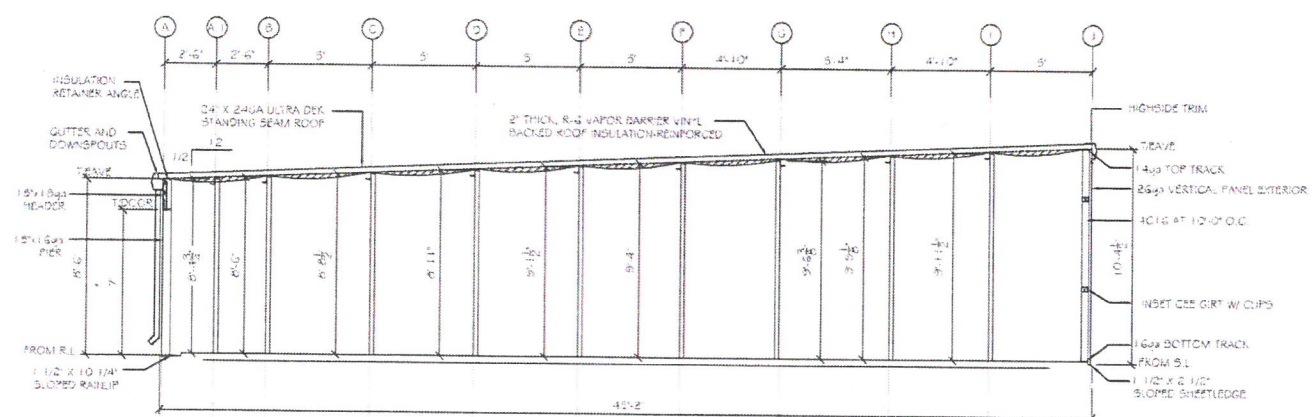
NOTES:
 1. ALL DOORS, ROLLUP DOORS, SLIDING GLASS DOORS, WINDOWS AND TRANSOMS SHALL BE FIELD VERIFIED PRIOR TO FABRICATION TO INSURE PROPER FIT. SUBCONTRACTOR SHALL NOT FABRICATE FROM THE CONSTRUCTION DOCUMENTS. SHOULD THE SUBCONTRACTOR CHOOSE TO FABRICATE THE PREVIOUSLY REFERENCED ITEMS FROM THE CONTRACT PERIODS, DOCUMENTS AND NOT FROM THE FIELD THEY DO SO AT THEIR OWN RISK AND ALL MODIFICATIONS REQUIRED AS A RESULT SHALL BE AT THEIR OWN RISK.



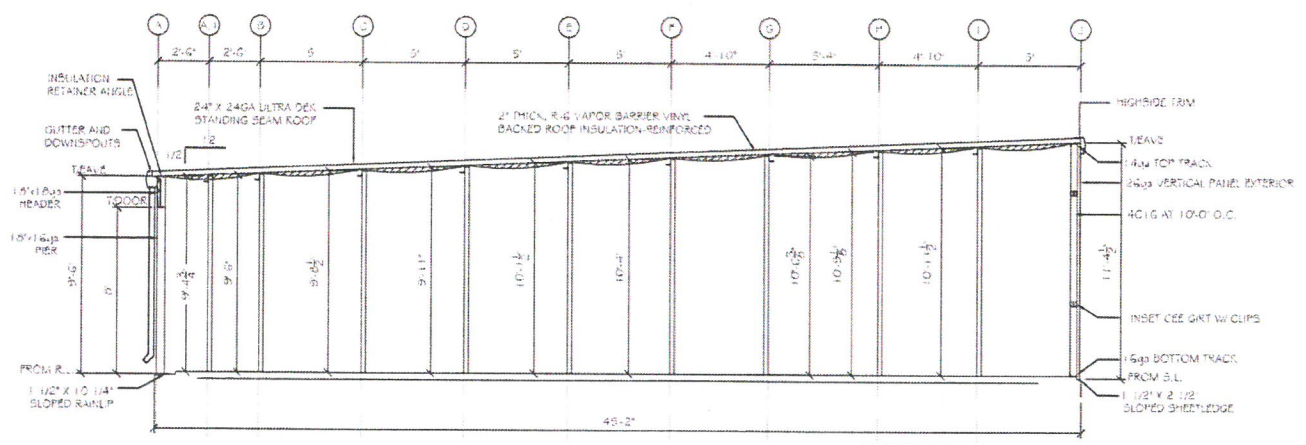
BUILDING 9 EAST ELEVATION



BUILDING 9 WEST ELEVATION



SECTION A-A
 SCALE: 1/4" = 1'
 NOTE: VERTICAL COLUMN DIMENSION IS ACTUAL LENGTH OF CEE FROM P.P.



SECTION A.1-A.1
 SCALE: 1/4" = 1'
 NOTE: VERTICAL COLUMN DIMENSION IS ACTUAL LENGTH OF CEE FROM P.P.

MARKUPS

NO.	DATE	BY	DESCRIPTION

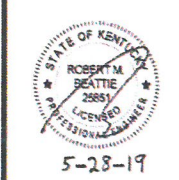
REVISIONS

NO.	DATE	BY	DESCRIPTION

BUILDING 9
 ELEVATIONS & SECTION

STOP-ALL CANE RUN FH 2
 4100 CANE RUN ROAD
 LOUISVILLE, KY 40216

RABCO
 INNOVATIVE METAL BUILDING SYSTEMS
 1000 WEST GLEN COACHWAY, SUITE 407
 LOUISVILLE, KY 40216



RECEIVED
 SEP 06 2019
 DESIGN SERVICES

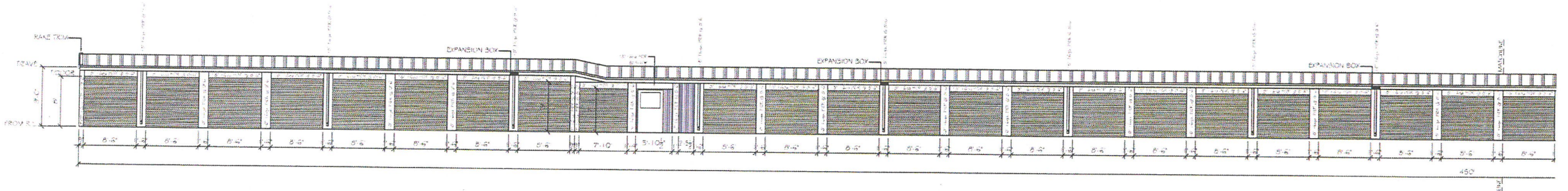
NO.	DATE	BY	DESCRIPTION

S-1-5

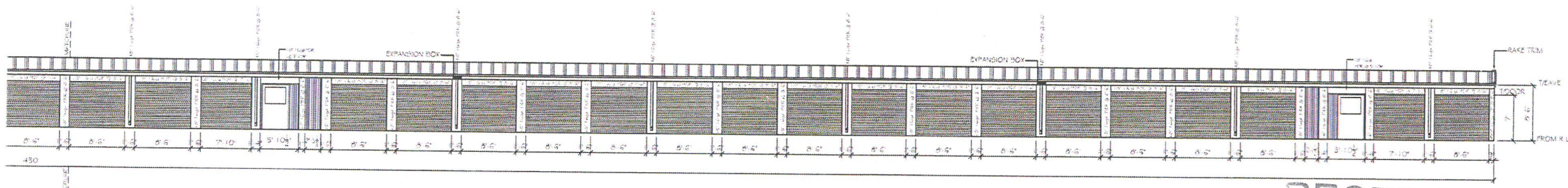
19-AMEN0-0001

TYPICAL PER AND HEADER UNLESS INDICATED OTHERWISE PER TYP. CODE	
3" X 1 1/2"	
1 1/2" X 1 1/2"	
1 1/2" X 1 1/2"	
CORNER PER	3" X 3" X 1 1/2"
BOE WALL HEADER	1 1/2" X 1 1/2"
DOWNSPUTS 30" O.C. MAX.	
GUTTER 24" BOX 30" O.C. MAX.	

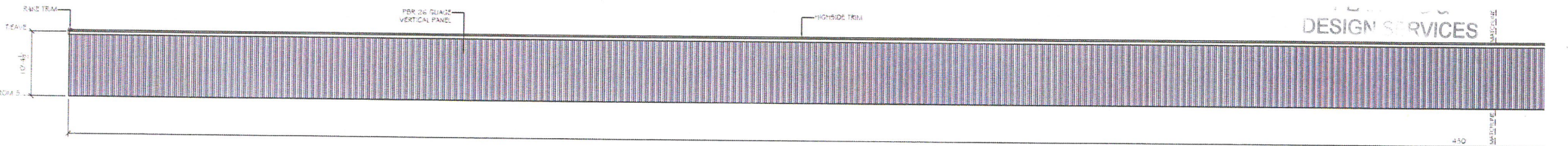
NOTES
 ALL VAN DOORS, ROLL UP DOORS, SLIDING GLASS DOORS, WINDOWS AND REVISIONS SHALL BE FIELD VERIFIED PRIOR TO FABRICATION TO ENSURE PROPER FIT. A.C.S. CONTRACTOR SHALL NOT FABRICATE FROM THE CONSTRUCTION DOCUMENTS SHOULD THE O.C. SUBCONTRACTOR CHOOSE TO FABRICATE THE PRODUCTS MEMORANDUM FROM THE CONTRACT/PROPOSAL DOCUMENTS AND NOT FROM THE FIELD THEY DO SO AT THEIR OWN RISK AND ANY AND ALL MODIFICATIONS REQUIRED AS A RESULT SHALL BE AT THEIR OWN EXPENSE.



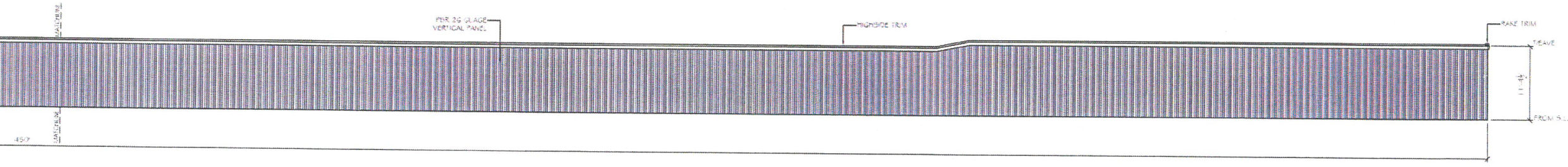
BUILDING 9 NORTH ELEVATION



BUILDING 9 NORTH ELEVATION



BUILDING 9 SOUTH ELEVATION



BUILDING 9 SOUTH ELEVATION

MARKUPS		
NO.	DATE	DESCRIPTION

RABCO
 INNOVATIVE METAL BUILDING SYSTEMS
 404 LUTHER PARK DRIVE, SUITE 200
 LOUISVILLE, KY 40216
 502-598-0224 / 502-598-7757 FAX: 502-598-7755

RECEIVED
 SEP 06 2019
 DESIGN SERVICES



PROJECT NO.	
SHEET NO.	
DATE	
DRAWN BY	
CHECKED BY	
SCALE	