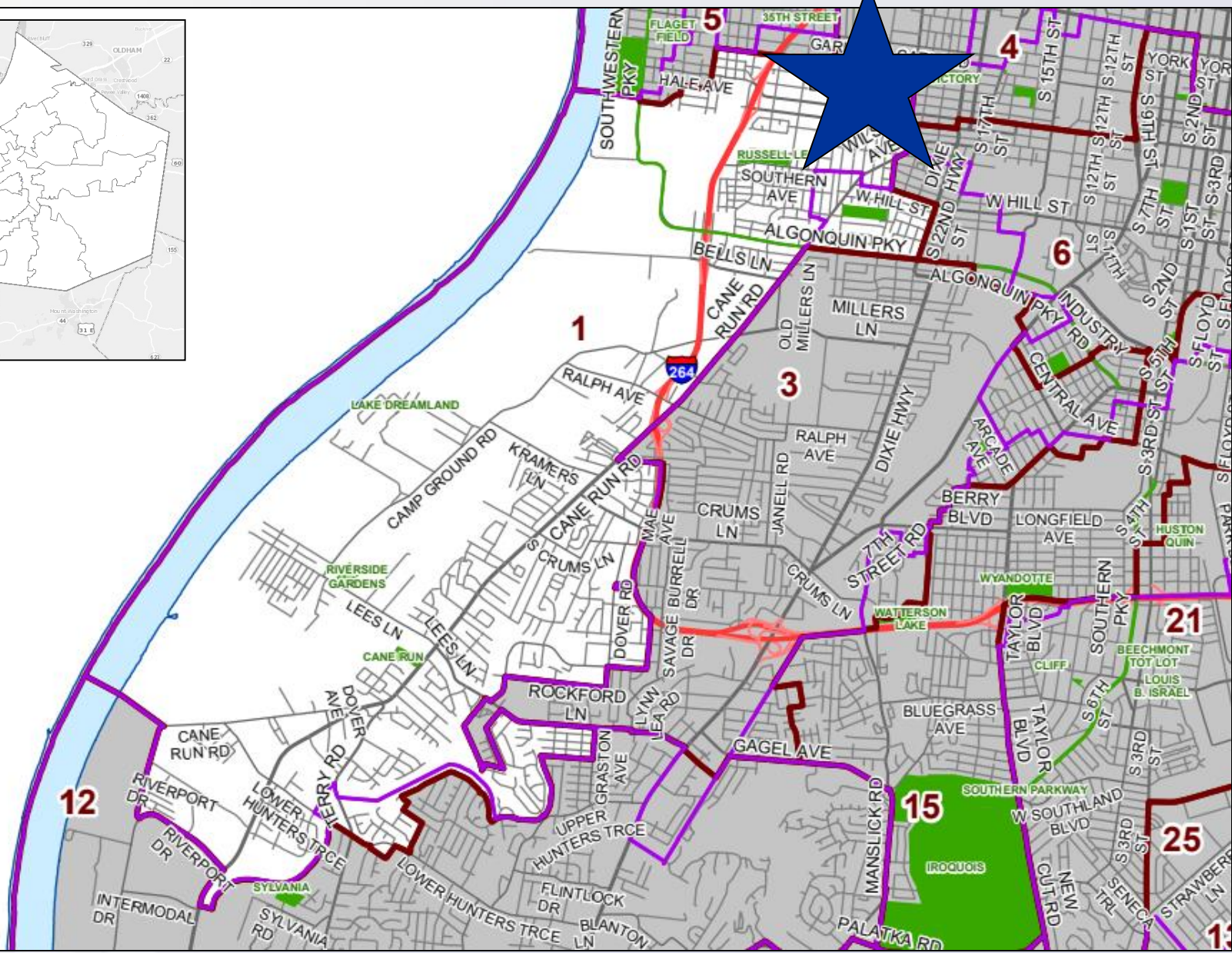
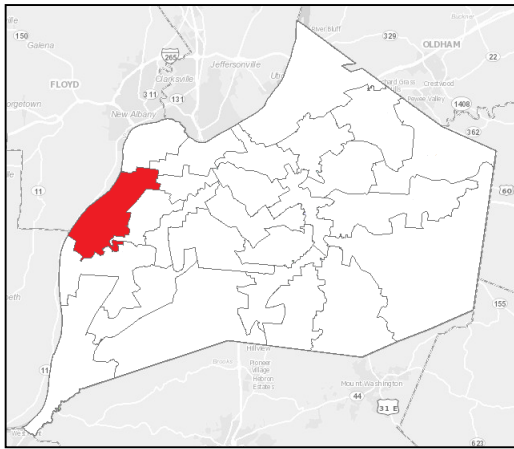


21-STRCLOSURE-0030

EWING ST ALLEY CLOSURE

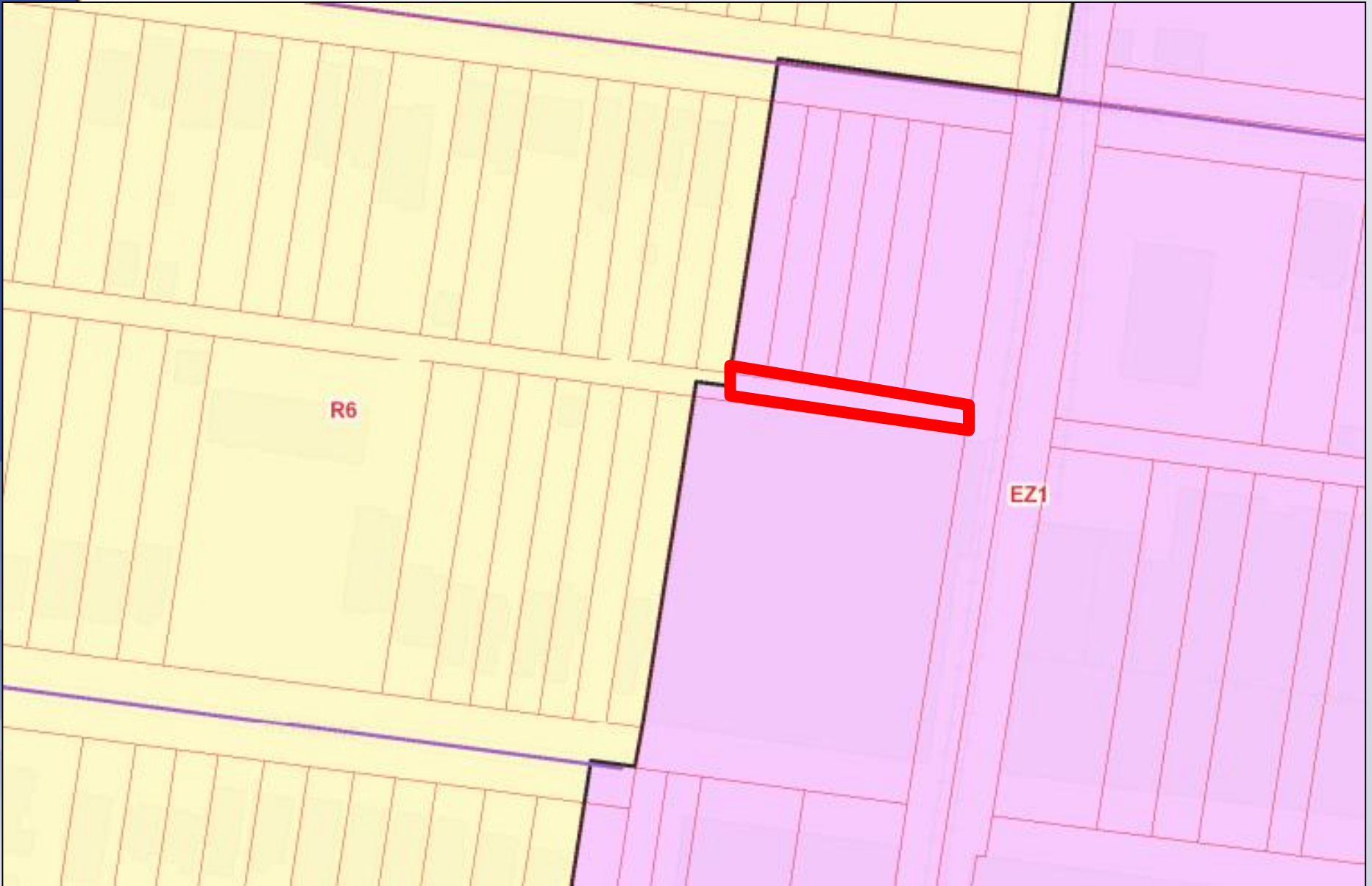


Planning & Zoning Committee
February 8, 2022



Requests / Case Summary

- Closure of a 20-foot unimproved alley
- The ROW terminates at the railroad tracks located immediately east of the proposed closure area
- The area is not improved as an alley and is currently part of the loading area associated with the business



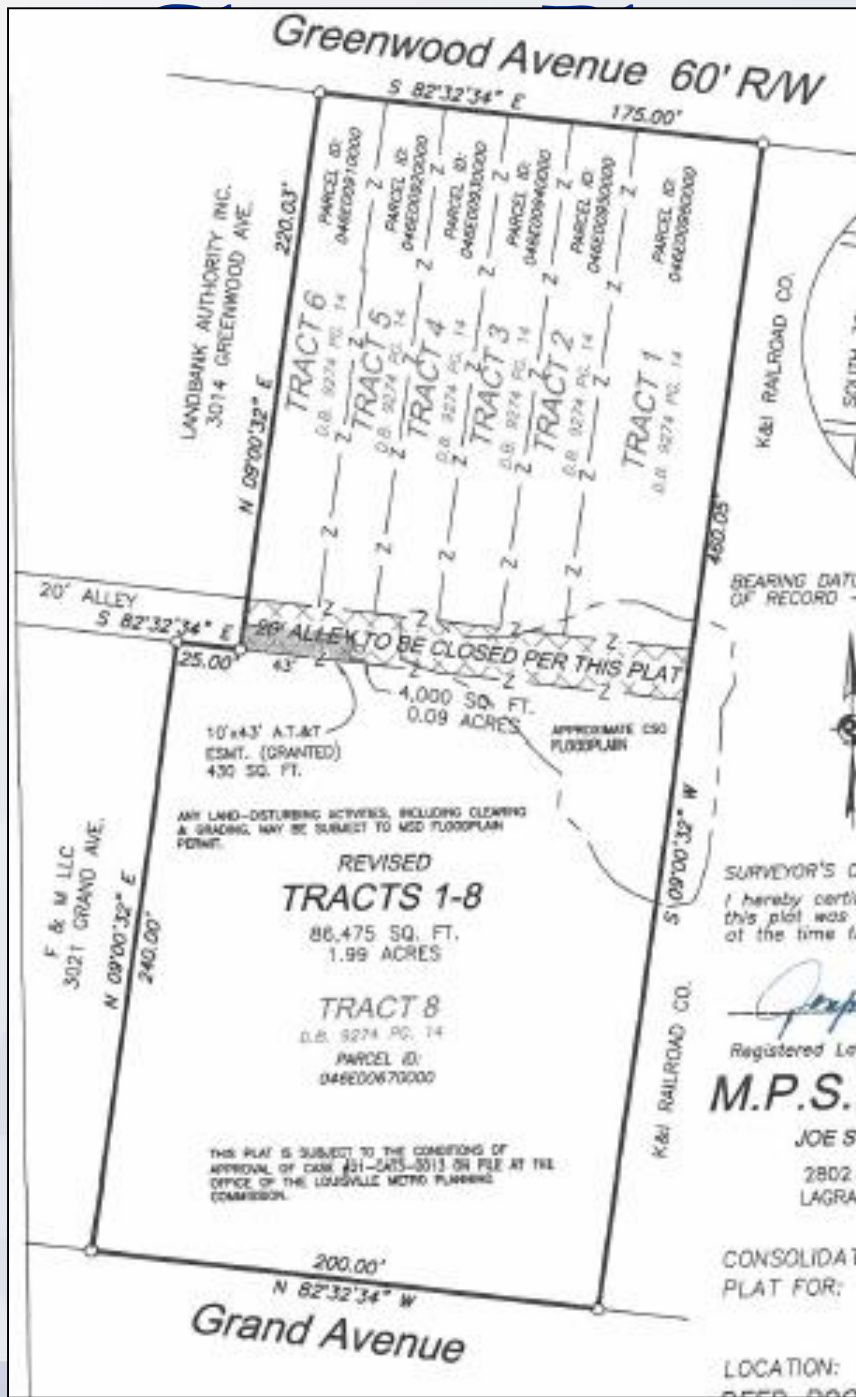
R6

EZ1



Louisville

21-STRCLOSURE-0030



Public Meetings

- LD&T meeting on 12/9/2021
- Planning Commission public hearing on 12/16/2021
 - No one spoke in opposition.
 - Motion to recommend approval of the right-of-way closure passed by a vote of 9-0.