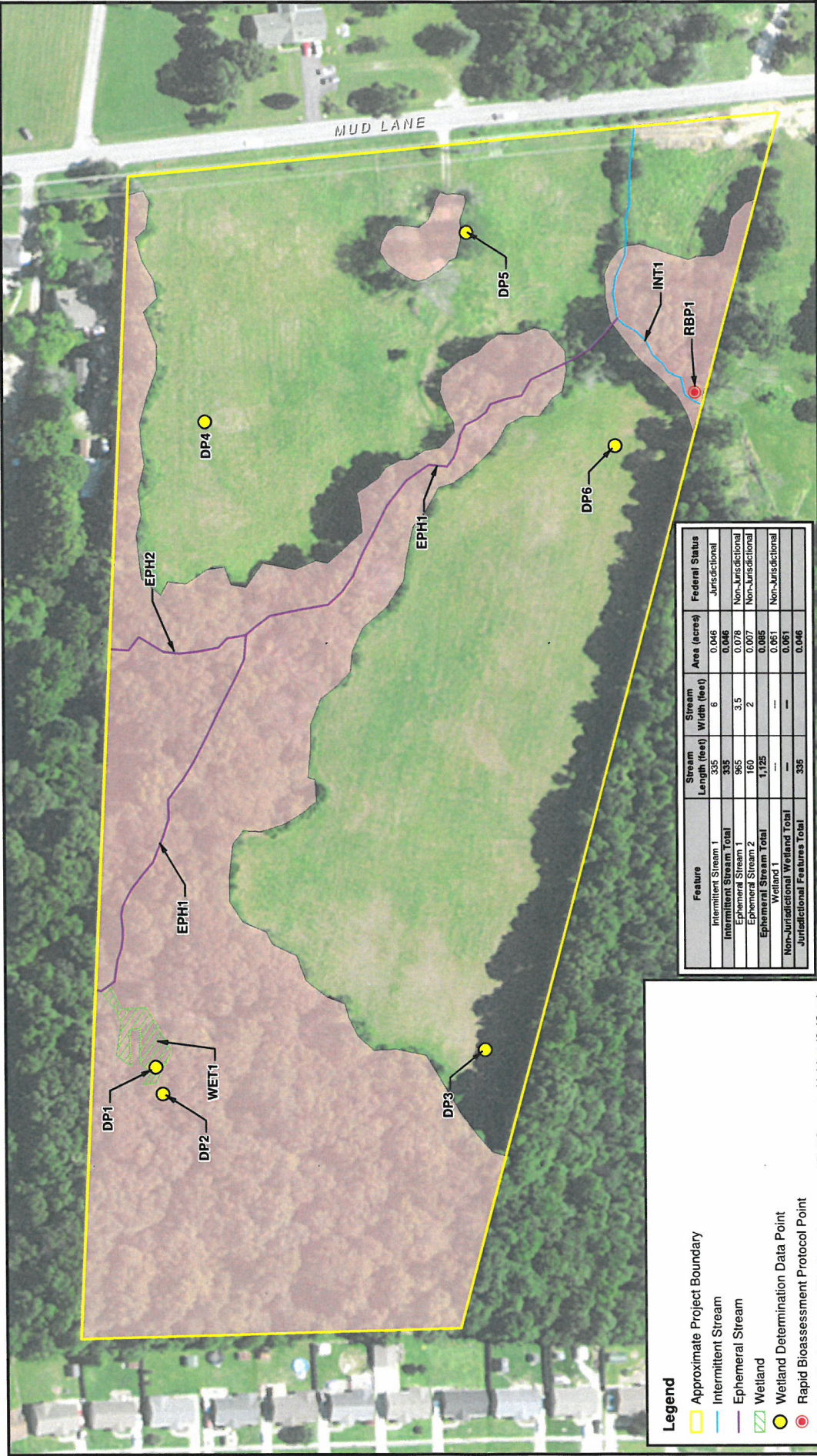


OCT 24 2022

RECEIVED

Source: Aerial - (NAIP-FSA) from kygisserver.ky.gov ArcGIS services (2018).

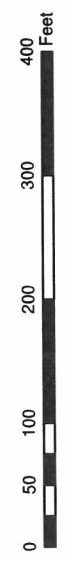


Legend

- Approximate Project Boundary
- Intermittent Stream
- Ephemeral Stream
- Wetland
- Wetland Determination Data Point
- Rapid Bioassessment Protocol Point
- Suitable Indiana and Northern Long-eared Bat Summer Habitat (6.43 ac)

Feature	Stream Length (feet)	Stream Width (feet)	Area (acres)	Federal Status
Intermittent Stream 1	335	6	0.048	Jurisdictional
Intermittent Stream Total	335		0.048	
Ephemeral Stream 1	965	3.5	0.078	Non-Jurisdictional
Ephemeral Stream 2	160	2	0.007	Non-Jurisdictional
Ephemeral Stream Total	1,125		0.085	
Wetland 1	--	--	0.061	Non-Jurisdictional
Non-Jurisdictional Wetland Total	--	--	0.061	
Jurisdictional Features Total	335		0.048	

NOTE: JURISDICTIONAL WATERWETLAND BOUNDARIES WERE DELINEATED AND SUPERVISED BY RES WETLAND SCIENTISTS ON 08-25-2021. THE NON-JURISDICTIONAL BOUNDARIES WERE VERIFIED BY THE U.S. ARMY CORPS OF ENGINEERS. USE OF THIS MAP IS FOR PRELIMINARY PLANNING PURPOSES ONLY.



3902 MUD LANE PROPERTY
JEFFERSON COUNTY, KENTUCKY



ECOLOGICAL RESOURCES
MAP

REVISED DATE: 08-04-21 | DRAWN BY: CRMBJD

FIGURE 1

22-0079-ZONE