

DEC 14 2018

DESIGN SERVICES

18 Varnance 1116

Top of sign

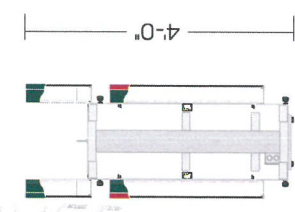
16' OAH

globe



EXISTING:
D/F 4'-0" X 10'-0" TOP CABINET
3'-1" X 8'-0" READER BOARD

10'-0"



4'-0"



PROPOSED:
D/F 4'-X10' CHANNEL LETTERS LOGO
D/F 3'-X8' MONOCHROME RED EMC

8'-0"



3'-1"

GRAPHIC DETAIL
SCALE: 3/8" = 1'-0"

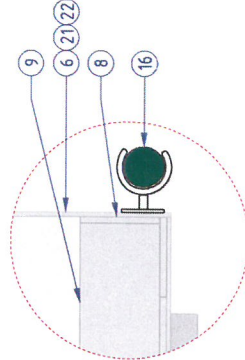
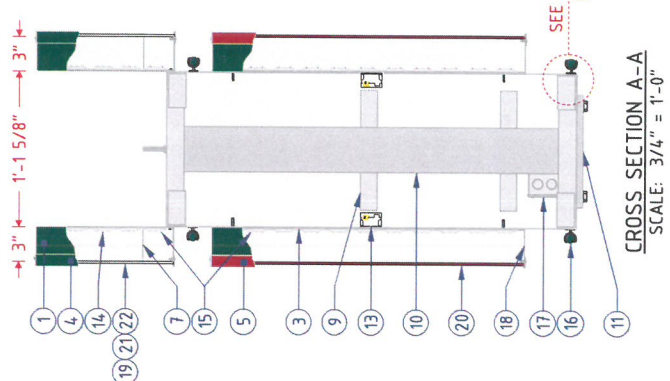
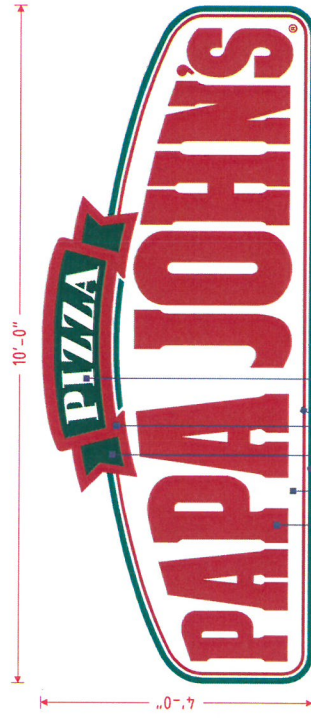
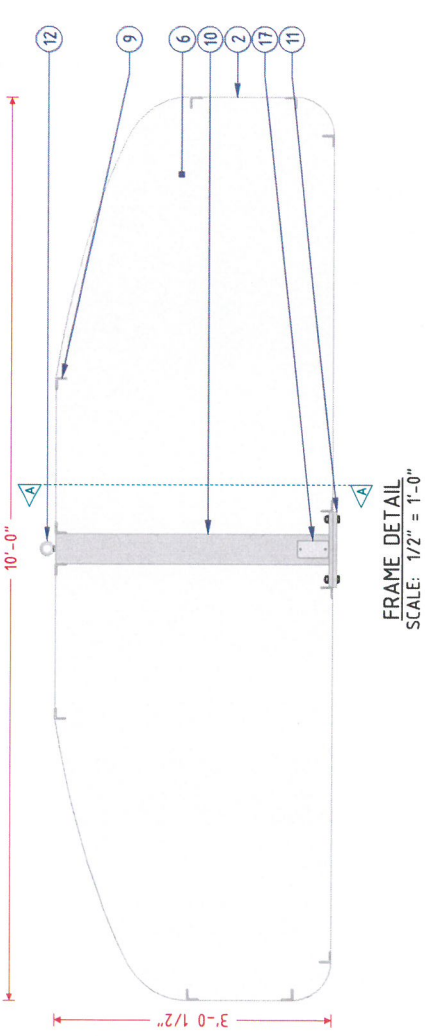
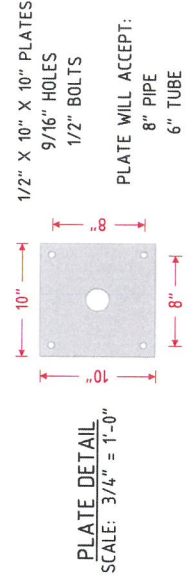
NOTE: Elevation drawings are for customer approval only, drawings are not to be used as any installation guide, all dimensions must be verified before installation.

Customer:	PAPA JOHN'S PIZZA	Date:	11/21/17	Prepared By:	CB	<small>Note: Color output may not be exact when viewing or printing this drawing. All colors used are PMS or the closest CMYK equivalent. If these colors are incorrect, please provide the correct PMS match and a revision to this drawing will be made.</small>
Location:	LOUISVILLE, KY	File Name:	162034 - LOUISVILLE, KY	Eng:	-	
DISTRIBUTED BY SIGN UP COMPANY 700 21st Street Southwest PO Box 210 Watertown, SD 57201-0210 1.800.843.9888 · www.personasigns.com						persona SIGNS LIGHTING IMAGE

PAPA JOHN'S 4 X 10 DF CHANNEL LETTER LOGO	
NO.	PART/DESCRIPTION
1	.050" X 3" ALUMINUM RETURNS
2	.063" X 3" ALUMINUM SKIN
3	.063" ALUMINUM BACK
4	1" GREEN TRIM CAP
5	1" RED TRIM CAP (3/4" TRIM CAP ON INSIDE OF P, A, & O)
6	.063" ALUMINUM FACE
7	FORMED ALUMINUM BAFFLE
8	.080 ALUMINUM STANDING LEG
9	1 1/2" X 1 1/2" X 3/16" ALUMINUM ANGLE
10	4" X 4" X 1/8" SQUARE TUBE
11	PLATE/MATCH PLATE (SEE PLATE DETAIL)
12	1/2" EYEBOLT
13	LED POWER SUPPLIES AS REQUIRED
14	WHITE LED'S AS REQUIRED
15	RED LED'S AS REQUIRED
16	GREEN LED CONTOUR & GUIDE AS REQUIRED
17	ELECTRICAL OUT PROVISION: LEAVE IN BOX
18	DRAIN HOLES AS REQUIRED
19	3/16" 7328 WHITE ACRYLIC FACE
20	3/16" 2283 RED ACRYLIC FACE
21	3M 3632-53 CARDINAL RED TRANSLUCENT FILM (1ST SURFACE)
22	3M 3632-26 GREEN TRANSLUCENT FILM (1ST SURFACE)

NOTES:

- DESIGN FACTOR: TO BE DETERMINED
- 13 5/8" DEEP .063" CUSTOM ALUMINUM FRAME WITH CHANNEL LETTERS
- EXTERIOR FINISH: PAINTED TO MATCH PMS 34-9 C GREEN
- INTERIOR FINISH: PAINTED REFLECTIVE WHITE
- SKINS REMOVABLE FOR SERVICE ACCESS
- U.L. APPROVED
- ELECTRICAL: 4.14 AMPS/120 VOLTS
- SQUARE FOOTAGE:
BOXED = 4.000
ACTUAL = 30.99



RECEIVED
DEC 14 2018
DESIGN SERVICE

NOTE: Elevation drawings are for customer approval only, drawings are not to be used as any installation guide, all dimensions must be verified before installation.

Customer:	PAPA JOHN'S PIZZA	Date:	11/21/17	Prepared By:	CB
Location:	LOUISVILLE, KY	File Name:	162034 - LOUISVILLE, KY	Eng:	-

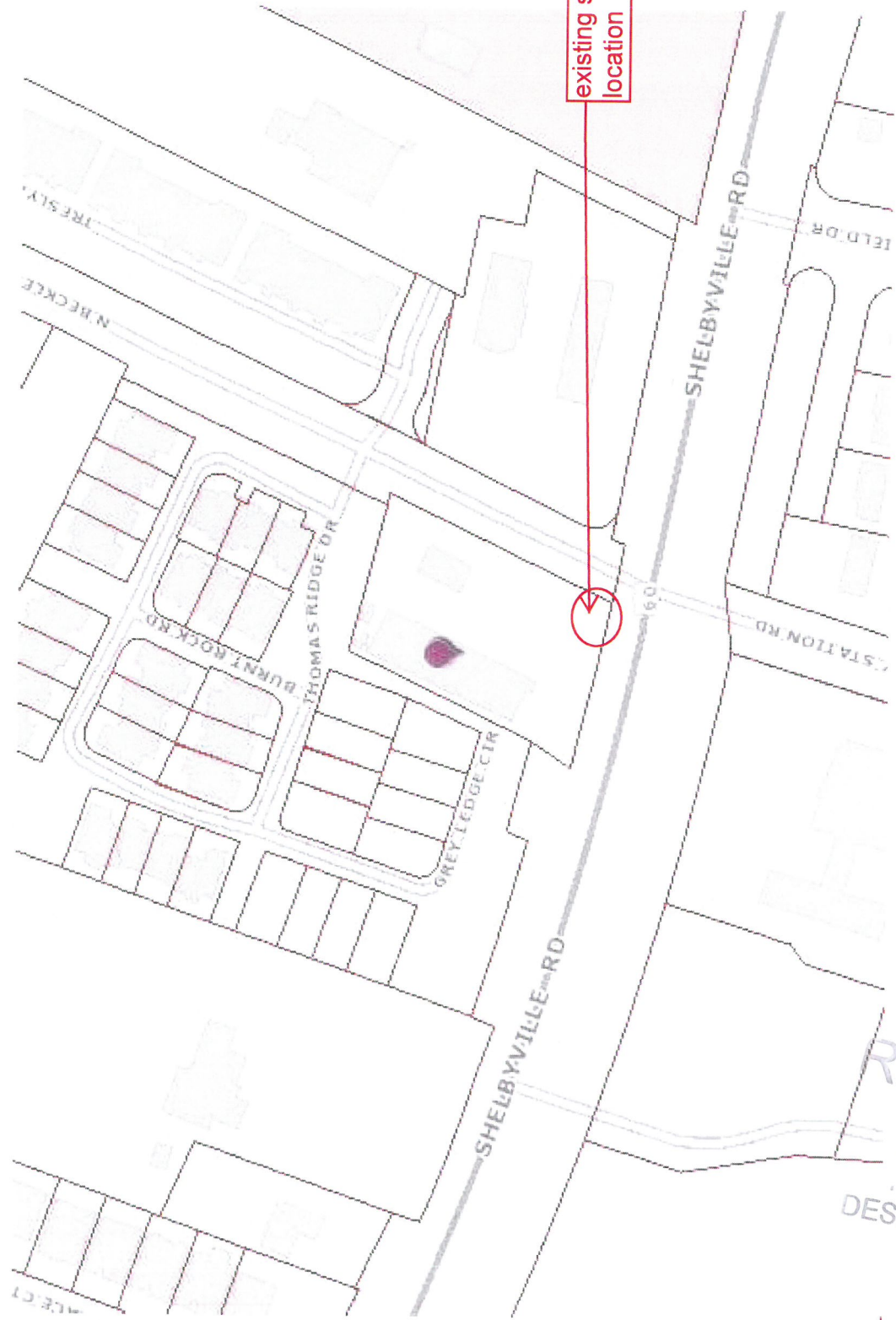
persona
SIGNS | LIGHTING | IMAGE

DISTRIBUTED BY SIGN UP COMPANY
700 21st Street Southwest
PO Box 210
Watertown, SD 57201-0210
1.800.843.9888 · www.personasigns.com

18 Variance 1116

North
←

existing sign
location



RECEIVED
DEC 14 2018
DESIGN SERVICES

18 Variance IIIc