

STATE OF KENTUCKY
 STEVEN L. BURCH
 3022
 LICENSED
 PROFESSIONAL
 LAND SURVEYOR

LAND SURVEYOR'S CERTIFICATE

I hereby certify that the survey for this plat was made under my supervision and that the angular and linear measurements shown thereon are correct to the best of my knowledge and belief. This survey and plat meets or exceeds the minimum standards of governing authorities.

Steven L. Burch #3022 09/18/15
 Land Surveyor License No. 3022 Date

SABAK, WILSON & LINGO INC.
 Engineers, Landscape Architects & Planners
 The Henry Clay
 608 S. Third Street
 Louisville, Kentucky 40202
 PH: 502-584-6271 FAX: 502-584-6292

ZONING - PVD
 NO FORM DISTRICT IN EFFECT
 RELATED CASE: 13SUBDIV1003

**STREET CLOSURE PLAT
 CHAMBERLAIN LANE**

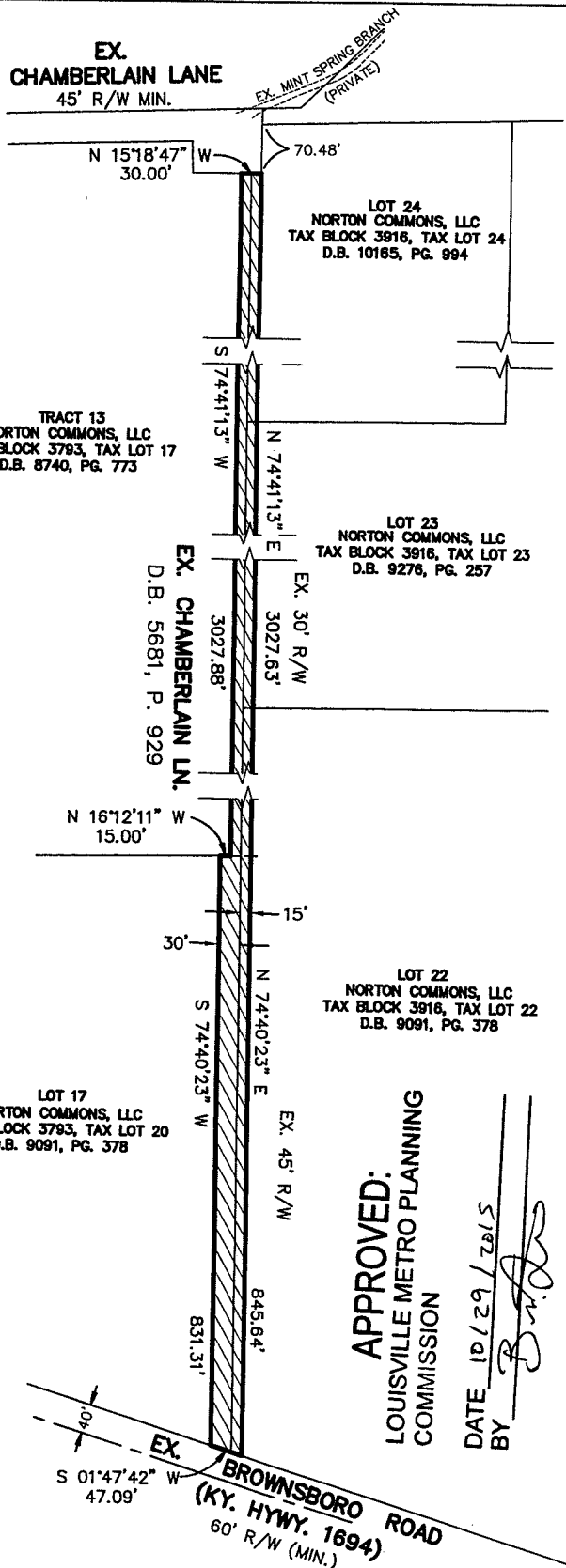
APPLICANT: NORTON COMMONS, LLC
 9418 NORTON COMMONS BLVD. SUITE 300
 PROSPECT, KENTUCKY 40059

TAX BLOCK 3793, TAX LOTS 17 & 20
 TAX BLOCK 3916, TAX LOTS 22, 23 & 24
 D.B. 8740, PG. 773, D.B. 9091, PG. 378
 D.B. 9276, PG. 257, D.B. 10165, PG. 994

LOCATION: CHAMBERLAIN LANE
 PROSPECT, KENTUCKY 40059

DATE: 08/17/15
 REV.: 09/18/15

SCALE: 1"=200'



APPROVED:
 LOUISVILLE METRO PLANNING
 COMMISSION

DATE: 5/18/16
 BY: *[Signature]*

PROPOSED STREET CLOSURE
 128,571 SQ. FT.
 2,952 AC.

15 STREETS 10/15
 GRAPHIC SCALE

