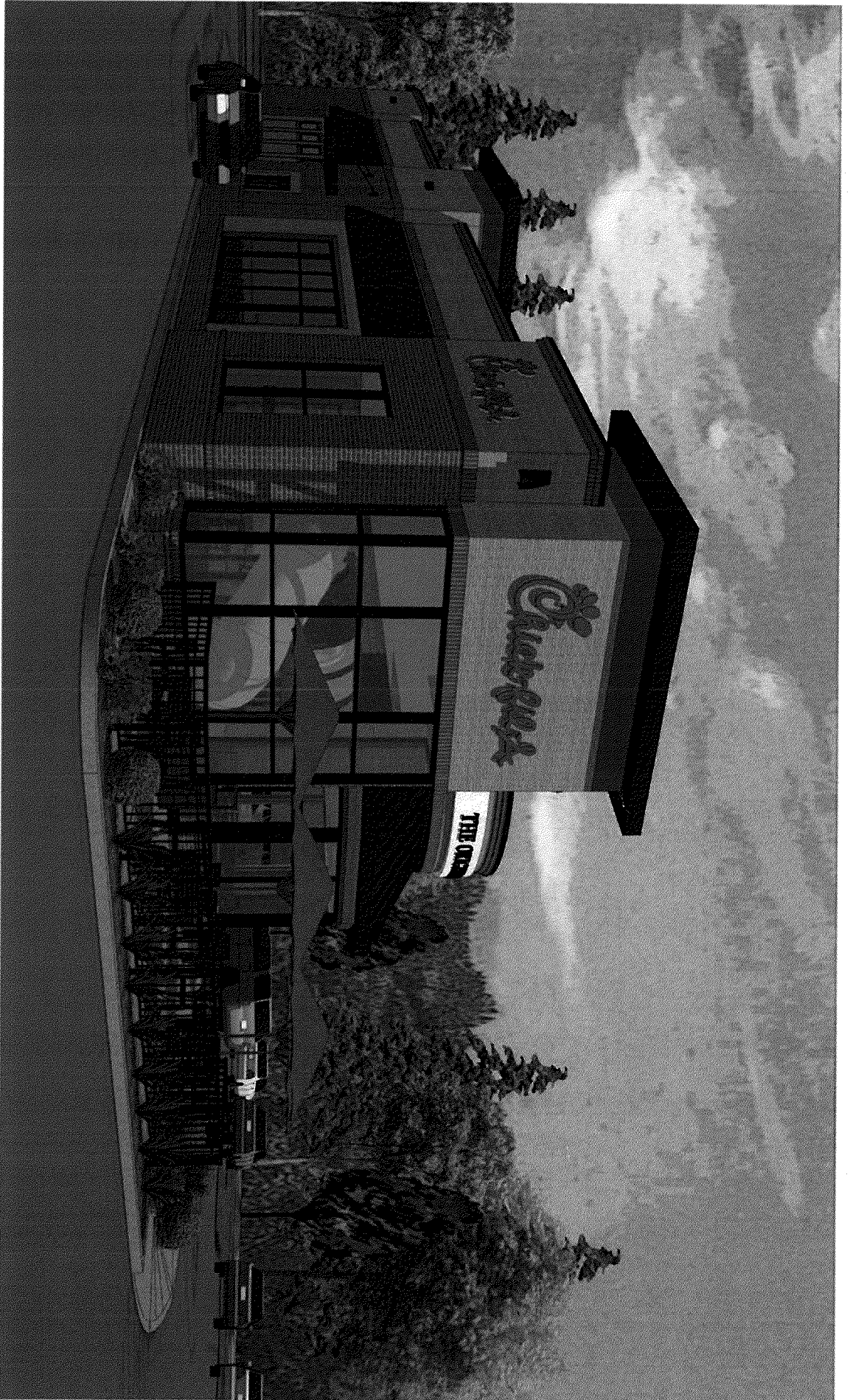


S08 V8 Building N-S

Jefferson Commons FSU, Louisville, KY - Store #03511



19DEURAW1093



S08 V8 Building N-S

Jefferson Commons FSU, Louisville, KY – Store #03511



19/01/2019

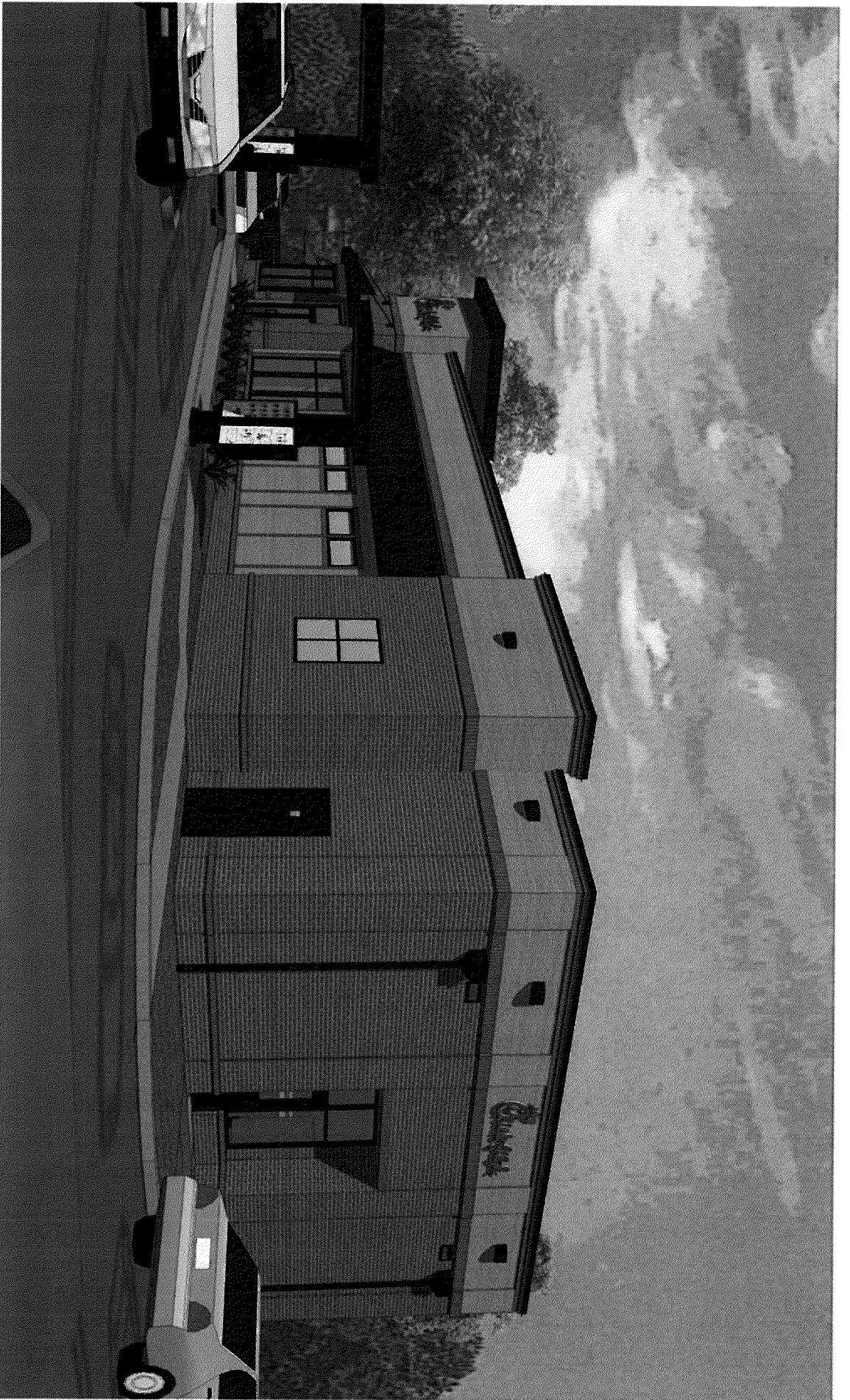


S08 V8 Building N-S

Jefferson Commons FSU, Louisville, KY - Store #03511



14/12/2017



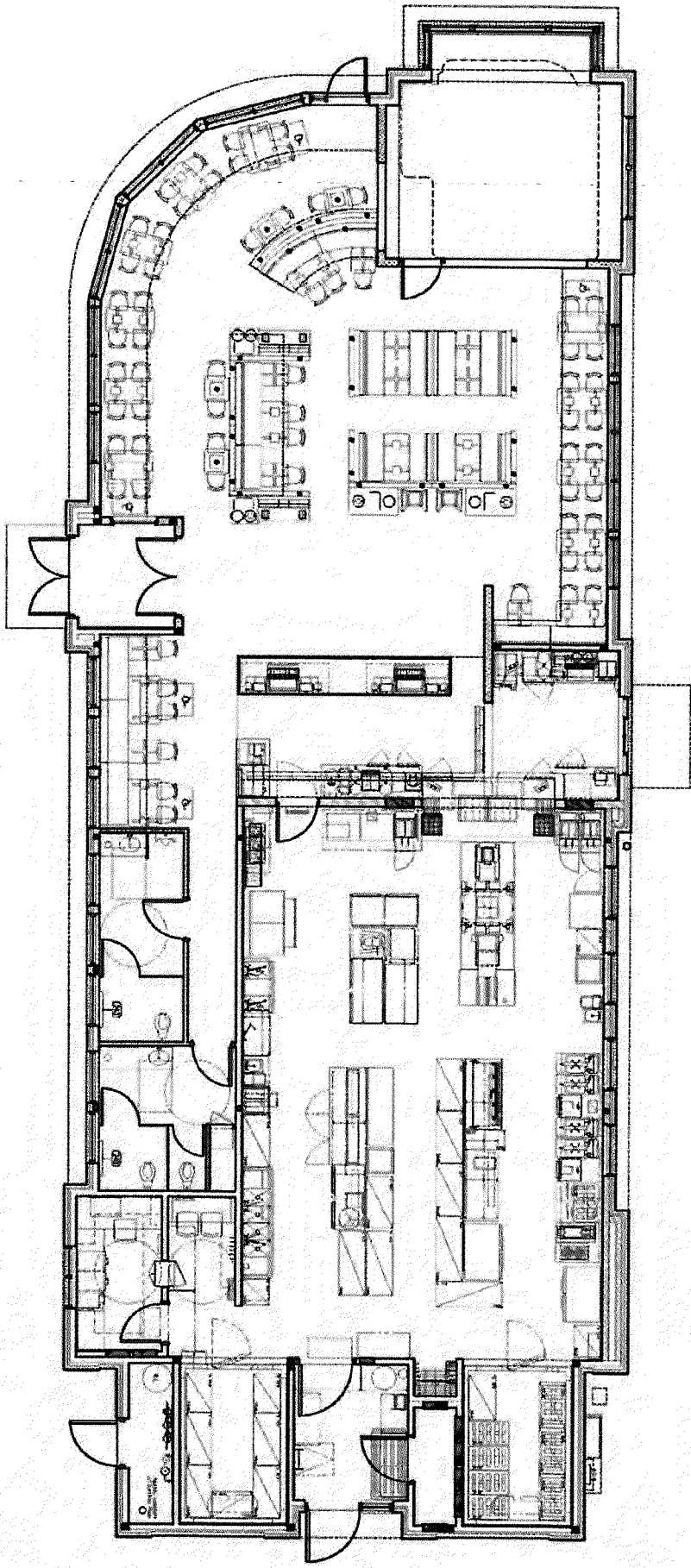
S08 V8 Building N-S

Jefferson Commons FSU, Louisville, KY - Store #03511

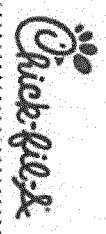


1972/2/2/2011

S08 V8 Building N-S | Floor plan
Heated Area: 4390 sf
Seat Count: 100

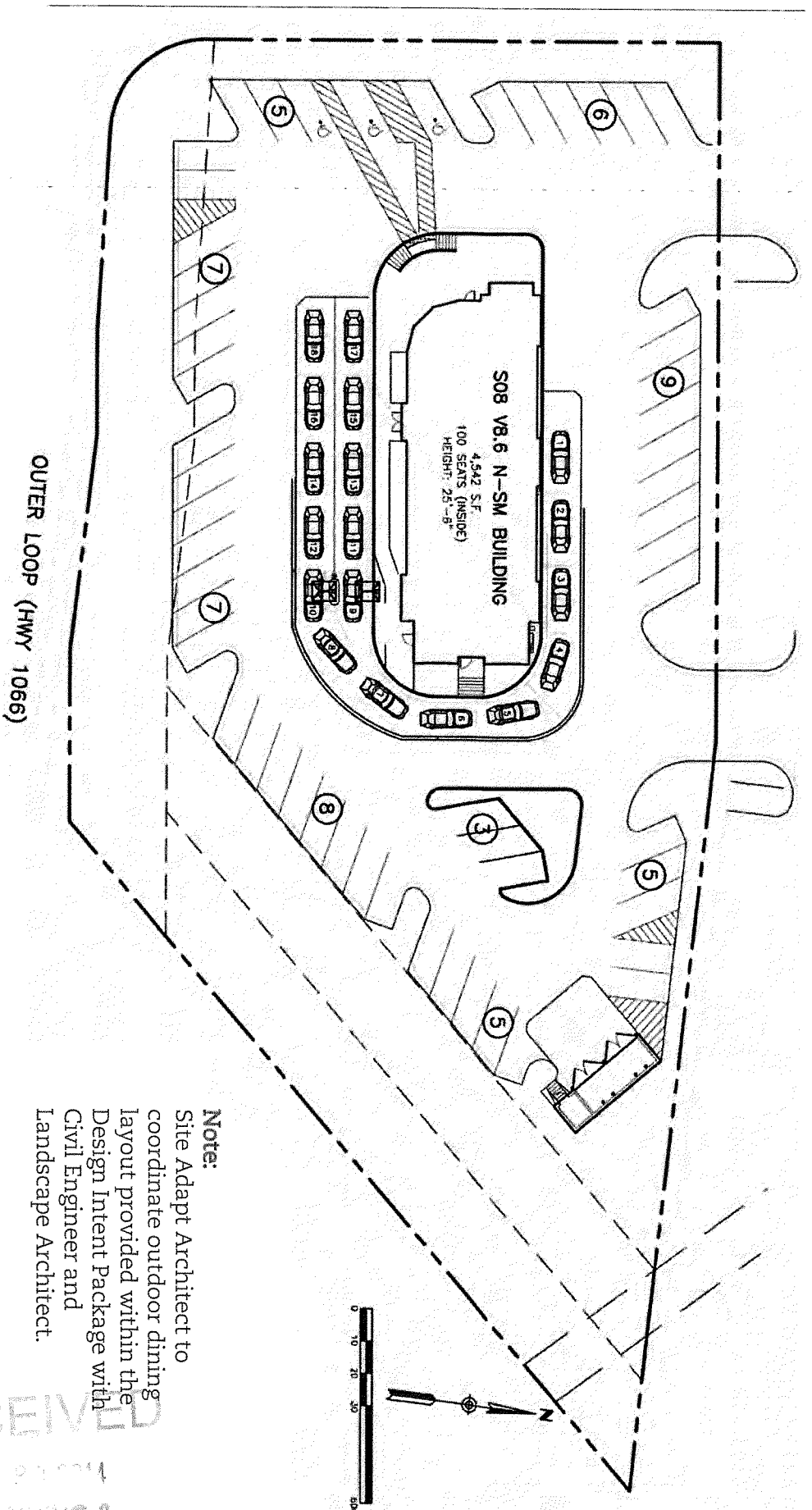


Jefferson Commons FSU, Louisville, KY – Store #03511

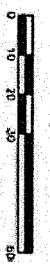


RECEIVED
OCT 21 2015
PLANNING &
DESIGN SERVICES

IANA 10/21/15



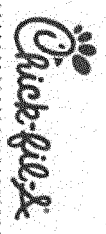
OUTER LOOP (HWY 1066)



Note:
 Site Adapt Architect to coordinate outdoor dining layout provided within the Design Intent Package with Civil Engineer and Landscape Architect.

Preliminary Site Plan

Jefferson Commons FSU, Louisville, KY – Store #03511

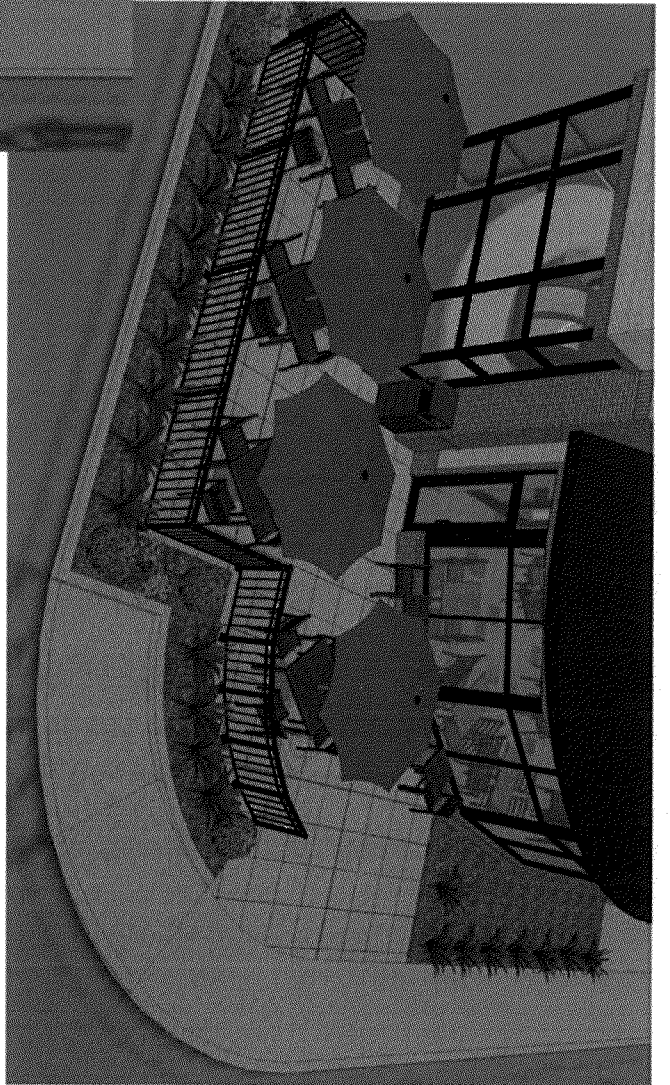
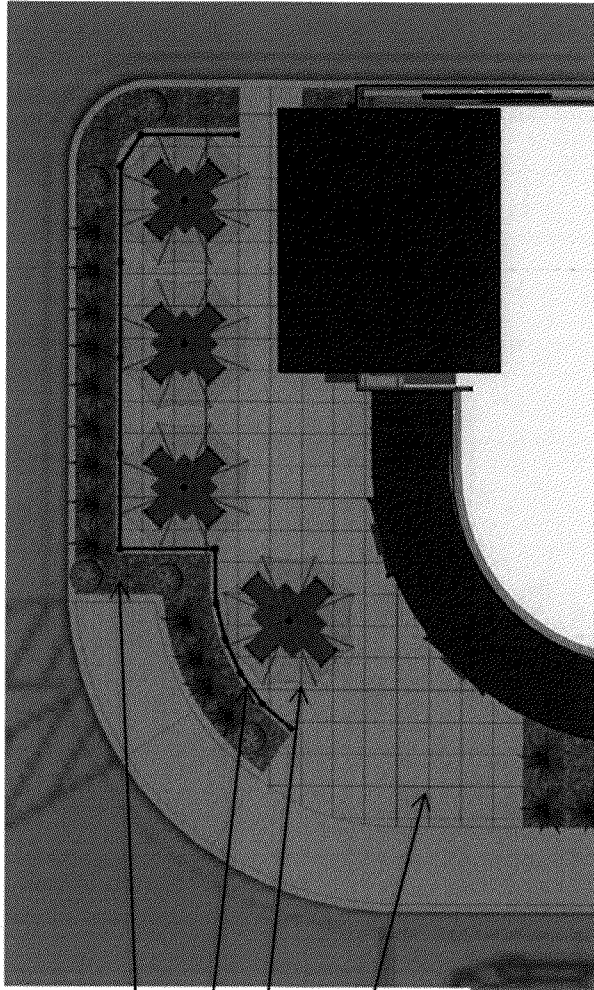


RECEIVED
 PREPARED BY
 DATE

1402/19/2016

Jefferson Commons FSU, Louisville, KY - Store #03511

Outdoor Dining Plan



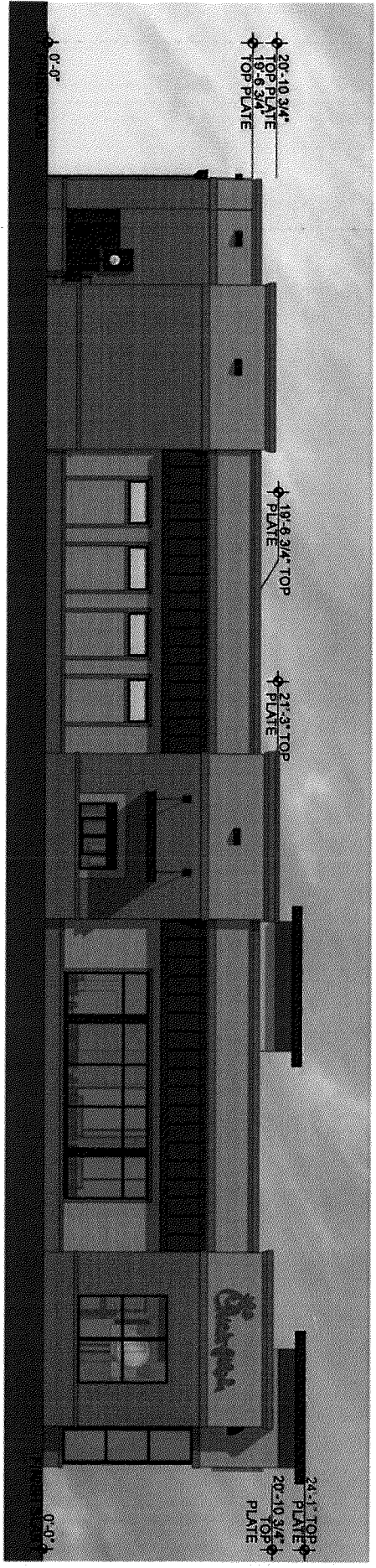
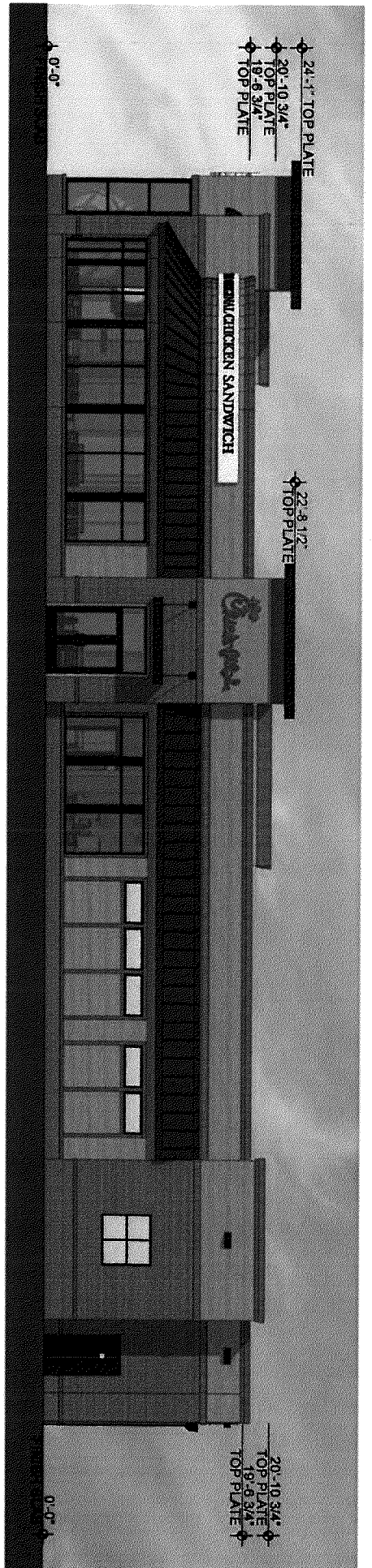
- 24" X 24" SCORED CONCRETE PAVING PATTERN
- OUTDOOR SEATING, TYP.
- METAL RAILING, TYP
- LOW LANDSCAPING



RECEIVED
OCT 21 2011
PLANNING &
DESIGN SERVICES

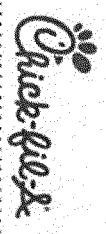
10/21/11

S08 V8 Building N-S | Exterior Elevations



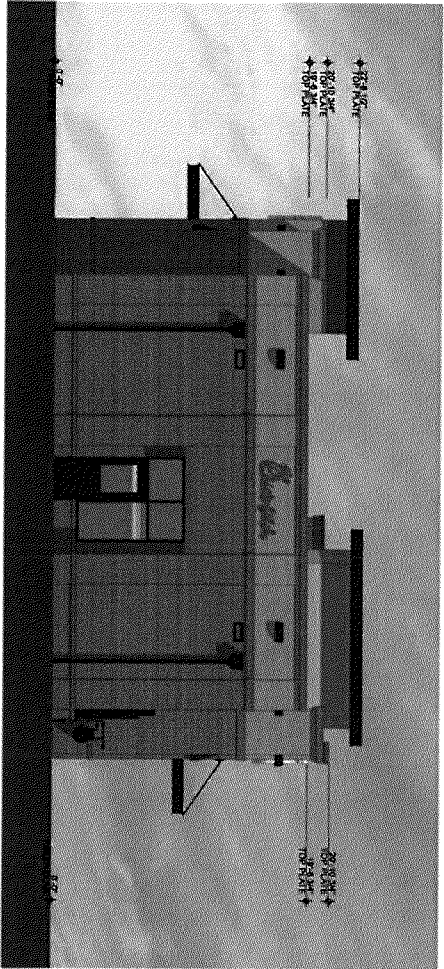
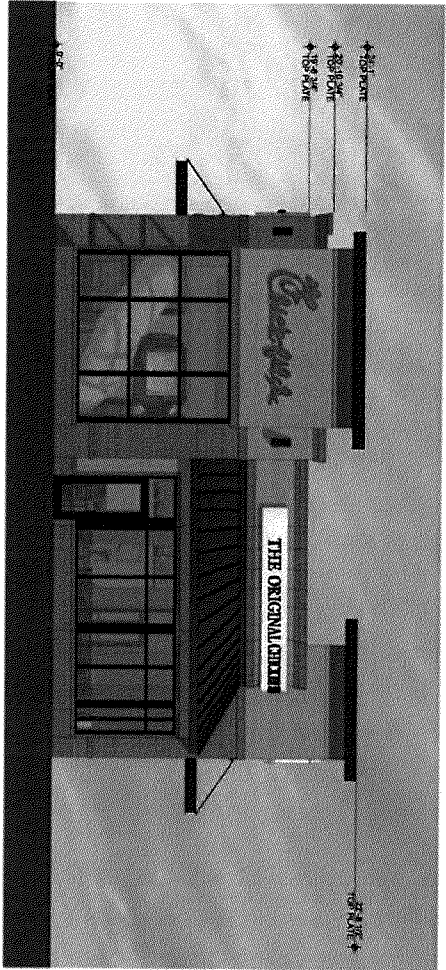
Jefferson Commons FSU, Louisville, KY – Store #03511

RECEIVED
 001 2024
 PLANNING &
 DESIGN SERVICES



1472EVPR12/10/23

S08 V8 Building N-S | Exterior Elevations



Jefferson Commons FSU, Louisville, KY - Store #03511



RECEIVED

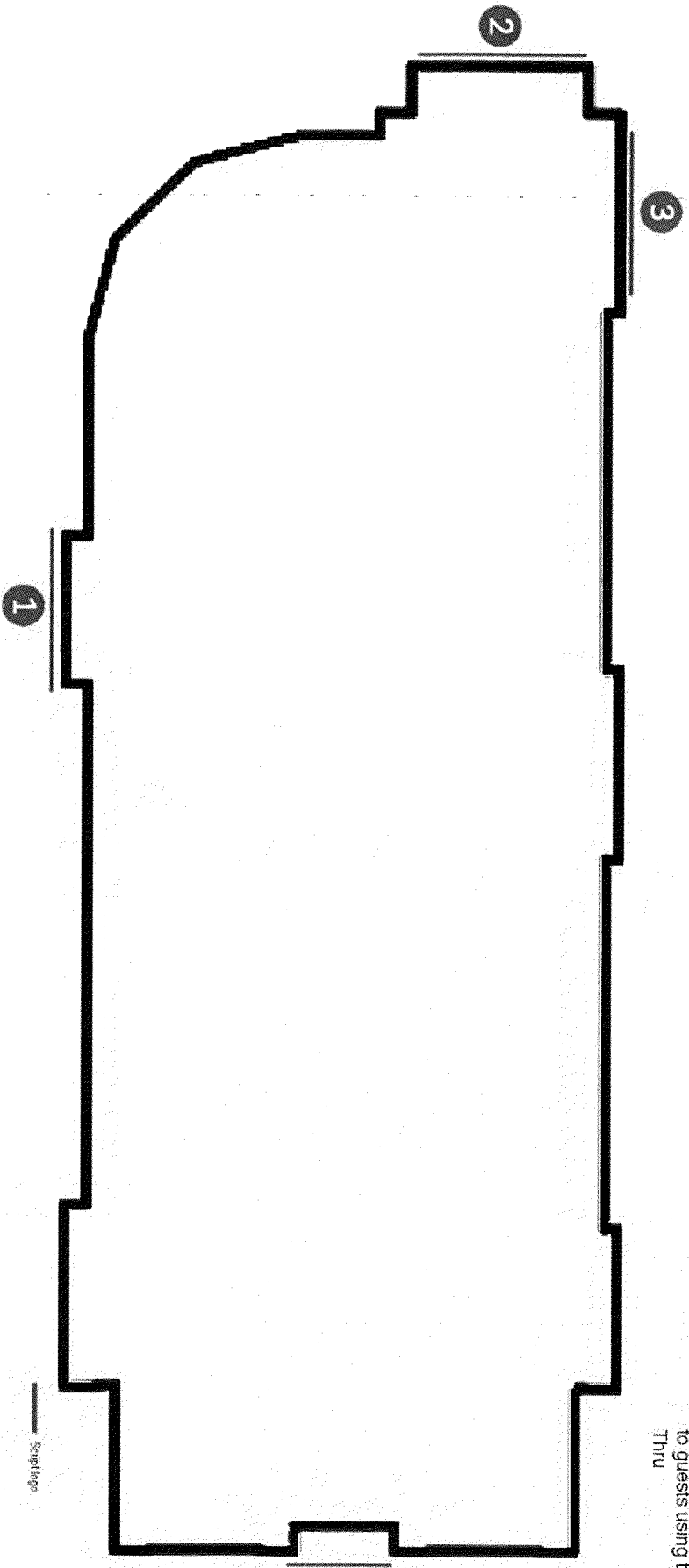
DEC 31 2011

PLANNING &
DESIGN SERVICES

19 DEC 2011 11:03

Exterior Messaging | Architectural Elements

Building N Signage Prioritization



RECEIVED
JAN 1 2014
TRAINING &
ELECTRON SERVICES

- 1 Script logo type which is positioned on the facade of the Main Entry
- 2 Script logo type on the front of the building. This position allows for maximum visibility from the main flow of traffic
- 3 Script logo type on the Drive-Thru side to allow for high visibility from both directions of the main flow
- 4 Script logo type on the back of the building, but having signage here helps reinforce the brand to guests using the Drive-Thru

Jefferson Commons FSU, Louisville, KY – Store #03511



LADEP... [Handwritten signature]

Executive Summary

General Modifications to the Building Template for Exterior and Interior Design

Exterior Modifications:

- No deviations from interior template design

Interior Modifications:

- No deviations from interior template design

Jefferson Commons FSU, Louisville, KY – Store #03511



RECEIVED
MAY 11 2011
PLANNING &
DESIGN SERVICES

1902/1914/1915/1916/1917